

KD-Validated Anti-FUBP1 Recombinant Rabbit Monoclonal Antibody



Catalog #: 61372

Aliases

FUBP1; Far Upstream Element Binding Protein 1; FBP; Far Upstream Element (FUSE) Binding Protein 1; Far Upstream Element-Binding Protein 1; FUSE Binding Protein 1; DNA Helicase V; HDH V; FUBP; Epididymis Secretory Sperm Binding Protein; FUSE-Binding Protein 1

Background

Gene Name: FUBP1

NCBI Gene Entry: [8880](#)

UniProt Entry: [Q96AE4](#)

Application Information

Molecular Weight: Predicted, 68 kDa; observed, 74 kDa

Clonality: Rabbit monoclonal antibody

Clone ID: 25GB2390

Species Reactivity: Human, mouse, rat

Applications Tested: Western blotting (WB), flow cytometry (FCM), immunocytochemistry (IC)

Immunogen

A synthesized peptide derived from human FUBP1

Isotype

Rabbit IgG

Storage Buffer

Supplied in PBS (pH 7.4) containing 50% glycerol, and 0.02% sodium azide.

Storage

Store at -20 °C for one year.

Recommended Dilutions

Western Blotting (WB): 1:1,000-1:5,000

Flow Cytometry (FCM): 1:2,000

Immunocytochemistry (IC): 1:100-1:1,000

Note: This product is for research use only.

SUPPORT

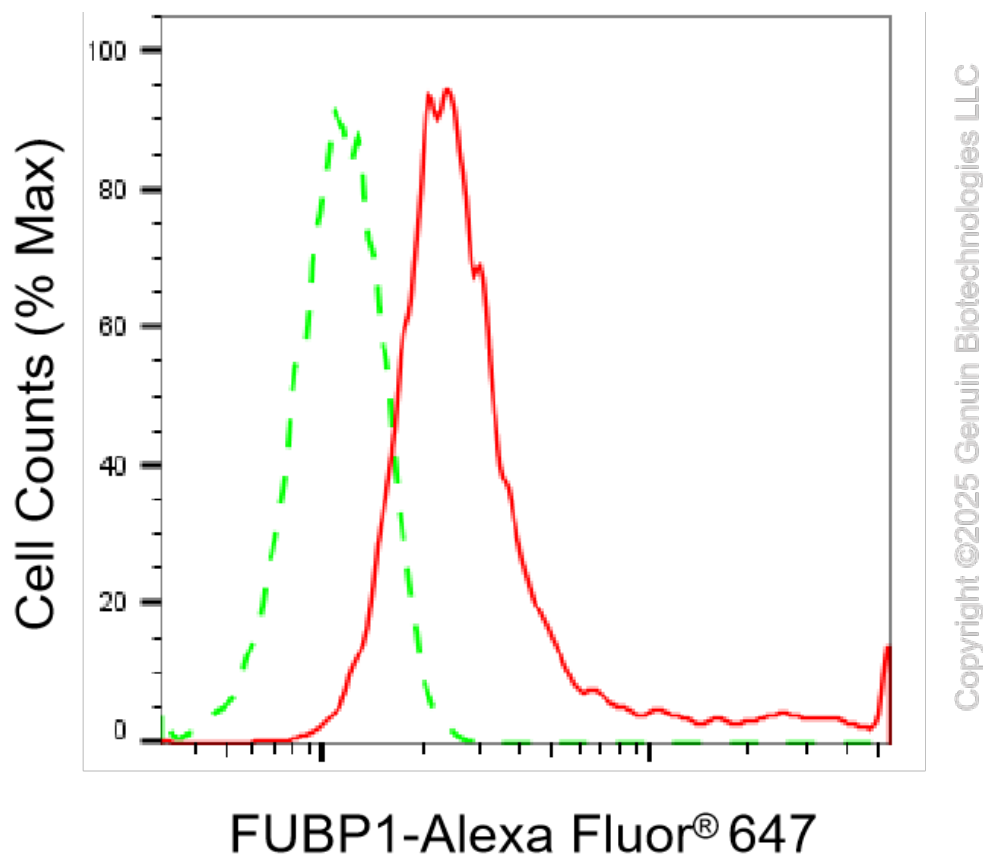
SUPPORT@GENUINBIOTECH.COM
TEL: +1-540-855-7041

ORDERS

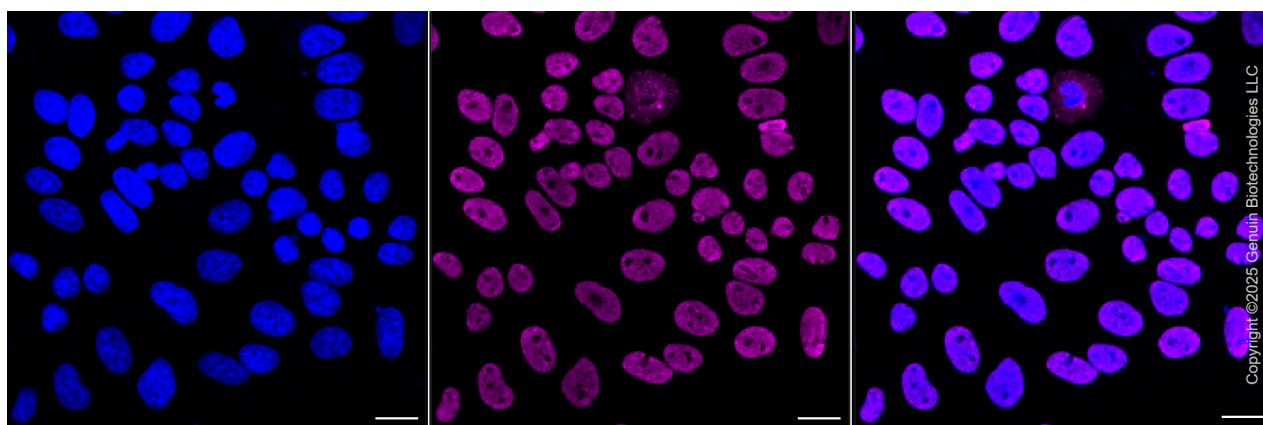
SALES@GENUINBIOTECH.COM
FAX: +1-540-855-7041

WWW.GENUINBIOTECH.COM

Validation Data



Flow cytometric analysis of FUBP1 expression in HepG2 cells using FUBP1 antibody (Cat#61372, 1:2,000). Green, isotype control; red, FUBP1.



Immunocytochemical staining of HepG2 cells with anti-FUBP1 antibody (Cat#61372, 1:1,000). Nuclei were stained blue with DAPI; FUBP1 was stained magenta with Alexa Fluor® 647. Images were taken using Leica stellaris 5. Protein abundance based on laser Intensity and smart gain: High. Scale bar, 20 μ m.

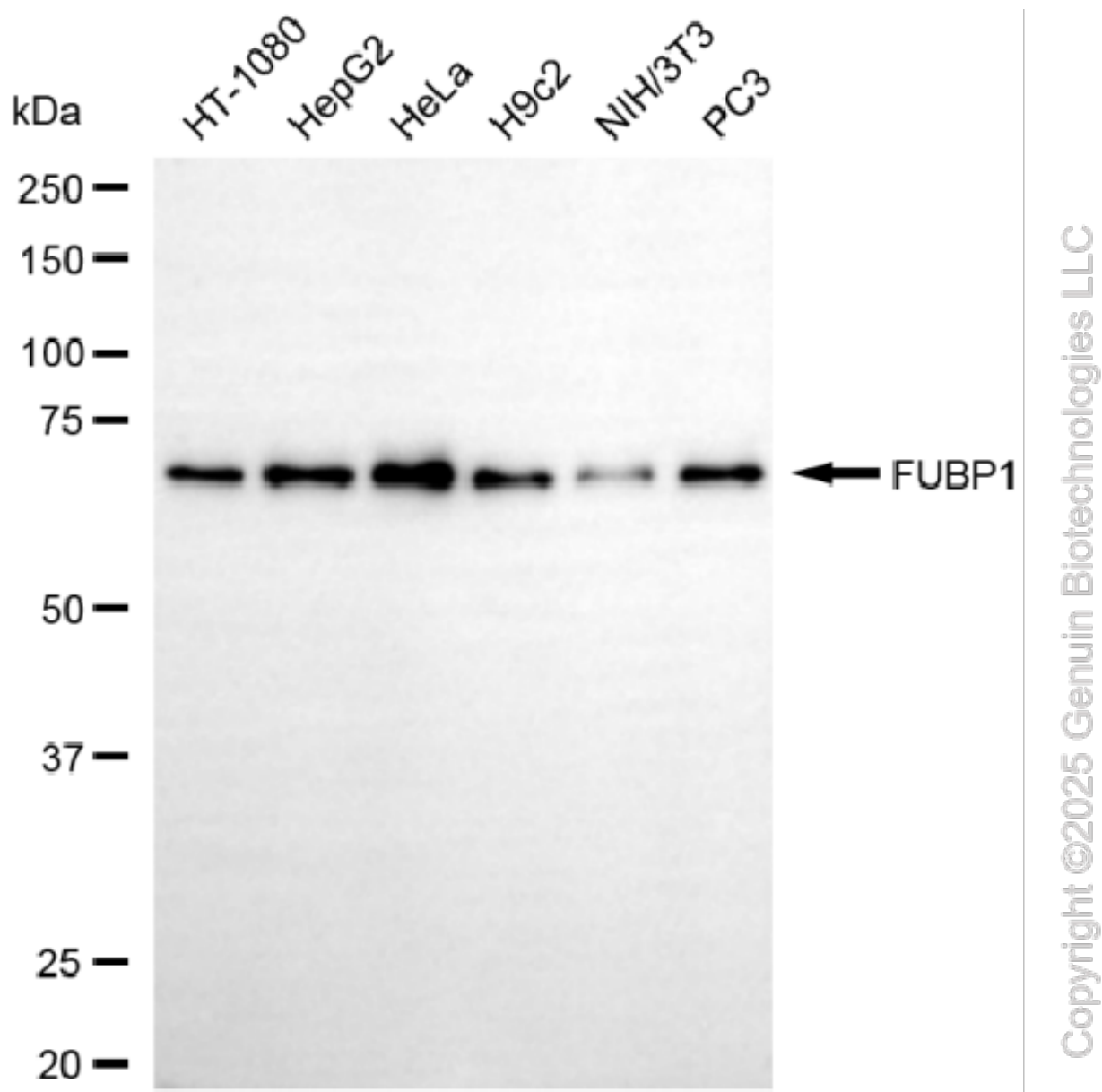
SUPPORT

SUPPORT@GENUINBIOTECH.COM
TEL: +1-540-855-7041

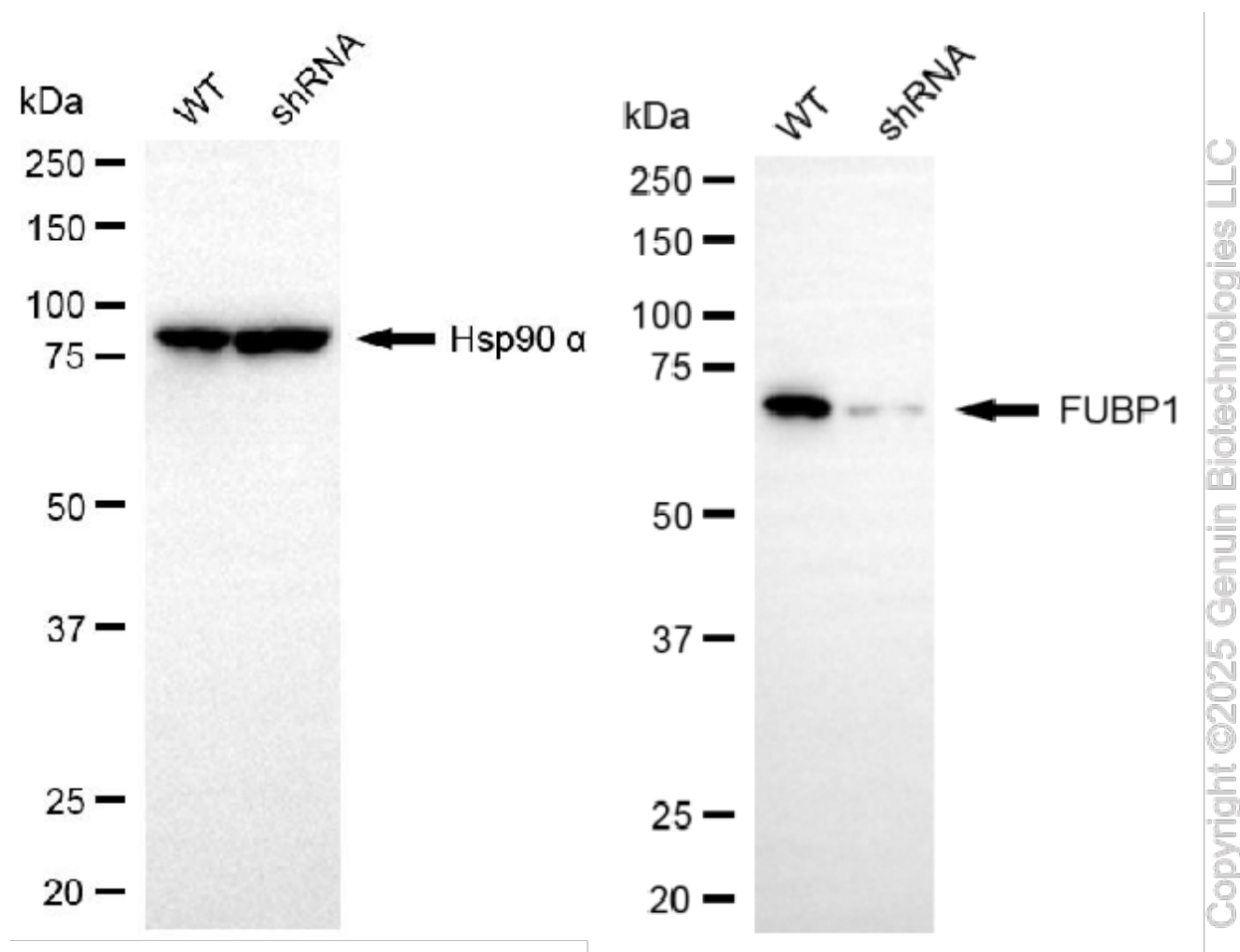
ORDERS

SALES@GENUINBIOTECH.COM
FAX: +1-540-855-7041

WWW.GENUINBIOTECH.COM



Western blotting analysis using anti-FUBP1 antibody (Cat#61372). Total cell lysates (30 µg) from various cell lines were loaded and separated by SDS-PAGE. The blot was incubated with anti-FUBP1 antibody (Cat#61372, 1:5,000) and HRP-conjugated goat anti-rabbit secondary antibody (Cat#201, 1:20,000) respectively. Image was developed using NaQ™ ECL Substrate Kit (Cat#716).



Western blotting analysis using anti-FUBP1 antibody (Cat#61372). FUBP1 expression in wild-type (WT) and FUBP1 shRNA knockdown (KD) HeLa cells with 20 µg of total cell lysates. Hsp90 α serves as a loading control. The blot was incubated with anti-FUBP1 antibody (Cat#61372, 1:5,000) and HRP-conjugated goat anti-rabbit secondary antibody (Cat#201, 1:20,000) respectively. Image was developed using NaQ™ ECL Substrate Kit (Cat#716).