

KD-Validated Anti-CD13 Recombinant Rabbit Monoclonal Antibody



Catalog #: 61377

Aliases

ANPEP; Alanyl Aminopeptidase, Membrane; AP-N; HAPN; Microsomal Aminopeptidase; Aminopeptidase N; Aminopeptidase M; LAP1; P150; CD13; PEPN; Myeloid Plasma Membrane Glycoprotein CD13; Alanyl (Membrane) Aminopeptidase; Membrane Alanyl Aminopeptidase; EC 3.4.11.2; Gp150; GP150; AP-M; APN; Alanyl; Aminopeptidase; CD13 Antigen; EC 3.4.11

Background

Gene Name: ANPEP

NCBI Gene Entry: [290](#)

UniProt Entry: [P15144](#)

Application Information

Molecular Weight: Predicted, 110 kDa, observed, 150 kDa

Clonality: Rabbit monoclonal antibody

Clone ID: 23GB3360

Species Reactivity: Human, mouse

Applications Tested: Western blotting (WB), flow cytometry (FCM), immunocytochemistry (IC)

Immunogen

A synthesized peptide derived from human CD13

Isotype

Rabbit IgG

Storage Buffer

Supplied in PBS (pH 7.4) containing 50% glycerol, and 0.02% sodium azide.

Storage

Store at -20 °C for one year.

Recommended Dilutions

Western Blotting (WB): 1:1,000-1:5,000

Flow Cytometry (FCM): 1:2,000

Immunocytochemistry (IC): 1:100-1:1,000

SUPPORT

SUPPORT@GENUINBIOTECH.COM
TEL: +1-540-855-7041

ORDERS

SALES@GENUINBIOTECH.COM
FAX: +1-540-855-7041

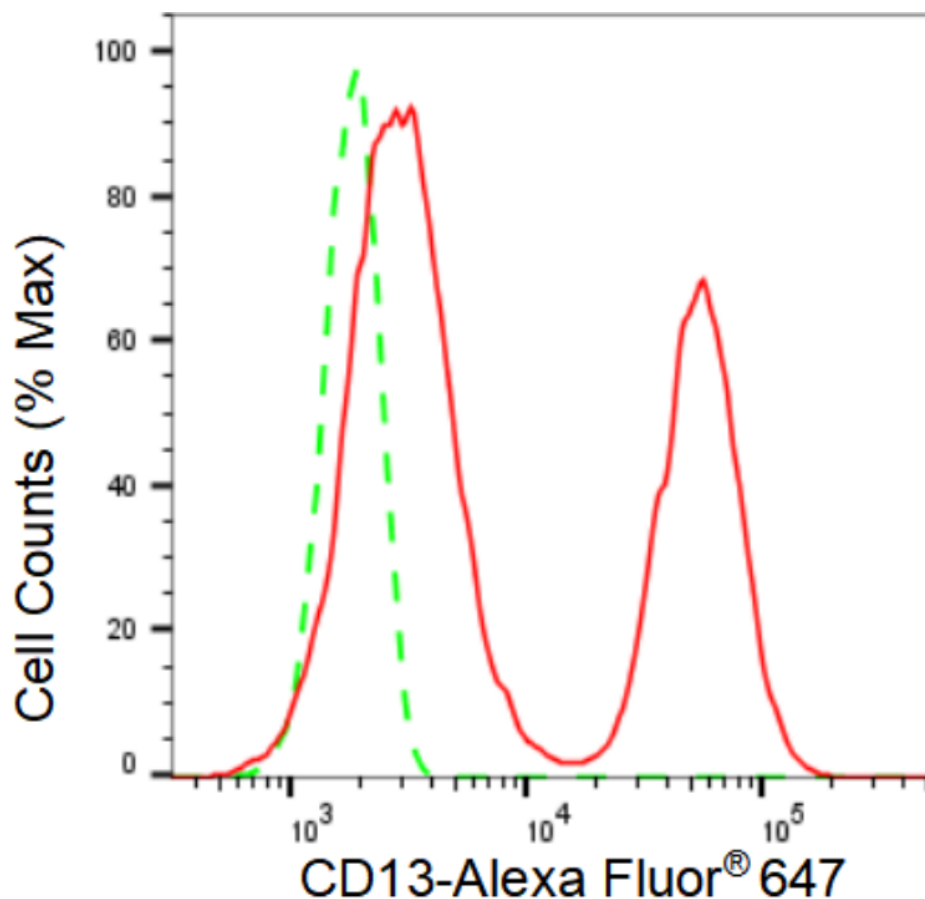
WWW.GENUINBIOTECH.COM

KD-Validated Anti-CD13 Recombinant Rabbit Monoclonal Antibody

PAGE 2

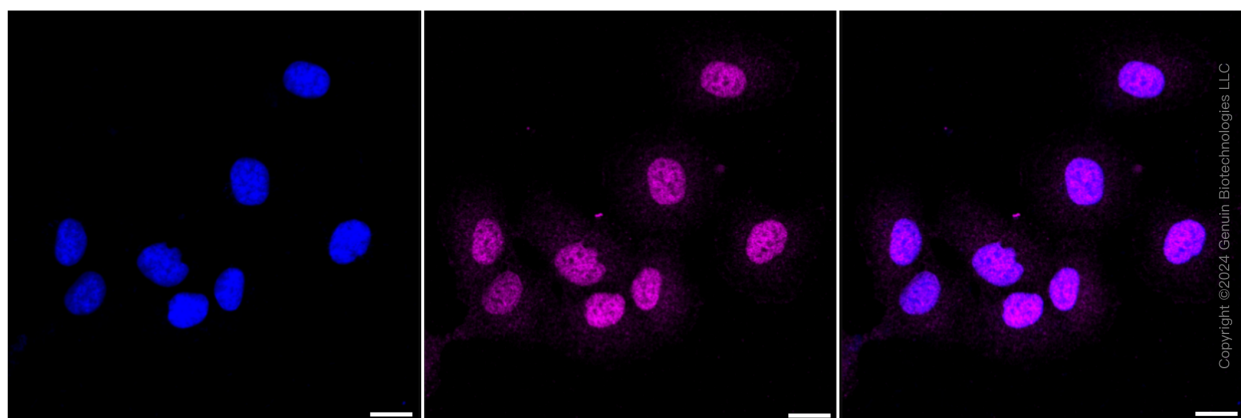
Note: This product is for research use only.

Validation Data



Copyright ©2024 Genuin Biotechnologies LLC

Flow cytometric analysis of CD13 expression in HT-1080 cells using CD13 antibody (Cat#61377, 1:2,000). Green, isotype control; red, CD13.



Immunocytochemical staining of HT-1080 cells with CD13 antibody (Cat#61377, 1:1,000). Nuclei were stained blue with DAPI; CD13 was stained magenta with Alexa Fluor® 647. Images were taken using Leica stellaris 5. Protein abundance based on laser Intensity and smart gain: Medium.

SUPPORT

SUPPORT@GENUINBIOTECH.COM
TEL: +1-540-855-7041

ORDERS

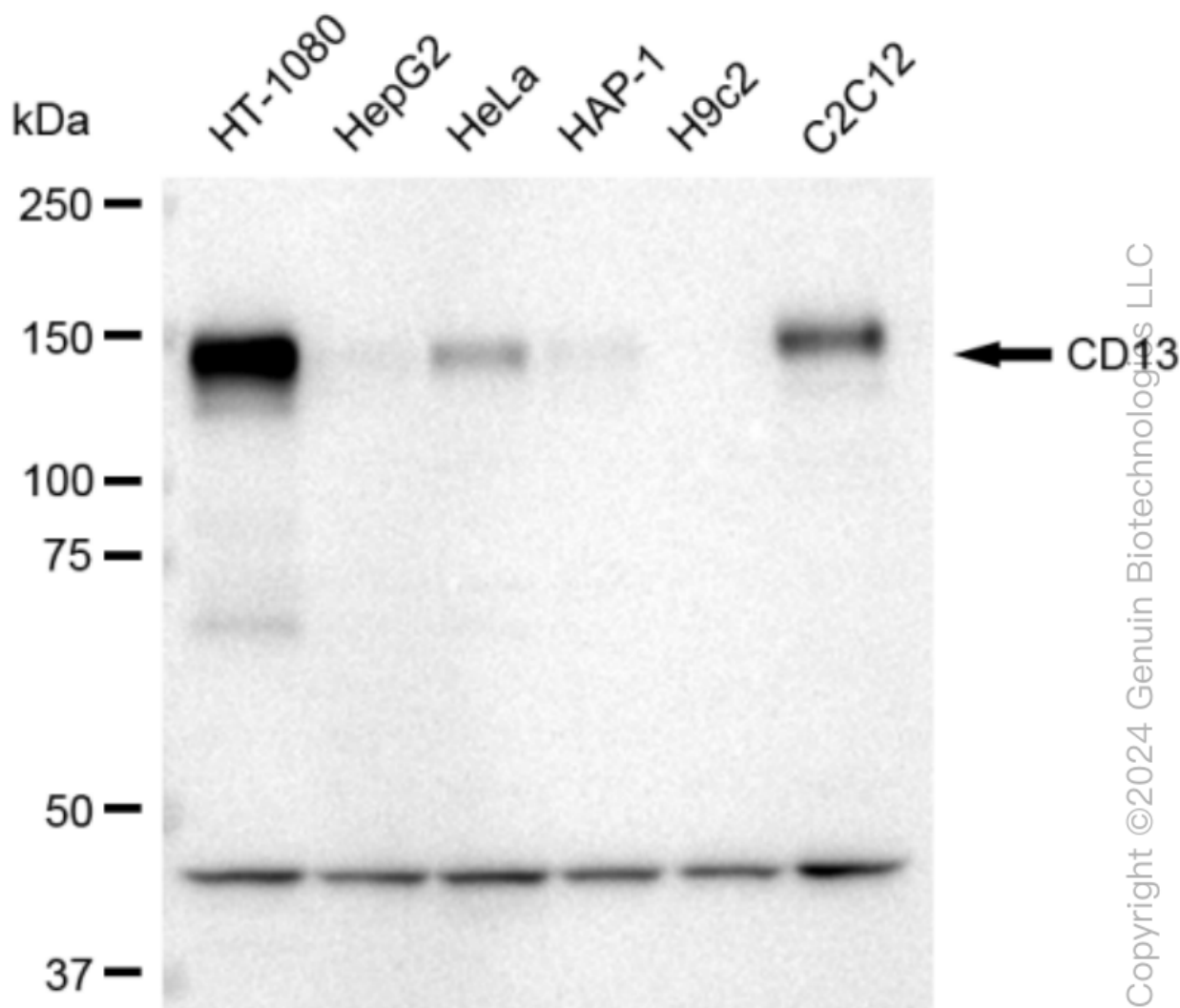
SALES@GENUINBIOTECH.COM
FAX: +1-540-855-7041

WWW.GENUINBIOTECH.COM

KD-Validated Anti-CD13 Recombinant Rabbit Monoclonal Antibody

PAGE 3

Scale bar: 20 μ m.



Western blotting analysis using anti-CD13 antibody (Cat#61377). Total cell lysates (30 μ g) from various cell lines were loaded and separated by SDS-PAGE. The blot was incubated with anti-CD13 antibody (Cat#61377, 1:5,000) and HRP-conjugated goat anti-rabbit secondary antibody (Cat#201, 1:20,000) respectively. Image was developed using FeQ™ ECL Substrate Kit (Cat#226).

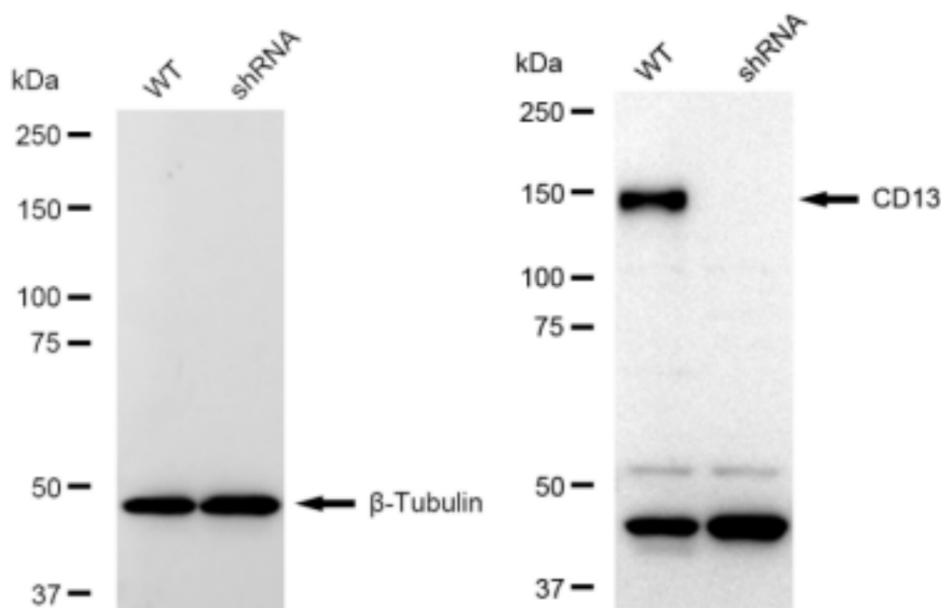
SUPPORT

SUPPORT@GENUINBIOTECH.COM
TEL: +1-540-855-7041

ORDERS

SALES@GENUINBIOTECH.COM
FAX: +1-540-855-7041

WWW.GENUINBIOTECH.COM



Copyright ©2024 Genuin Biotechnologies LLC

Western blotting analysis using anti-CD13 antibody (Cat#61377). CD13 expression in wild type (WT) and CD13 shRNA knockdown (KD) HeLa cells with 30 μ g of total cell lysates. β -Tubulin serves as a loading control. The blot was incubated with anti-CD13 antibody (Cat#61377, 1:5,000) and HRP-conjugated goat anti-rabbit secondary antibody (Cat#201, 1:20,000) respectively. Image was developed using FeQ™ ECL Substrate Kit (Cat#226).