

KD-Validated Anti-Cyclin A1/A2 Recombinant Rabbit Monoclonal Antibody



Catalog #: 61382

Aliases

CCNA2; Cyclin A2; CCN1; CCNA; Cyclin-A2; Cyclin-A; Cyclin A; CCNA1; Cyclin A1; CT146; Cyclin-A1; Testicular Tissue Protein Li 34

Background

Gene Name: CCNA1/2

NCBI Gene Entry: [890/8900](#)

UniProt Entry: [P20248/ P78396](#)

Application Information

Molecular Weight: Predicted, 52 kDa, observed, 52 kDa

Clonality: Rabbit monoclonal antibody

Clone ID: 23GB3525

Species Reactivity: Human, mouse, rat

Applications Tested: Western blotting (WB), flow cytometry (FCM), immunocytochemistry (IC)

Immunogen

A synthesized peptide derived from human Cyclin A1/A2

Isotype

Rabbit IgG

Storage Buffer

Supplied in PBS (pH 7.4) containing 50% glycerol, and 0.02% sodium azide.

Storage

Store at -20 °C for one year.

Recommended Dilutions

Western Blotting (WB): 1:1,000-1:5,000

Flow Cytometry (FCM): 1:2,000

Immunocytochemistry (IC): 1:100-1:1,000

Note: This product is for research use only.

Validation Data

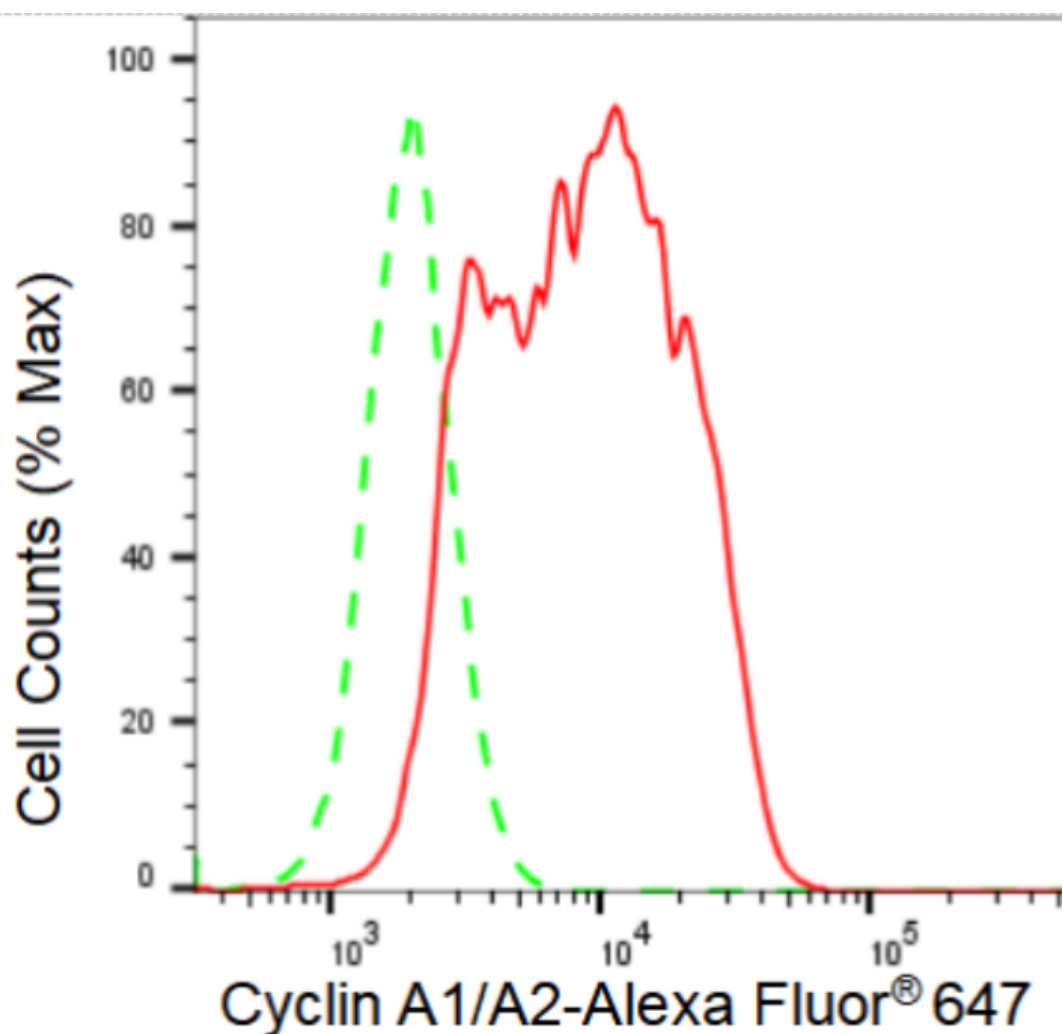
SUPPORT

SUPPORT@GENUINBIOTECH.COM
TEL: +1-540-855-7041

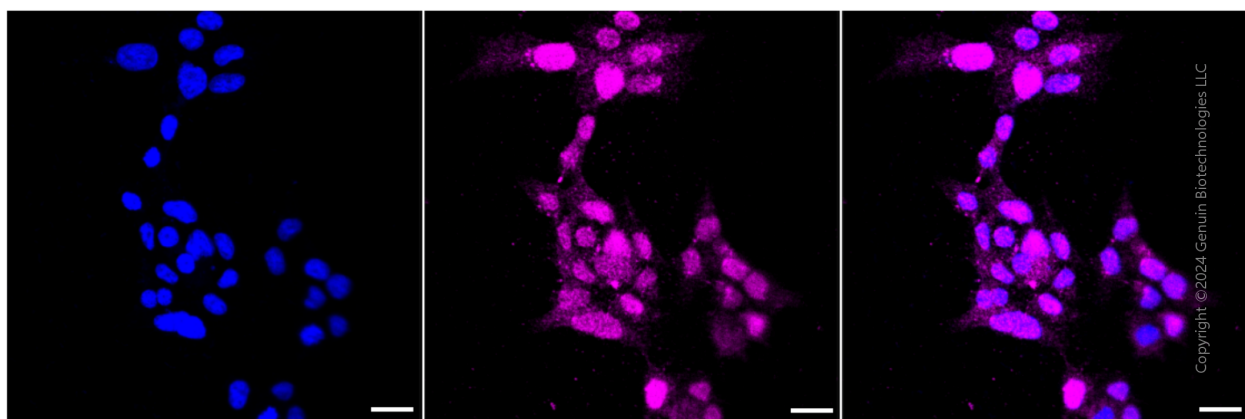
ORDERS

SALES@GENUINBIOTECH.COM
FAX: +1-540-855-7041

WWW.GENUINBIOTECH.COM



Flow cytometric analysis of Cyclin A1/A2 expression in HAP-1 cells using Cyclin A1/A2 antibody (Cat#61382, 1:2,000). Green, isotype control; red, Cyclin A1/A2.



Immunocytochemical staining of HAP-1 cells with Cyclin A1/A2 antibody (Cat#61382, 1:1,000). Nuclei were stained blue with DAPI; Cyclin A1/A2 was stained magenta with Alexa Fluor® 647. Images were taken using Leica stellaris 5. Protein abundance based on laser Intensity and smart

SUPPORT

SUPPORT@GENUINBIOTECH.COM
TEL: +1-540-855-7041

ORDERS

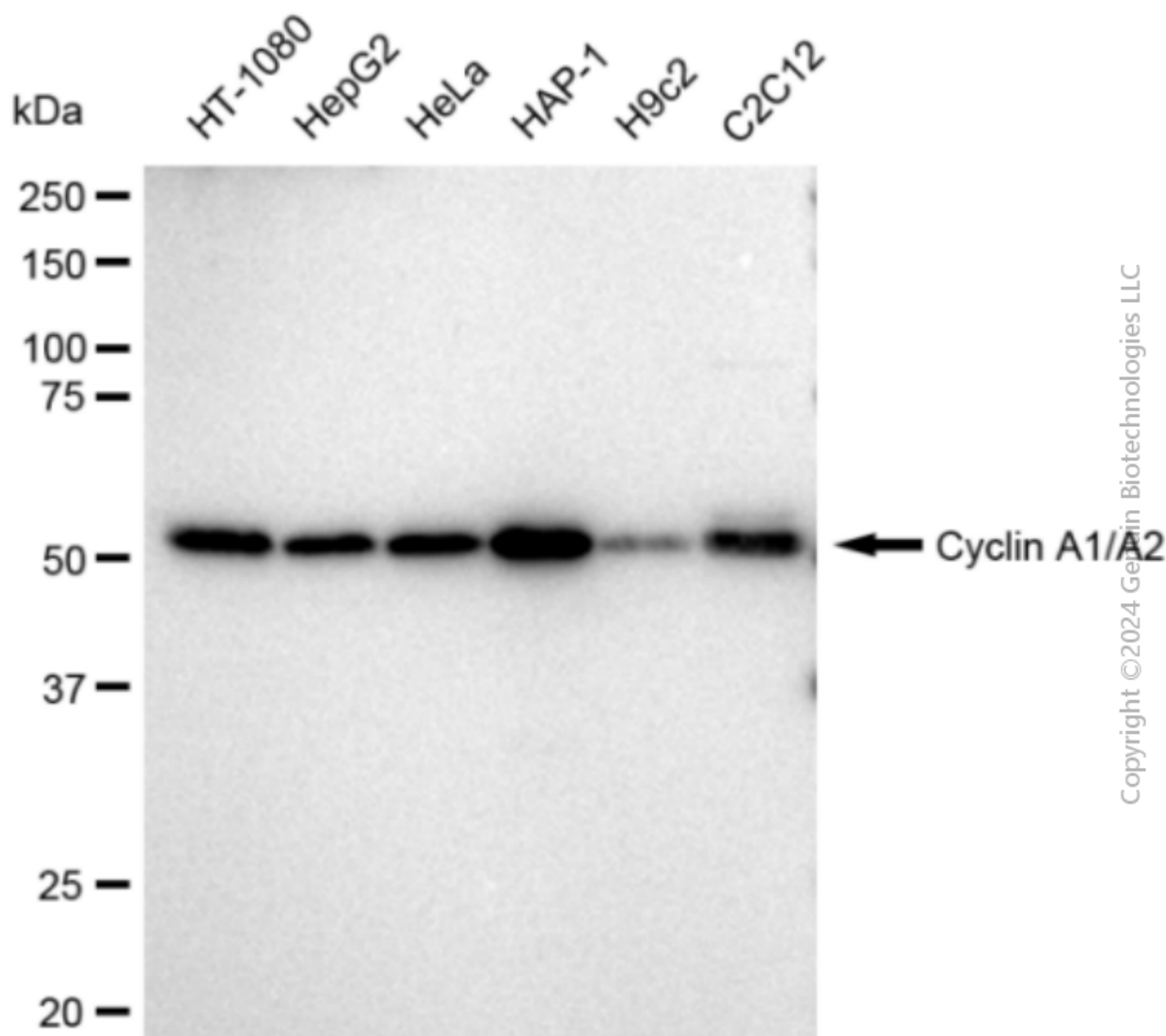
SALES@GENUINBIOTECH.COM
FAX: +1-540-855-7041

WWW.GENUINBIOTECH.COM

KD-Validated Anti-Cyclin A1/A2 Recombinant Rabbit Monoclonal Antibody

PAGE 3

gain: Medium. Scale bar: 20 μ m.



Western blotting analysis using anti-Cyclin A1/A2 antibody (Cat#61382). Total cell lysates (30 μ g) from various cell lines were loaded and separated by SDS-PAGE. The blot was incubated with anti-Cyclin A1/A2 antibody (Cat#61382, 1:5,000) and HRP-conjugated goat anti-rabbit secondary antibody (Cat#201, 1:20,000) respectively. Image was developed using FeQ™ ECL Substrate Kit (Cat#226).

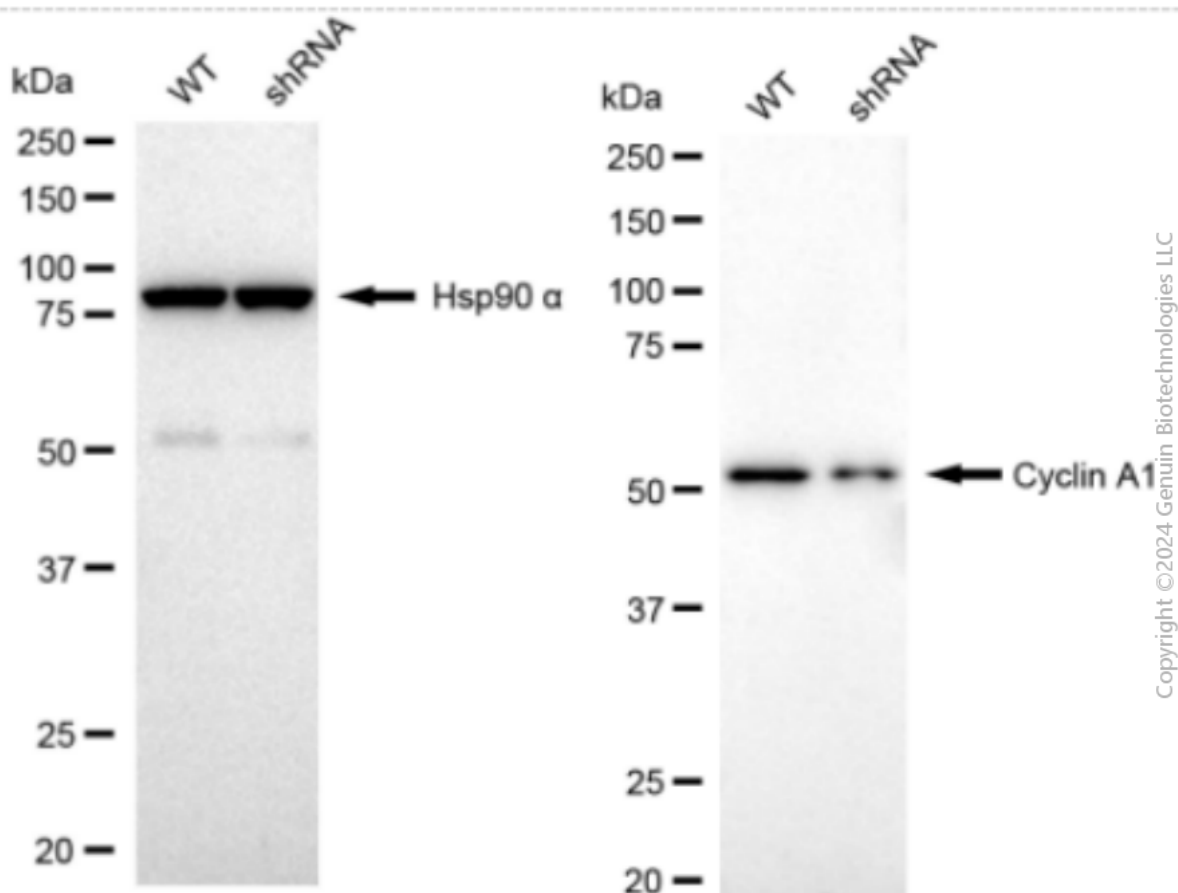
SUPPORT

SUPPORT@GENUINBIOTECH.COM
TEL: +1-540-855-7041

ORDERS

SALES@GENUINBIOTECH.COM
FAX: +1-540-855-7041

WWW.GENUINBIOTECH.COM



Western blotting analysis using anti-Cyclin A1 antibody (Cat#61382). Cyclin A1 expression in wild type (WT) and Cyclin A1 shRNA knockdown (KD) HeLa cells with 30 μ g of total cell lysates. Hsp90 α serves as a loading control. The blot was incubated with anti-Cyclin A1 antibody (Cat#61382, 1:5,000) and HRP-conjugated goat anti-rabbit secondary antibody (Cat#201, 1:20,000) respectively. Image was developed using FeQ™ ECL Substrate Kit (Cat#226).