

# KD-Validated Anti-CDC25C Recombinant Rabbit Monoclonal Antibody



**Catalog #: 61384**

## Aliases

CDC25C; Cell Division Cycle 25C; M-Phase Inducer Phosphatase 3; PPP1R60; Protein Phosphatase 1, Regulatory Subunit 60; EC 3.1.3.48; CDC25; Dual Specificity Phosphatase CDC25C; Dual Specificity Phosphatase Cdc25C; Phosphotyrosine Phosphatase; CDC25 Homolog C (S. Pombe); Mitosis Inducer CDC25; CDC25 Homolog C

## Background

Gene Name: CDC25C

NCBI Gene Entry: [995](#)

UniProt Entry: [P30307](#)

## Application Information

Molecular Weight: Predicted, 53 kDa, observed, 60 kDa

Clonality: Rabbit monoclonal antibody

Clone ID: 23GB3430

Species Reactivity: Human

Applications Tested: Western blotting (WB), flow cytometry (FCM), immunocytochemistry (IC)

## Immunogen

A synthesized peptide derived from human Cdc25C

## Isotype

Rabbit IgG

## Storage Buffer

Supplied in PBS (pH 7.4) containing 50% glycerol, and 0.02% sodium azide.

## Storage

Store at -20 °C for one year.

## Recommended Dilutions

Western Blotting (WB): 1:1,000-1:5,000

Flow Cytometry (FCM): 1:2,000

Immunocytochemistry (IC): 1:100-1:1,000

---

### SUPPORT

SUPPORT@GENUINBIOTECH.COM  
TEL: +1-540-855-7041

### ORDERS

SALES@GENUINBIOTECH.COM  
FAX: +1-540-855-7041

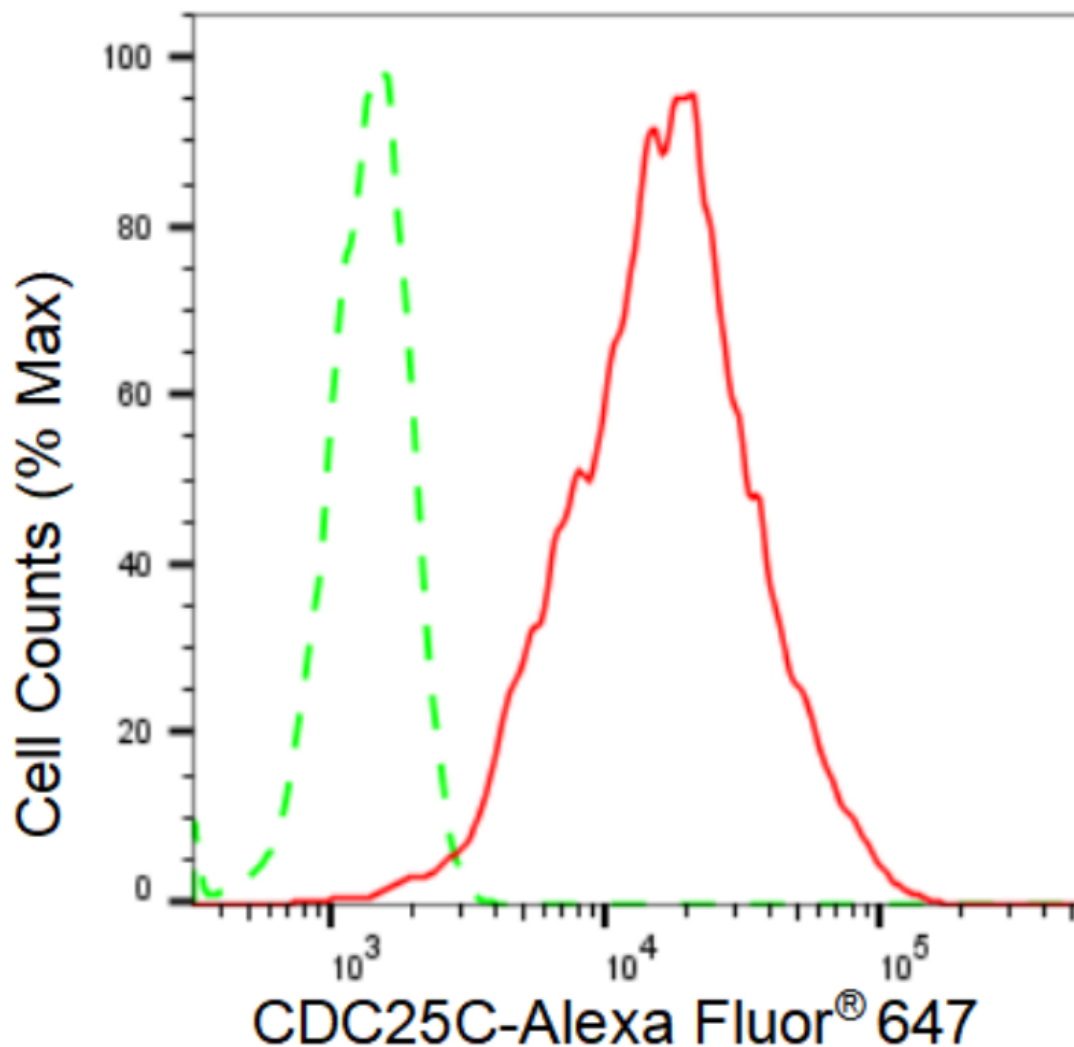
[WWW.GENUINBIOTECH.COM](http://WWW.GENUINBIOTECH.COM)

# KD-Validated Anti-CDC25C Recombinant Rabbit Monoclonal Antibody

PAGE 2

**Note:** This product is for research use only.

## Validation Data



Copyright ©2024 Genuin Biotechnologies LLC

Flow cytometric analysis of CDC25C expression in HeLa cells using CDC25C antibody (Cat#61384, 1:2,000). Green, isotype control; red, CDC25C.

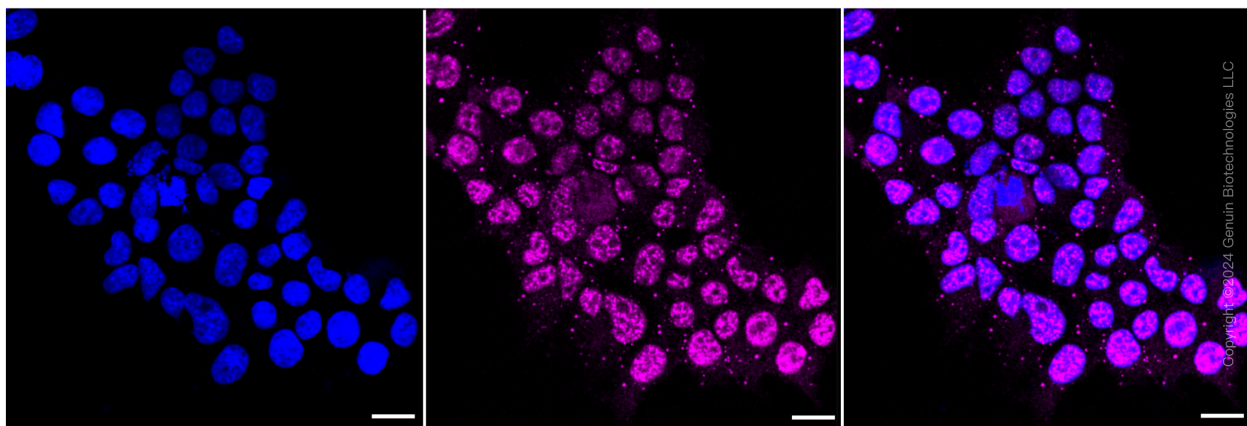
### SUPPORT

SUPPORT@GENUINBIOTECH.COM  
TEL: +1-540-855-7041

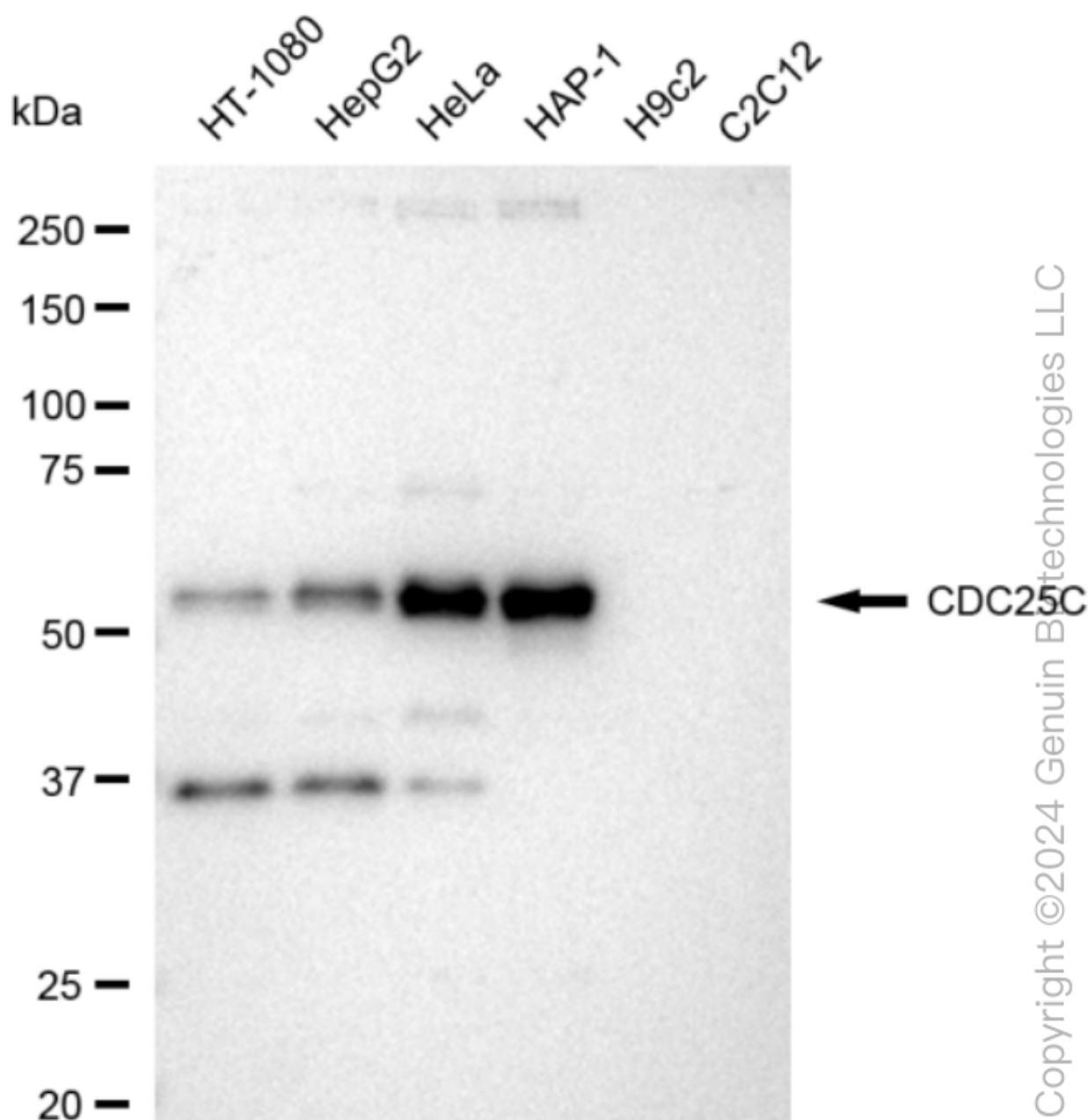
### ORDERS

SALES@GENUINBIOTECH.COM  
FAX: +1-540-855-7041

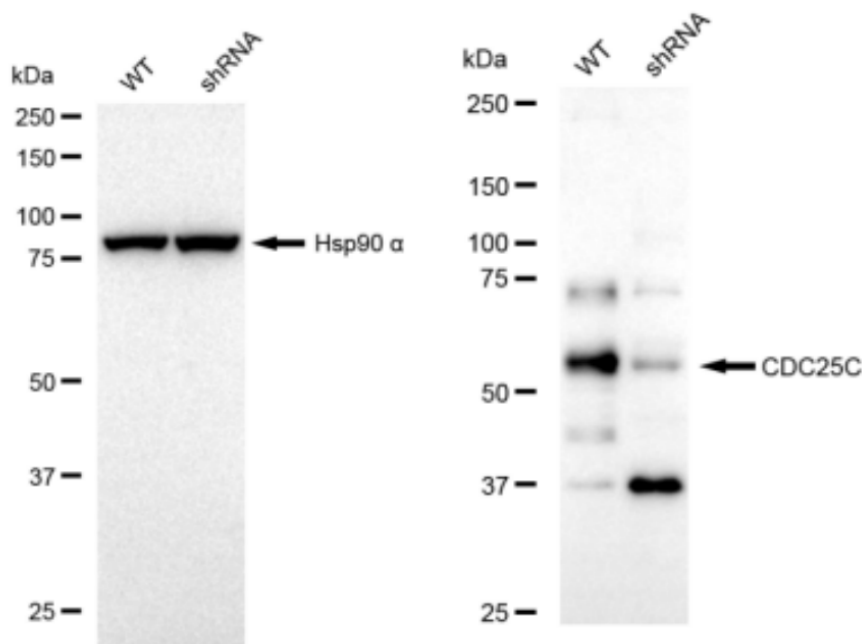
[WWW.GENUINBIOTECH.COM](http://WWW.GENUINBIOTECH.COM)



Immunocytochemical staining of HeLa cells with CDC25C antibody (Cat#61384, 1:1,000). Nuclei were stained blue with DAPI; CDC25C was stained magenta with Alexa Fluor® 647. Images were taken using Leica stellaris 5. Protein abundance based on laser Intensity and smart gain: Medium. Scale bar: 20  $\mu$ m.



Western blotting analysis using anti-CDC25C antibody (Cat#61384). Total cell lysates (30  $\mu$ g) from various cell lines were loaded and separated by SDS-PAGE. The blot was incubated with anti-CDC25C antibody (Cat#61384, 1:5,000) and HRP-conjugated goat anti-rabbit secondary antibody (Cat#201, 1:20,000) respectively. Image was developed using FeQ™ ECL Substrate Kit (Cat#226).



Copyright ©2024 Genuin Biotechnologies LLC

Western blotting analysis using anti-CDC25C antibody (Cat#61384). CDC25C expression in wild type (WT) and CDC25C shRNA knockdown (KD) HeLa cells with 30 µg of total cell lysates. Hsp90 α serves as a loading control. The blot was incubated with anti-CDC25C antibody (Cat#61384, 1:5,000) and HRP-conjugated goat anti-rabbit secondary antibody (Cat#201, 1:20,000) respectively. Image was developed using FeQ™ ECL Substrate Kit (Cat#226).