

KD-Validated Anti-Caspase 1 Recombinant Rabbit Monoclonal Antibody



Catalog #: 61385

Aliases

CASP1; Caspase 1; ICE; Caspase-1; IL1BC; Caspase 1, Apoptosis-Related Cysteine Peptidase; Interleukin 1, Beta, Convertase; IL-1 Beta-Converting Enzyme; EC 3.4.22.36; P45; Caspase 1, Apoptosis-Related Cysteine Peptidase (Interleukin 1, Beta, Convertase); Caspase 1, Apoptosis-Related Cysteine Protease (Interleukin 1, Beta, Convertase); Interleukin-1 Beta-Converting Enzyme; Interleukin 1-B Converting Enzyme; Interleukin-1 Beta Convertase; IL1B-Convertase; EC 3.4.22; IL1BCE; CASP-1; IL-1BC

Background

NCBI Gene Entry: [834](#)

UniProt Entry: [P29466](#)

Application Information

Molecular Weight: Predicted, 45 kDa; observed, 45 kDa

Clonality: Rabbit monoclonal antibody

Clone ID: 25GB2415

Species Reactivity: Human, mouse

Applications Tested: Western blotting (WB), flow cytometry(FCM), immunocytochemistry (IC)

Immunogen

A synthesized peptide derived from human Caspase-1

Isotype

Rabbit IgG

Storage Buffer

Supplied in PBS (pH 7.4) containing 50% glycerol, and 0.02% sodium azide.

Storage

Store at -20 °C for one year.

Recommended Dilutions

Western Blotting (WB): 1:1,000-1:5,000

Flow Cytometry (FCM): 1:200-1:2,000

Immunocytochemistry (IC): 1:100-1:1,000

SUPPORT

SUPPORT@GENUINBIOTECH.COM
TEL: +1-540-855-7041

ORDERS

SALES@GENUINBIOTECH.COM
FAX: +1-540-855-7041

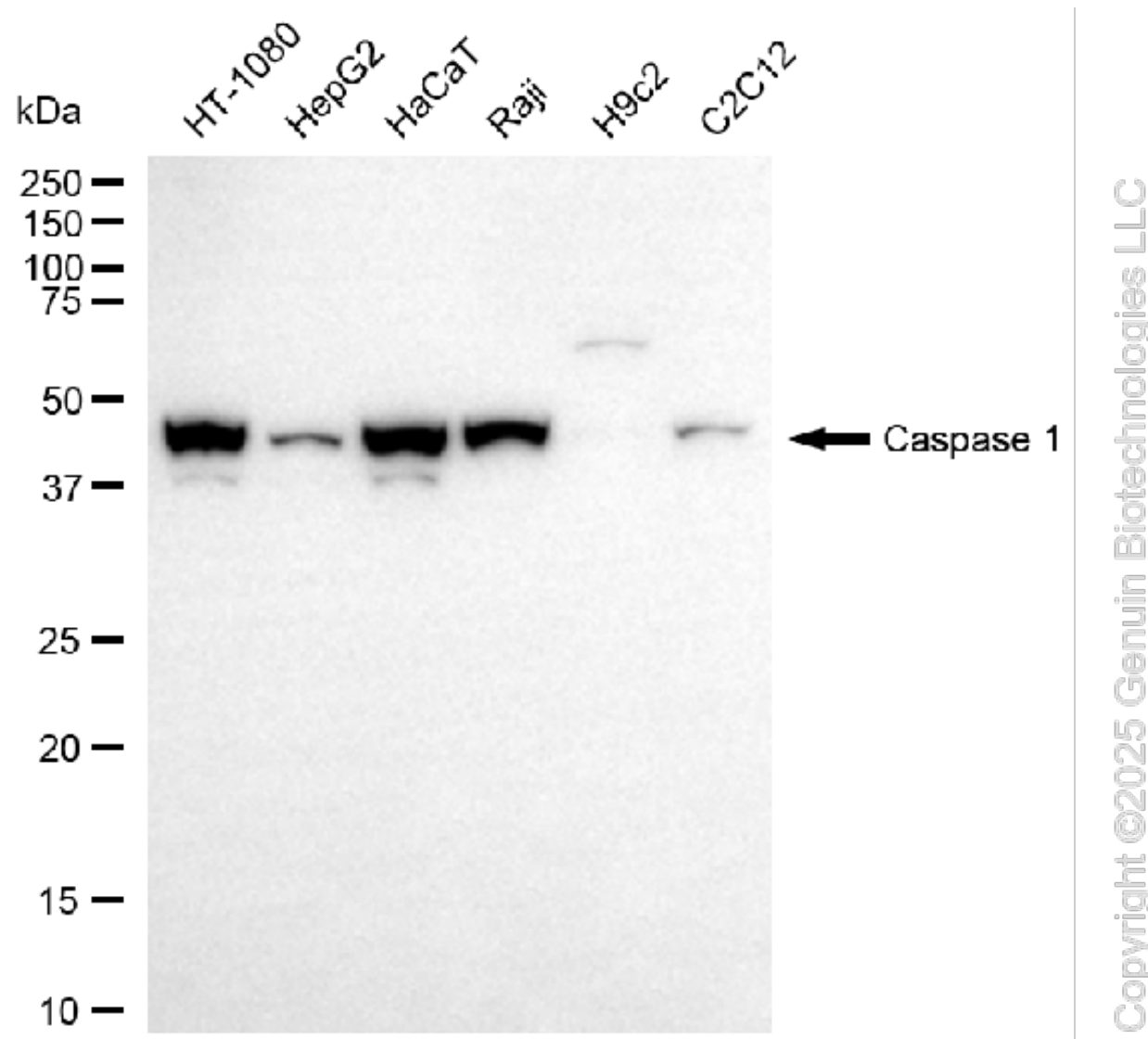
WWW.GENUINBIOTECH.COM

KD-Validated Anti-Caspase 1 Recombinant Rabbit Monoclonal Antibody

PAGE 2

Note: This product is for research use only.

Validation Data



Western blotting analysis using anti-caspase 1 antibody (Cat#61385). Total cell lysates (30 µg) from various cell lines were loaded and separated by SDS-PAGE. The blot was incubated with anti-caspase 1 antibody (Cat#61385, 1:5,000) and HRP-conjugated goat anti-rabbit secondary antibody (Cat#201, 1:20,000) respectively. Image was developed using FeQ™ ECL Substrate Kit (Cat#226).

SUPPORT

SUPPORT@GENUINBIOTECH.COM
TEL: +1-540-855-7041

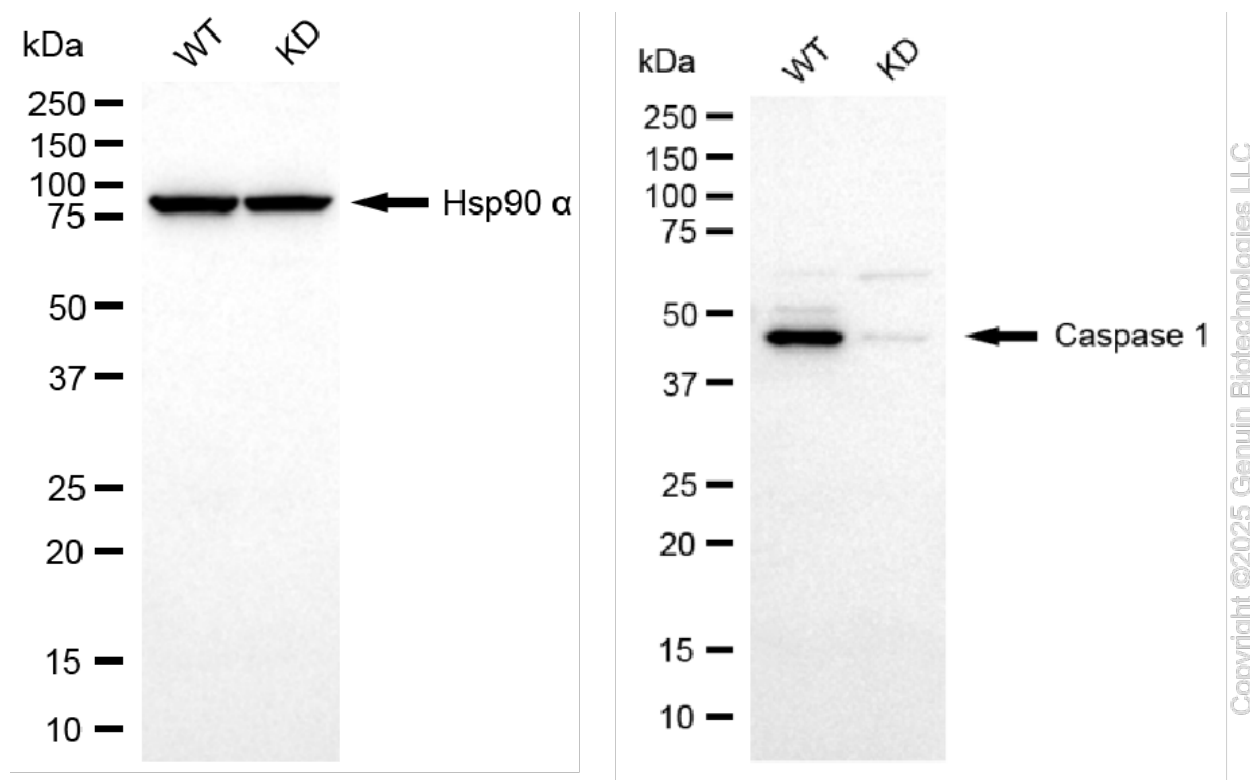
ORDERS

SALES@GENUINBIOTECH.COM
FAX: +1-540-855-7041

WWW.GENUINBIOTECH.COM

KD-Validated Anti-Caspase 1 Recombinant Rabbit Monoclonal Antibody

PAGE 3



Western blotting analysis using anti-caspase 1 antibody (Cat#61385). Caspase 1 expression in wild-type (WT) and caspase 1 (CASP1) knockdown (KD) HT-1080 cells with 20 µg of total cell lysates. Hsp90 α serves as a loading control. The blot was incubated with anti-caspase 1 antibody (Cat#61385, 1:5,000) and HRP-conjugated goat anti-rabbit secondary antibody (Cat#201, 1:20,000) respectively. Image was developed using NaQ™ ECL Substrate Kit (Cat#716).

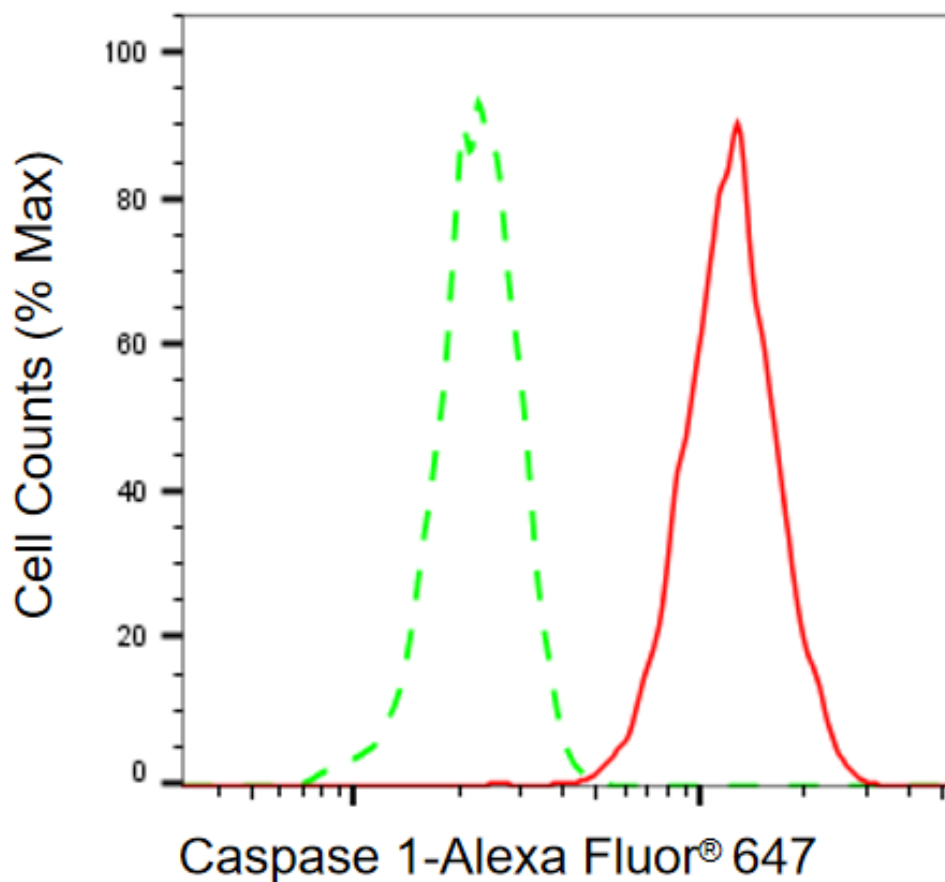
SUPPORT

SUPPORT@GENUINBIOTECH.COM
TEL: +1-540-855-7041

ORDERS

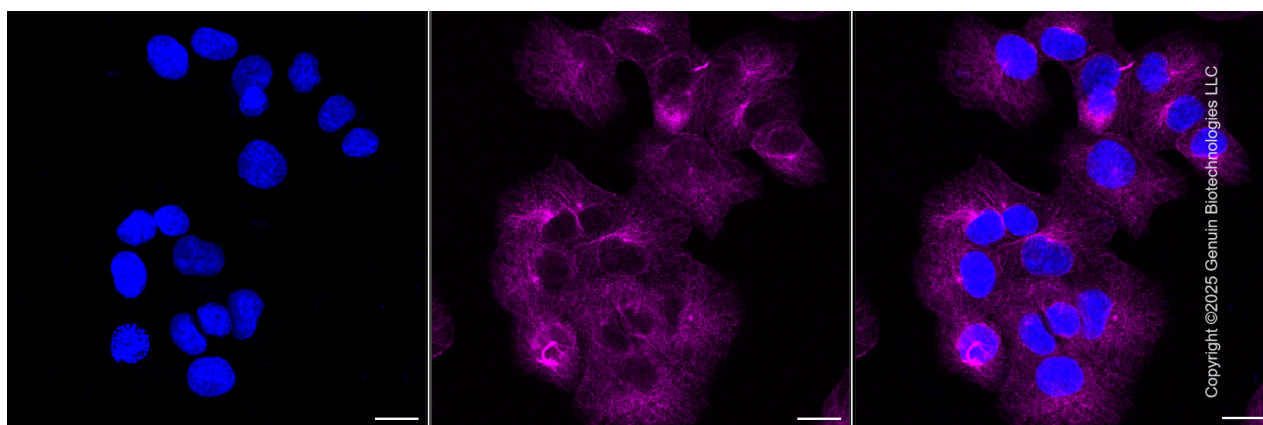
SALES@GENUINBIOTECH.COM
FAX: +1-540-855-7041

WWW.GENUINBIOTECH.COM



Copyright ©2025 Genuin Biotechnologies LLC

Flow cytometric analysis of Caspase 1 expression in HT-1080 cells using Caspase 1 antibody (Cat#61385, 1:2000). Green, isotype control; red, Caspase 1.



Immunocytochemical staining of HT-1080 cells with anti-Caspase 1 antibody (Cat#61385, 1:1000). Nuclei were stained blue with DAPI; Caspase 1 was stained magenta with Alexa Fluor® 647. Images were taken using Leica stellaris 5. Protein abundance based on laser Intensity and smart gain: Medium. Scale bar, 20 µm.

SUPPORT

SUPPORT@GENUINBIOTECH.COM
TEL: +1-540-855-7041

ORDERS

SALES@GENUINBIOTECH.COM
FAX: +1-540-855-7041

WWW.GENUINBIOTECH.COM

SUPPORT

SUPPORT@GENUINBIOTECH.COM
TEL: +1-540-855-7041

ORDERS

SALES@GENUINBIOTECH.COM
FAX:+1-540-855-7041

WWW.GENUINBIOTECH.COM