

# KD-Validated Anti-CDC16 Recombinant Rabbit Monoclonal Antibody



**Catalog #: 61386**

## Aliases

CDC16; Cell Division Cycle 16; ANAPC6; APC6; CUT9; Cell Division Cycle Protein 16 Homolog; Anaphase-Promoting Complex, Subunit 6; Cyclosome Subunit 6; CDC16Hs; CDC16 (Cell Division Cycle 16, *S. Cerevisiae*, Homolog); CDC16 Cell Division Cycle 16 Homolog (*S. Cerevisiae*); Cell Division Cycle 16 Homolog (*S. Cerevisiae*); Anaphase-Promoting Complex Subunit 6; Cell Division Cycle 16 Homolog; CDC16 Homolog

## Background

Gene Name: CDC16  
NCBI Gene Entry: [8881](#)  
UniProt Entry: [Q13042](#)

## Application Information

Molecular Weight: Predicted, 72 kDa, observed, 72 kDa  
Clonality: Rabbit monoclonal antibody  
Clone ID: 23GB3415  
Species Reactivity: Human, mouse, rat  
Applications Tested: Western blotting (WB), flow cytometry (FCM), immunocytochemistry (IC)

## Immunogen

A synthesized peptide derived from human Cdc16/APC6

## Isotype

Rabbit IgG

## Storage Buffer

Supplied in PBS (pH 7.4) containing 50% glycerol, and 0.02% sodium azide.

## Storage

Store at -20 °C for one year.

## Recommended Dilutions

Western Blotting (WB): 1:1,000-1:5,000  
Flow Cytometry (FCM): 1:2,000  
Immunocytochemistry (IC): 1:100-1:1,000

---

### SUPPORT

SUPPORT@GENUINBIOTECH.COM  
TEL: +1-540-855-7041

### ORDERS

SALES@GENUINBIOTECH.COM  
FAX: +1-540-855-7041

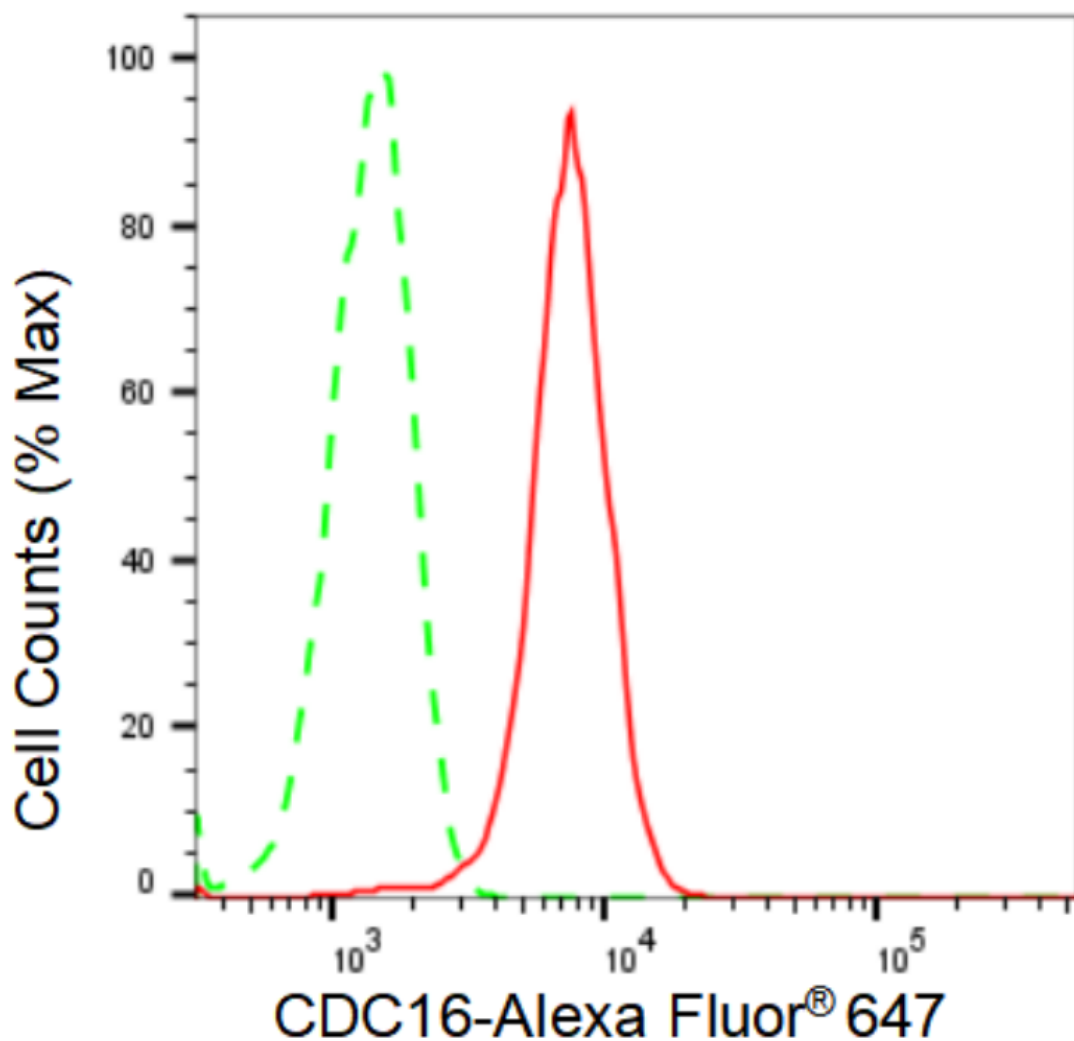
[WWW.GENUINBIOTECH.COM](http://WWW.GENUINBIOTECH.COM)

# KD-Validated Anti-CDC16 Recombinant Rabbit Monoclonal Antibody

PAGE 2

**Note:** This product is for research use only.

## Validation Data



Copyright ©2024 Genuin Biotechnologies LLC

Flow cytometric analysis of CDC16 expression in HeLa cells using CDC16 antibody (Cat#61386, 1:2,000). Green, isotype control; red, CDC16.

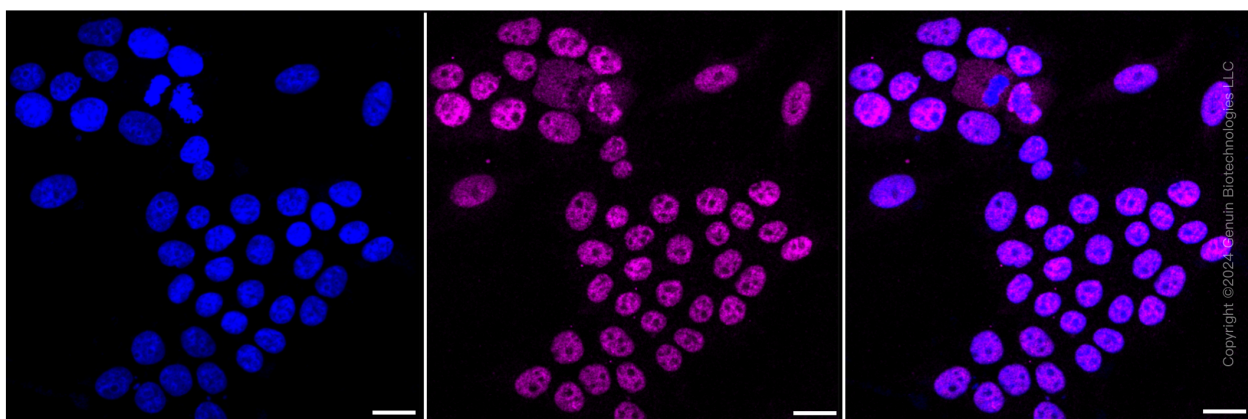
### SUPPORT

SUPPORT@GENUINBIOTECH.COM  
TEL: +1-540-855-7041

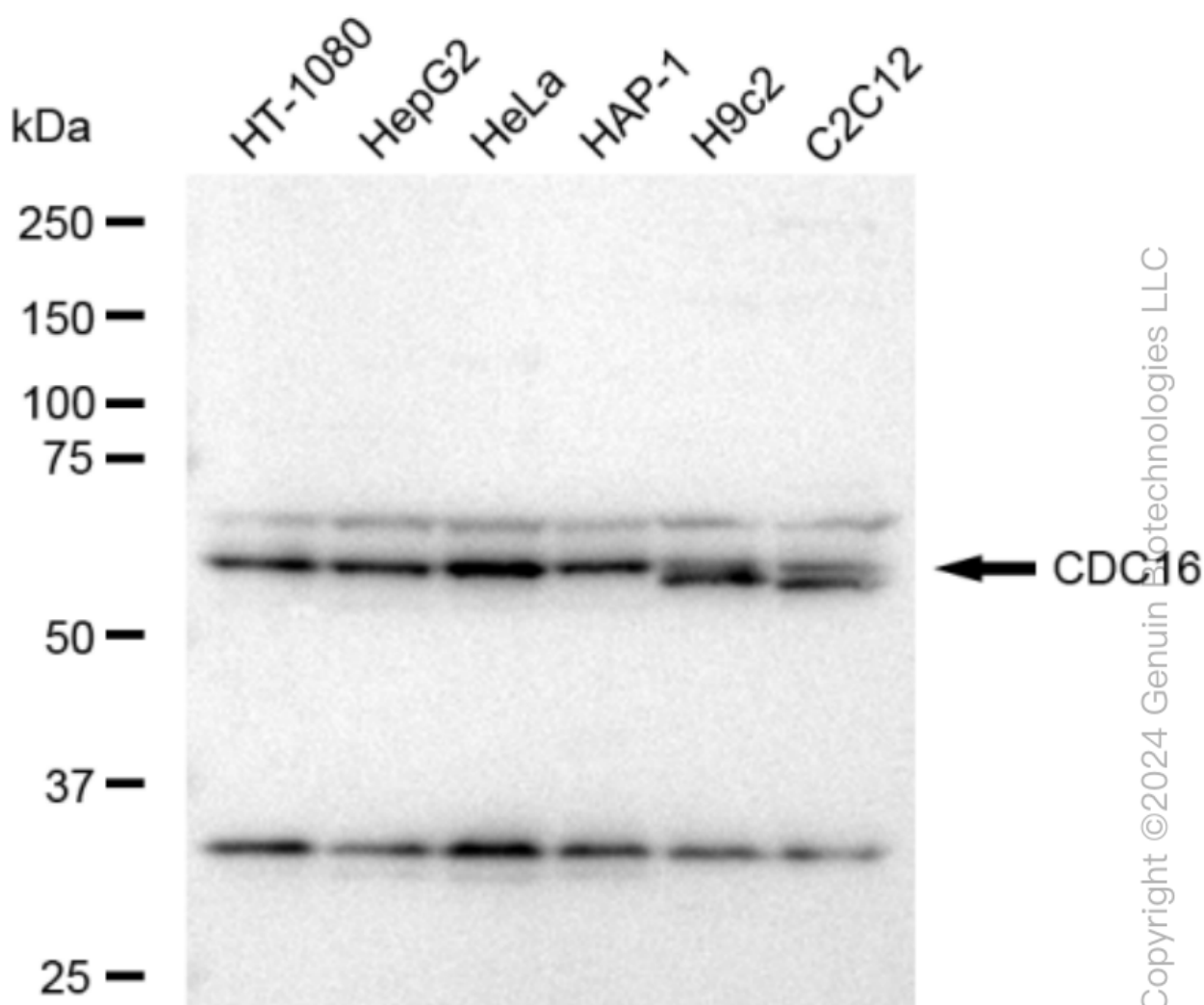
### ORDERS

SALES@GENUINBIOTECH.COM  
FAX: +1-540-855-7041

[WWW.GENUINBIOTECH.COM](http://WWW.GENUINBIOTECH.COM)



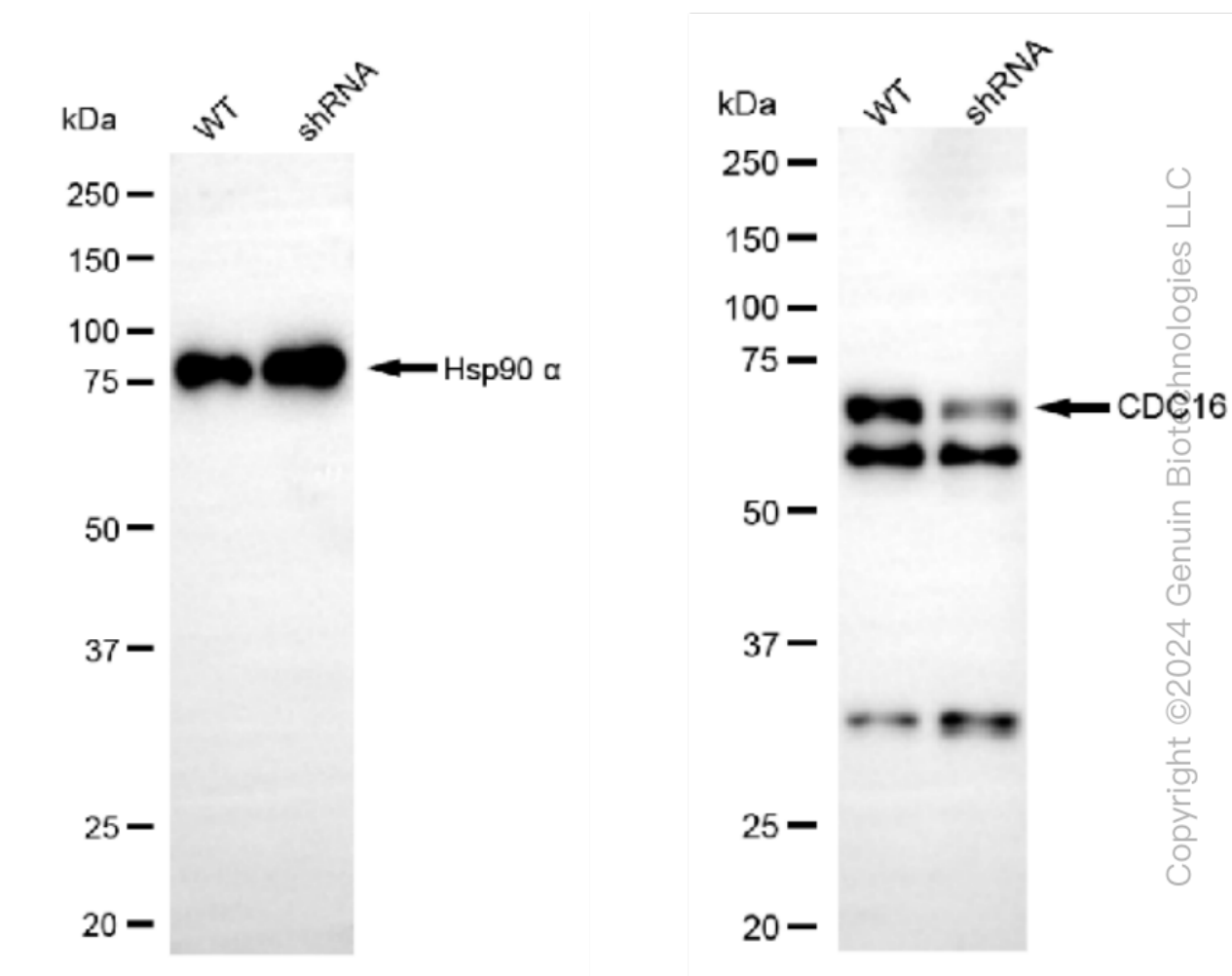
Immunocytochemical staining of HeLa cells with CDC16 antibody (Cat#61386, 1:1,000). Nuclei were stained blue with DAPI; CDC16 was stained magenta with Alexa Fluor® 647. Images were taken using Leica stellaris 5. Protein abundance based on laser Intensity and smart gain: Medium. Scale bar: 20  $\mu$ m.



## KD-Validated Anti-CDC16 Recombinant Rabbit Monoclonal Antibody

PAGE 4

Western blotting analysis using anti-CDC16 antibody (Cat#61386). Total cell lysates (30 µg) from various cell lines were loaded and separated by SDS-PAGE. The blot was incubated with anti-CDC16 antibody (Cat#61386, 1:5,000) and HRP-conjugated goat anti-rabbit secondary antibody (Cat#201, 1:20,000) respectively. Image was developed using FeQ™ ECL Substrate Kit (Cat#226).



Western blotting analysis using anti-CDC16 antibody (Cat#61386). CDC16 expression in wild type (WT) and CDC16 shRNA knockdown (KD) HeLa cells with 30 µg of total cell lysates. β-Tubulin serves as a loading control. The blot was incubated with anti-CDC16 antibody (Cat#61386, 1:5,000) and HRP-conjugated goat anti-rabbit secondary antibody (Cat#201, 1:20,000) respectively. Image was developed using FeQ™ ECL Substrate Kit (Cat#226).

### SUPPORT

SUPPORT@GENUINBIOTECH.COM  
TEL: +1-540-855-7041

### ORDERS

SALES@GENUINBIOTECH.COM  
FAX: +1-540-855-7041

[WWW.GENUINBIOTECH.COM](http://WWW.GENUINBIOTECH.COM)