

# KD-Validated Anti-CDC40 Recombinant Rabbit Monoclonal Antibody



**Catalog #: 61387**

## Aliases

CDC40; Cell Division Cycle 40; PRPF17; PRP17; EHB3; Cell Division Cycle 40 Homolog; Pre-MRNA-Processing Factor 17; EH-Binding Protein 3; PRP17 Homolog; FLJ10564; HPRP17; Cell Division Cycle 40 Homolog (S. Cerevisiae); Cell Division Cycle 40 Homolog (Yeast); Pre-mRNA Splicing Factor 17; PCH15; Ehb3

## Background

Gene Name: CDC40

NCBI Gene Entry: [51362](#)

UniProt Entry: [O60508](#)

## Application Information

Molecular Weight: Predicted, 66 kDa, observed, 74 kDa

Clonality: Rabbit monoclonal antibody

Clone ID: 23GB3445

Species Reactivity: Human, mouse, rat

Applications Tested: Western blotting (WB), flow cytometry (FCM), immunocytochemistry (IC)

## Immunogen

A synthesized peptide derived from human CDC40

## Isotype

Rabbit IgG

## Storage Buffer

Supplied in PBS (pH 7.4) containing 50% glycerol, and 0.02% sodium azide.

## Storage

Store at -20 °C for one year.

## Recommended Dilutions

Western Blotting (WB): 1:1,000-1:5,000

Flow Cytometry (FCM): 1:2,000

Immunocytochemistry (IC): 1:100-1:1,000

---

### SUPPORT

SUPPORT@GENUINBIOTECH.COM  
TEL: +1-540-855-7041

### ORDERS

SALES@GENUINBIOTECH.COM  
FAX: +1-540-855-7041

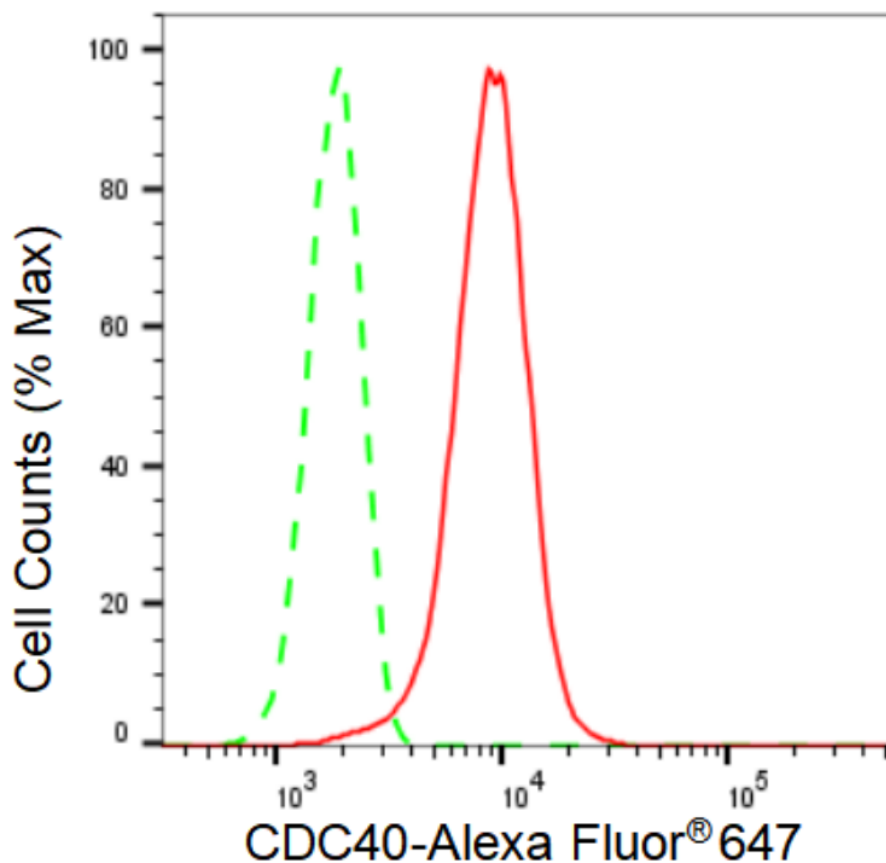
[WWW.GENUINBIOTECH.COM](http://WWW.GENUINBIOTECH.COM)

# KD-Validated Anti-CDC40 Recombinant Rabbit Monoclonal Antibody

PAGE 2

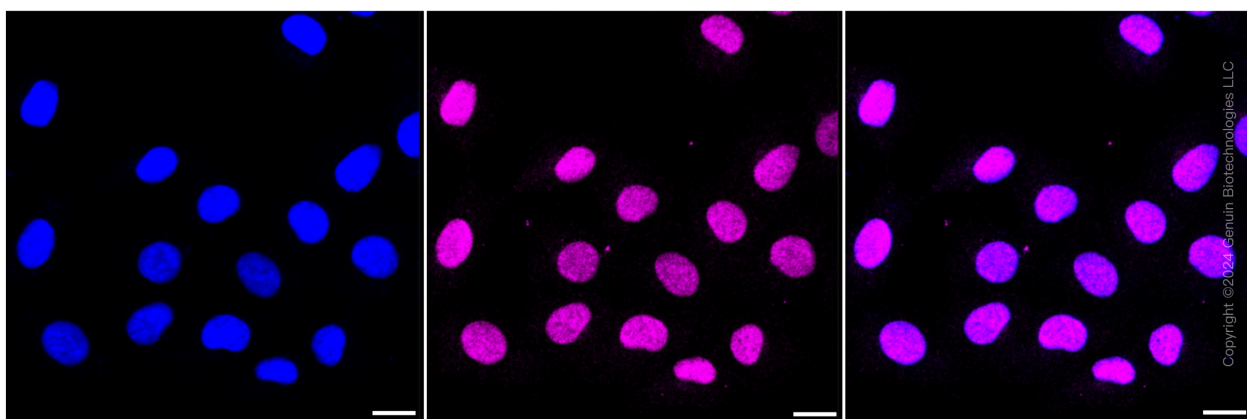
**Note:** This product is for research use only.

## Validation Data



Copyright ©2024 Genuin Biotechnologies LLC

Flow cytometric analysis of CDC40 expression in HT-1080 cells using CDC40 antibody (Cat#61387, 1:2,000). Green, isotype control; red, CDC40.



Copyright ©2024 Genuin Biotechnologies LLC

### SUPPORT

SUPPORT@GENUINBIOTECH.COM  
TEL: +1-540-855-7041

### ORDERS

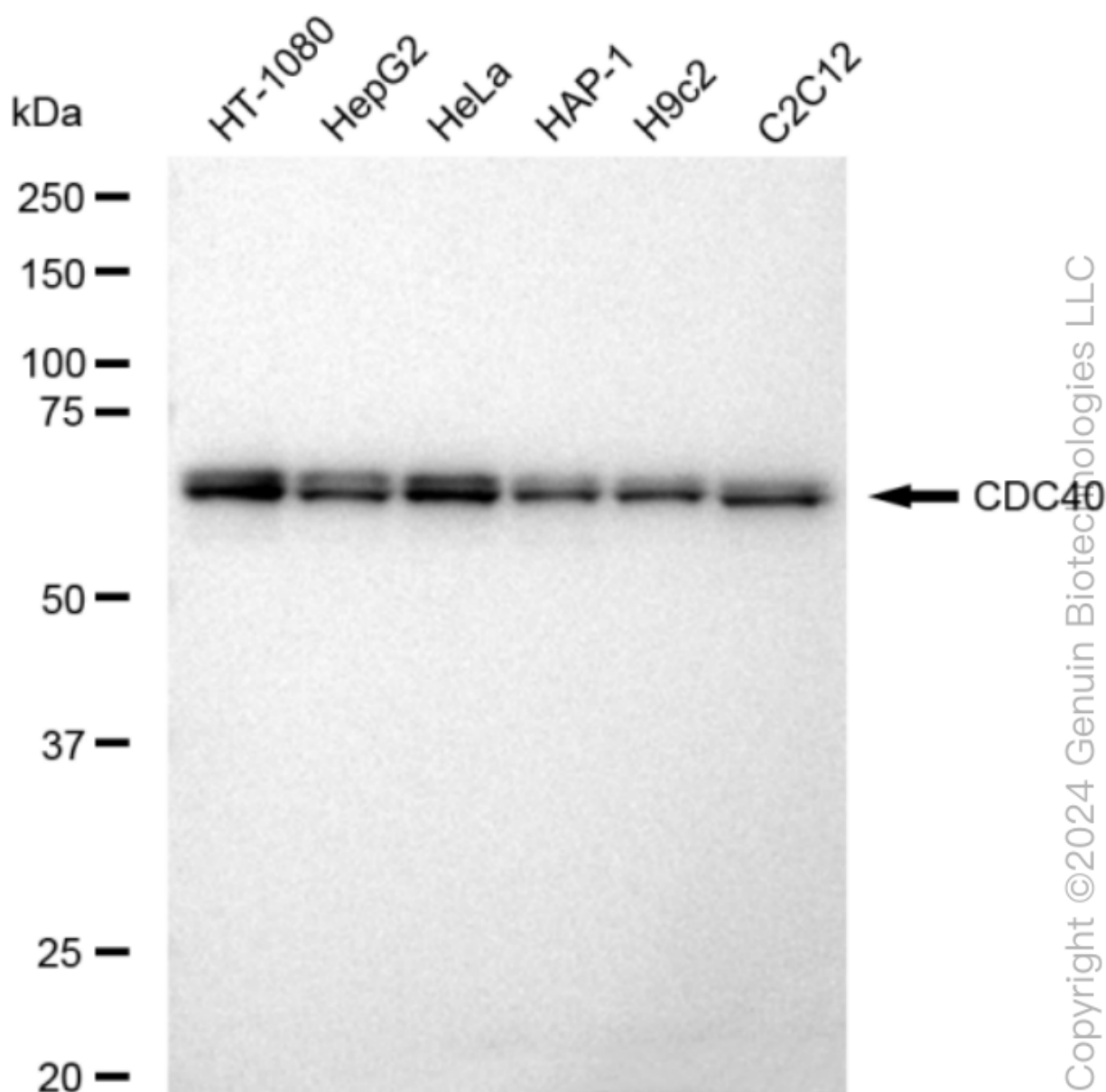
SALES@GENUINBIOTECH.COM  
FAX: +1-540-855-7041

WWW.GENUINBIOTECH.COM

## KD-Validated Anti-CDC40 Recombinant Rabbit Monoclonal Antibody

PAGE 3

gain: Medium. Scale bar: 20  $\mu$ m.



Western blotting analysis using anti-CDC40 antibody (Cat#61387). Total cell lysates (30  $\mu$ g) from various cell lines were loaded and separated by SDS-PAGE. The blot was incubated with anti-CDC40 antibody (Cat#61387, 1:5,000) and HRP-conjugated goat anti-rabbit secondary antibody (Cat#201, 1:20,000) respectively. Image was developed using FeQ<sup>TM</sup> ECL Substrate Kit (Cat#226).

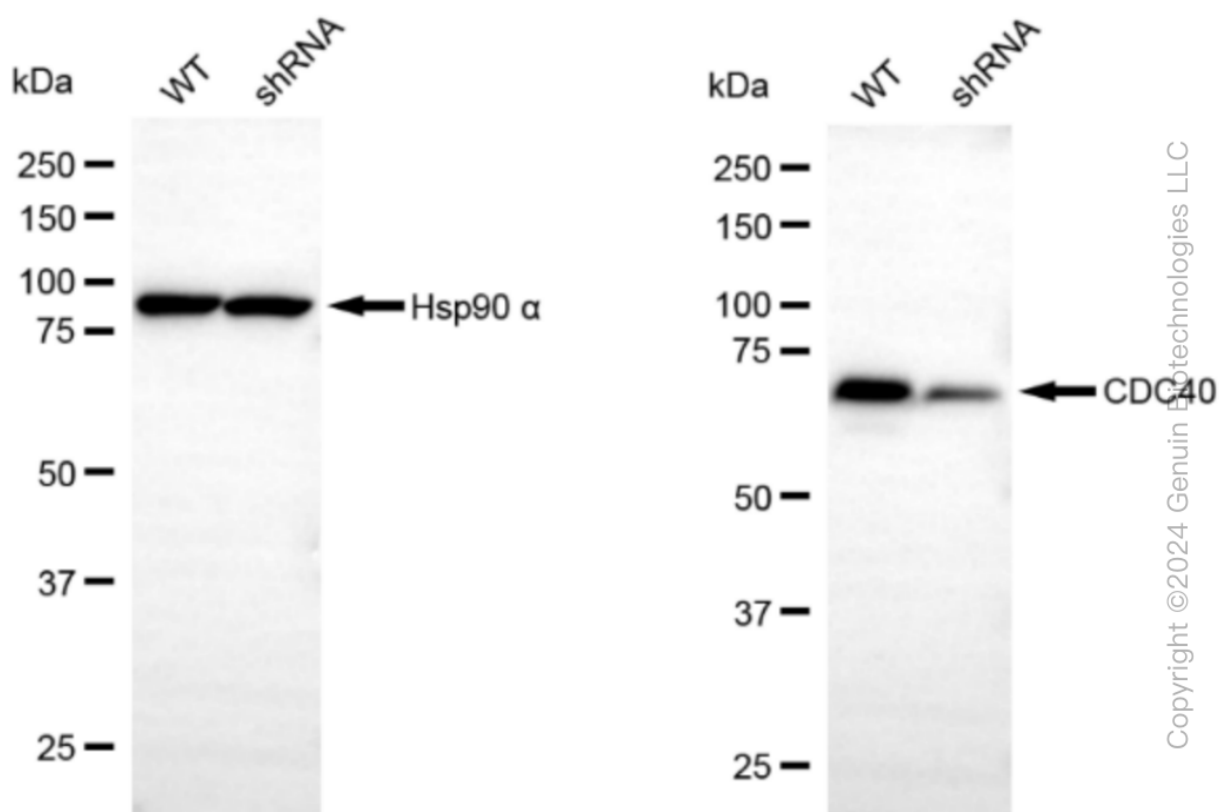
### SUPPORT

SUPPORT@GENUINBIOTECH.COM  
TEL: +1-540-855-7041

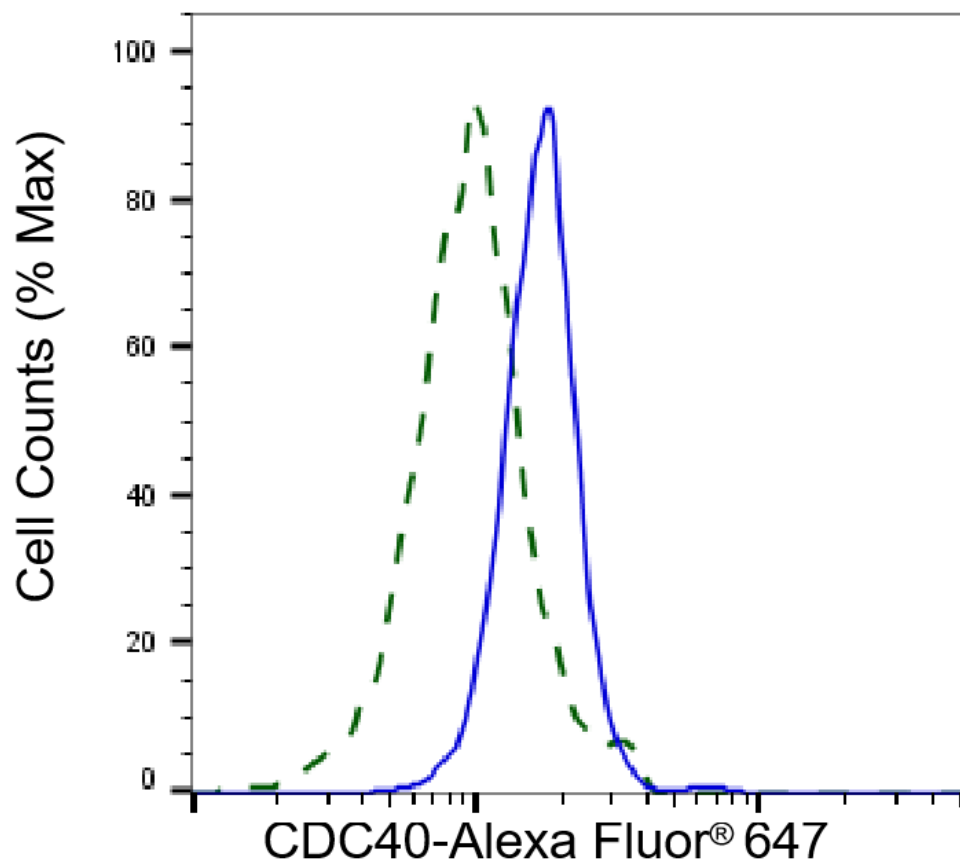
### ORDERS

SALES@GENUINBIOTECH.COM  
FAX: +1-540-855-7041

[WWW.GENUINBIOTECH.COM](http://WWW.GENUINBIOTECH.COM)



Western blotting analysis using anti-CDC40 antibody (Cat#61387). CDC40 expression in wild type (WT) and CDC40 shRNA knockdown (KD) HeLa cells with 30 µg of total cell lysates. β-Tubulin serves as a loading control. The blot was incubated with anti-CDC40 antibody (Cat#61387, 1:5,000) and HRP-conjugated goat anti-rabbit secondary antibody (Cat#201, 1:20,000) respectively. Image was developed using FeQ™ ECL Substrate Kit (Cat#226).



Validation of CDC40 knockdown using flow cytometry. Wild-type(WT, Blue) and knockdown(KD, Green) HeLa cells were stained with anti-CDC40 antibody (Cat#61387, 1:2,000) and analyzed using BD flow cytometer.