

KD-Validated Anti-ABCG2 Recombinant Rabbit Monoclonal Antibody



Catalog #: 61391

Aliases

ABCG2; ATP Binding Cassette Subfamily G Member 2 (Junior Blood Group); BCRP; ABCP; MXR; EST157481; CD338; ATP-Binding Cassette, Sub-Family G (WHITE), Member 2 (Junior Blood Group); Broad Substrate Specificity ATP-Binding Cassette Transporter ABCG2; Placenta-Specific ATP-Binding Cassette Transporter; Mitoxantrone Resistance-Associated Protein; Breast Cancer Resistance Protein; Urate Exporter; CDw338; BCRP1; Broad Substrate Specificity ATP-Binding Cassette Transporter ABCG2 Isoform 1 (Junior Blood Group); Multi Drug Resistance Efflux Transport ATP-Binding Cassette Sub-Family G (WHITE) Member 2; ATP-Binding Cassette, Sub-Family G (WHITE), Member 2; ATP-Binding Cassette Sub-Family G Member02; ATPbinding Cassette Transporter ABCG2; ATP-Binding Cassette Transporter G2; Placenta Specific MDR Protein 2; ABC Transporter; CD338 Antigen; EC 7.6.2.2; CDw38; UAQTL1; ABC15; GOUT1; MXR-1; BMDP; MXR1; MRX

Background

Gene Name: ABCG2

NCBI Gene Entry: [9429](#)

UniProt Entry: [Q9UNQ0](#)

Application Information

Molecular Weight: Predicted, 72 kDa, observed, 72 kDa

Clonality: Rabbit monoclonal antibody

Clone ID: 23GB3130

Species Reactivity: Human

Applications Tested: Western blotting (WB), flow cytometry (FCM), immunocytochemistry (IC)

Immunogen

A synthesized peptide derived from human ABCG2

Isotype

Rabbit IgG

Storage Buffer

Supplied in PBS (pH 7.4) containing 50% glycerol, and 0.02% sodium azide.

Storage

Store at -20 °C for one year.

SUPPORT

SUPPORT@GENUINBIOTECH.COM
TEL: +1-540-855-7041

ORDERS

SALES@GENUINBIOTECH.COM
FAX: +1-540-855-7041

WWW.GENUINBIOTECH.COM

Recommended Dilutions

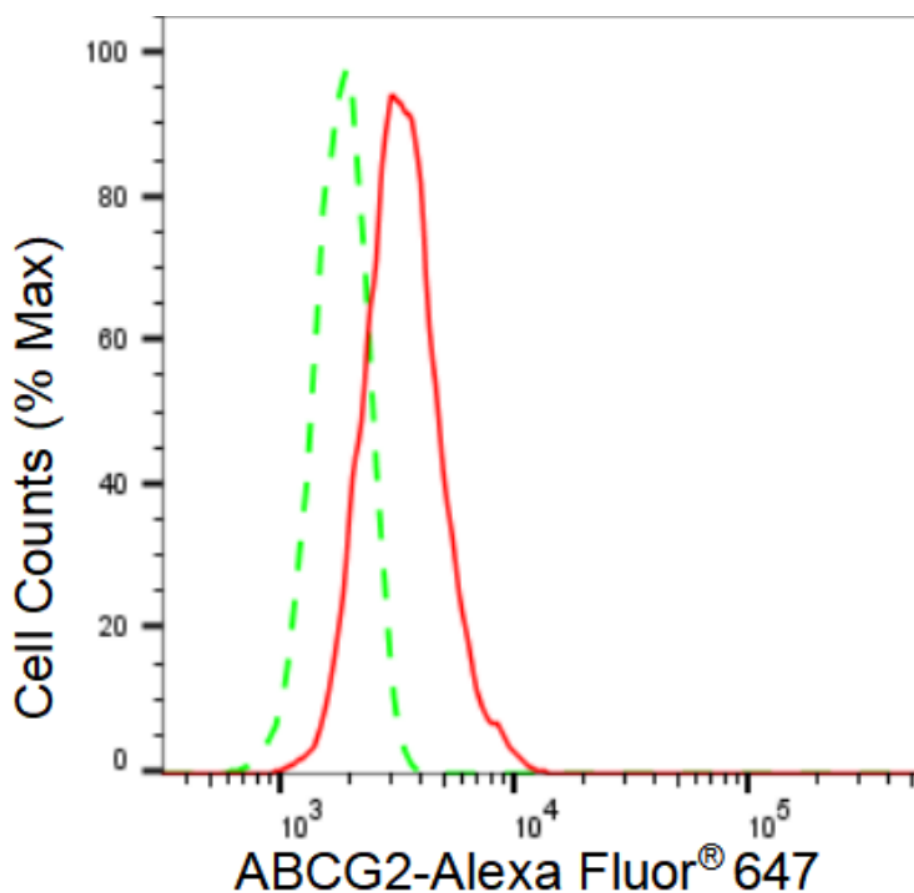
Western Blotting (WB): 1:1,000-1:5,000

Flow Cytometry (FCM): 1:2,000

Immunocytochemistry (IC): 1:100-1:1,000

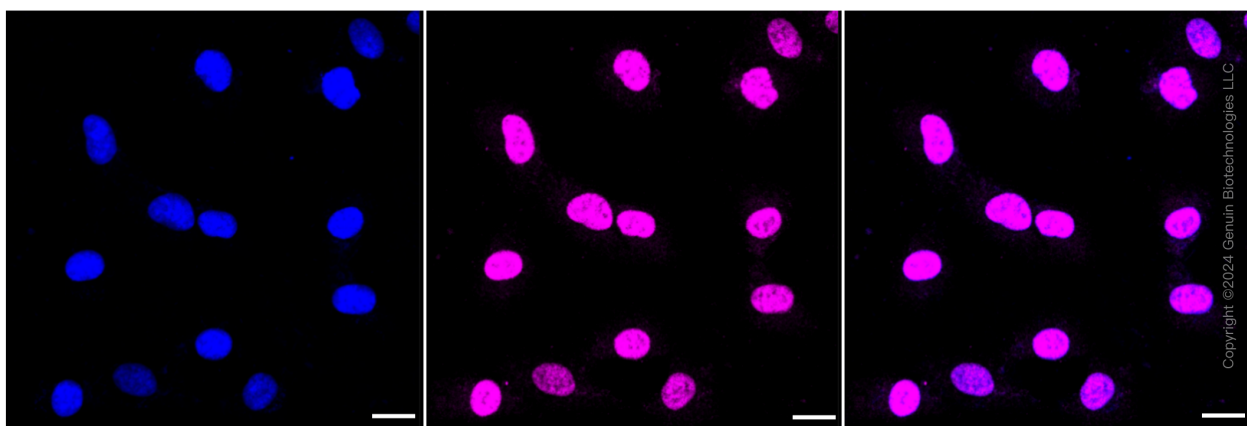
Note: This product is for research use only.

Validation Data

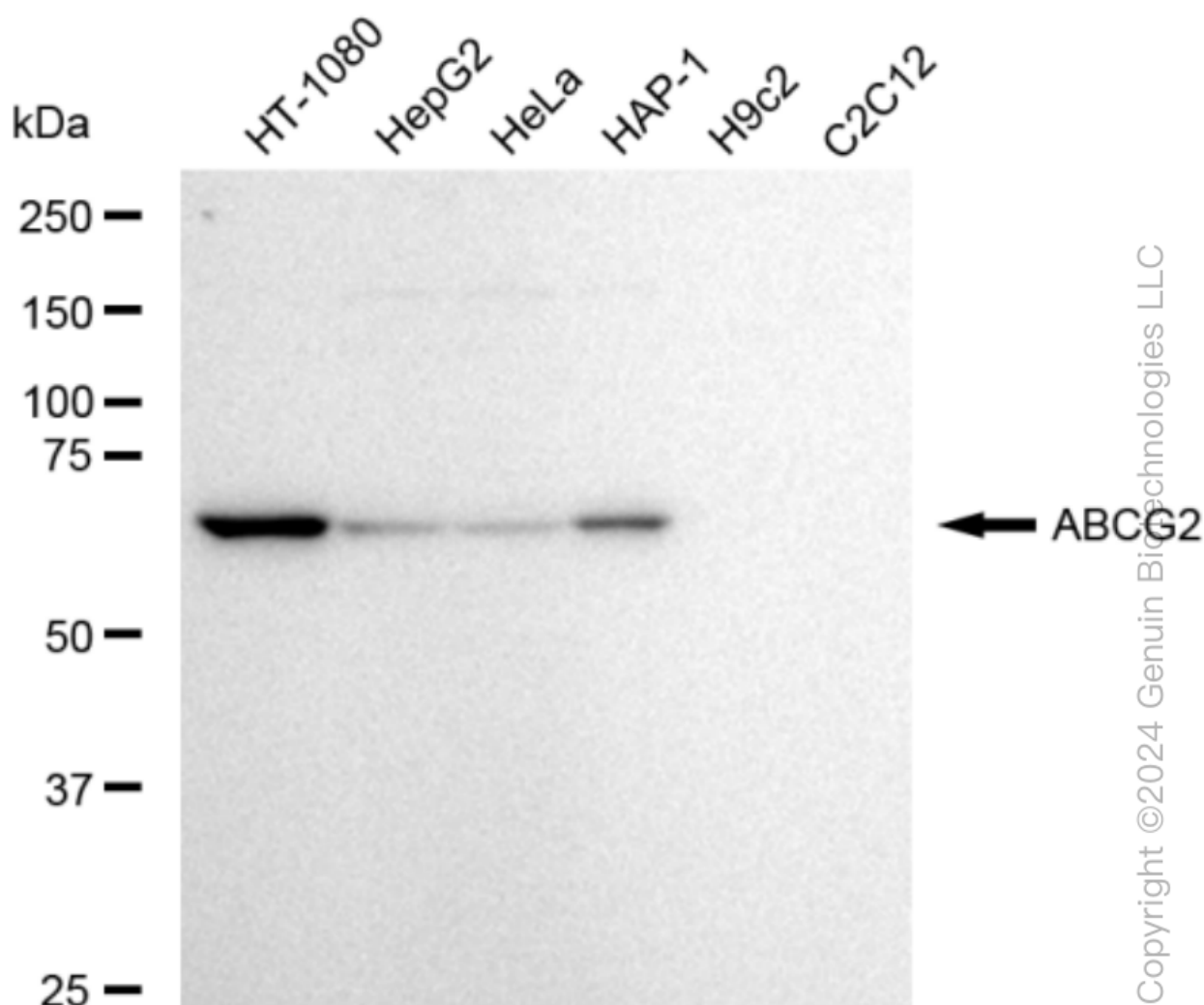


Copyright ©2024 Genuin Biotechnologies LLC

Flow cytometric analysis of ABCG2 expression in HT-1080 cells using ABCG2 antibody (Cat#61391, 1:2,000). Green, isotype control; red, ABCG2.



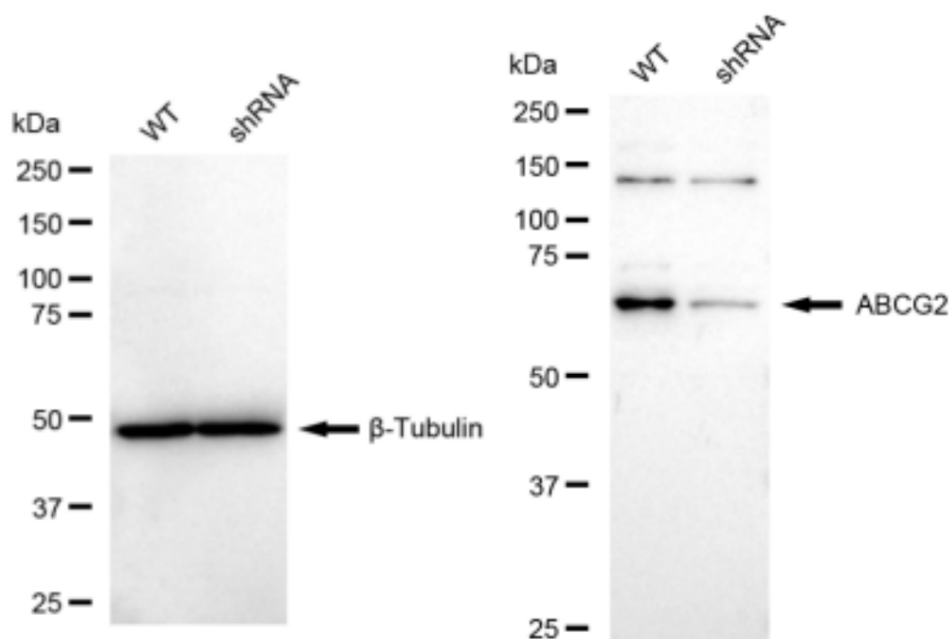
Immunocytochemical staining of HT-1080 cells with ABCG2 antibody (Cat#61391, 1:1,000). Nuclei were stained blue with DAPI; ABCG2 was stained magenta with Alexa Fluor® 647. Images were taken using Leica stellaris 5. Protein abundance based on laser Intensity and smart gain: Medium. Scale bar: 20 μ m.



KD-Validated Anti-ABCG2 Recombinant Rabbit Monoclonal Antibody

PAGE 4

Western blotting analysis using anti-ABCG2 antibody (Cat#61391). Total cell lysates (30 µg) from various cell lines were loaded and separated by SDS-PAGE. The blot was incubated with anti-ABCG2 antibody (Cat#61391, 1:5,000) and HRP-conjugated goat anti-rabbit secondary antibody (Cat#201, 1:20,000) respectively. Image was developed using FeQ™ ECL Substrate Kit (Cat#226).



Copyright ©2024 Genuin Biotechnologies LLC

Western blotting analysis using anti-ABCG2 antibody (Cat#61391). ABCG2 expression in wild type (WT) and ABCG2 shRNA knockdown (KD) HeLa cells with 30 µg of total cell lysates. β-Tubulin serves as a loading control. The blot was incubated with anti-ABCG2 antibody (Cat#61391, 1:5,000) and HRP-conjugated goat anti-rabbit secondary antibody (Cat#201, 1:20,000) respectively. Image was developed using FeQ™ ECL Substrate Kit (Cat#226).

SUPPORT

SUPPORT@GENUINBIOTECH.COM
TEL: +1-540-855-7041

ORDERS

SALES@GENUINBIOTECH.COM
FAX: +1-540-855-7041

WWW.GENUINBIOTECH.COM