

KD-Validated Anti-ATP2A2 Recombinant Rabbit Monoclonal Antibody



Catalog #: 61393

Aliases

ATP2A2; ATPase Sarcoplasmic/Endoplasmic Reticulum Ca²⁺ Transporting 2; SERCA2; Sarcoplasmic/Endoplasmic Reticulum Calcium ATPase 2; Calcium Pump 2; ATP2B; Endoplasmic Reticulum Class 1/2 Ca(2+) ATPase; SR Ca(2+)-ATPase; DAR; Calcium-Transporting ATPase Sarcoplasmic Reticulum Type, Slow Twitch Skeletal Muscle Isoform; ATPase, Ca⁺⁺ Transporting, Cardiac Muscle, Slow Twitch 2; ATPase Ca⁺⁺ Transporting Cardiac Muscle Slow Twitch 2; ATPase, Ca⁺⁺ Dependent, Slow-Twitch, Cardiac Muscle-2; Cardiac Ca²⁺ ATPase; EC 7.2.2.10; EC 3.6.3.8; EC 3.6.3; DD

Background

Gene Name: ATP2A2
NCBI Gene Entry: [488](#)
UniProt Entry: [P16615](#)

Application Information

Molecular Weight: Predicted, 115 kDa, observed, 110 kDa
Clonality: Rabbit monoclonal antibody
Clone ID: 23GB3250
Species Reactivity: Human, mouse, rat
Applications Tested: Western blotting (WB), flow cytometry (FCM), immunocytochemistry (IC)

Immunogen

A synthesized peptide derived from human SERCA2

Isotype

Rabbit IgG

Storage Buffer

Supplied in PBS (pH 7.4) containing 50% glycerol, and 0.02% sodium azide.

Storage

Store at -20 °C for one year.

Recommended Dilutions

Western Blotting (WB): 1:1,000-1:5,000
Flow Cytometry (FCM): 1:2,000

SUPPORT

SUPPORT@GENUINBIOTECH.COM
TEL: +1-540-855-7041

ORDERS

SALES@GENUINBIOTECH.COM
FAX: +1-540-855-7041

WWW.GENUINBIOTECH.COM

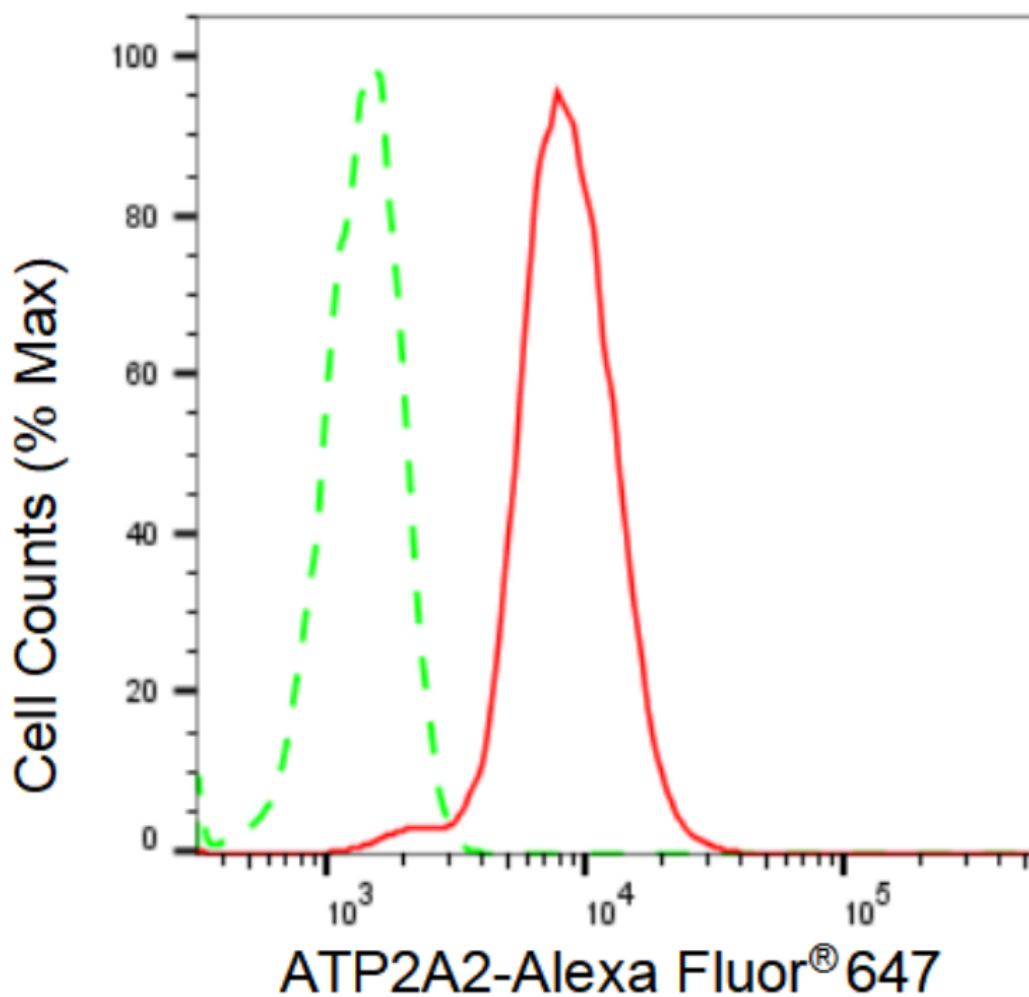
KD-Validated Anti-ATP2A2 Recombinant Rabbit Monoclonal Antibody

PAGE 2

Immunocytochemistry (IC): 1:100-1:1,000

Note: This product is for research use only.

Validation Data



Copyright ©2024 Genuin Biotechnologies LLC

Flow cytometric analysis of ATP2A2 expression in HeLa cells using ATP2A2 antibody (Cat#61393, 1:2,000). Green, isotype control; red, ATP2A2.

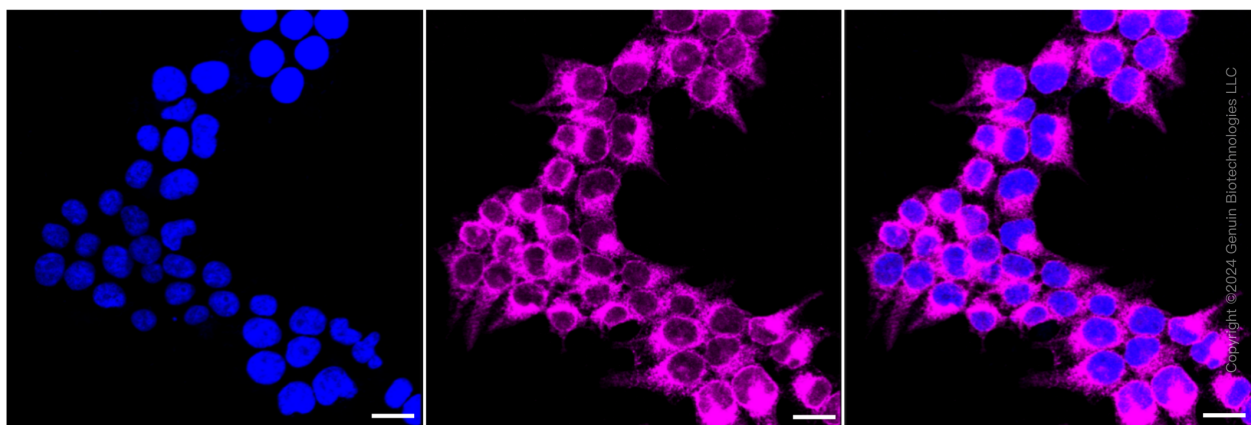
SUPPORT

SUPPORT@GENUINBIOTECH.COM
TEL: +1-540-855-7041

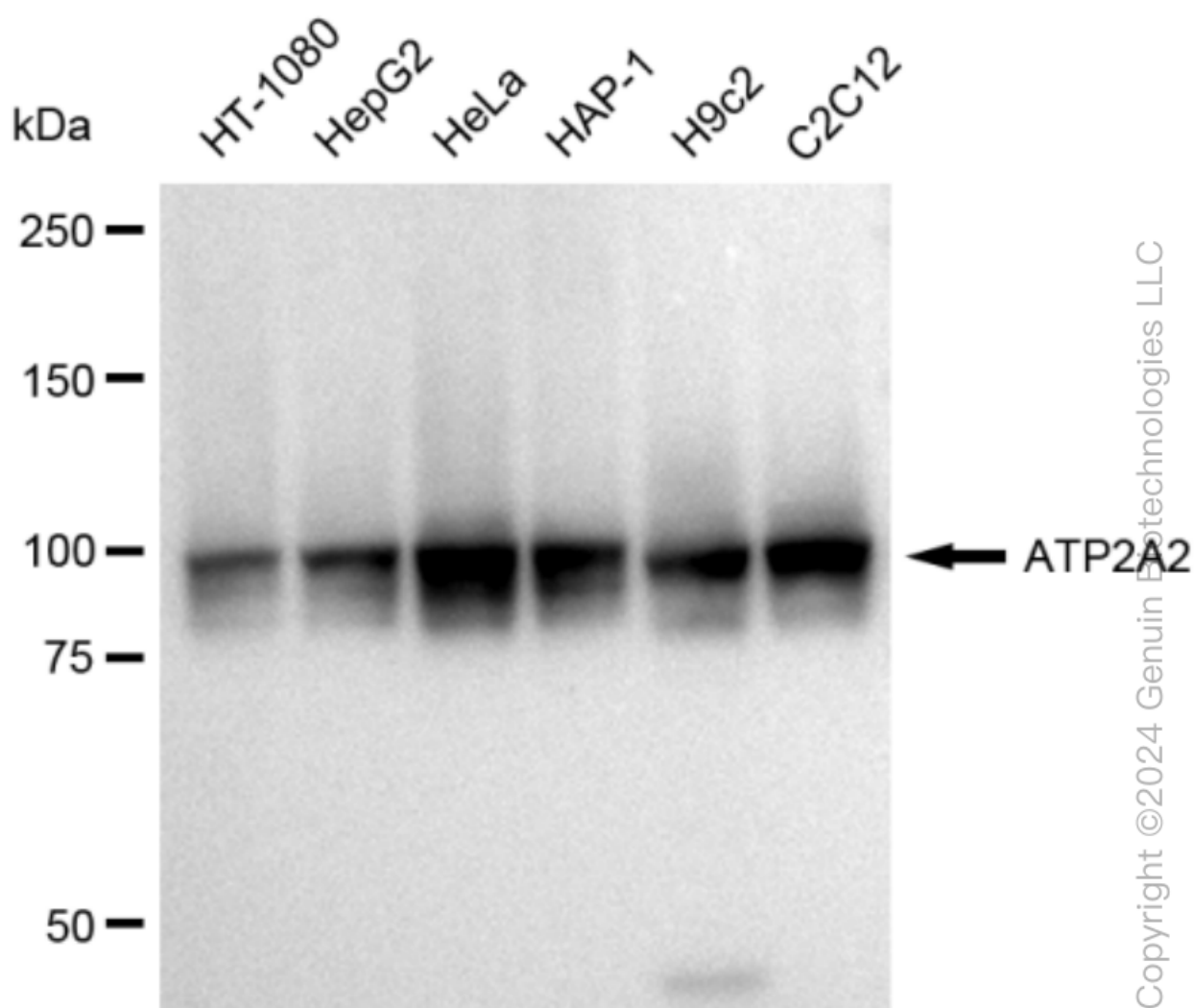
ORDERS

SALES@GENUINBIOTECH.COM
FAX: +1-540-855-7041

WWW.GENUINBIOTECH.COM



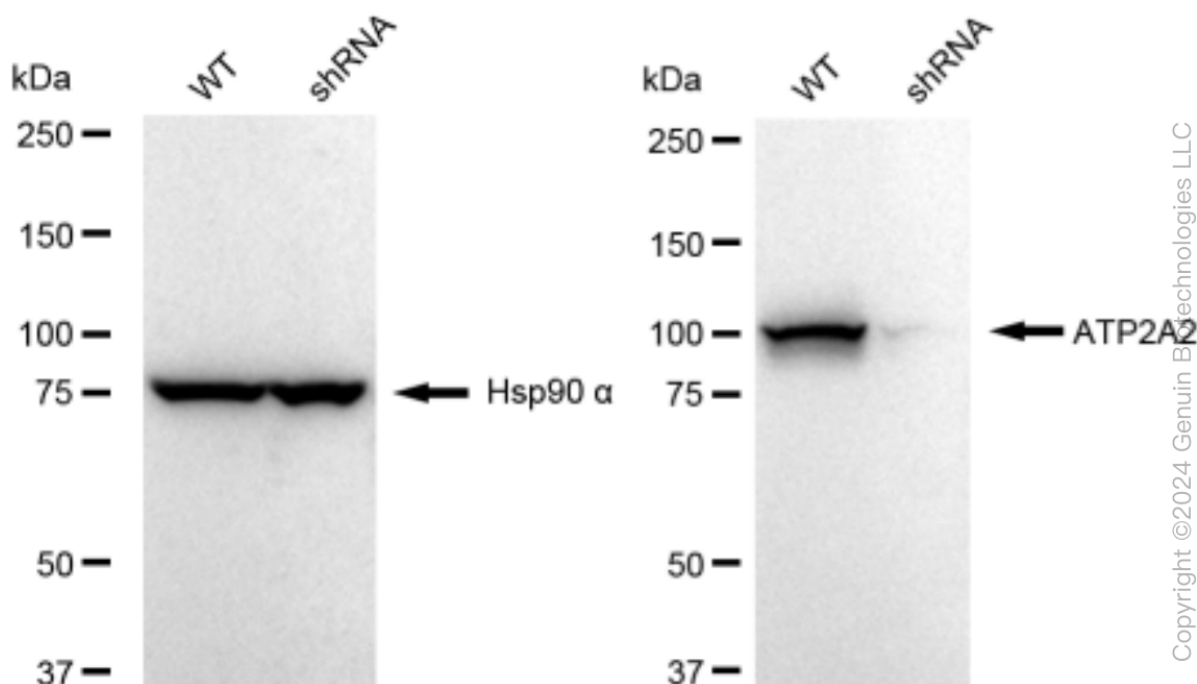
Immunocytochemical staining of HeLa cells with ATP2A2 antibody (Cat#61393, 1:1,000). Nuclei were stained blue with DAPI; ATP2A2 was stained magenta with Alexa Fluor® 647. Images were taken using Leica stellaris 5. Protein abundance based on laser Intensity and smart gain: Medium. Scale bar: 20 μ m.



KD-Validated Anti-ATP2A2 Recombinant Rabbit Monoclonal Antibody

PAGE 4

Western blotting analysis using anti-ATP2A2 antibody (Cat#61393). Total cell lysates (30 μ g) from various cell lines were loaded and separated by SDS-PAGE. The blot was incubated with anti-ATP2A2 antibody (Cat#61393, 1:5,000) and HRP-conjugated goat anti-rabbit secondary antibody (Cat#201, 1:20,000) respectively. Image was developed using FeQ™ ECL Substrate Kit (Cat#226).



Western blotting analysis using anti-ATP2A2 antibody (Cat#61393). ATP2A2 expression in wild type (WT) and ATP2A2 shRNA knockdown (KD) HeLa cells with 30 μ g of total cell lysates. Hsp90 α serves as a loading control. The blot was incubated with anti-ATP2A2 antibody (Cat#61393, 1:5,000) and HRP-conjugated goat anti-rabbit secondary antibody (Cat#201, 1:20,000) respectively. Image was developed using FeQ™ ECL Substrate Kit (Cat#226).

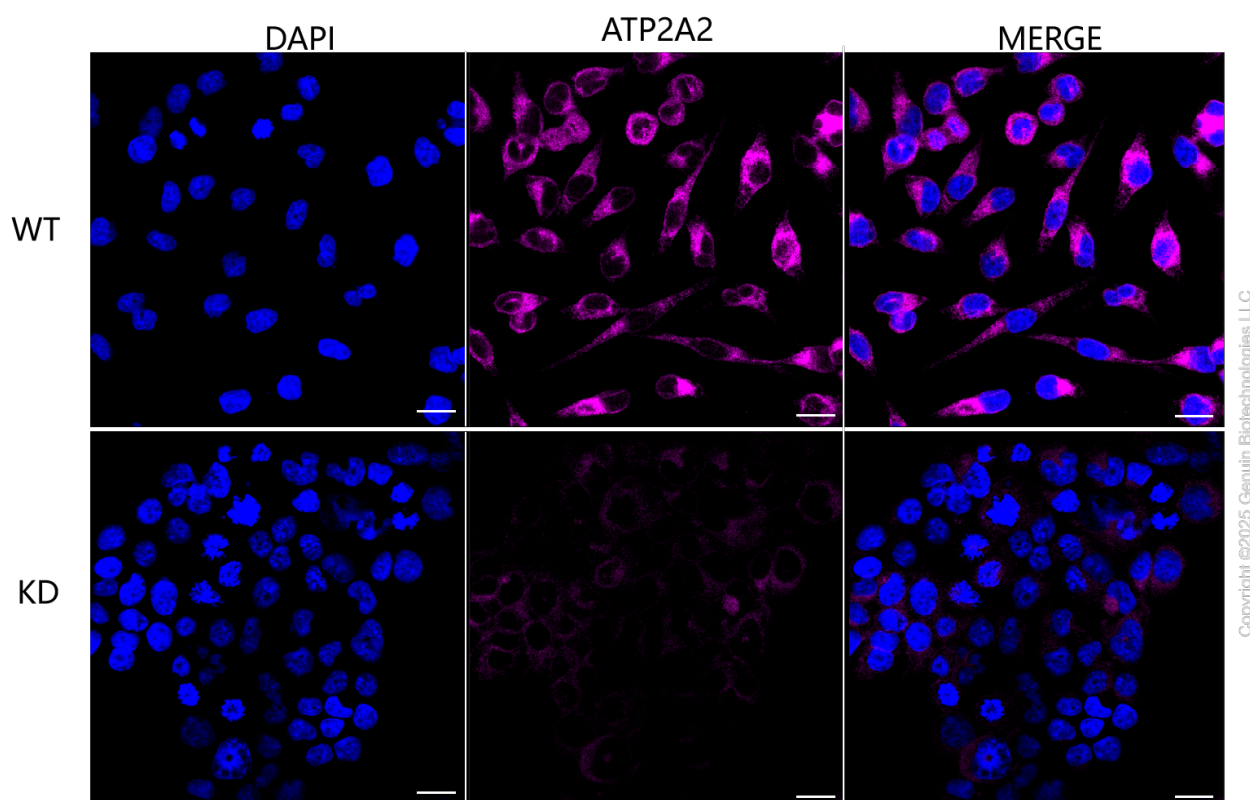
SUPPORT

SUPPORT@GENUINBIOTECH.COM
TEL: +1-540-855-7041

ORDERS

SALES@GENUINBIOTECH.COM
FAX: +1-540-855-7041

WWW.GENUINBIOTECH.COM



Immunocytochemical staining of HeLa cells using anti-ATP2A2 antibody (Cat#61393, 1:1,000), Top panel: wild-type (WT); Bottom panel: ATP2A2 shRNA knockdown (KD). Nuclei were stained blue with DAPI; ATP2A2 was stained magenta with Alexa Fluor® 647. Scale bar, 20 μ m. Permeabilization: Triton.