

# KD-Validated Anti-Aly/REF export factor Recombinant Rabbit Monoclonal Antibody



**Catalog #: 61394**

## Aliases

ALYREF; Aly/REF Export Factor; ALY; BEF; THO Complex Subunit 4; ALY/REF; THOC4; REF; Transcriptional Coactivator Aly/REF; BZIP-Enhancing Factor BEF; Ally Of AML-1 And LEF-1; THO Complex 4; Tho4; BZIP Enhancing Factor

## Background

Gene Name: ALYREF

NCBI Gene Entry: [10189](#)

UniProt Entry: [Q86V81](#)

## Application Information

Molecular Weight: Predicted, 27 kDa; observed, 27 kDa

Clonality: Rabbit monoclonal antibody

Clone ID: 25GB2425

Species Reactivity: Human, mouse, rat

Applications Tested: Western blotting (WB), flow cytometry (FCM), immunocytochemistry (IC)

## Immunogen

A synthesized peptide derived from human Aly

## Isotype

Rabbit IgG

## Storage Buffer

Supplied in PBS (pH 7.4) containing 50% glycerol, and 0.02% sodium azide.

## Storage

Store at -20 °C for one year.

## Recommended Dilutions

Western Blotting (WB): 1:2,000-1:10,000

Flow Cytometry (FCM): 1:2,000

Immunocytochemistry (IC): 1:100-1:1,000

**Note:** This product is for research use only.

---

### SUPPORT

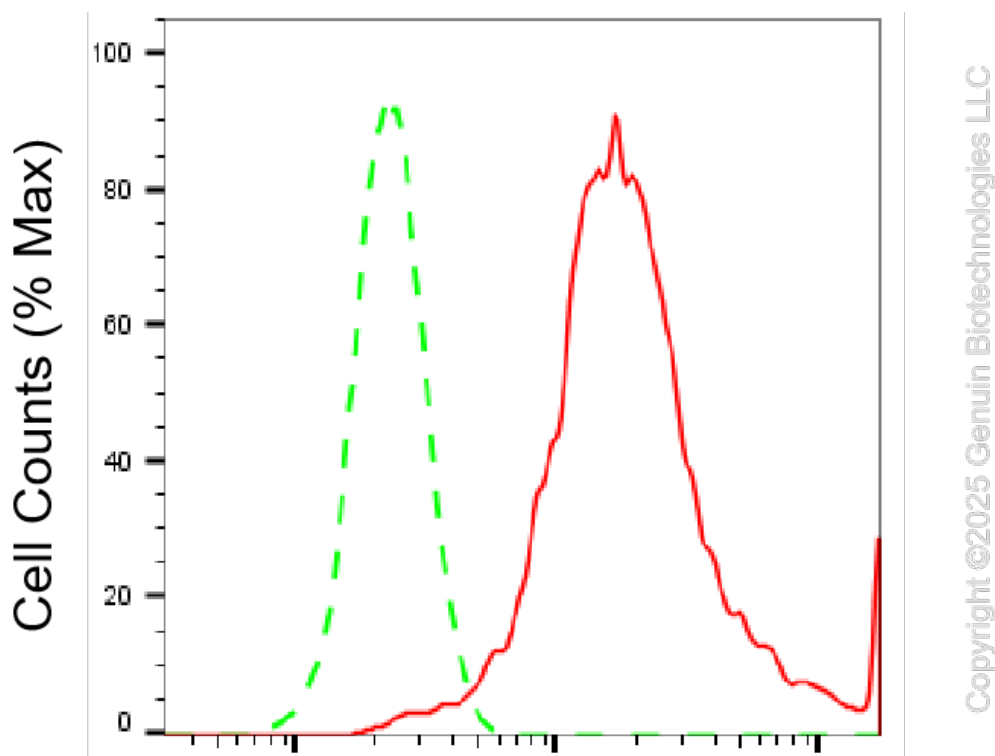
SUPPORT@GENUINBIOTECH.COM  
TEL: +1-540-855-7041

### ORDERS

SALES@GENUINBIOTECH.COM  
FAX: +1-540-855-7041

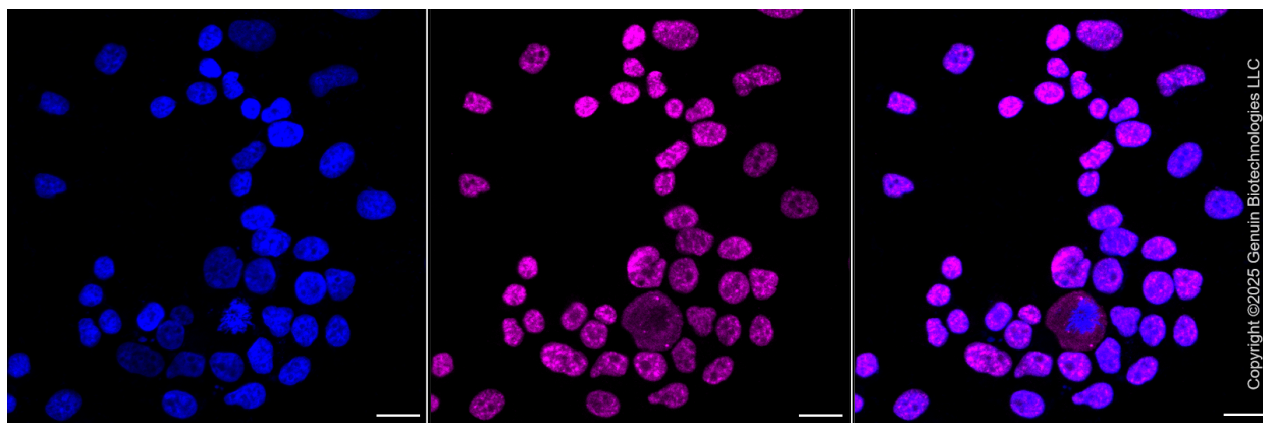
[WWW.GENUINBIOTECH.COM](http://WWW.GENUINBIOTECH.COM)

**Validation Data**



**Aly/REF export factor-Alexa Fluor® 647**

Flow cytometric analysis of Aly/REF export factor expression in HeLa cells using Aly/REF export factor antibody (Cat#61394, 1:2,000). Green, isotype control; red, Aly/REF export factor.



Immunocytochemical staining of HeLa cells with anti-Aly/REF export factor antibody (Cat#61394, 1:1,000). Nuclei were stained blue with DAPI; Aly/REF export factor was stained magenta with Alexa Fluor® 647. Images were taken using Leica stellaris 5. Protein abundance based on laser Intensity and smart gain: High. Scale bar, 20  $\mu$ m.

**SUPPORT**

SUPPORT@GENUINBIOTECH.COM  
TEL: +1-540-855-7041

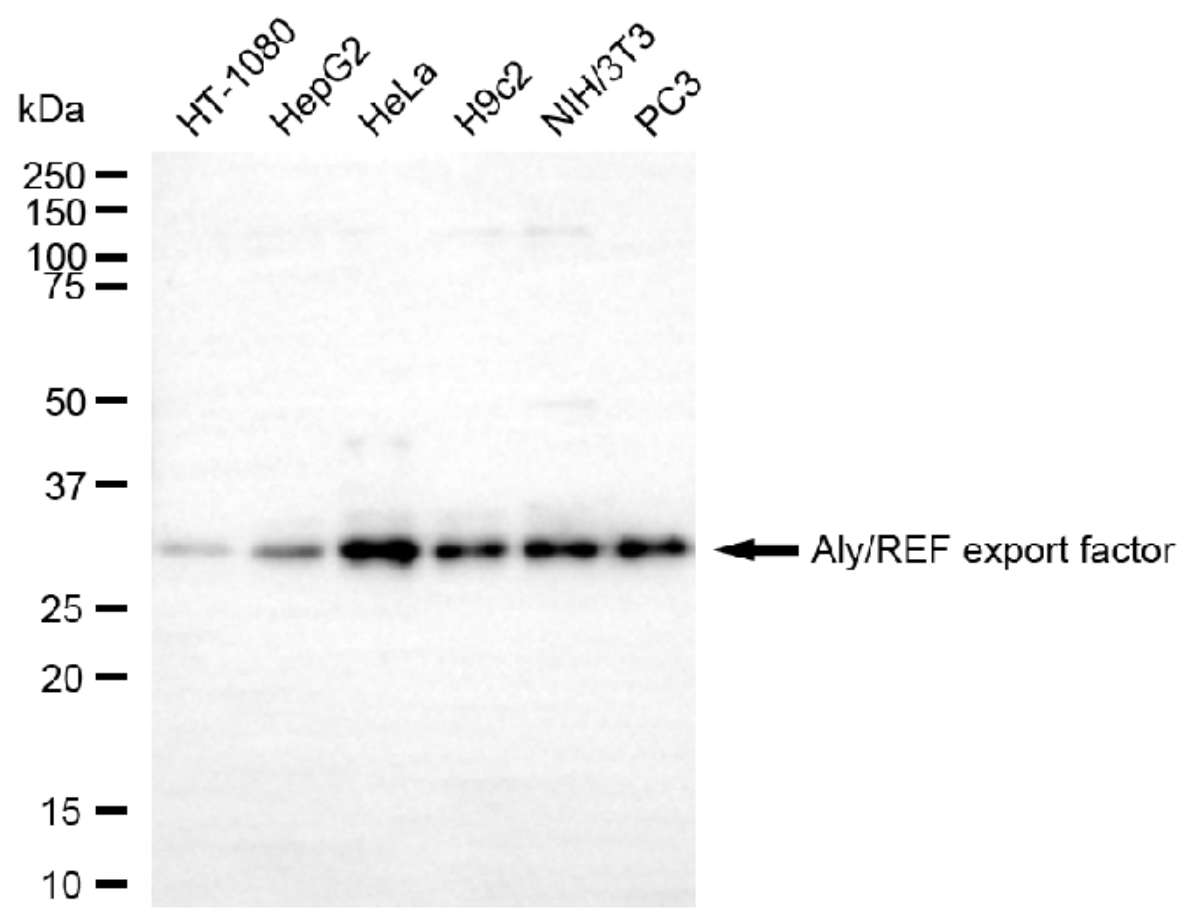
**ORDERS**

SALES@GENUINBIOTECH.COM  
FAX: +1-540-855-7041

**WWW.GENUINBIOTECH.COM**

## KD-Validated Anti-Aly/REF export factor Recombinant Rabbit Monoclonal Antibody

PAGE 3



Western blotting analysis using anti-Aly/REF export factor antibody (Cat#61394). Total cell lysates (20 µg) from various cell lines were loaded and separated by SDS-PAGE. The blot was incubated with anti-Aly/REF export factor antibody (Cat#61394, 1:10,000) and HRP-conjugated goat anti-rabbit secondary antibody (Cat#201, 1:20,000) respectively. Image was developed using NaQ™ ECL Substrate Kit (Cat#716).

### SUPPORT

SUPPORT@GENUINBIOTECH.COM  
TEL: +1-540-855-7041

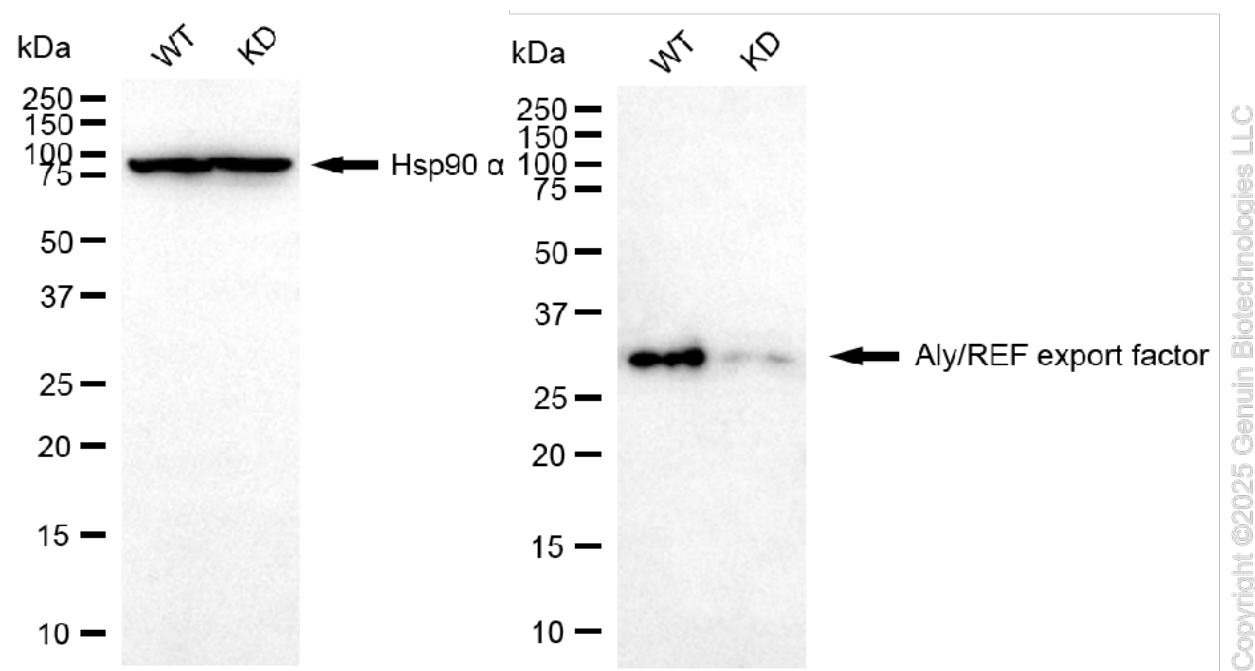
### ORDERS

SALES@GENUINBIOTECH.COM  
FAX: +1-540-855-7041

WWW.GENUINBIOTECH.COM

## KD-Validated Anti-Aly/REF export factor Recombinant Rabbit Monoclonal Antibody

PAGE 4



Western blotting analysis using anti-Aly/REF export factor antibody (Cat#61394). Aly/REF export factor expression in wild-type (WT) and Aly/REF export factor (ALYREF) knockdown (KD) HeLa cells with 25 µg of total cell lysates. Hsp90 α serves as a loading control. The blot was incubated with anti-Aly/REF export factor antibody (Cat#61394, 1:2,500) and HRP-conjugated goat anti-rabbit secondary antibody (Cat#201, 1:20,000) respectively. Image was developed using NaQ™ ECL Substrate Kit (Cat#716).

### SUPPORT

SUPPORT@GENUINBIOTECH.COM  
TEL: +1-540-855-7041

### ORDERS

SALES@GENUINBIOTECH.COM  
FAX: +1-540-855-7041

[WWW.GENUINBIOTECH.COM](http://WWW.GENUINBIOTECH.COM)