

KD-Validated Anti-Calpain 1 Recombinant Rabbit Monoclonal Antibody



Catalog #: 61396

Aliases

CAPN1; Calpain 1; CANPL1; MuCANP; CANP; Cell Proliferation-Inducing Gene 30 Protein; Calcium-Activated Neutral Proteinase 1; Calpain 1, (Mu/I) Large Subunit; Calpain-1 Catalytic Subunit; Calpain-1 Large Subunit; Micromolar-Calpain; Calpain Mu-Type; EC 3.4.22.52; CANP; MuCL; Cell Proliferation-Inducing Protein 30; Calpain, Large Polypeptide L1; EC 3.4.22; MUCANP; CANP1; SPG76; MUCL

Background

Gene Name: CAPN1

NCBI Gene Entry: [823](#)

UniProt Entry: [P07384](#)

Application Information

Molecular Weight: Predicted, 82 kDa, observed, 75 kDa

Clonality: Rabbit monoclonal antibody

Clone ID: 23GB3290

Species Reactivity: Human, mouse, rat

Applications Tested: Western blotting (WB), flow cytometry (FCM), immunocytochemistry (IC)

Immunogen

A synthesized peptide derived from human Calpain 1

Isotype

Rabbit IgG

Storage Buffer

Supplied in PBS (pH 7.4) containing 50% glycerol, and 0.02% sodium azide.

Storage

Store at -20 °C for one year.

Recommended Dilutions

Western Blotting (WB): 1:1,000-1:5,000

Flow Cytometry (FCM): 1:2,000

Immunocytochemistry (IC): 1:100-1:1,000

SUPPORT

SUPPORT@GENUINBIOTECH.COM
TEL: +1-540-855-7041

ORDERS

SALES@GENUINBIOTECH.COM
FAX: +1-540-855-7041

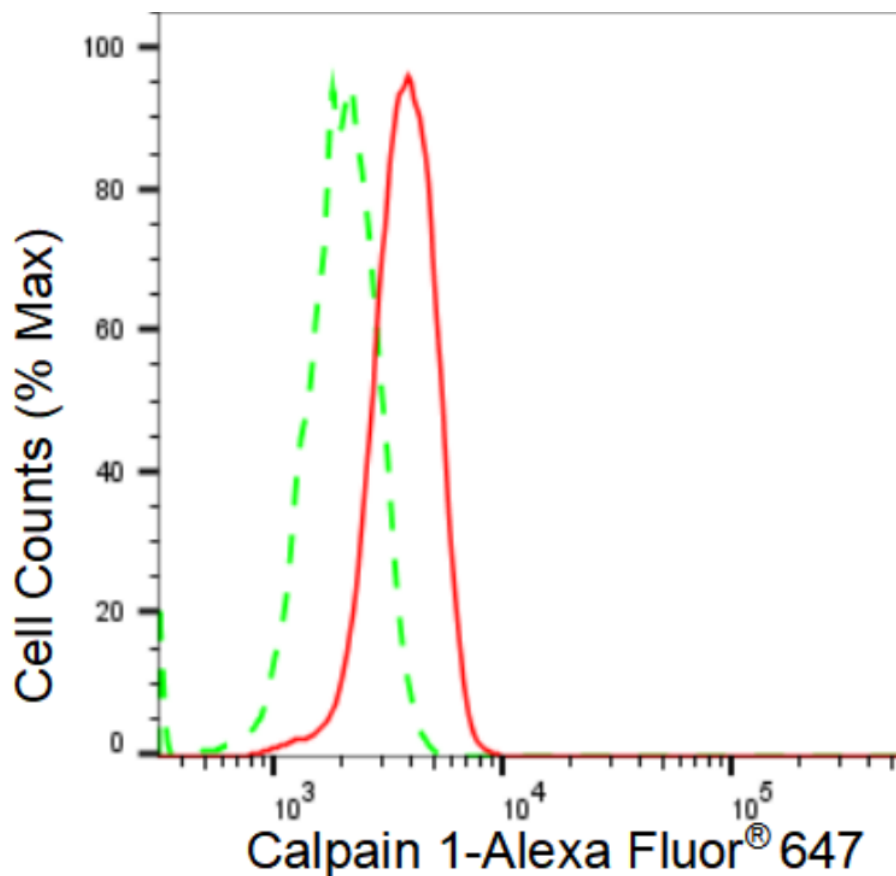
WWW.GENUINBIOTECH.COM

KD-Validated Anti-Calpain 1 Recombinant Rabbit Monoclonal Antibody

PAGE 2

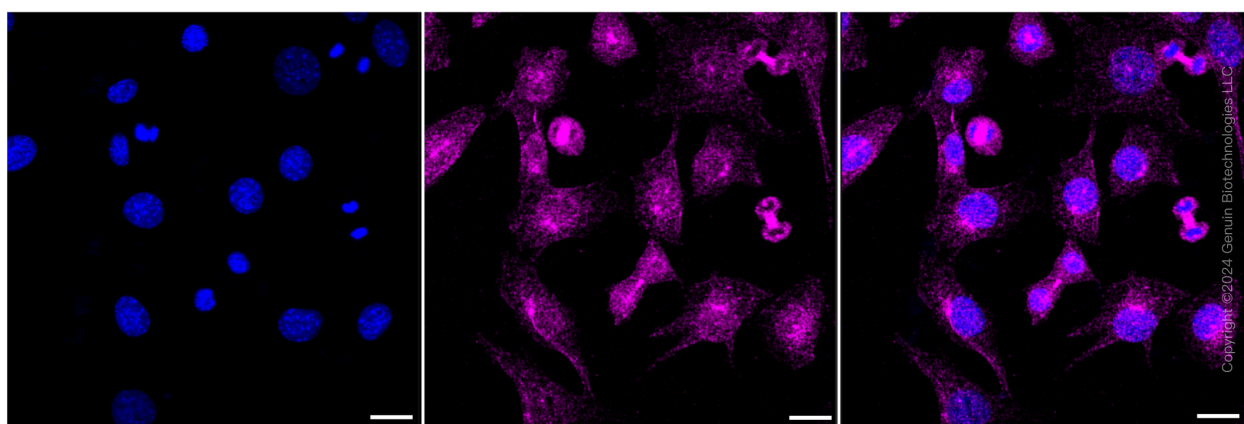
Note: This product is for research use only.

Validation Data



Copyright ©2024 Genuin Biotechnologies LLC

Flow cytometric analysis of Calpain 1 expression in C2C12 cells using Calpain 1 antibody (Cat#61396, 1:2,000). Green, isotype control; red, Calpain 1.



Copyright ©2024 Genuin Biotechnologies LLC

Immunocytochemical staining of C2C12 cells with Calpain 1 antibody (Cat#61396, 1:1,000). Nuclei were stained blue with DAPI; Calpain 1 was stained magenta with Alexa Fluor® 647. Images were taken using Leica stellaris 5. Protein abundance based on laser Intensity and smart

SUPPORT

SUPPORT@GENUINBIOTECH.COM
TEL: +1-540-855-7041

ORDERS

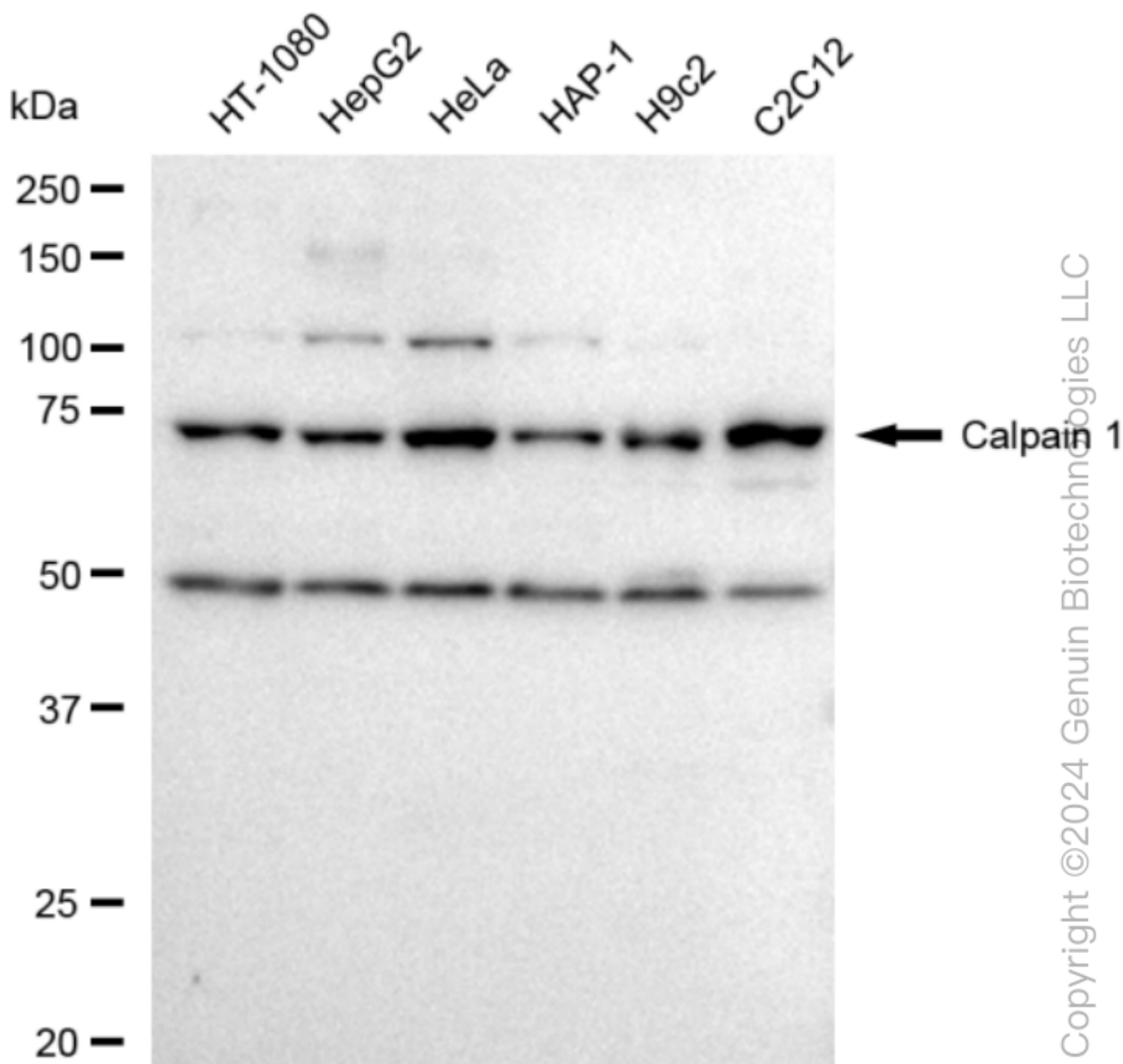
SALES@GENUINBIOTECH.COM
FAX: +1-540-855-7041

WWW.GENUINBIOTECH.COM

KD-Validated Anti-Calpain 1 Recombinant Rabbit Monoclonal Antibody

PAGE 3

gain: Medium. Scale bar: 20 μ m.



Western blotting analysis using anti-Calpain 1 antibody (Cat#61396). Total cell lysates (30 μ g) from various cell lines were loaded and separated by SDS-PAGE. The blot was incubated with anti-Calpain 1 antibody (Cat#61396, 1:5,000) and HRP-conjugated goat anti-rabbit secondary antibody (Cat#201, 1:20,000) respectively. Image was developed using FeQ™ ECL Substrate Kit (Cat#226).

SUPPORT

SUPPORT@GENUINBIOTECH.COM
TEL: +1-540-855-7041

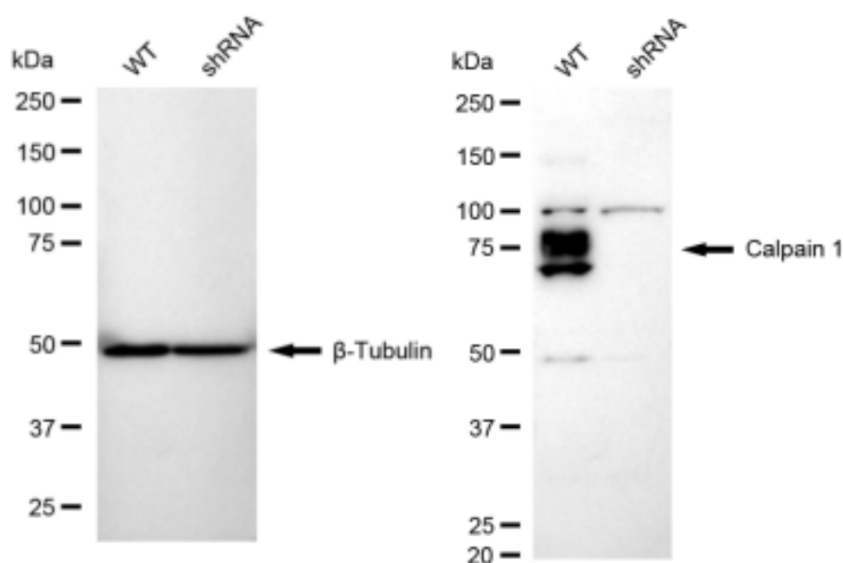
ORDERS

SALES@GENUINBIOTECH.COM
FAX: +1-540-855-7041

WWW.GENUINBIOTECH.COM

KD-Validated Anti-Calpain 1 Recombinant Rabbit Monoclonal Antibody

PAGE 4



Copyright ©2024 Genuin Biotechnologies LLC

Western blotting analysis using anti-Calpain 1 antibody (Cat#61396). Calpain 1 expression in wild type (WT) and Calpain 1 shRNA knockdown (KD) HeLa cells with 30 μ g of total cell lysates. β -Tubulin serves as a loading control. The blot was incubated with anti-Calpain 1 antibody (Cat#61396, 1:5,000) and HRP-conjugated goat anti-rabbit secondary antibody (Cat#201, 1:20,000) respectively. Image was developed using FeQ™ ECL Substrate Kit (Cat#226).

SUPPORT

SUPPORT@GENUINBIOTECH.COM
TEL: +1-540-855-7041

ORDERS

SALES@GENUINBIOTECH.COM
FAX: +1-540-855-7041

WWW.GENUINBIOTECH.COM