

# KD-Validated Anti-GALT Recombinant Rabbit Monoclonal Antibody



**Catalog #: 61397**

## Aliases

GALT; Galactose-1-Phosphate Uridyltransferase; UDP-Glucose--Hexose-1-Phosphate Uridyltransferase; Gal-1-P Uridyltransferase; Galactose-1-Phosphate Uridyl Transferase; EC 2.7.7.12

## Background

Gene Name: GALT

NCBI Gene Entry: [2592](#)

UniProt Entry: [P07902](#)

## Application Information

Molecular Weight: Predicted, 43 kDa; observed, 43 kDa

Clonality: Rabbit monoclonal antibody

Clone ID: 25GB2435

Species Reactivity: Human, mouse, rat

Applications Tested: Western blotting (WB), flow cytometry (FCM), immunocytochemistry (IC)

## Immunogen

A synthesized peptide derived from human GALT

## Isotype

Rabbit IgG

## Storage Buffer

Supplied in PBS (pH 7.4) containing 50% glycerol, and 0.02% sodium azide.

## Storage

Store at -20 °C for one year.

## Recommended Dilutions

Western blotting (WB): 1:1,000-1:5,000

Flow Cytometry (FCM): 1:2,000

Immunocytochemistry (IC): 1:100-1:1,000

**Note:** This product is for research use only.

---

### SUPPORT

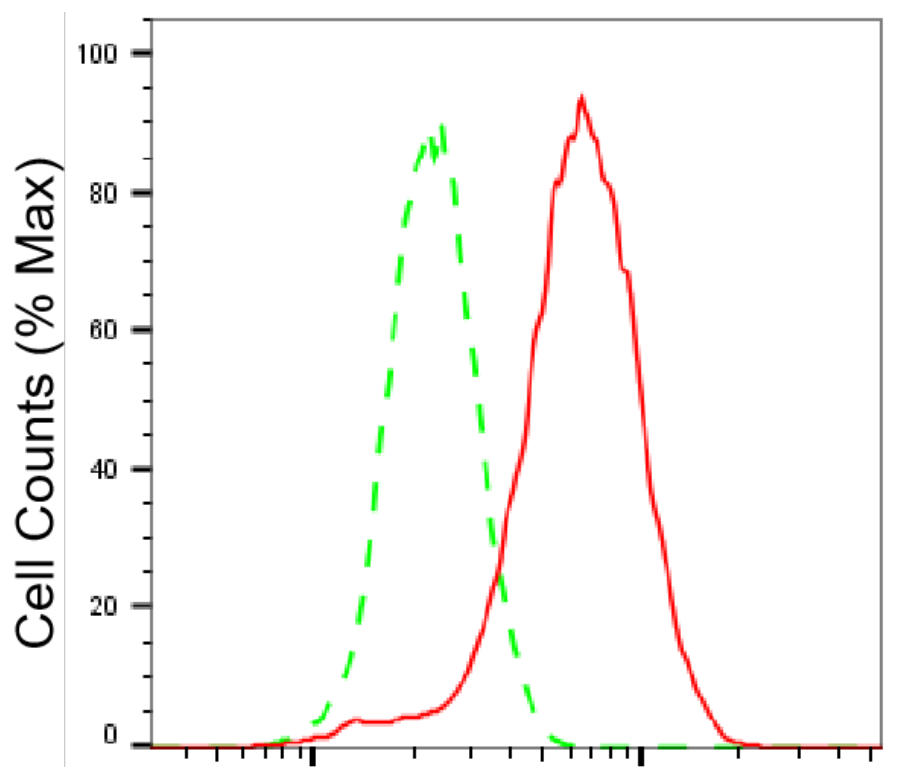
SUPPORT@GENUINBIOTECH.COM  
TEL: +1-540-855-7041

### ORDERS

SALES@GENUINBIOTECH.COM  
FAX: +1-540-855-7041

[WWW.GENUINBIOTECH.COM](http://WWW.GENUINBIOTECH.COM)

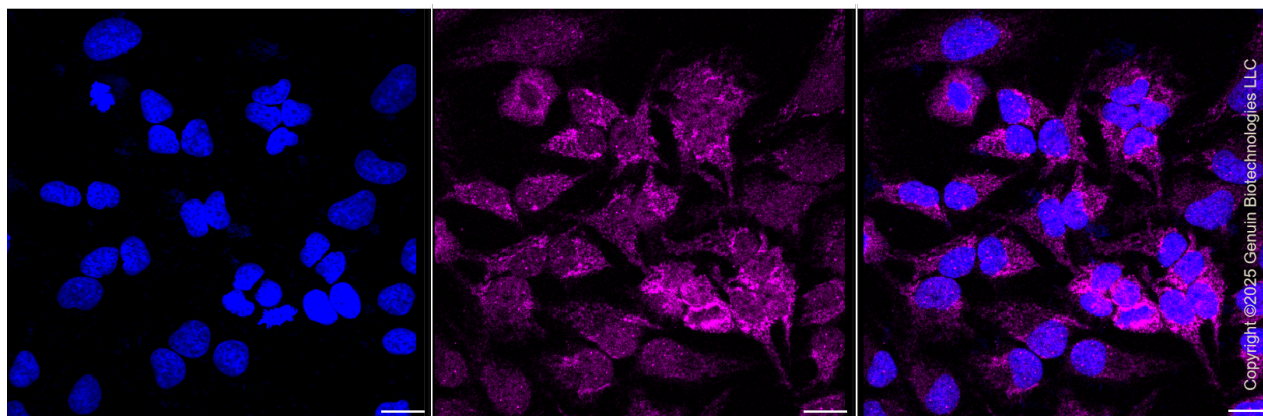
**Validation Data**



Copyright ©2025 Genuin Biotechnologies LLC

**GALT-Alexa Fluor® 647**

Flow cytometric analysis of GALT expression in HeLa cells using GALT antibody (Cat#61397, 1:2,000). Green, isotype control; red, GALT.



Copyright ©2025 Genuin Biotechnologies LLC

Immunocytochemical staining of HeLa cells with anti-GALT antibody (Cat#61397, 1:1,000). Nuclei were stained blue with DAPI; GALT was stained magenta with Alexa Fluor® 647. Images were taken using Leica stellaris 5. Protein abundance based on laser Intensity and smart gain: Low. Scale bar, 20 µm.

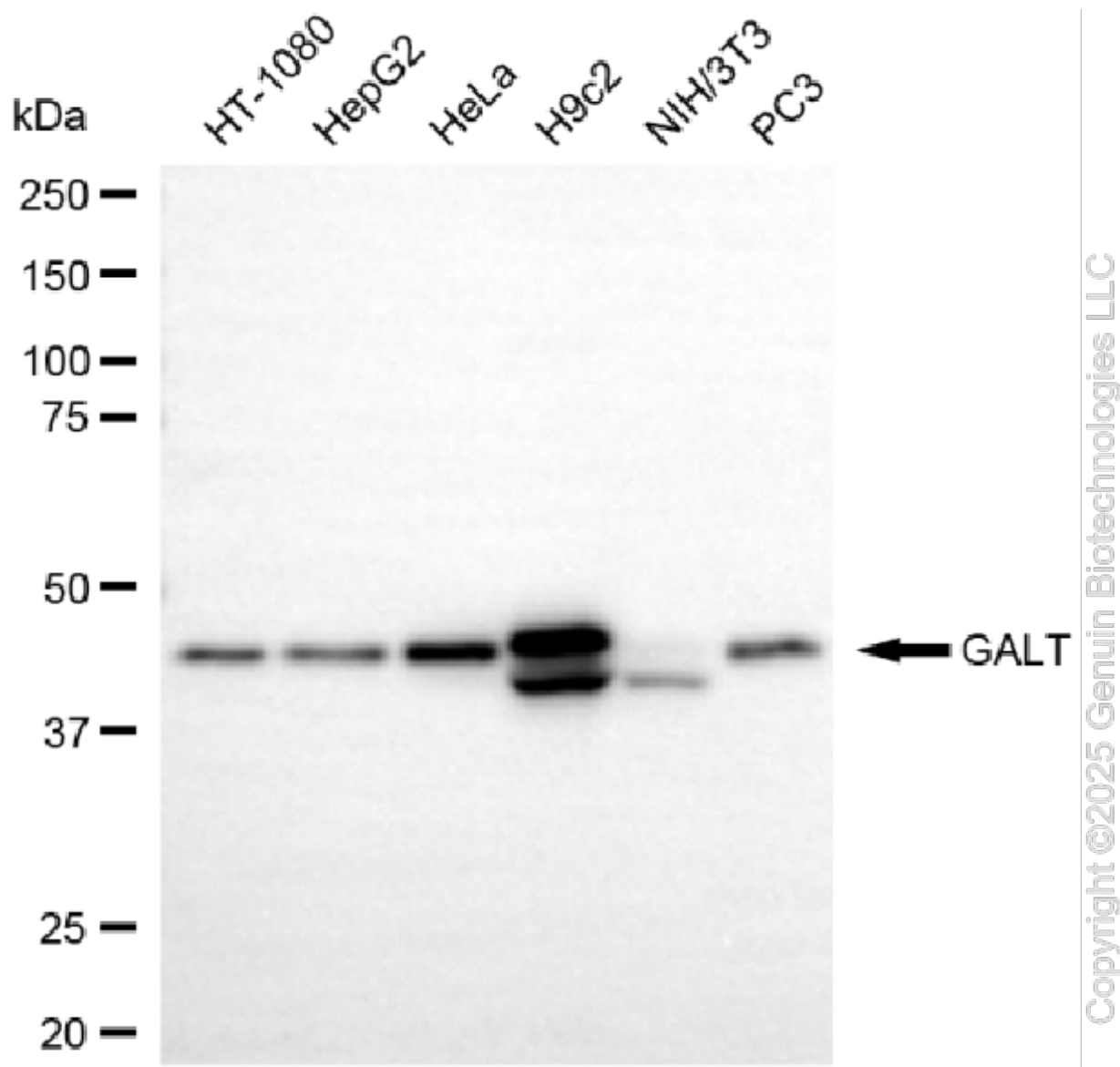
**SUPPORT**

SUPPORT@GENUINBIOTECH.COM  
TEL: +1-540-855-7041

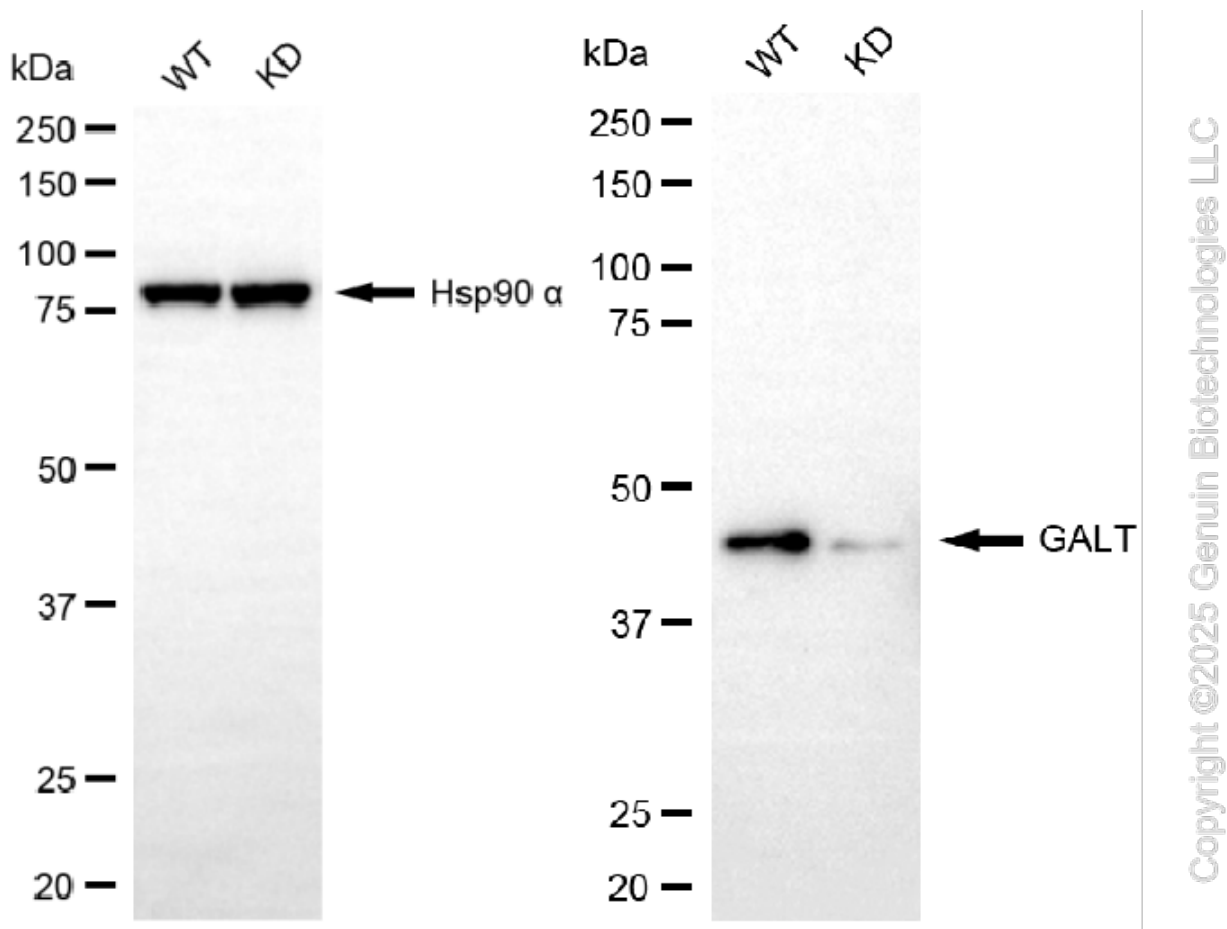
**ORDERS**

SALES@GENUINBIOTECH.COM  
FAX: +1-540-855-7041

**WWW.GENUINBIOTECH.COM**



Western blotting analysis using anti-GALT antibody (Cat#61397). Total cell lysates (30  $\mu$ g) from various cell lines were loaded and separated by SDS-PAGE. The blot was incubated with anti-GALT antibody (Cat#61397, 1:5,000) and HRP-conjugated goat anti-rabbit secondary antibody (Cat#201, 1:20,000) respectively. Image was developed using FeQ<sup>TM</sup> ECL Substrate Kit (Cat#226).



Western blotting analysis using anti-GALT antibody (Cat#61397). GALT expression in wild-type (WT) and GALT knockdown (KD) HeLa cells with 30 µg of total cell lysates. Hsp90 α serves as a loading control. The blot was incubated with anti-GALT antibody (Cat#61397, 1:5,000) and HRP-conjugated goat anti-rabbit secondary antibody (Cat#201, 1:20,000) respectively. Image was developed using NaQ™ ECL Substrate Kit (Cat#716).