

# KD-Validated Anti-Dihydrofolate reductase Recombinant Rabbit Monoclonal Antibody



**Catalog #: 61398**

## Aliases

DHFR; Dihydrofolate Reductase; DHFR1; EC 1.5.1.3; DHFRP1; DYR

## Background

Gene Name: DHFR

NCBI Gene Entry: [1719](#)

UniProt Entry: [P00374](#)

## Application Information

Molecular Weight: Predicted, 21 kDa, observed, 18 kDa

Clonality: Rabbit monoclonal antibody

Clone ID: 23GB3575

Species Reactivity: Human, mouse, rat

Applications Tested: Western blotting (WB), flow cytometry (FCM), immunocytochemistry (IC)

## Immunogen

A synthesized peptide derived from human DHFR

## Isotype

Rabbit IgG

## Storage Buffer

Supplied in PBS (pH 7.4) containing 50% glycerol, and 0.02% sodium azide.

## Storage

Store at -20 °C for one year.

## Recommended Dilutions

Western Blotting (WB): 1:1,000-1:5,000

Flow Cytometry (FCM): 1:2,000

Immunocytochemistry (IC): 1:100-1:1,000

**Note:** This product is for research use only.

## Validation Data

---

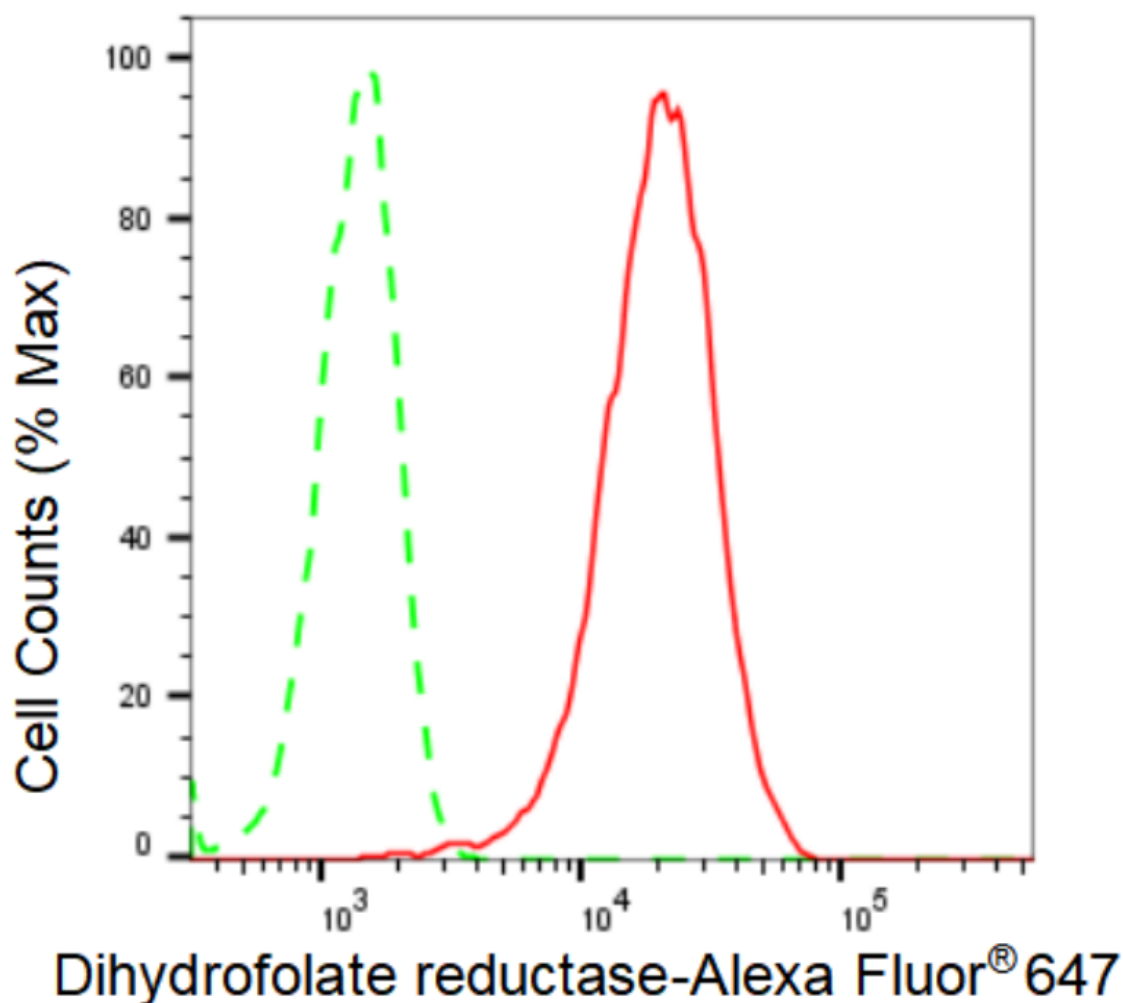
### SUPPORT

SUPPORT@GENUINBIOTECH.COM  
TEL: +1-540-855-7041

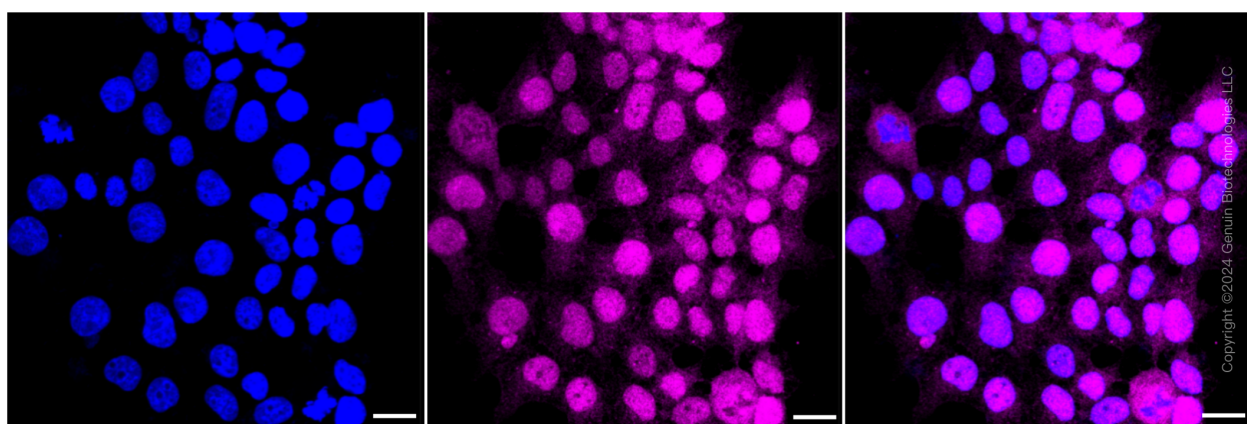
### ORDERS

SALES@GENUINBIOTECH.COM  
FAX: +1-540-855-7041

[WWW.GENUINBIOTECH.COM](http://WWW.GENUINBIOTECH.COM)



Flow cytometric analysis of Dihydrofolate reductase expression in HeLa cells using Dihydrofolate reductase antibody (Cat#61398, 1:2,000). Green, isotype control; red, Dihydrofolate reductase.

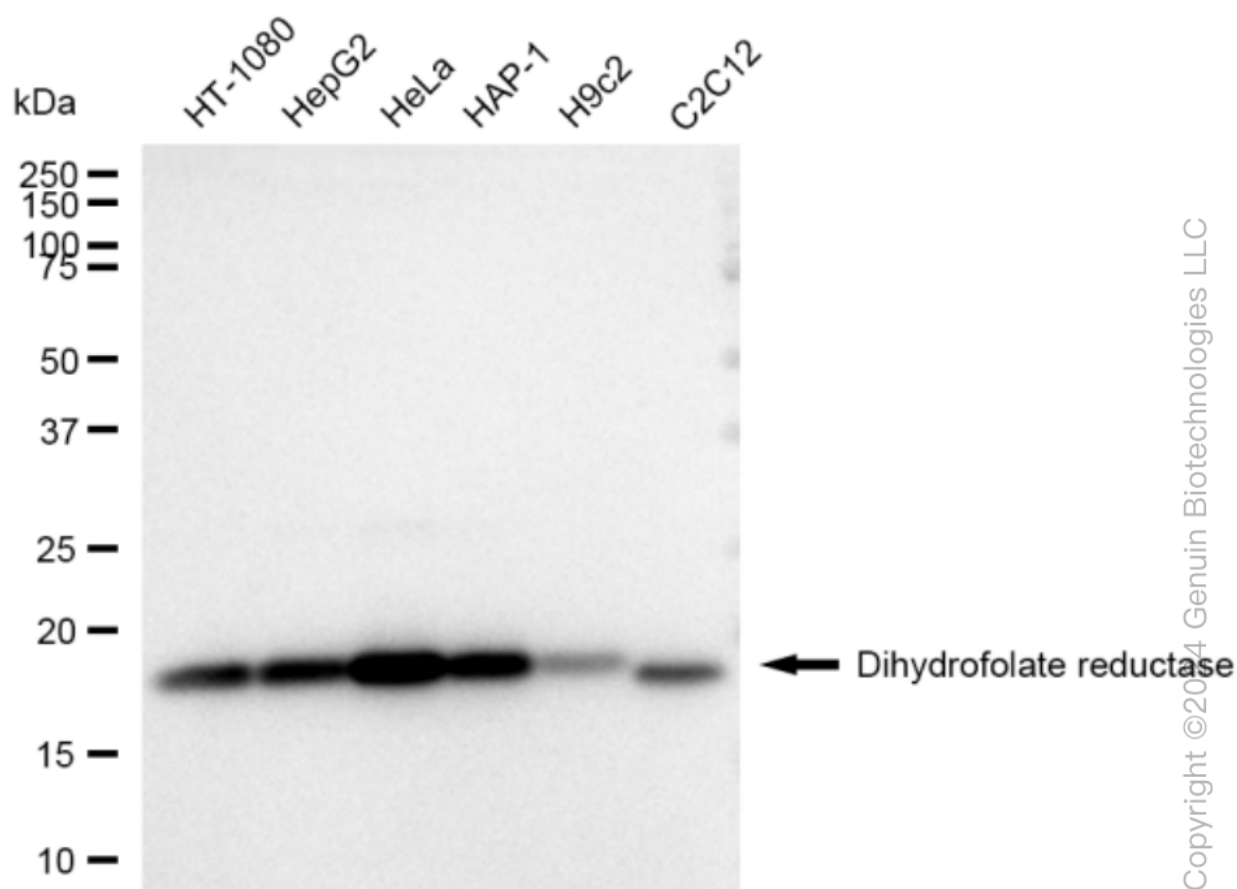


Immunocytochemical staining of HeLa cells with Dihydrofolate reductase antibody (Cat#61398, 1:1,000). Nuclei were stained blue with DAPI; Dihydrofolate reductase was stained magenta with

## KD-Validated Anti-Dihydrofolate reductase Recombinant Rabbit Monoclonal Antibody

PAGE 3

Alexa Fluor® 647. Images were taken using Leica stellaris 5. Protein abundance based on laser Intensity and smart gain: Medium. Scale bar: 20  $\mu$ m.



Western blotting analysis using anti-Dihydrofolate reductase antibody (Cat#61398). Total cell lysates (30  $\mu$ g) from various cell lines were loaded and separated by SDS-PAGE. The blot was incubated with anti-Dihydrofolate reductase antibody (Cat#61398, 1:5,000) and HRP-conjugated goat anti-rabbit secondary antibody (Cat#201, 1:20,000) respectively. Image was developed using FeQ™ ECL Substrate Kit (Cat#226).

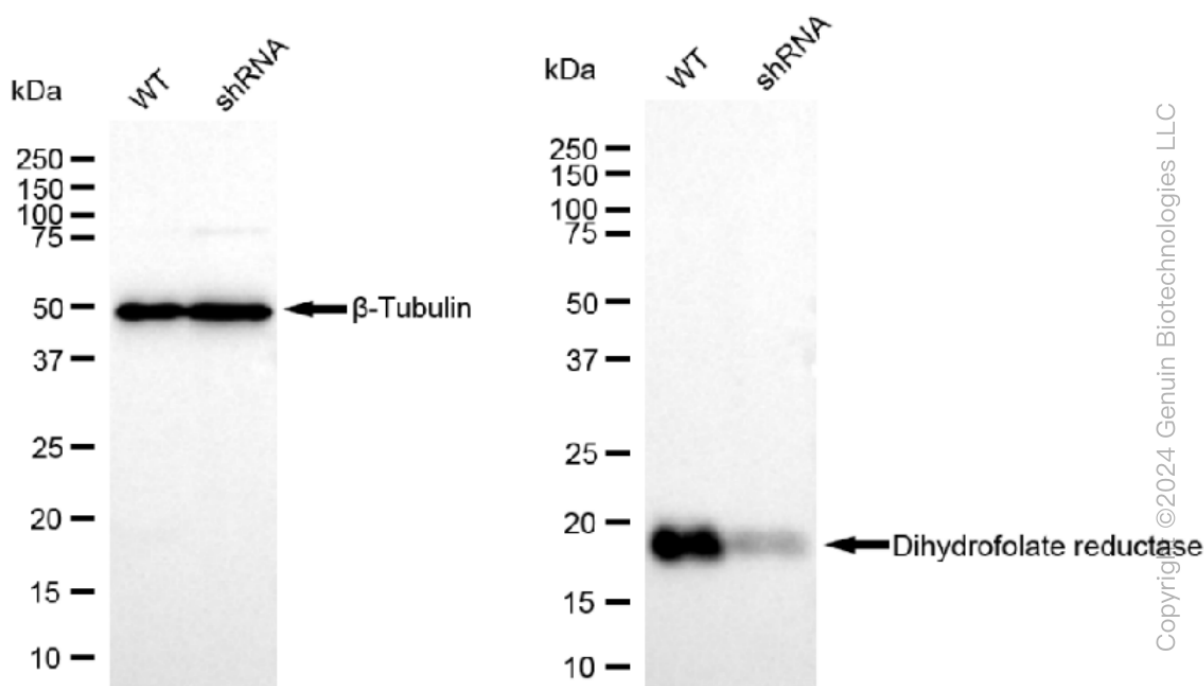
### SUPPORT

SUPPORT@GENUINBIOTECH.COM  
TEL: +1-540-855-7041

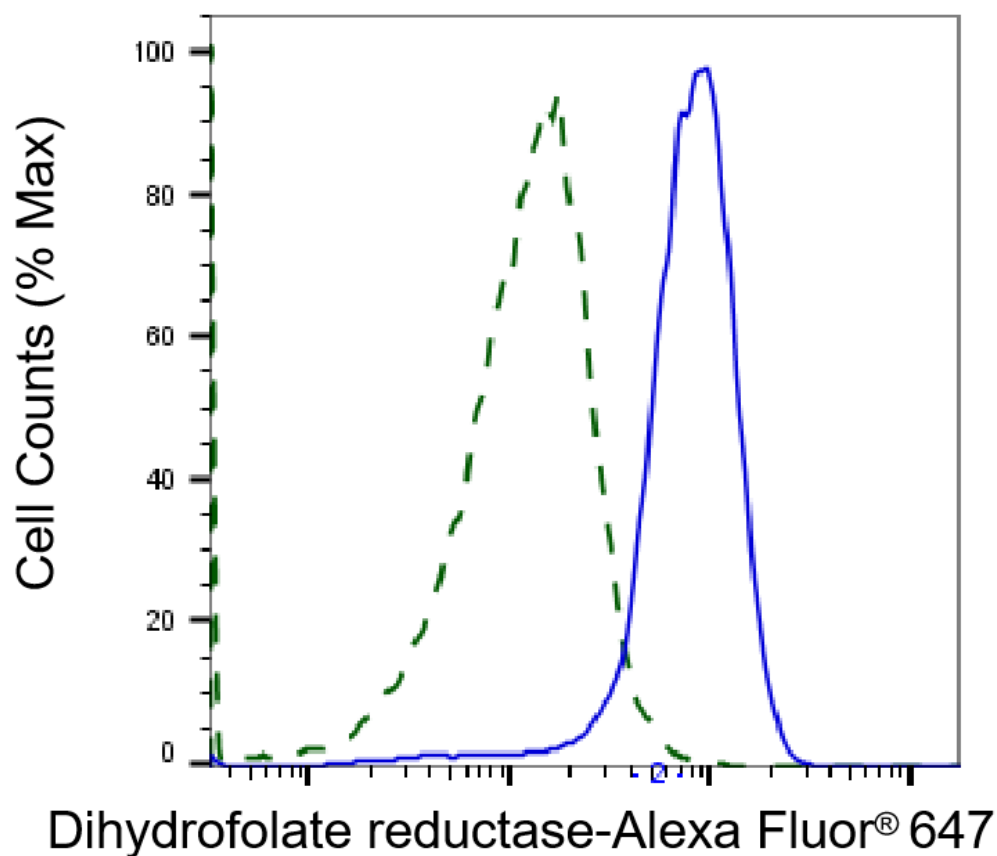
### ORDERS

SALES@GENUINBIOTECH.COM  
FAX: +1-540-855-7041

WWW.GENUINBIOTECH.COM



Western blotting analysis using anti-Dihydrofolate reductase antibody (Cat#61398). Dihydrofolate reductase expression in wild type (WT) and Dihydrofolate reductase shRNA knockdown (KD) HeLa cells with 30 µg of total cell lysates. β-Tubulin serves as a loading control. The blot was incubated with anti-Dihydrofolate reductase antibody (Cat#61398, 1:5,000) and HRP-conjugated goat anti-rabbit secondary antibody (Cat#201, 1:20,000) respectively. Image was developed using FeQ™ ECL Substrate Kit (Cat#226).



Validation of Dihydrofolate reductase knockdown using flow cytometry. Wild-type(WT, Blue) and knockdown(KD, Green) HeLa cells were stained with anti-Dihydrofolate reductase antibody (Cat#61398, 1:2,000) and analyzed using BD flow cytometer.