

KD-Validated Anti-FRG1 Recombinant Rabbit Monoclonal Antibody



Catalog #: 61401

Aliases

FRG1; FSHD Region Gene 1; FRG1A; FSG1; FSHD Region Gene 1 Protein; Protein FRG1; Facioscapulohumeral Muscular Dystrophy Region Gene-1

Background

Gene Name: FRG1

NCBI Gene Entry: [2483](#)

UniProt Entry: [Q14331](#)

Application Information

Molecular Weight: Predicted, 29 kDa; observed, 29 kDa

Clonality: Rabbit monoclonal antibody

Clone ID: 25GB2440

Species Reactivity: Human, mouse

Applications Tested: Western blotting (WB), flow cytometry (FCM), immunocytochemistry (IC)

Immunogen

A synthesized peptide derived from human FRG1

Isotype

Rabbit IgG

Storage Buffer

Supplied in PBS (pH 7.4) containing 50% glycerol, and 0.02% sodium azide.

Storage

Store at -20 °C for one year.

Recommended Dilutions

Western blotting (WB): 1:1,000-1:5,000

Flow Cytometry (FCM): 1:2,000

Immunocytochemistry (IC): 1:100-1:1,000

Note: This product is for research use only.

Validation Data

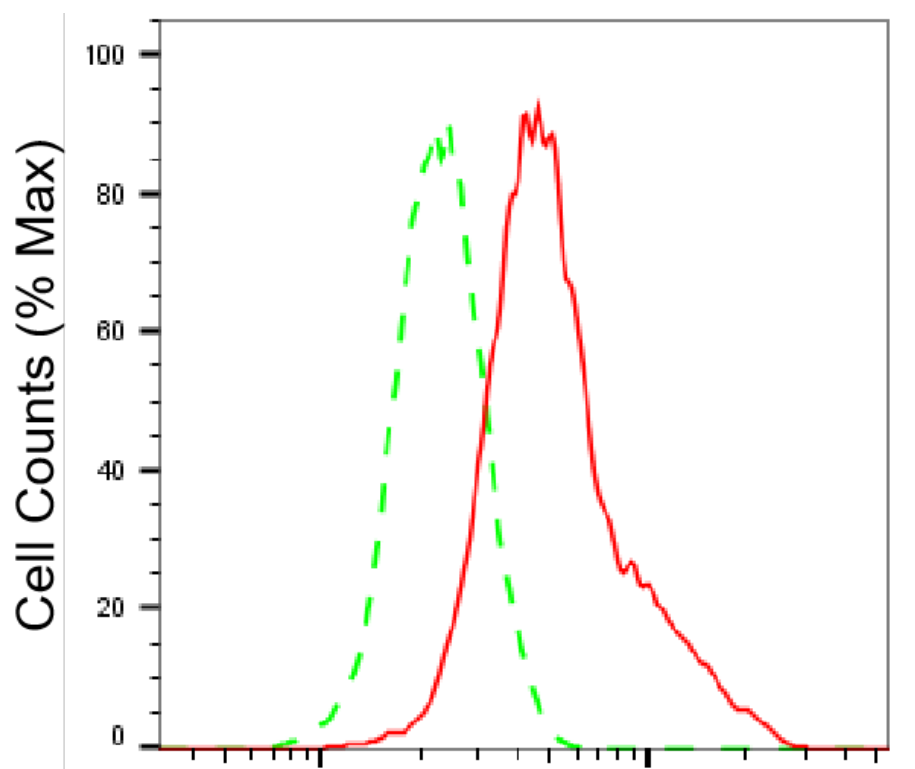
SUPPORT

SUPPORT@GENUINBIOTECH.COM
TEL: +1-540-855-7041

ORDERS

SALES@GENUINBIOTECH.COM
FAX: +1-540-855-7041

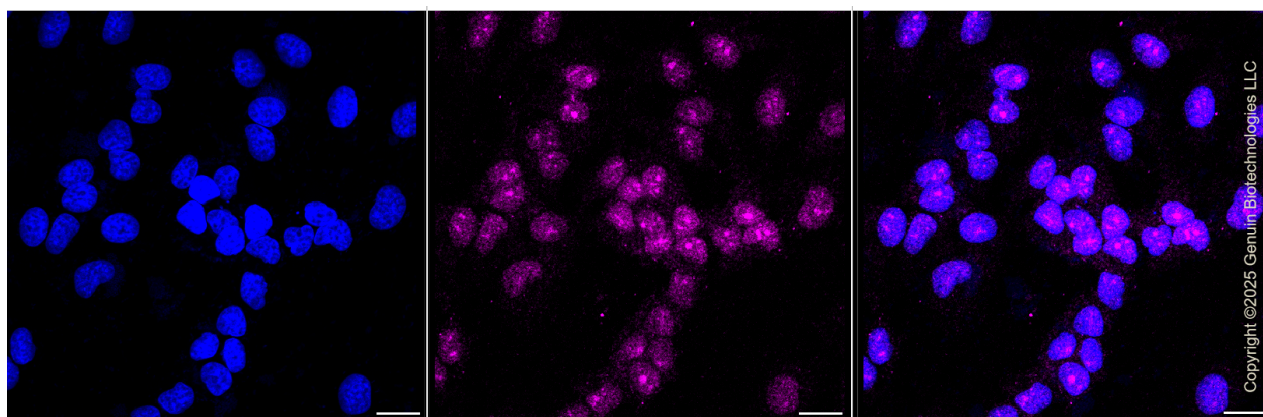
WWW.GENUINBIOTECH.COM



Copyright ©2025 Genuin Biotechnologies LLC

FRG1-Alexa Fluor® 647

Flow cytometric analysis of FRG1 expression in HeLa cells using FRG1 antibody (Cat#61401, 1:2,000). Green, isotype control; red, FRG1.



Copyright ©2025 Genuin Biotechnologies LLC

Immunocytochemical staining of HeLa cells with anti-FRG1 antibody (Cat#61401, 1:1000). Nuclei were stained blue with DAPI; FRG1 was stained magenta with Alexa Fluor® 647. Images were taken using Leica stellaris 5. Protein abundance based on laser Intensity and smart gain: Low. Scale bar, 20 µm.

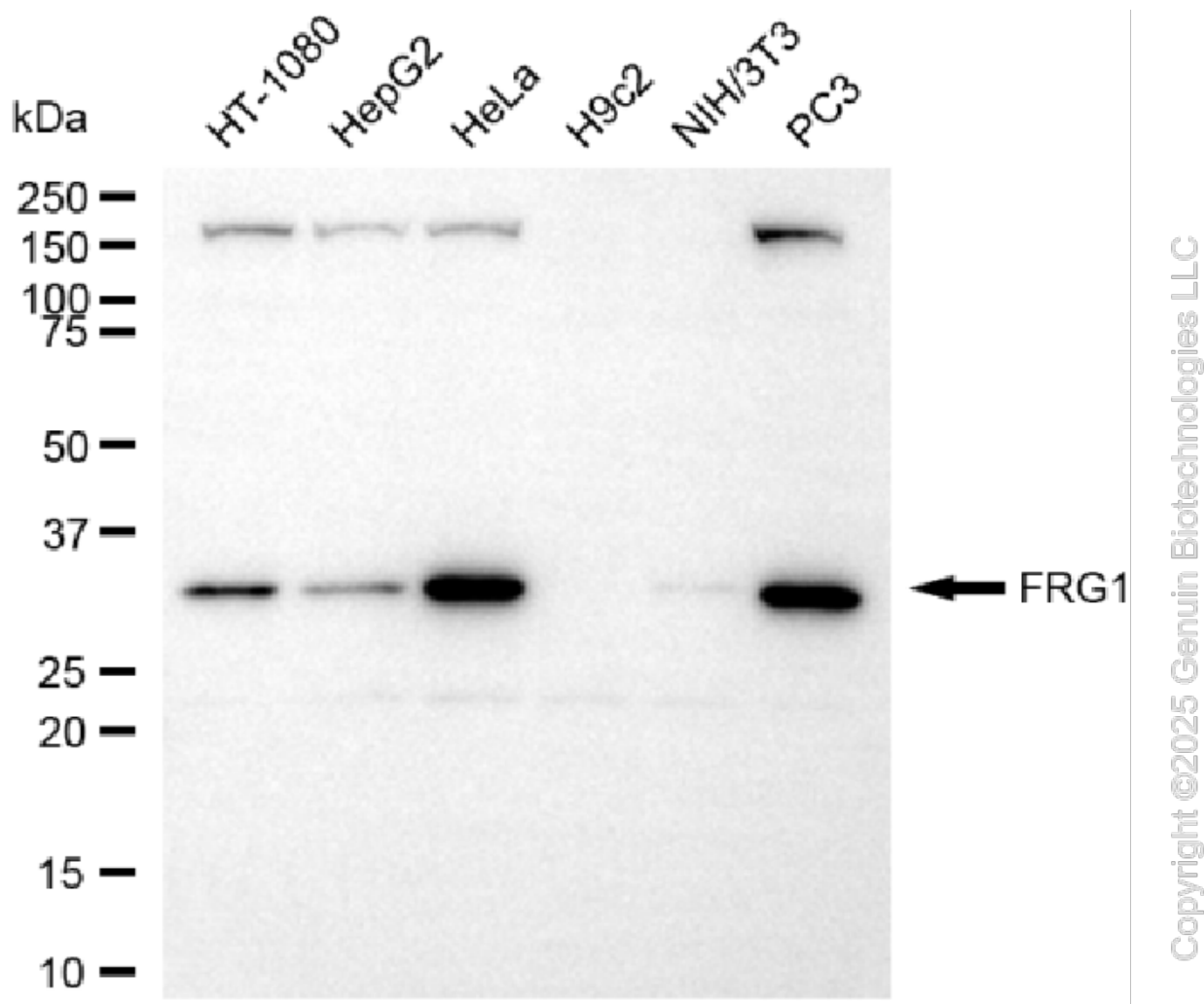
SUPPORT

SUPPORT@GENUINBIOTECH.COM
TEL: +1-540-855-7041

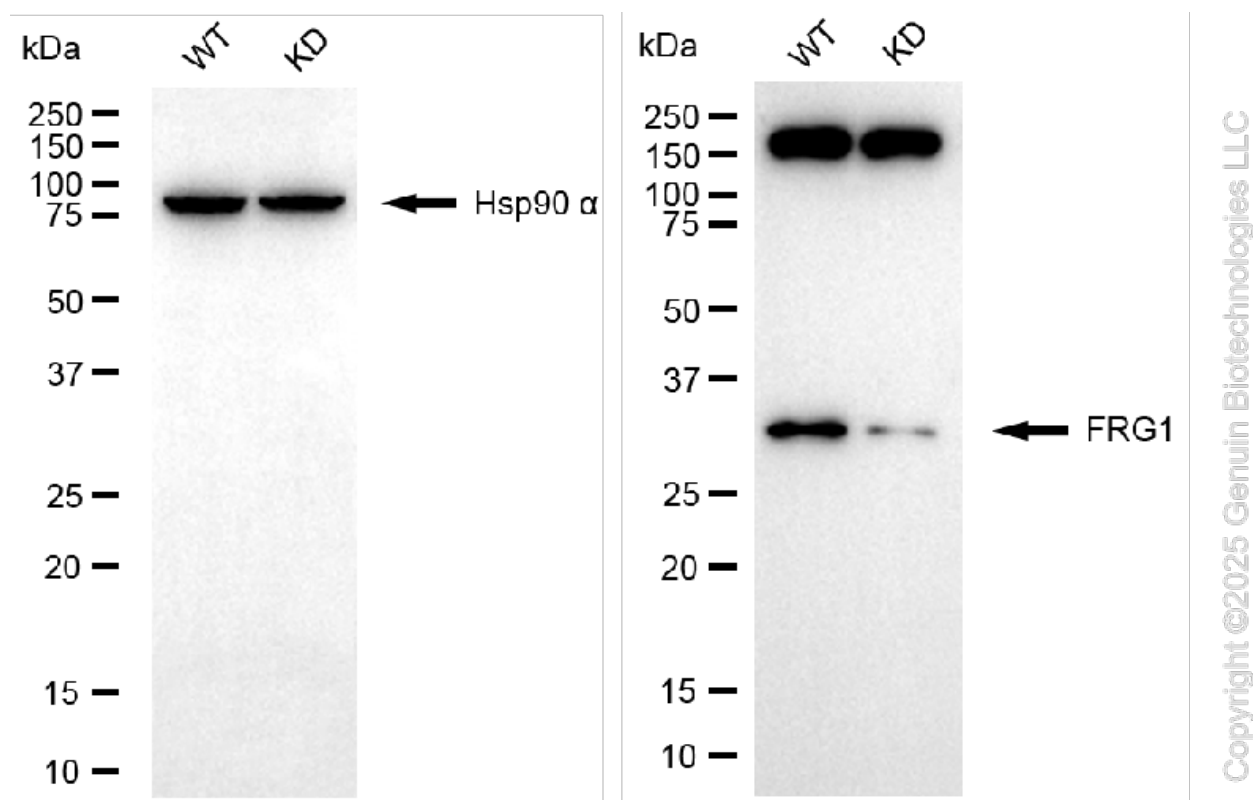
ORDERS

SALES@GENUINBIOTECH.COM
FAX: +1-540-855-7041

WWW.GENUINBIOTECH.COM



Western blotting analysis using anti-FRG1 antibody (Cat#61401). Total cell lysates (30 µg) from various cell lines were loaded and separated by SDS-PAGE. The blot was incubated with anti-FRG1 antibody (Cat#61401, 1:5,000) and HRP-conjugated goat anti-rabbit secondary antibody (Cat#201, 1:20,000) respectively. Image was developed using FeQ™ ECL Substrate Kit (Cat#226).



Western blotting analysis using anti-FRG1 antibody (Cat#61401). FRG1 expression in wild-type (WT) and FRG1 knockdown (KD) HSHC cells with 20 µg of total cell lysates. Hsp90 α serves as a loading control. The blot was incubated with anti-FRG1 antibody (Cat#61401, 1:5,000) and HRP-conjugated goat anti-rabbit secondary antibody (Cat#201, 1:20,000) respectively. Image was developed using NaQ™ ECL Substrate Kit (Cat#716).