

KD-Validated Anti-Calmegin Recombinant Rabbit Monoclonal Antibody



Catalog #: 61406

Aliases

CLGN; Calmegin; Testis Tissue Sperm-Binding Protein Li 79P

Background

Gene Name: CLGN

NCBI Gene Entry: [1047](#)

UniProt Entry: [O14967](#)

Application Information

Molecular Weight: Predicted, 70 kDa, observed, 80 kDa

Clonality: Rabbit monoclonal antibody

Clone ID: 23GB3280

Species Reactivity: Human

Applications Tested: Western blotting (WB), immunocytochemistry (IC)

Immunogen

A synthesized peptide derived from human Calmegin

Isotype

Rabbit IgG

Storage Buffer

Supplied in PBS (pH 7.4) containing 50% glycerol, and 0.02% sodium azide.

Storage

Store at -20 °C for one year.

Recommended Dilutions

Western Blotting (WB): 1:1,000-1:5,000

Immunocytochemistry (IC): 1:100-1:1,000

Note: This product is for research use only.

Validation Data

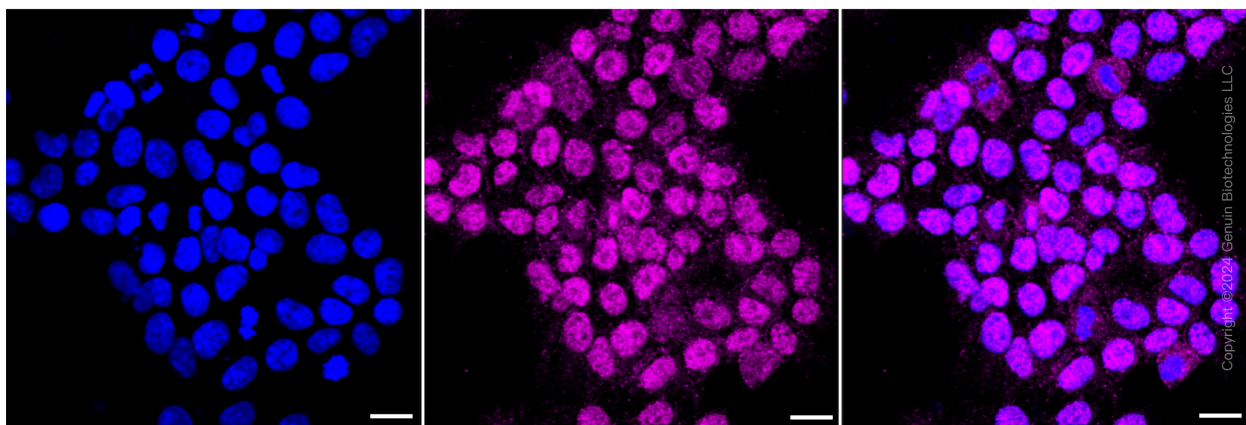
SUPPORT

SUPPORT@GENUINBIOTECH.COM
TEL: +1-540-855-7041

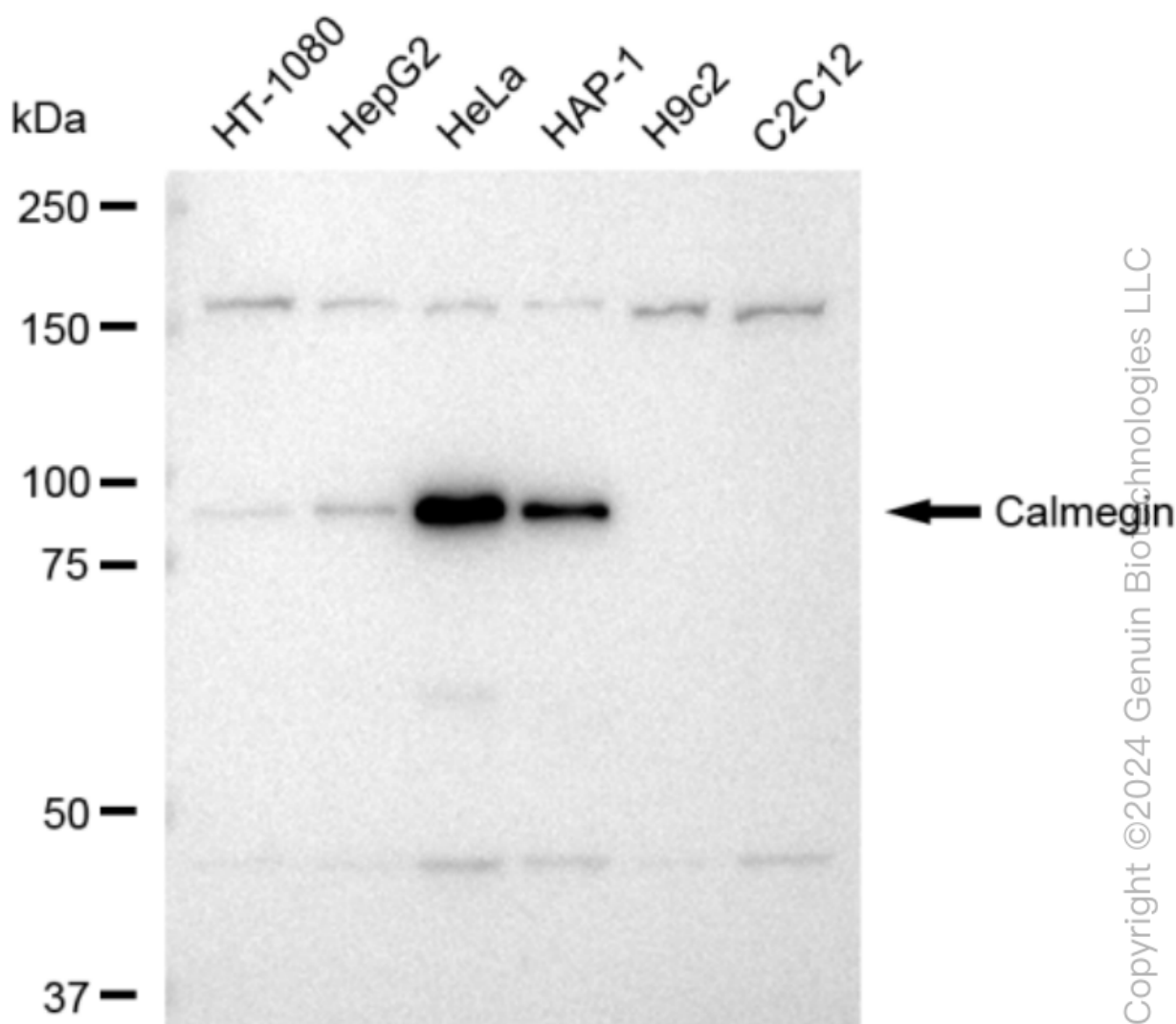
ORDERS

SALES@GENUINBIOTECH.COM
FAX: +1-540-855-7041

WWW.GENUINBIOTECH.COM



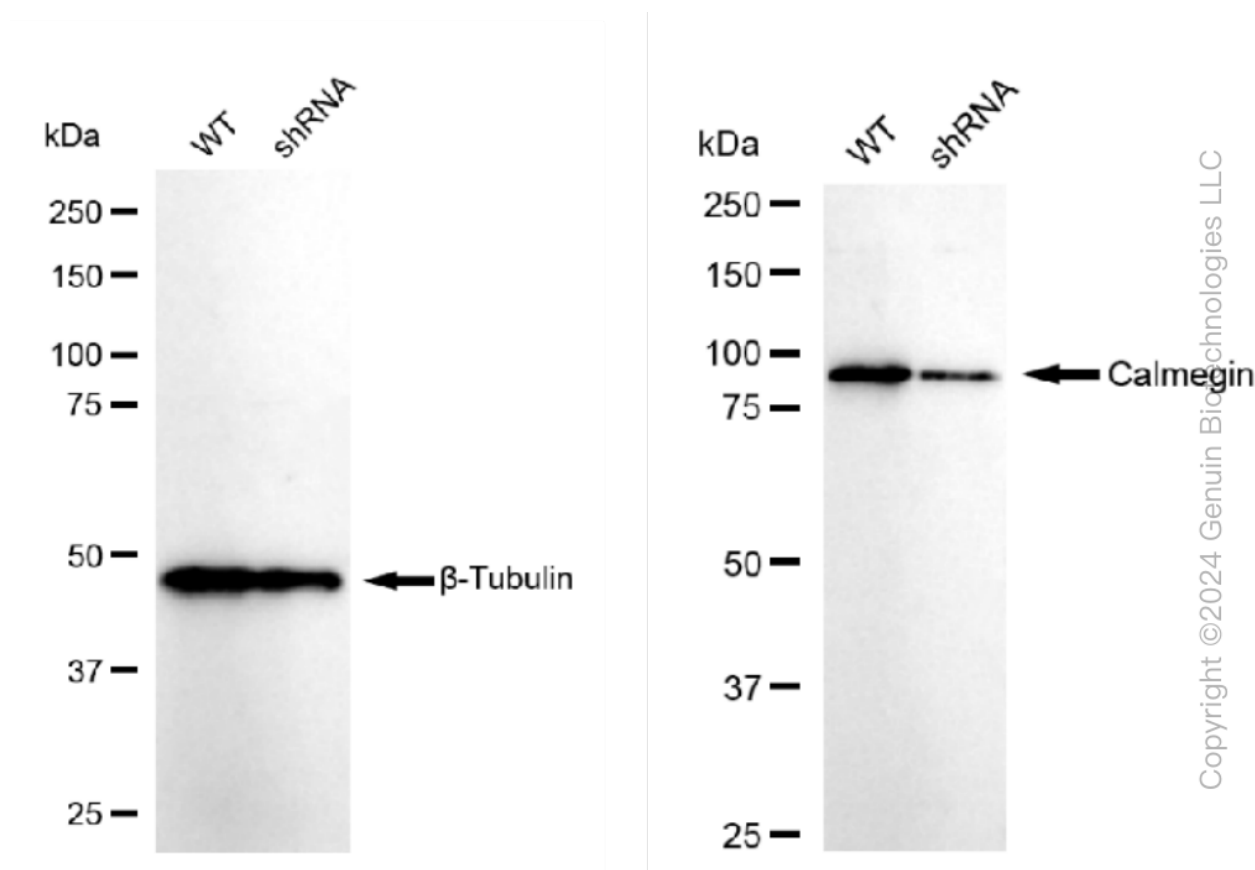
Immunocytochemical staining of HepG2 cells with Calmegin antibody (Cat#61406, 1:1,000). Nuclei were stained blue with DAPI; Calmegin was stained magenta with Alexa Fluor® 647. Images were taken using Leica stellaris 5. Protein abundance based on laser Intensity and smart gain: Medium. Scale bar: 20 μ m.



KD-Validated Anti-Calmegin Recombinant Rabbit Monoclonal Antibody

PAGE 3

Western blotting analysis using anti-Calmegin antibody (Cat#61406). Total cell lysates (30 µg) from various cell lines were loaded and separated by SDS-PAGE. The blot was incubated with anti-Calmegin antibody (Cat#61406, 1:5,000) and HRP-conjugated goat anti-rabbit secondary antibody (Cat#201, 1:20,000) respectively. Image was developed using FeQ™ ECL Substrate Kit (Cat#226).



Western blotting analysis using anti-Calmegin antibody (Cat#61406). Calmegin expression in wild type (WT) and Calmegin shRNA knockdown (KD) HeLa cells with 30 µg of total cell lysates. β -Tubulin serves as a loading control. The blot was incubated with anti-Calmegin antibody (Cat#61406, 1:10,000) and HRP-conjugated goat anti-rabbit secondary antibody (Cat#201, 1:20,000) respectively. Image was developed using FeQ™ ECL Substrate Kit (Cat#226).

SUPPORT

SUPPORT@GENUINBIOTECH.COM
TEL: +1-540-855-7041

ORDERS

SALES@GENUINBIOTECH.COM
FAX: +1-540-855-7041

WWW.GENUINBIOTECH.COM