

# KD-Validated Anti-Chloride intracellular channel 4 Recombinant Rabbit Monoclonal



**Catalog #: 61409**

## Aliases

CLIC4; Chloride Intracellular Channel 4; P64H1 2; CLIC4L; H1; Intracellular Chloride Ion Channel Protein P64H1; Chloride Intracellular Channel Protein 4; DKFZP566G223; HuH1; Epididymis Secretory Sperm Binding Protein; Chloride Intracellular Channel 4 Like; MTCLIC; HUH1

## Background

Gene Name: CLIC4

NCBI Gene Entry: [25932](#)

UniProt Entry: [Q9Y696](#)

## Application Information

Molecular Weight: Predicted, 29 kDa, observed, 29 kDa

Clonality: Rabbit monoclonal antibody

Clone ID: 23GB3465

Species Reactivity: Human, mouse, rat

Applications Tested: Western blotting (WB), flow cytometry (FCM), immunocytochemistry (IC)

## Immunogen

A synthesized peptide derived from human CLIC4

## Isotype

Rabbit IgG

## Storage Buffer

Supplied in PBS (pH 7.4) containing 50% glycerol, and 0.02% sodium azide.

## Storage

Store at -20 °C for one year.

## Recommended Dilutions

Western Blotting (WB): 1:1,000-1:5,000

Flow Cytometry (FCM): 1:2,000

Immunocytochemistry (IC): 1:100-1:1,000

---

### SUPPORT

SUPPORT@GENUINBIOTECH.COM  
TEL: +1-540-855-7041

### ORDERS

SALES@GENUINBIOTECH.COM  
FAX: +1-540-855-7041

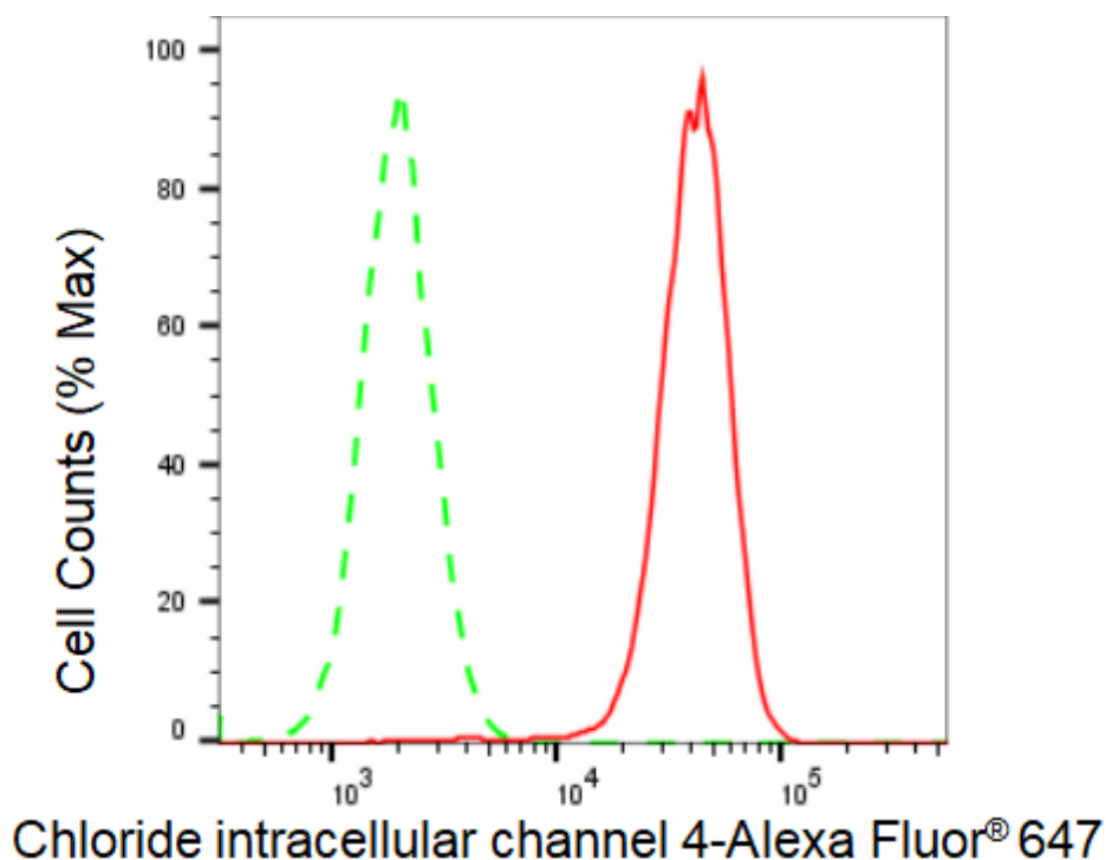
[WWW.GENUINBIOTECH.COM](http://WWW.GENUINBIOTECH.COM)

## KD-Validated Anti-Chloride intracellular channel 4 Recombinant Rabbit Monoclonal

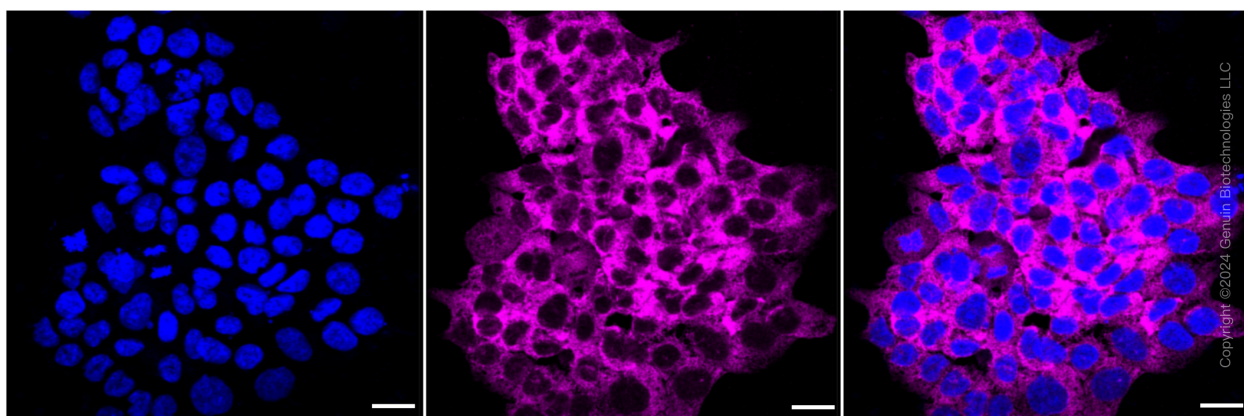
PAGE 2

**Note:** This product is for research use only.

### Validation Data



Flow cytometric analysis of Chloride intracellular channel 4 expression in HAP-1 cells using Chloride intracellular channel 4 antibody (Cat#61409, 1:2,000). Green, isotype control; red, Chloride intracellular channel 4.



Immunocytochemical staining of HAP-1 cells with Chloride intracellular channel 4 antibody (Cat#61409, 1:1,000). Nuclei were stained blue with DAPI; Chloride intracellular channel 4 was stained magenta with Alexa Fluor® 647. Images were taken using Leica stellaris 5. Protein

#### SUPPORT

SUPPORT@GENUINBIOTECH.COM  
TEL: +1-540-855-7041

#### ORDERS

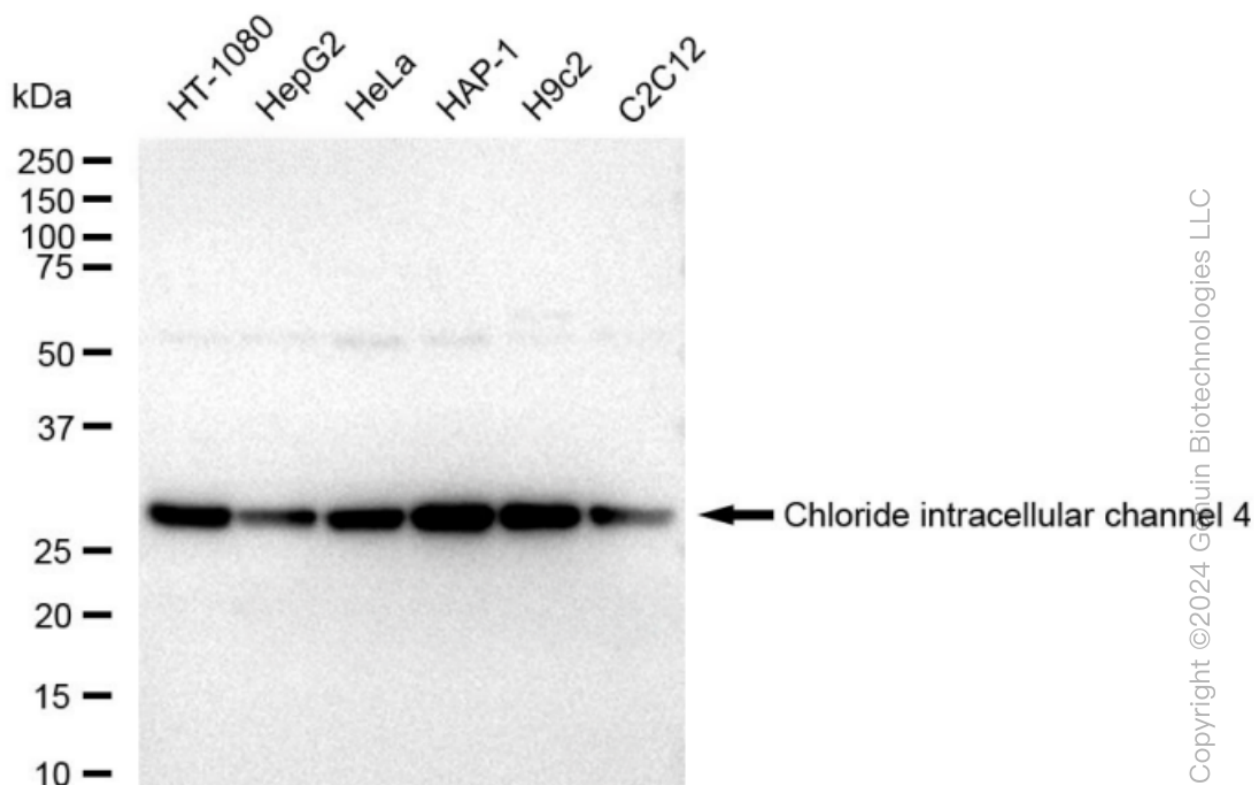
SALES@GENUINBIOTECH.COM  
FAX: +1-540-855-7041

WWW.GENUINBIOTECH.COM

## KD-Validated Anti-Chloride intracellular channel 4 Recombinant Rabbit Monoclonal

PAGE 3

abundance based on laser Intensity and smart gain: High. Scale bar: 20  $\mu$ m.



Western blotting analysis using anti-Chloride intracellular channel 4 antibody (Cat#61409). Total cell lysates (30  $\mu$ g) from various cell lines were loaded and separated by SDS-PAGE. The blot was incubated with anti-Chloride intracellular channel 4 antibody (Cat#61409, 1:5,000) and HRP-conjugated goat anti-rabbit secondary antibody (Cat#201, 1:20,000) respectively. Image was developed using FeQ™ ECL Substrate Kit (Cat#226).

### SUPPORT

SUPPORT@GENUINBIOTECH.COM  
TEL: +1-540-855-7041

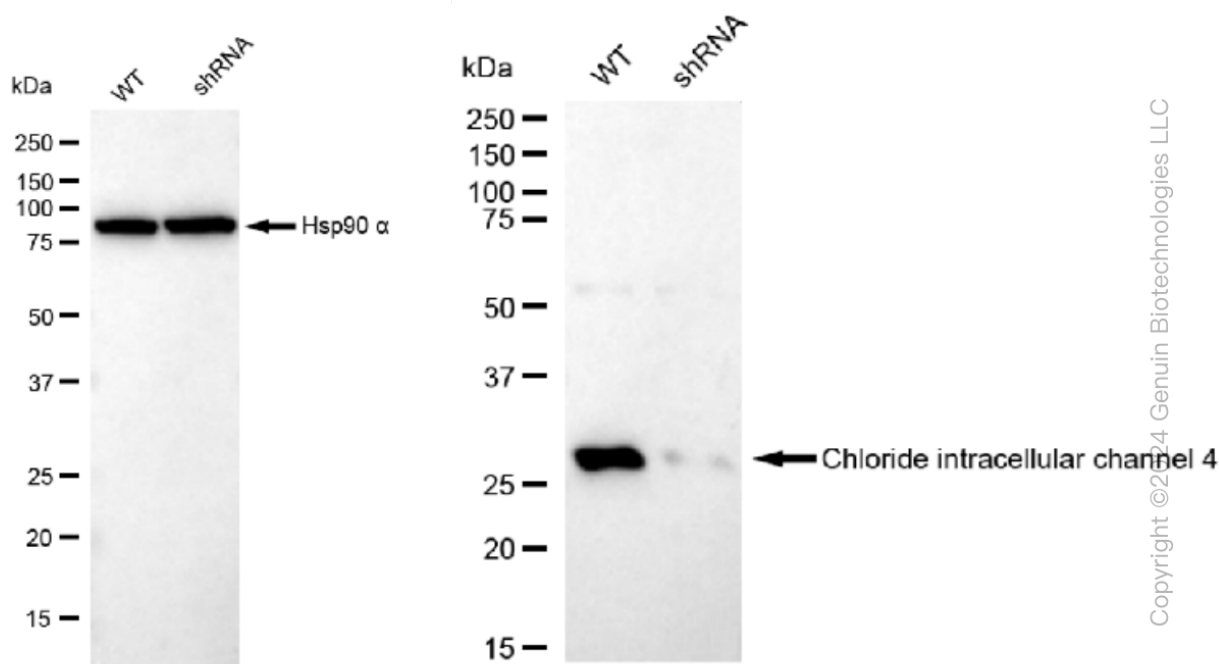
### ORDERS

SALES@GENUINBIOTECH.COM  
FAX: +1-540-855-7041

WWW.GENUINBIOTECH.COM

## KD-Validated Anti-Chloride intracellular channel 4 Recombinant Rabbit Monoclonal

PAGE 4



Western blotting analysis using anti-Chloride intracellular channel 4 antibody (Cat#61409). Chloride intracellular channel 4 expression in wild type (WT) and Chloride intracellular channel 4 shRNA knockdown (KD) HeLa cells with 30  $\mu$ g of total cell lysates.  $\beta$ -Tubulin serves as a loading control. The blot was incubated with anti-Chloride intracellular channel 4 antibody (Cat#61409, 1:5,000) and HRP-conjugated goat anti-rabbit secondary antibody (Cat#201, 1:20,000) respectively. Image was developed using FeQ™ ECL Substrate Kit (Cat#226).

### SUPPORT

SUPPORT@GENUINBIOTECH.COM  
TEL: +1-540-855-7041

### ORDERS

SALES@GENUINBIOTECH.COM  
FAX: +1-540-855-7041

[WWW.GENUINBIOTECH.COM](http://WWW.GENUINBIOTECH.COM)