

# KD-Validated Anti-CSDE1 Recombinant Rabbit Monoclonal Antibody



**Catalog #: 61411**

## Aliases

CSDE1; Cold Shock Domain Containing E1; D1S155E; UNR; Cold Shock Domain Containing E1, RNA Binding; Cold Shock Domain-Containing Protein E1; N-Ras Upstream Gene Protein; Upstream Of NRAS; NRAS-Related; Protein UNR; KIAA0885; NRU

## Background

Gene Name: CSDE1

NCBI Gene Entry: [7812](#)

UniProt Entry: [O75534](#)

## Application Information

Molecular Weight: Predicted, 89 kDa, observed, 89 kDa

Clonality: Rabbit monoclonal antibody

Clone ID: 23GB3505

Species Reactivity: Human, mouse, rat

Applications Tested: Western blotting (WB), flow cytometry (FCM), immunocytochemistry (IC)

## Immunogen

A synthesized peptide derived from human CSDE1

## Isotype

Rabbit IgG

## Storage Buffer

Supplied in PBS (pH 7.4) containing 50% glycerol, and 0.02% sodium azide.

## Storage

Store at -20 °C for one year.

## Recommended Dilutions

Western Blotting (WB): 1:1,000-1:5,000

Flow Cytometry (FCM): 1:2,000

Immunocytochemistry (IC): 1:100-1:1,000

**Note:** This product is for research use only.

---

### SUPPORT

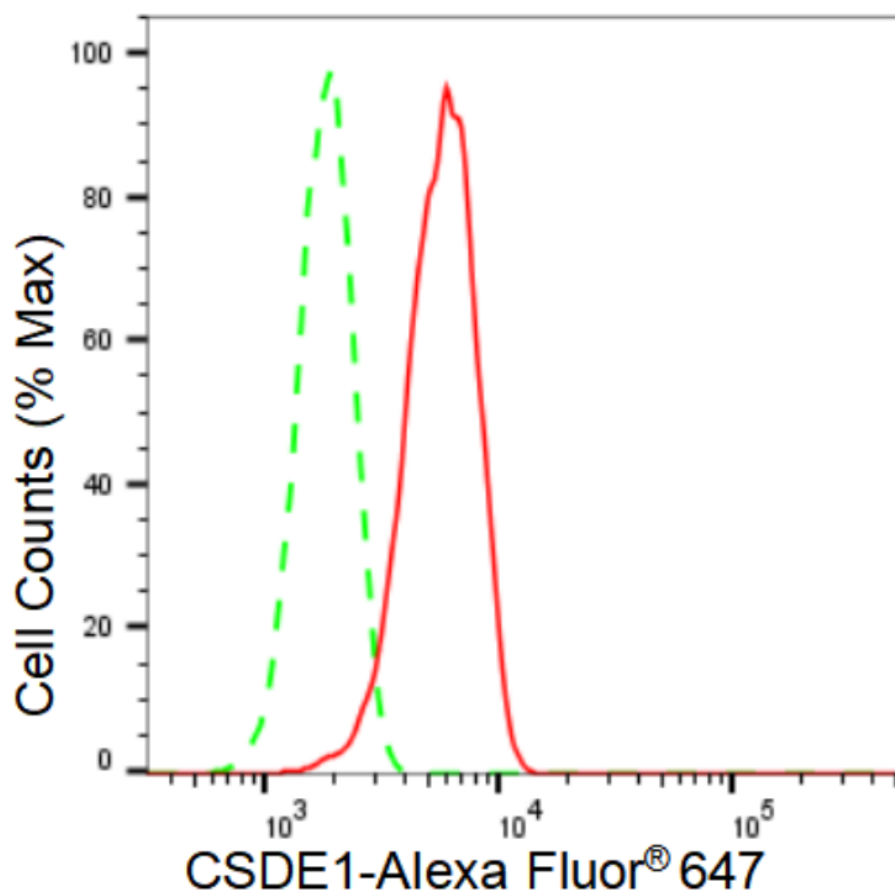
SUPPORT@GENUINBIOTECH.COM  
TEL: +1-540-855-7041

### ORDERS

SALES@GENUINBIOTECH.COM  
FAX: +1-540-855-7041

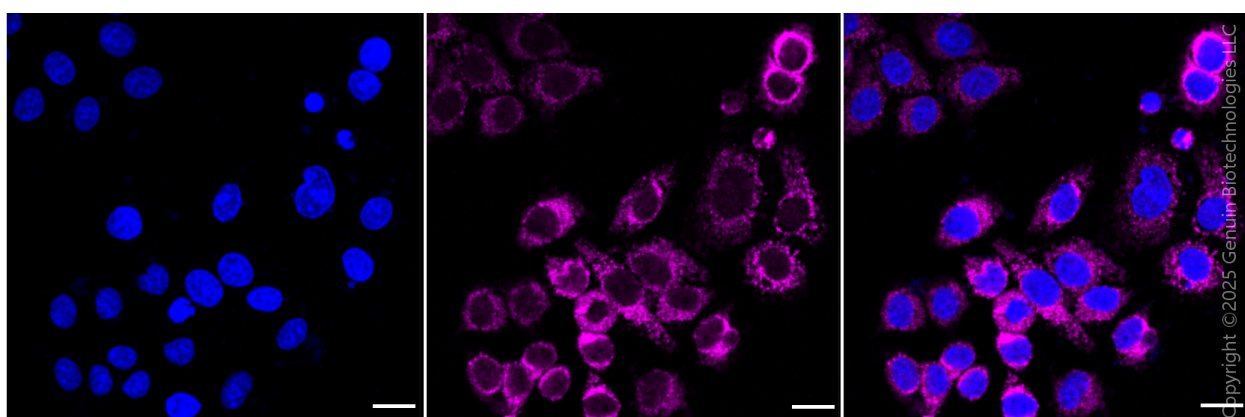
[WWW.GENUINBIOTECH.COM](http://WWW.GENUINBIOTECH.COM)

**Validation Data**



Copyright ©2024 Genuin Biotechnologies LLC

Flow cytometric analysis of CSDE1 expression in HT-1080 cells using CSDE1 antibody (Cat#61411, 1:2,000). Green, isotype control; red, CSDE1.



Copyright ©2025 Genuin Biotechnologies LLC

Immunocytochemical staining of HepG2 cells with anti-CSDE1 antibody (Cat#61411, 1:1000). Nuclei were stained blue with DAPI; CSDE1 was stained magenta with Alexa Fluor® 647. Images were taken using Leica stellaris 5. Protein abundance based on laser Intensity and smart gain: Medium. Scale bar, 20 µm.

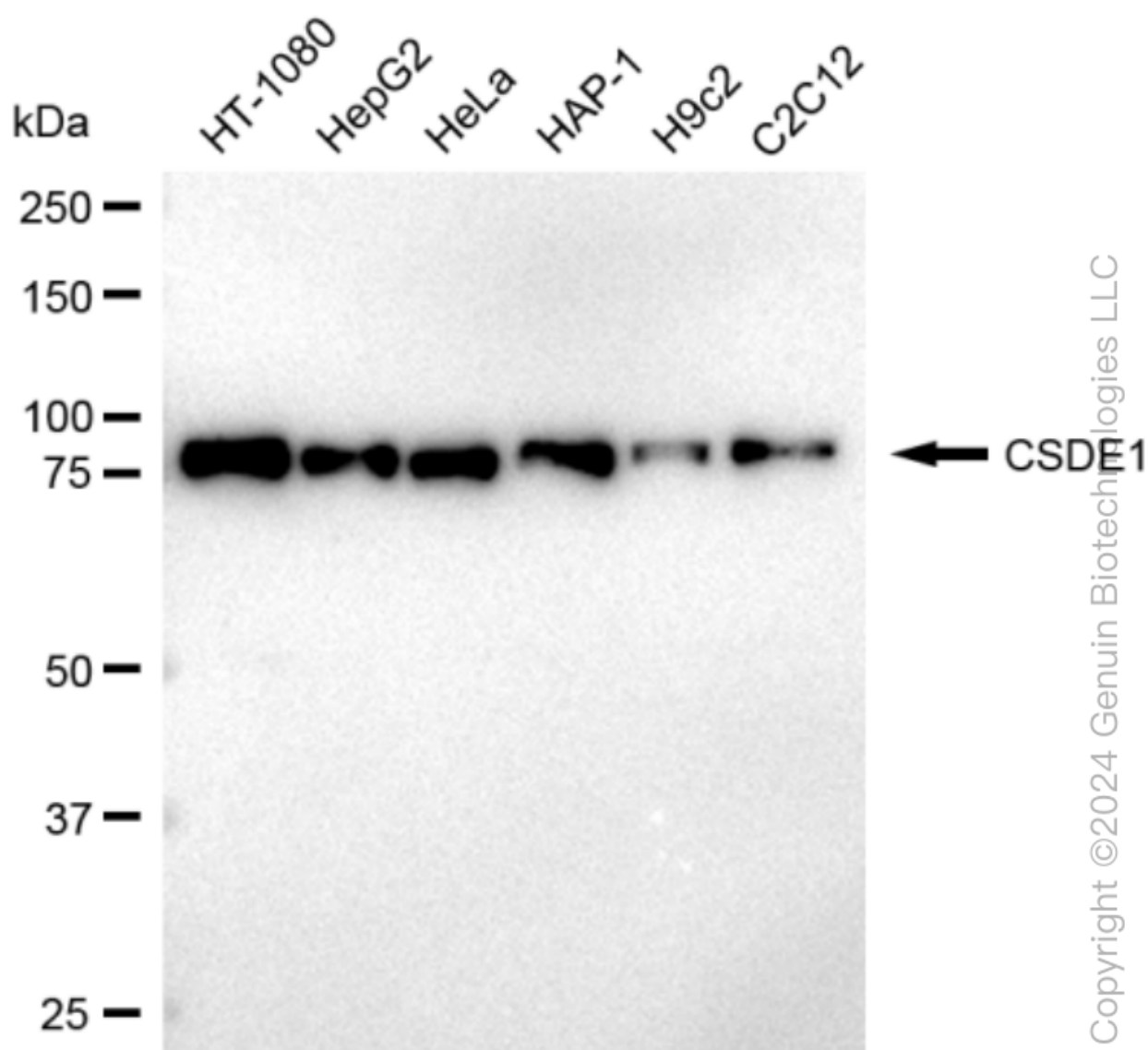
**SUPPORT**

SUPPORT@GENUINBIOTECH.COM  
TEL: +1-540-855-7041

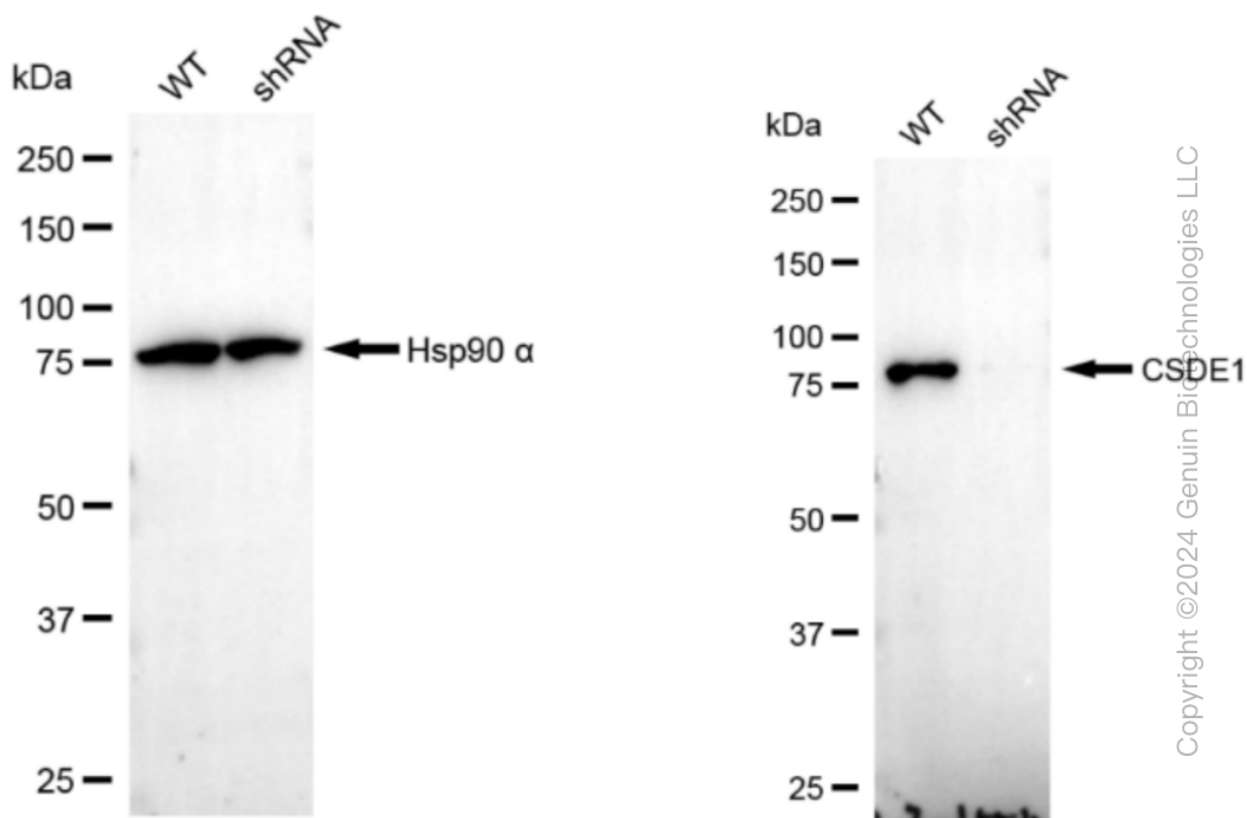
**ORDERS**

SALES@GENUINBIOTECH.COM  
FAX: +1-540-855-7041

**WWW.GENUINBIOTECH.COM**



Western blotting analysis using anti-CSDE1 antibody (Cat#61411). Total cell lysates (30 µg) from various cell lines were loaded and separated by SDS-PAGE. The blot was incubated with anti-CSDE1 antibody (Cat#61411, 1:5,000) and HRP-conjugated goat anti-rabbit secondary antibody (Cat#201, 1:20,000) respectively. Image was developed using FeQ™ ECL Substrate Kit (Cat#226).



Western blotting analysis using anti-CSDE1 antibody (Cat#61411). CSDE1 expression in wild type (WT) and CSDE1 shRNA knockdown (KD) HeLa cells with 30 µg of total cell lysates. β-Tubulin serves as a loading control. The blot was incubated with anti-CSDE1 antibody (Cat#61411, 1:5,000) and HRP-conjugated goat anti-rabbit secondary antibody (Cat#201, 1:20,000) respectively. Image was developed using FeQ™ ECL Substrate Kit (Cat#226).