

KD-Validated Anti-FKBP8 Recombinant Rabbit Monoclonal Antibody



Catalog #: 61412

Aliases

FKBP8; FKBP Prolyl Isomerase 8; FKBP38; Peptidyl-Prolyl Cis-Trans Isomerase FKBP8; FK506 Binding Protein 8, 38kDa; 38 KDa FK506-Binding Protein; FK506-Binding Protein 8; PPIase FKBP8; 38 KDa FKBP; Rotamase; FKBPPr38; FKBP-38; HFKBP38; FKBPR38; FKBP-8; FK506-Binding Protein 8 (38kD); FK506 Binding Protein 8; EC 5.2.1.8

Background

Gene Name: FKBP8

NCBI Gene Entry: [23770](#)

UniProt Entry: [Q14318](#)

Application Information

Molecular Weight: Predicted, 45 kDa; observed, 52 kDa

Clonality: Rabbit monoclonal antibody

Clone ID: 25GB2450

Species Reactivity: Human

Applications Tested: Western blotting (WB), flow cytometry (FCM), immunocytochemistry (IC)

Immunogen

A synthesized peptide derived from human FKBP38

Isotype

Rabbit IgG

Storage Buffer

Supplied in PBS (pH 7.4) containing 50% glycerol, and 0.02% sodium azide.

Storage

Store at -20 °C for one year.

Recommended Dilutions

Western blotting (WB): 1:1,000-1:5,000

Flow Cytometry (FCM): 1:2,000

Immunocytochemistry (IC): 1:100-1:1,000

SUPPORT

SUPPORT@GENUINBIOTECH.COM
TEL: +1-540-855-7041

ORDERS

SALES@GENUINBIOTECH.COM
FAX: +1-540-855-7041

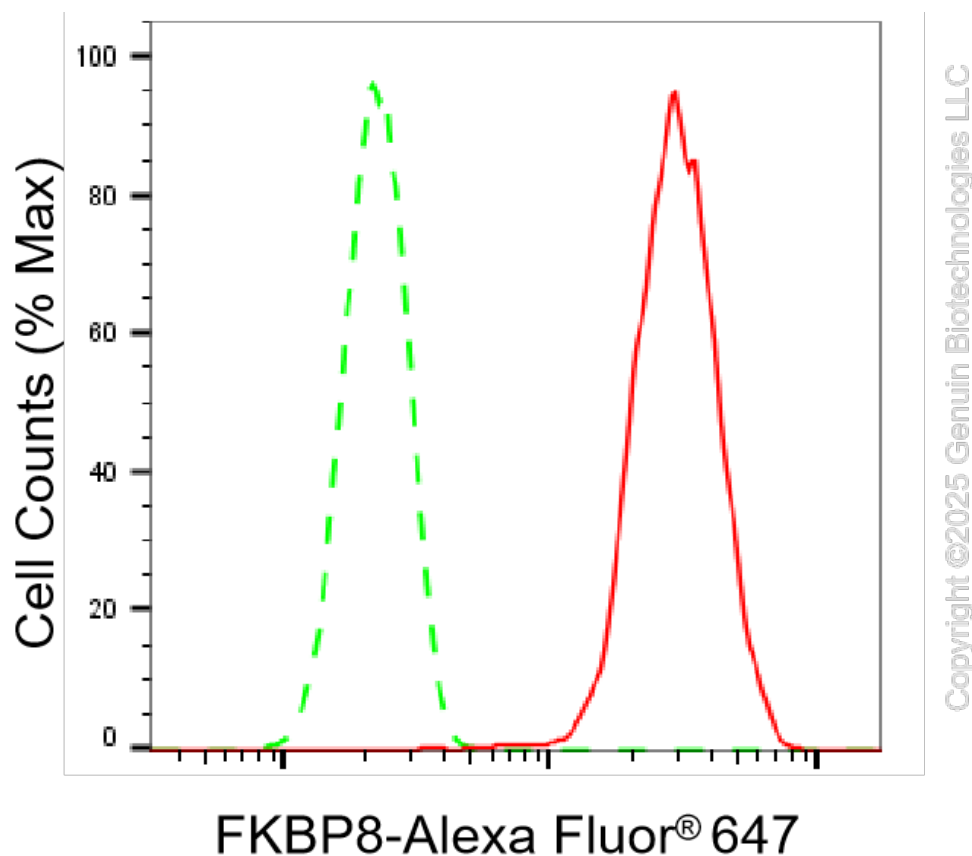
WWW.GENUINBIOTECH.COM

KD-Validated Anti-FKBP8 Recombinant Rabbit Monoclonal Antibody

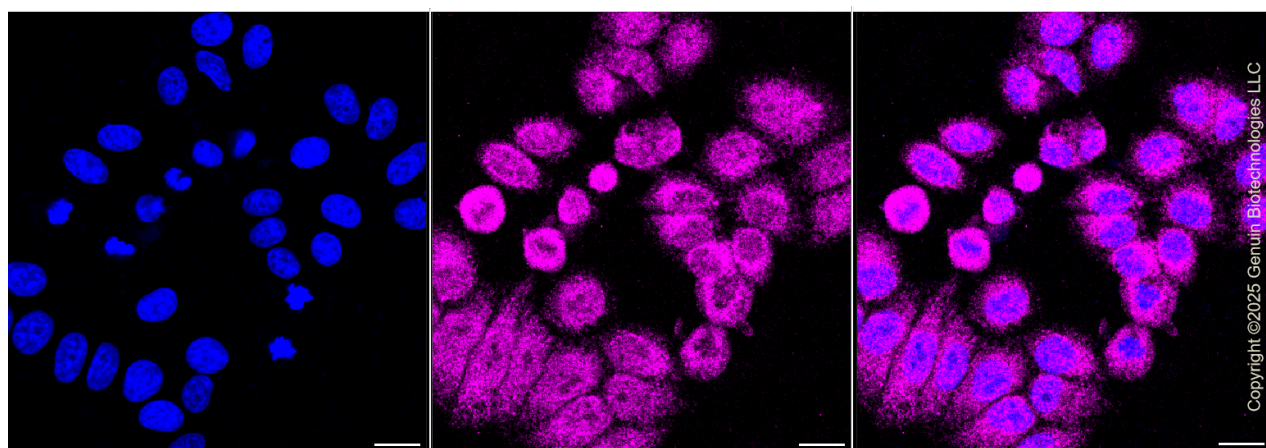
PAGE 2

Note: This product is for research use only.

Validation Data



Flow cytometric analysis of FKBP8 expression in HepG2 cells using FKBP8 antibody (Cat#61412, 1:2,000). Green, isotype control; red, FKBP8.



Immunocytochemical staining of HepG2 cells with anti-FKBP8 antibody (Cat#61412, 1:1,000). Nuclei were stained blue with anti-DAPI; FKBP8 was stained magenta with Alexa Fluor® 647. Images were taken using Leica stellaris 5. Protein abundance based on laser Intensity and smart

SUPPORT

SUPPORT@GENUINBIOTECH.COM
TEL: +1-540-855-7041

ORDERS

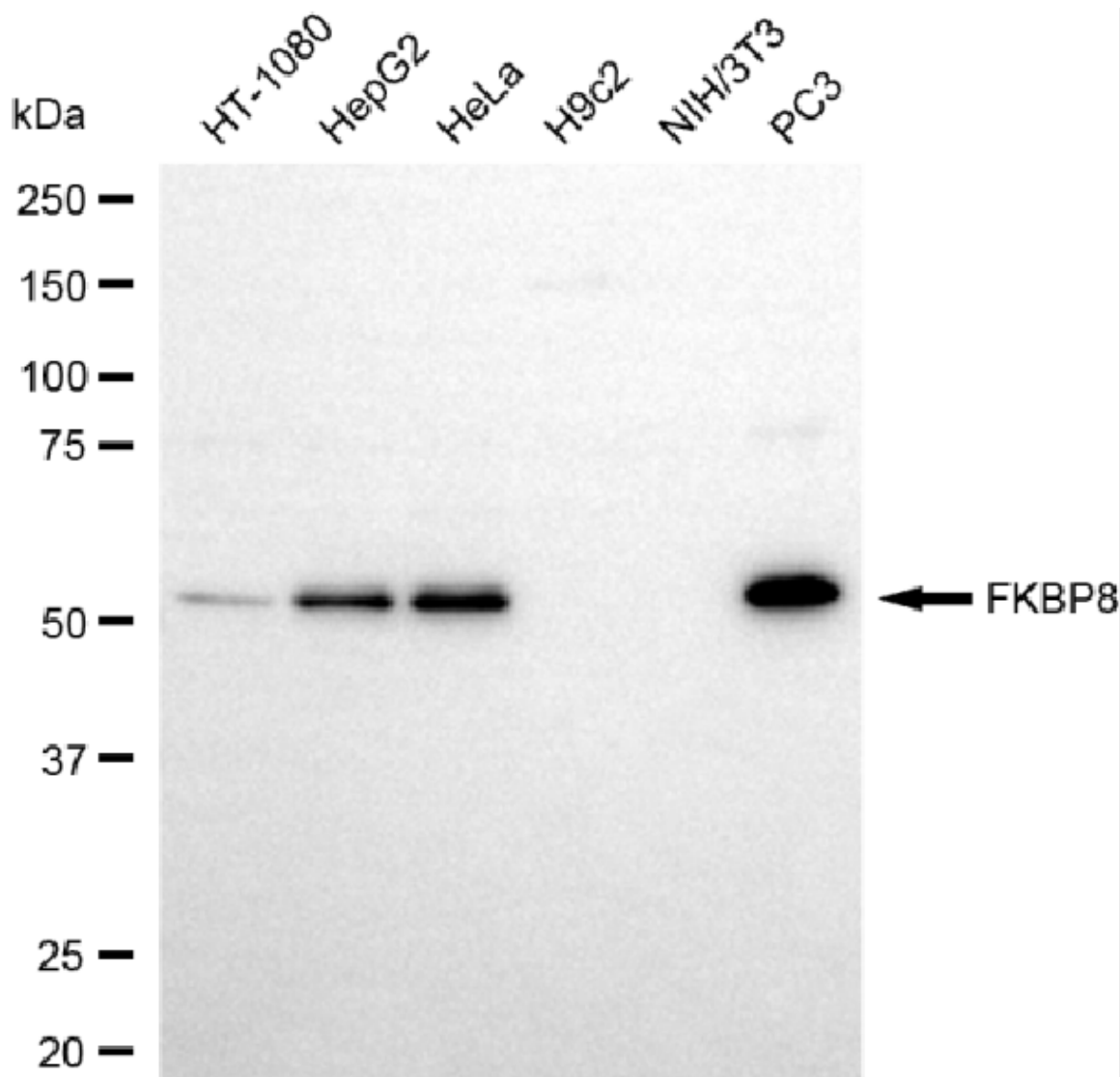
SALES@GENUINBIOTECH.COM
FAX: +1-540-855-7041

WWW.GENUINBIOTECH.COM

KD-Validated Anti-FKBP8 Recombinant Rabbit Monoclonal Antibody

PAGE 3

gain: Low. Scale bar, 20 μ m.



Western blotting analysis using anti-FKBP8 antibody (Cat#61412). Total cell lysates (30 μ g) from various cell lines were loaded and separated by SDS-PAGE. The blot was incubated with anti-FKBP8 antibody (Cat#61412, 1:5,000) and HRP-conjugated goat anti-rabbit secondary antibody (Cat#201, 1:20,000) respectively. Image was developed using NaQ™ ECL Substrate Kit (Cat#716).

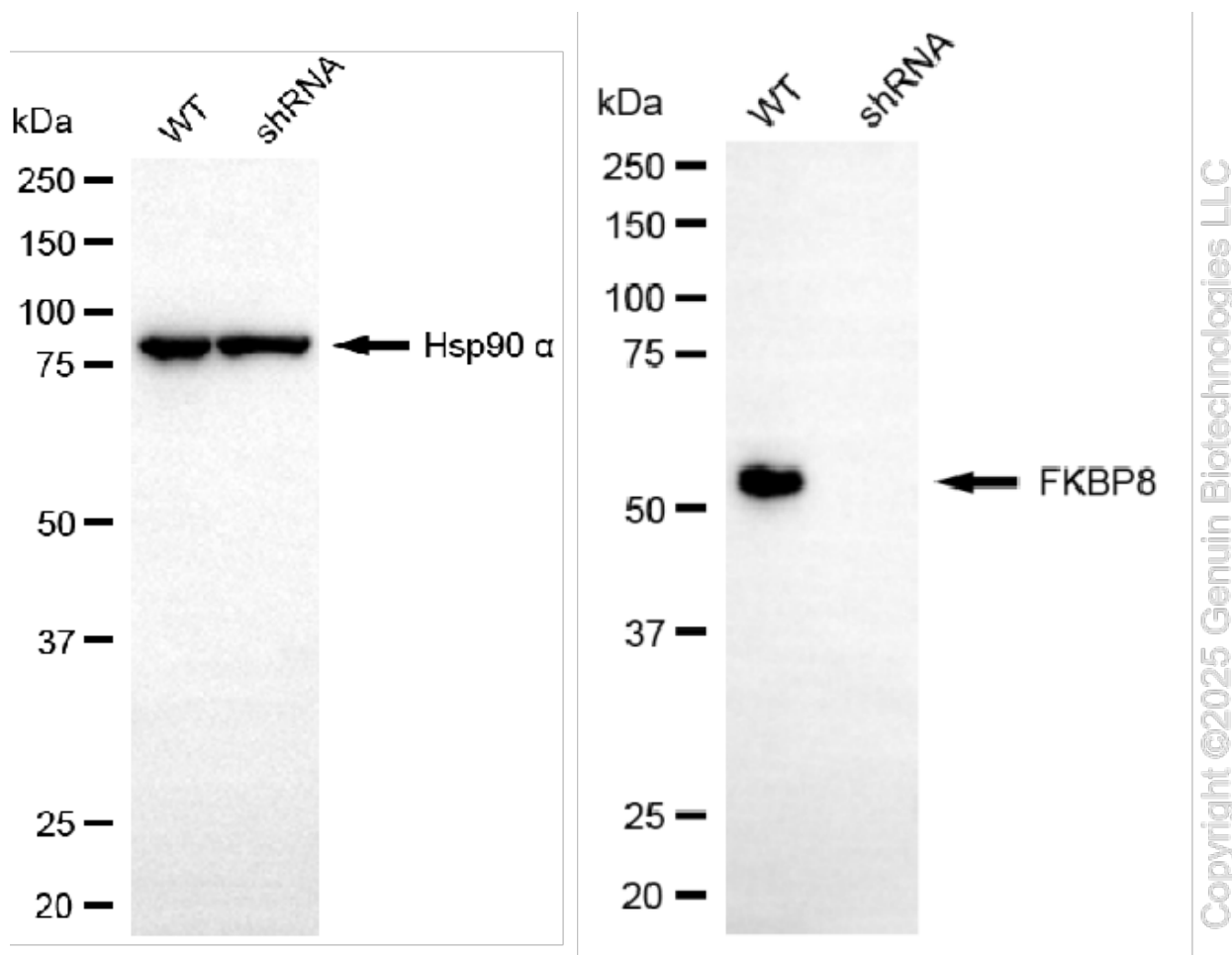
SUPPORT

SUPPORT@GENUINBIOTECH.COM
TEL: +1-540-855-7041

ORDERS

SALES@GENUINBIOTECH.COM
FAX: +1-540-855-7041

WWW.GENUINBIOTECH.COM



Western blotting analysis using anti-FKBP8 antibody (Cat#61412). FKBP8 expression in wild-type (WT) and FKBP8 shRNA knockdown (KD) HeLa cells with 20 μ g of total cell lysates. Hsp90 α serves as a loading control. The blot was incubated with anti-FKBP8 antibody (Cat#61412, 1:5,000) and HRP-conjugated goat anti-rabbit secondary antibody (Cat#201, 1:20,000) respectively. Image was developed using NaQ™ ECL Substrate Kit (Cat#716).