

KD-Validated Anti-EIF3E Recombinant Rabbit Monoclonal Antibody



Catalog #: 61415

Aliases

EIF3E; Eukaryotic Translation Initiation Factor 3 Subunit E; EIF3-P48; EIF3S6; INT6; Eukaryotic Translation Initiation Factor 3, Subunit 6 48kDa; Eukaryotic Translation Initiation Factor 3 Subunit 6; Viral Integration Site Protein INT-6 Homolog; EIF-3 P48; Eukaryotic Translation Initiation Factor 3, Subunit 6 (48kD); Murine Mammary Tumor Integration Site 6 (Oncogene Homolog); Eukaryotic Translation Initiation Factor 3, Subunit E; Mammary Tumor-Associated Protein INT6; EIF3-P46; EIF3e

Background

Gene Name: EIF3E

NCBI Gene Entry: [3646](#)

UniProt Entry: [P60228](#)

Application Information

Molecular Weight: Predicted, 52 kDa; observed, 45 kDa

Clonality: Rabbit monoclonal antibody

Clone ID: 25GB2455

Species Reactivity: Human, mouse, rat

Applications Tested: Western blotting (WB), flow cytometry (FCM)

Immunogen

A synthesized peptide derived from human eIF3e

Isotype

Rabbit IgG

Storage Buffer

Supplied in PBS (pH 7.4) containing 50% glycerol, and 0.02% sodium azide.

Storage

Store at -20 °C for one year.

Recommended Dilutions

Western Blotting (WB): 1:1,000-1:5,000

Flow Cytometry (FCM): 1:2,000

SUPPORT

SUPPORT@GENUINBIOTECH.COM
TEL: +1-540-855-7041

ORDERS

SALES@GENUINBIOTECH.COM
FAX: +1-540-855-7041

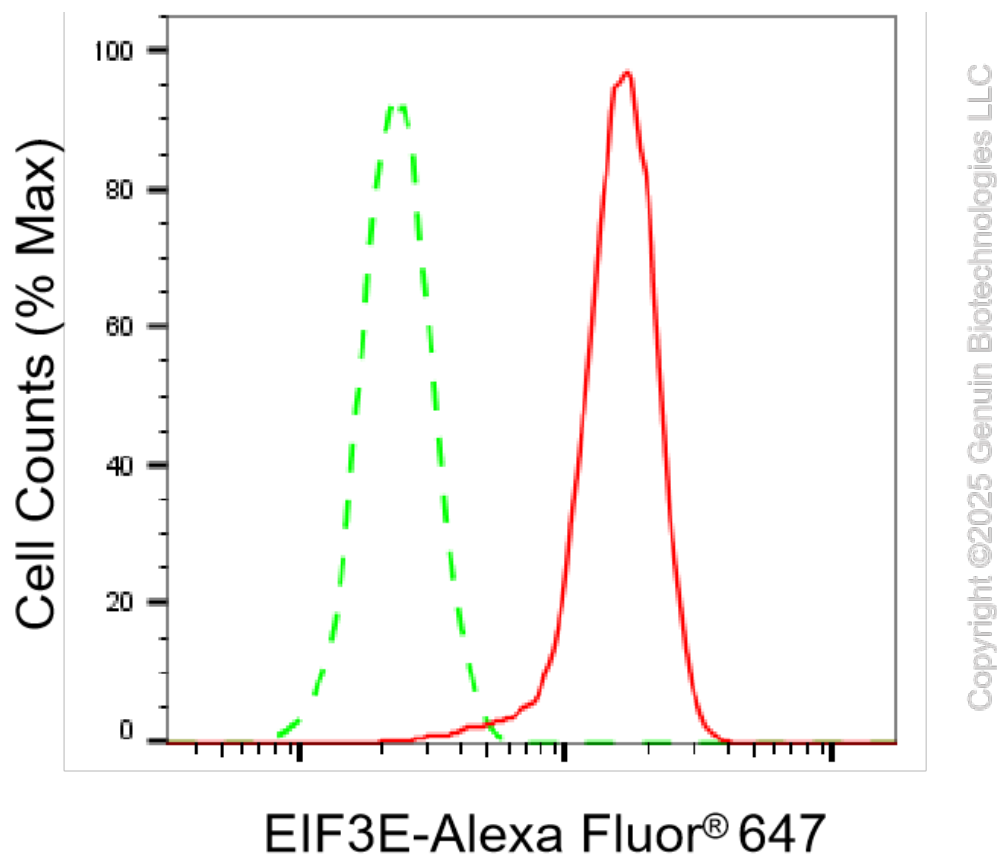
WWW.GENUINBIOTECH.COM

KD-Validated Anti-EIF3E Recombinant Rabbit Monoclonal Antibody

PAGE 2

Note: This product is for research use only.

Validation Data



Flow cytometric analysis of EIF3E expression in HeLa cells using EIF3E antibody (Cat#61415, 1:2,000). Green, isotype control; red, EIF3E.

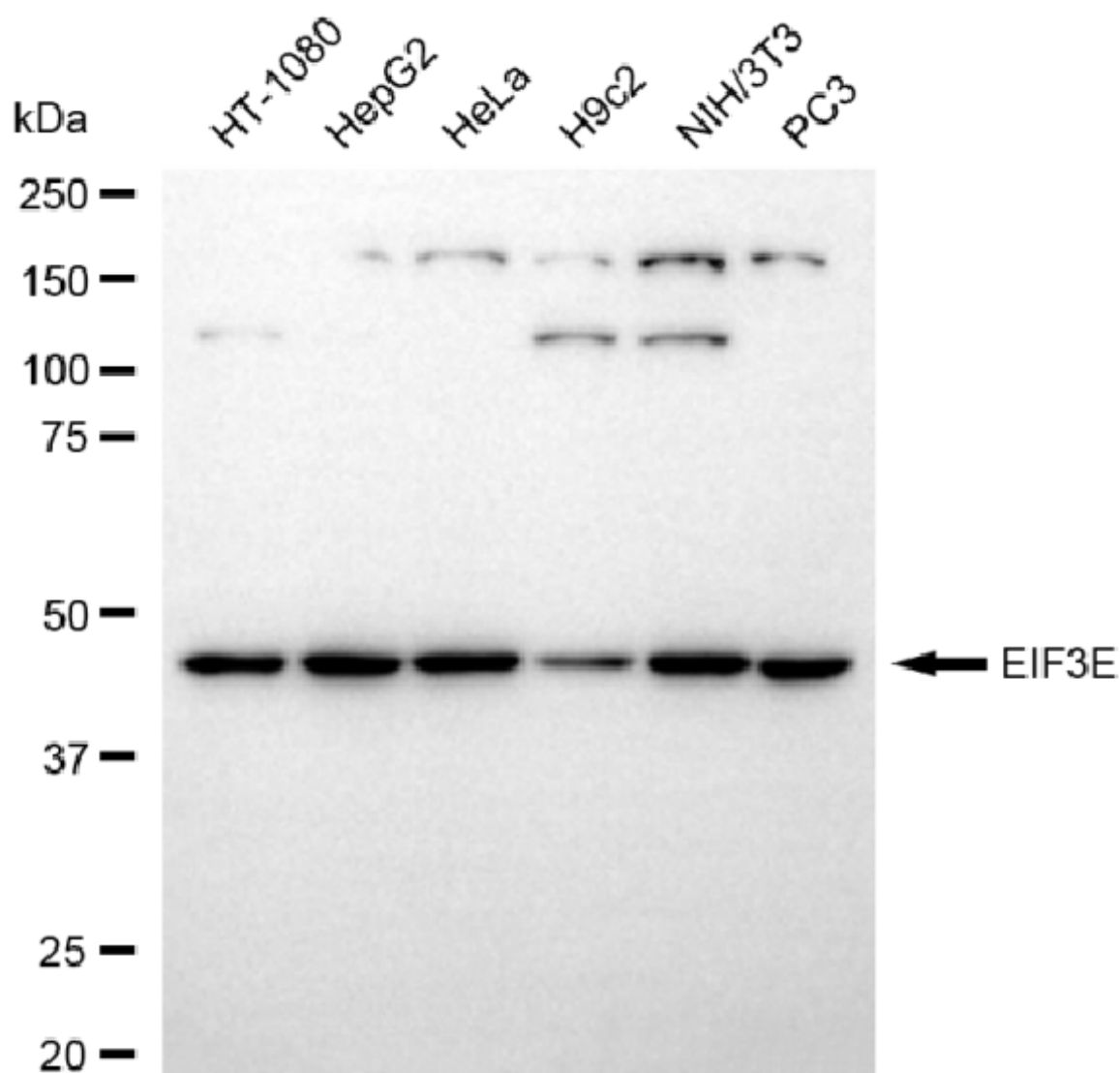
SUPPORT

SUPPORT@GENUINBIOTECH.COM
TEL: +1-540-855-7041

ORDERS

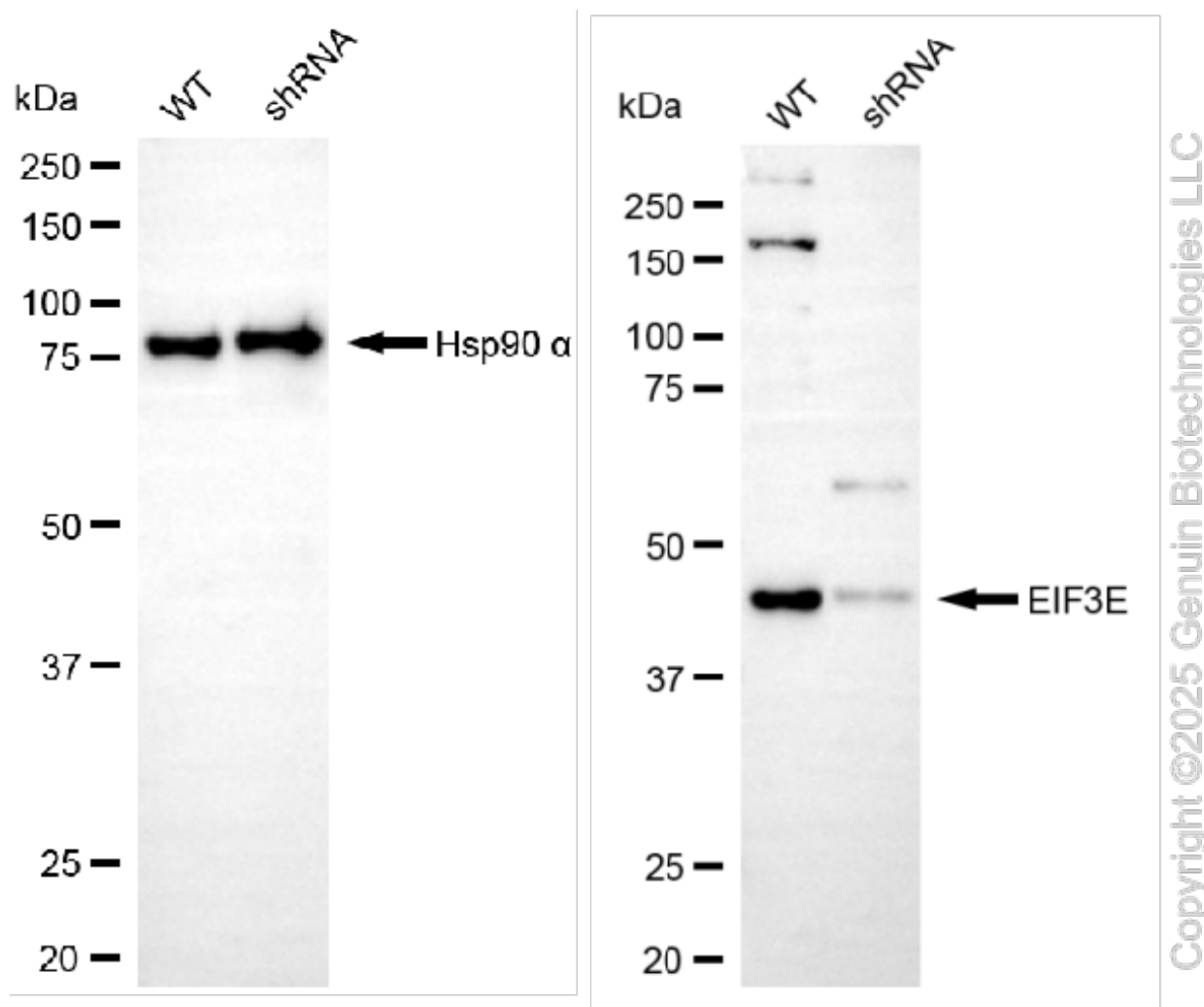
SALES@GENUINBIOTECH.COM
FAX: +1-540-855-7041

WWW.GENUINBIOTECH.COM



Copyright ©2025 Genuin Biotechnologies LLC

Western blotting analysis using anti-EIF3E antibody (Cat#61415). Total cell lysates (30 µg) from various cell lines were loaded and separated by SDS-PAGE. The blot was incubated with anti-EIF3E antibody (Cat#61415, 1:5,000) and HRP-conjugated goat anti-rabbit secondary antibody (Cat#201, 1:20,000) respectively. Image was developed using NaQ™ ECL Substrate Kit (Cat#716).



Western blotting analysis using anti-EIF3E antibody (Cat#61415). EIF3E expression in wild-type (WT) and EIF3E shRNA knockdown (KD) HSHC cells with 20 µg of total cell lysates. Hsp90 α serves as a loading control. The blot was incubated with anti-EIF3E antibody (Cat#61415, 1:5,000) and HRP-conjugated goat anti-rabbit secondary antibody (Cat#201, 1:20,000) respectively. Image was developed using NaQ™ ECL Substrate Kit (Cat#716).