

KD-Validated Anti-ABHD5 Recombinant Rabbit Monoclonal Antibody



Catalog #: 61417

Aliases

ABHD5; Antibodyhydrolase Domain Containing 5, Lysophosphatidic Acid Acyltransferase; NCIE2; 1-Acylglycerol-3-Phosphate O-Acyltransferase ABHD5; Antibodyhydrolase Domain-Containing Protein 5; Lipid Droplet-Binding Protein CGI-58; EC 2.3.1.51; CGI-58; Antibodyhydrolase Domain Containing 5; CGI58; IECN2

Background

Gene Name: ABHD5

NCBI Gene Entry: [51099](#)

UniProt Entry: [Q8WTS1](#)

Application Information

Molecular Weight: Predicted, 39 kDa, observed, 45 kDa

Clonality: Rabbit monoclonal antibody

Clone ID: 23GB3260

Species Reactivity: Human, mouse

Applications Tested: Western blotting (WB), flow cytometry (FCM), immunocytochemistry (IC)

Immunogen

A synthesized peptide derived from human ABHD5

Isotype

Rabbit IgG

Storage Buffer

Supplied in PBS (pH 7.4) containing 50% glycerol, and 0.02% sodium azide.

Storage

Store at -20 °C for one year.

Recommended Dilutions

Western Blotting (WB): 1:1,000-1:5,000

Flow Cytometry (FCM): 1:2,000

Immunocytochemistry (IC): 1:100-1:1,000

SUPPORT

SUPPORT@GENUINBIOTECH.COM
TEL: +1-540-855-7041

ORDERS

SALES@GENUINBIOTECH.COM
FAX: +1-540-855-7041

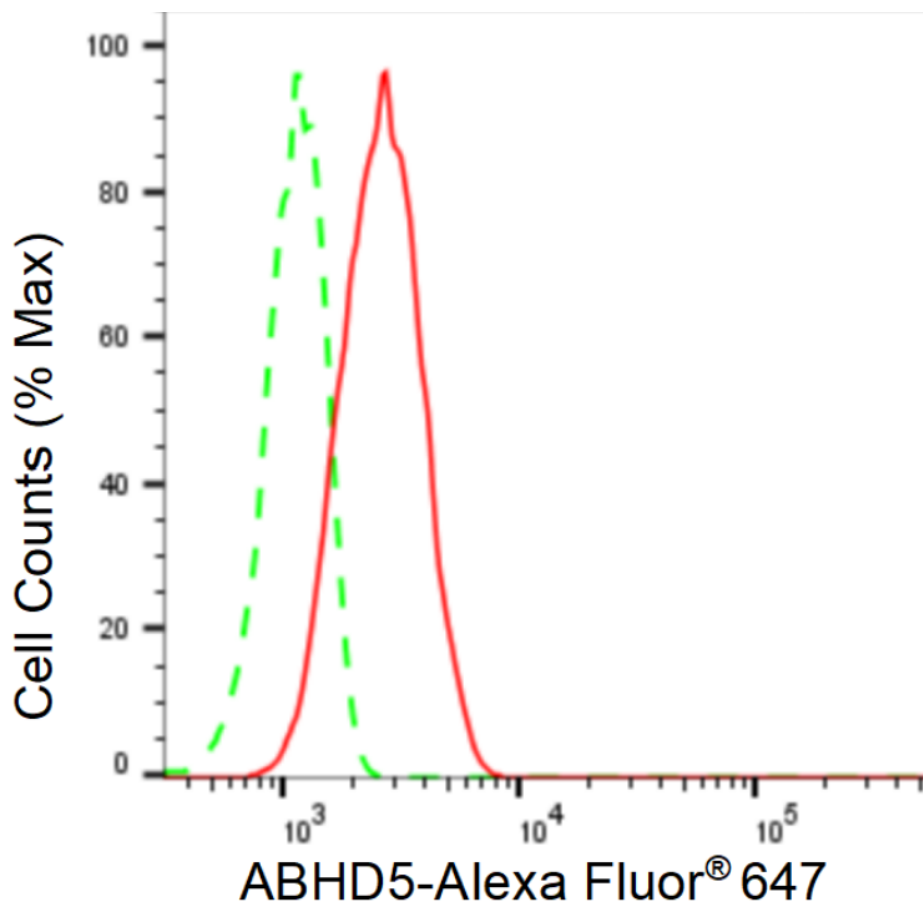
WWW.GENUINBIOTECH.COM

KD-Validated Anti-ABHD5 Recombinant Rabbit Monoclonal Antibody

PAGE 2

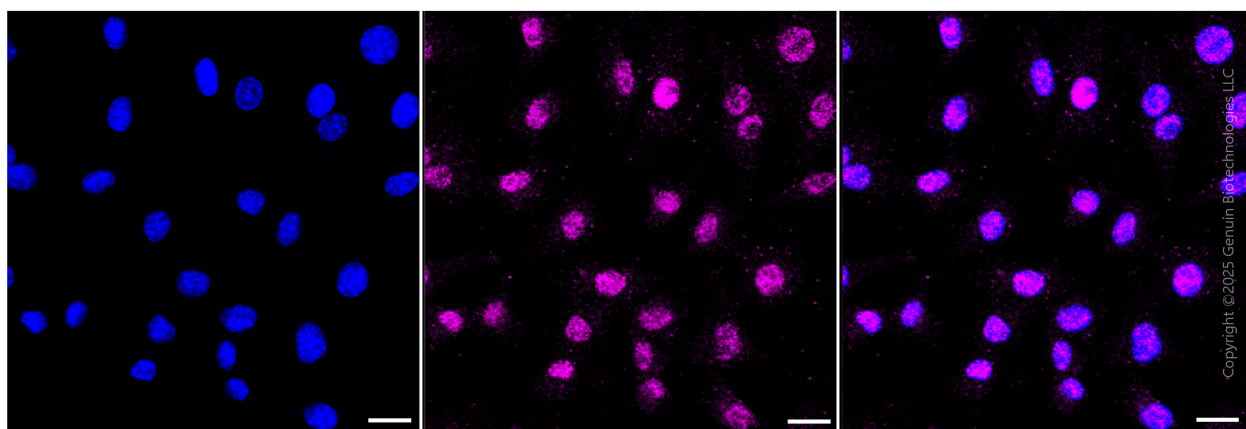
Note: This product is for research use only.

Validation Data



Copyright ©2024 Genuin Biotechnologies LLC

Flow cytometric analysis of ABHD5 expression in C2C12 cells using ABHD5 antibody (Cat#61417, 1:2,000). Green, isotype control; red, ABHD5.



Copyright ©2025 Genuin Biotechnologies LLC

SUPPORT

SUPPORT@GENUINBIOTECH.COM
TEL: +1-540-855-7041

ORDERS

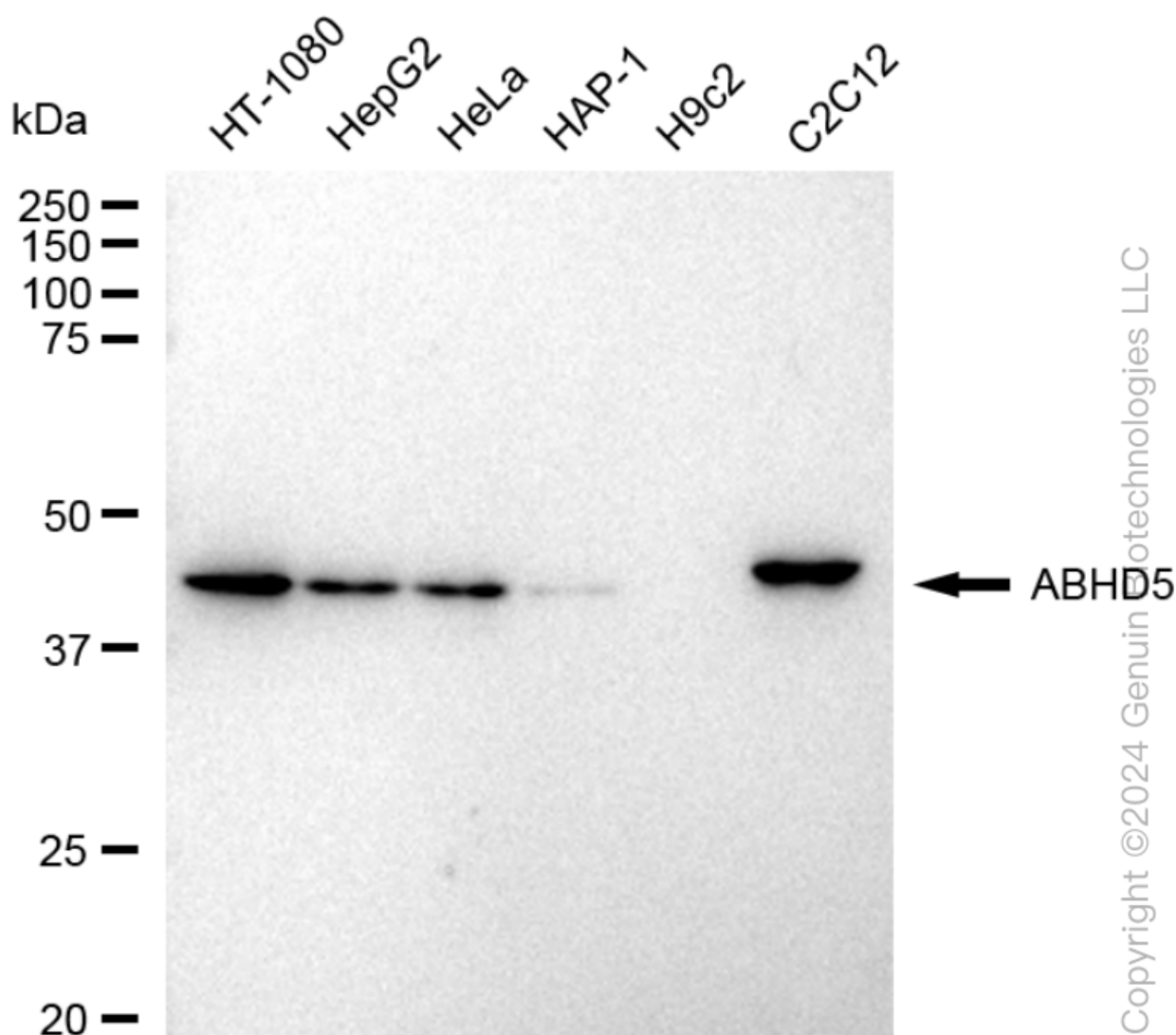
SALES@GENUINBIOTECH.COM
FAX: +1-540-855-7041

WWW.GENUINBIOTECH.COM

KD-Validated Anti-ABHD5 Recombinant Rabbit Monoclonal Antibody

PAGE 3

Images were taken using Leica stellaris 5. Protein abundance based on laser Intensity and smart gain: Low. Scale bar, 20 μ m.



Western blotting analysis using anti-ABHD5 antibody (Cat#61417). Total cell lysates (30 μ g) from various cell lines were loaded and separated by SDS-PAGE. The blot was incubated with anti-ABHD5 antibody (Cat#61417, 1:5,000) and HRP-conjugated goat anti-rabbit secondary antibody (Cat#201, 1:20,000) respectively. Image was developed using FeQ™ ECL Substrate Kit (Cat#226).

SUPPORT

SUPPORT@GENUINBIOTECH.COM
TEL: +1-540-855-7041

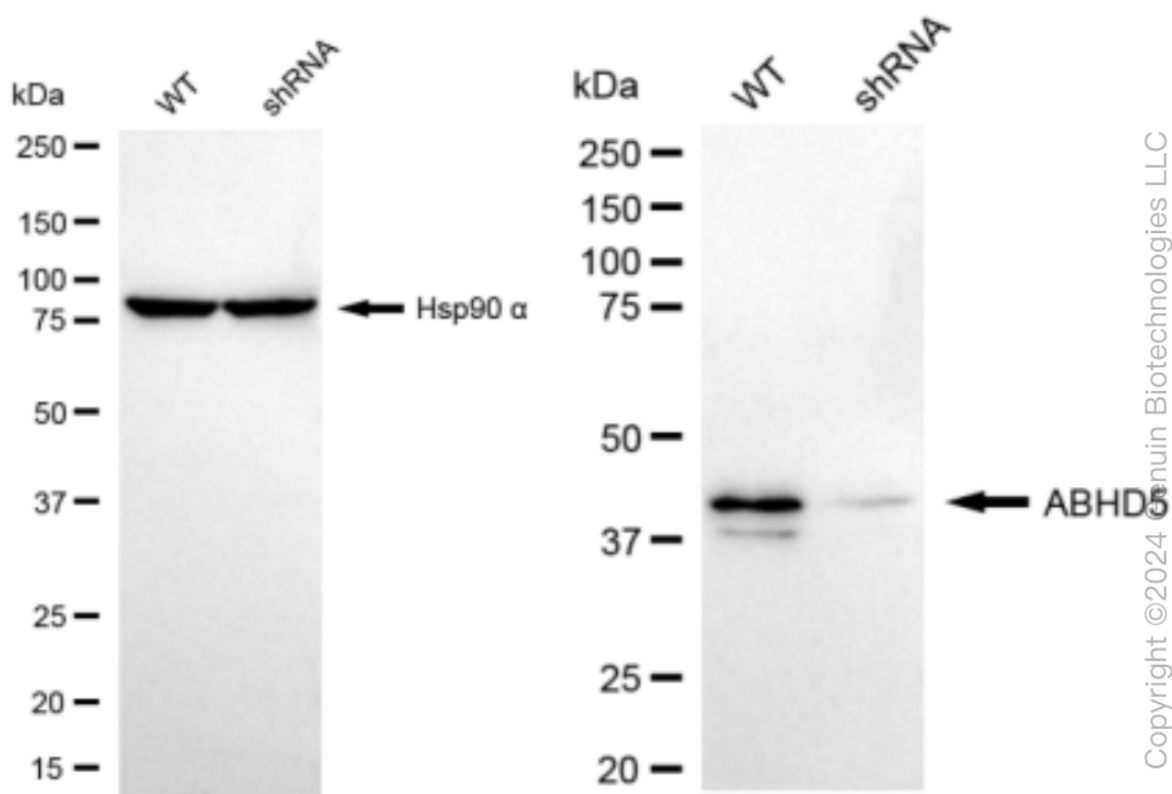
ORDERS

SALES@GENUINBIOTECH.COM
FAX: +1-540-855-7041

WWW.GENUINBIOTECH.COM

KD-Validated Anti-ABHD5 Recombinant Rabbit Monoclonal Antibody

PAGE 4



Western blotting analysis using anti-ABHD5 antibody (Cat#61417). ABHD5 expression in wild type (WT) and ABHD5 shRNA knockdown (KD) HeLa cells with 30 μ g of total cell lysates. Hsp90 α serves as a loading control. The blot was incubated with anti-ABHD5 antibody (Cat#61417, 1:5,000) and HRP-conjugated goat anti-rabbit secondary antibody (Cat#201, 1:20,000) respectively. Image was developed using FeQ™ ECL Substrate Kit (Cat#226).

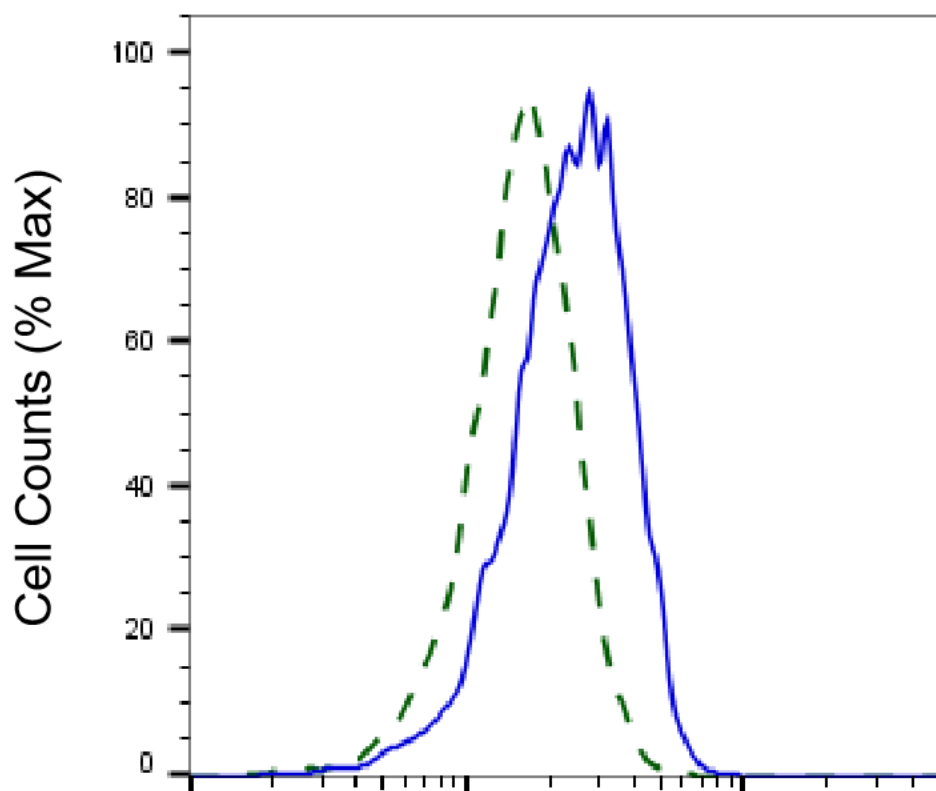
SUPPORT

SUPPORT@GENUINBIOTECH.COM
TEL: +1-540-855-7041

ORDERS

SALES@GENUINBIOTECH.COM
FAX: +1-540-855-7041

WWW.GENUINBIOTECH.COM



ABHD5-Alexa Fluor® 647

Validation of ABHD5 knockdown using flow cytometry. Wild-type(WT, Blue) and knockdown(KD, Green) HeLa cells were stained with anti-ABHD5 antibody (Cat#61417, 1:2,000) and analyzed using BD flow cytometer.