

KD-Validated Anti-Huntingtin interacting protein 1 Recombinant Rabbit Monoclonal



Catalog #: 61419

Aliases

HIP1; Huntingtin Interacting Protein 1; ILWEQ; Huntingtin-Interacting Protein 1; Huntingtin-Interacting Protein I; HIP-I; SHONgamma; SHONbeta; HIP-1; SHON

Background

Gene Name: HIP1

NCBI Gene Entry: [3092](#)

UniProt Entry: [O00291](#)

Application Information

Molecular Weight: Predicted, 116 kDa; observed, 116 kDa

Clonality: Rabbit monoclonal antibody

Clone ID: 25GB2470

Species Reactivity: Human, mouse, rat

Applications Tested: Western blotting (WB), flow cytometry (FCM), immunocytochemistry (IC)

Immunogen

A synthesized peptide derived from human HIP1

Isotype

Rabbit IgG

Storage Buffer

Supplied in PBS (pH 7.4) containing 50% glycerol, and 0.02% sodium azide.

Storage

Store at -20 °C for one year.

Recommended Dilutions

Western blotting (WB): 1:1,000-1:5,000

Flow Cytometry (FCM): 1:2,000

Immunocytochemistry (IC): 1:100-1:1,000

Note: This product is for research use only.

Validation Data

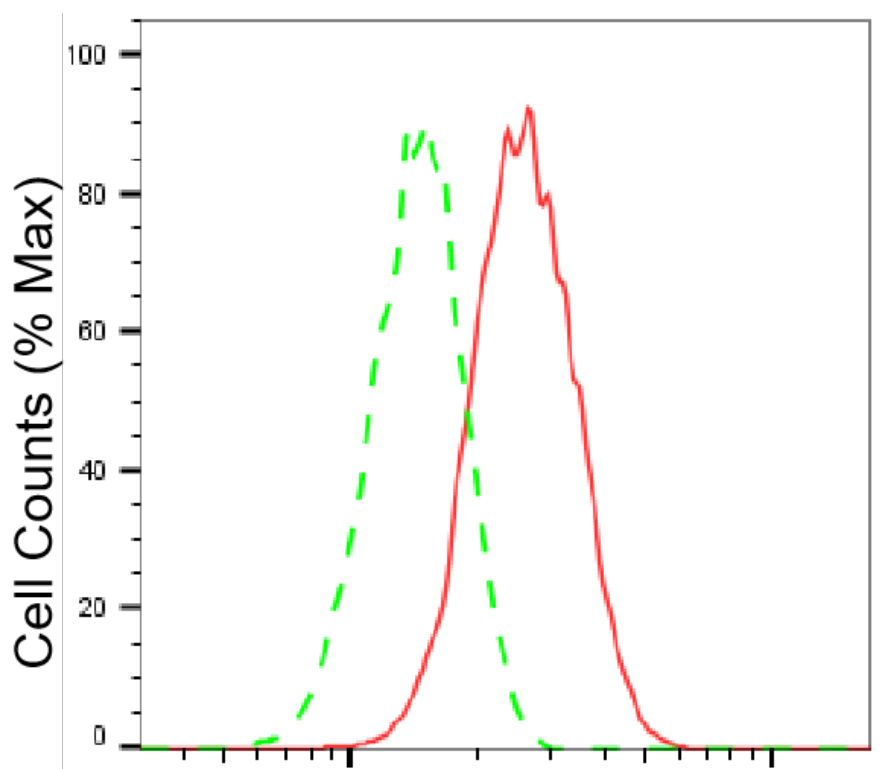
SUPPORT

SUPPORT@GENUINBIOTECH.COM
TEL: +1-540-855-7041

ORDERS

SALES@GENUINBIOTECH.COM
FAX: +1-540-855-7041

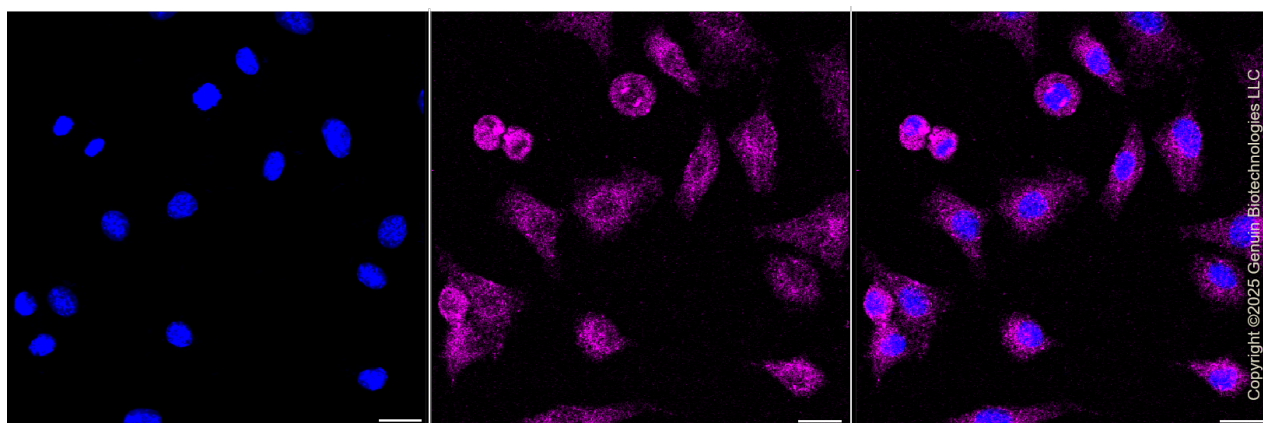
WWW.GENUINBIOTECH.COM



Copyright ©2025 Genuin Biotechnologies LLC

Huntingtin interacting protein 1-Alexa Fluor® 647

Flow cytometric analysis of Huntingtin interacting protein 1 expression in C2C12 cells using Huntingtin interacting protein 1 antibody (Cat#61419, 1:2,000). Green, isotype control; red, Huntingtin interacting protein 1.



Copyright ©2025 Genuin Biotechnologies LLC

Immunocytochemical staining of C2C12 cells with anti-Huntingtin interacting protein 1 antibody (Cat#61419, 1:1,000). Nuclei were stained blue with DAPI; Huntingtin interacting protein 1 was stained magenta with Alexa Fluor® 647. Images were taken using Leica stellaris 5. Protein abundance based on laser Intensity and smart gain: Low. Scale bar, 20 μm.

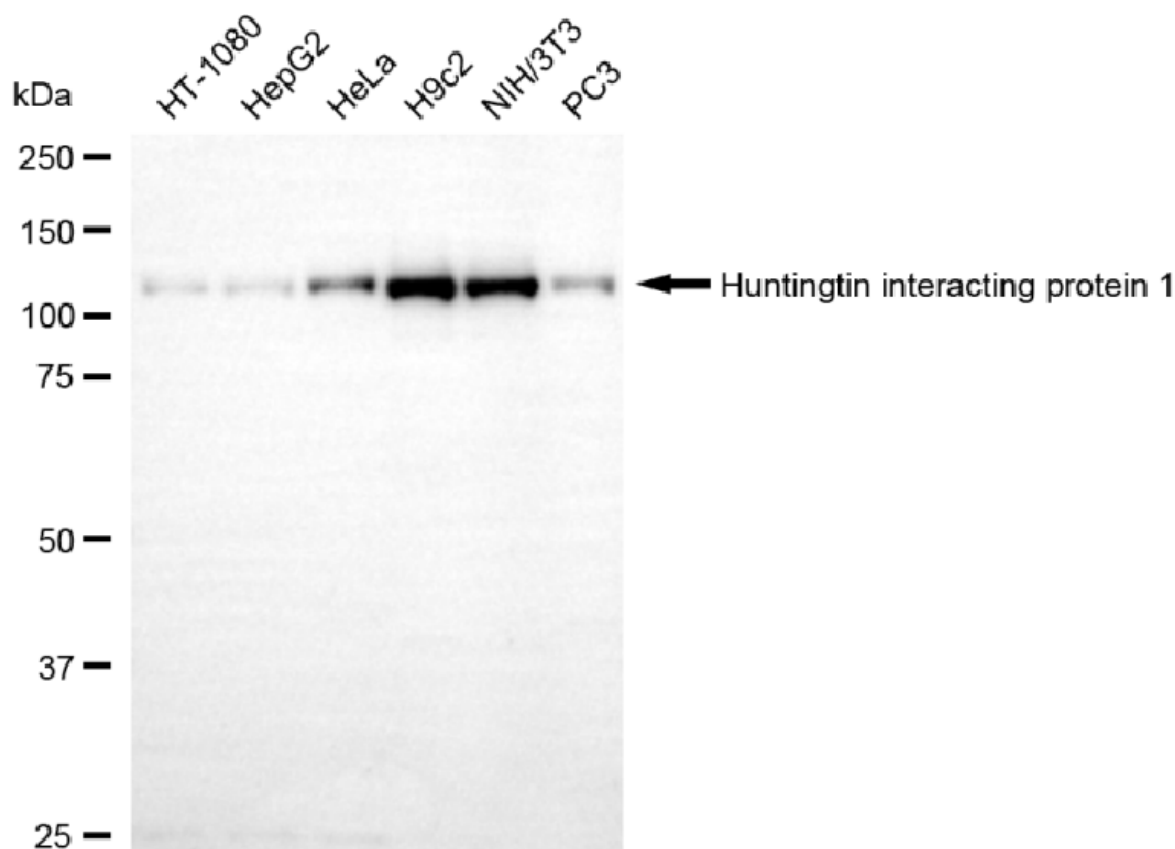
SUPPORT

SUPPORT@GENUINBIOTECH.COM
TEL: +1-540-855-7041

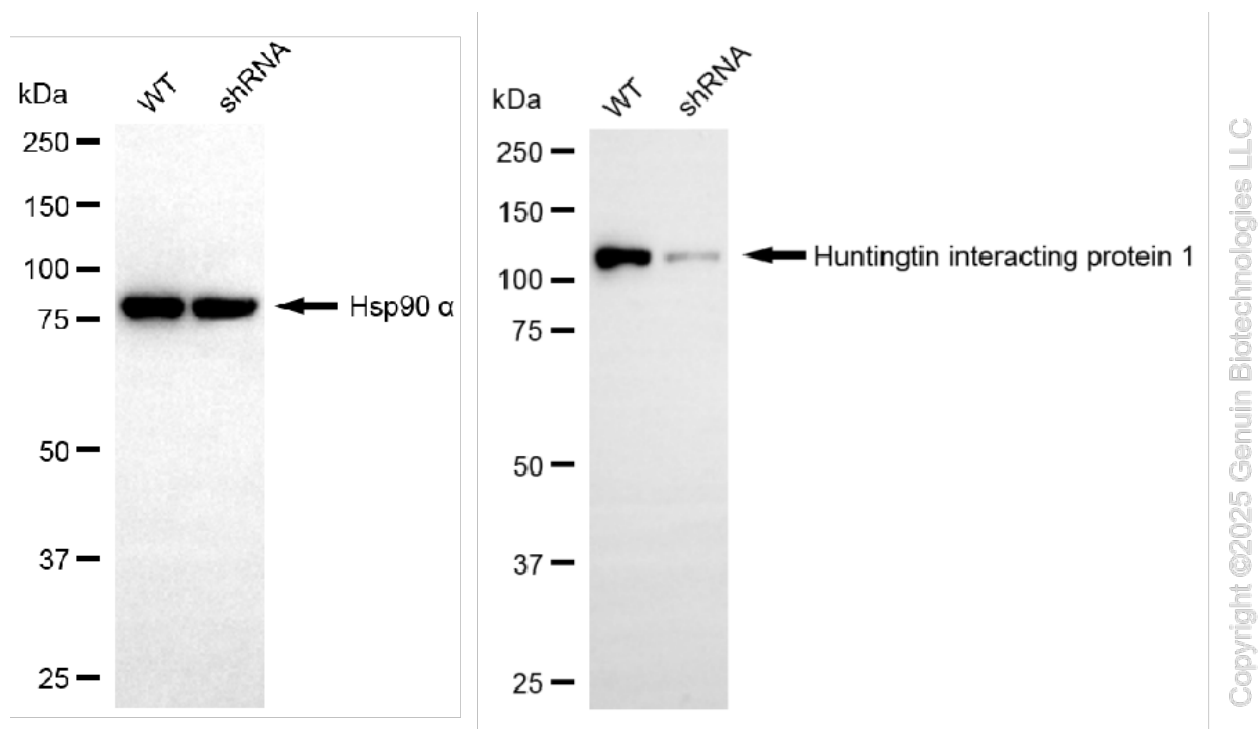
ORDERS

SALES@GENUINBIOTECH.COM
FAX: +1-540-855-7041

WWW.GENUINBIOTECH.COM



Western blotting analysis using anti-huntingtin interacting protein 1 antibody (Cat#61419). Total cell lysates (30 µg) from various cell lines were loaded and separated by SDS-PAGE. The blot was incubated with anti-huntingtin interacting protein 1 antibody (Cat#61419, 1:5,000) and HRP-conjugated goat anti-rabbit secondary antibody (Cat#201, 1:20,000) respectively. Image was developed using FeQ™ ECL Substrate Kit (Cat#226).



Western blotting analysis using anti-huntingtin interacting protein 1 antibody (Cat#61419). Huntingtin interacting protein 1 expression in wild-type (WT) and huntingtin interacting protein 1 (HIP1) shRNA knockdown (KD) HSHC cells with 20 µg of total cell lysates. Hsp90 α serves as a loading control. The blot was incubated with anti-huntingtin interacting protein 1 antibody (Cat#61419, 1:5,000) and HRP-conjugated goat anti-rabbit secondary antibody (Cat#201, 1:20,000) respectively. Image was developed using NaQ™ ECL Substrate Kit (Cat#716).