

KD-Validated Anti-Histone deacetylase 8 Recombinant Rabbit Monoclonal Antibody



Catalog #: 61423

Aliases

HDAC8; Histone Deacetylase 8; HDACL1; KDAC8; RPD3; Protein Deacetylase HDAC8; Histone Deacetylase-Like 1; Protein Deacetylase HDAC8; MRXS6; HD8; WTS; Wilson-Turner X-Linked Mental Retardation Syndrome; EC 3.5.1.98; EC 3.5.1.-; CDA07; CDLS5

Background

Gene Name: HDAC8

NCBI Gene Entry: [55869](#)

UniProt Entry: [Q9BY41](#)

Application Information

Molecular Weight: Predicted, 42 kDa, observed, 42 kDa

Clonality: Rabbit monoclonal antibody

Clone ID: 25GB2495

Species Reactivity: Human

Applications Tested: Western blotting (WB), flow cytometry (FCM), immunocytochemistry (IC)

Immunogen

A synthesized peptide derived from human HDAC8

Isotype

Rabbit IgG

Storage Buffer

Supplied in PBS (pH 7.4) containing 50% glycerol, and 0.02% sodium azide.

Storage

Store at -20 °C for one year.

Recommended Dilutions

Western blotting (WB): 1:4,000-1:20,000

Flow Cytometry (FCM): 1:2,000

Immunocytochemistry (IC): 1:100-1:1,000

Note: This product is for research use only.

SUPPORT

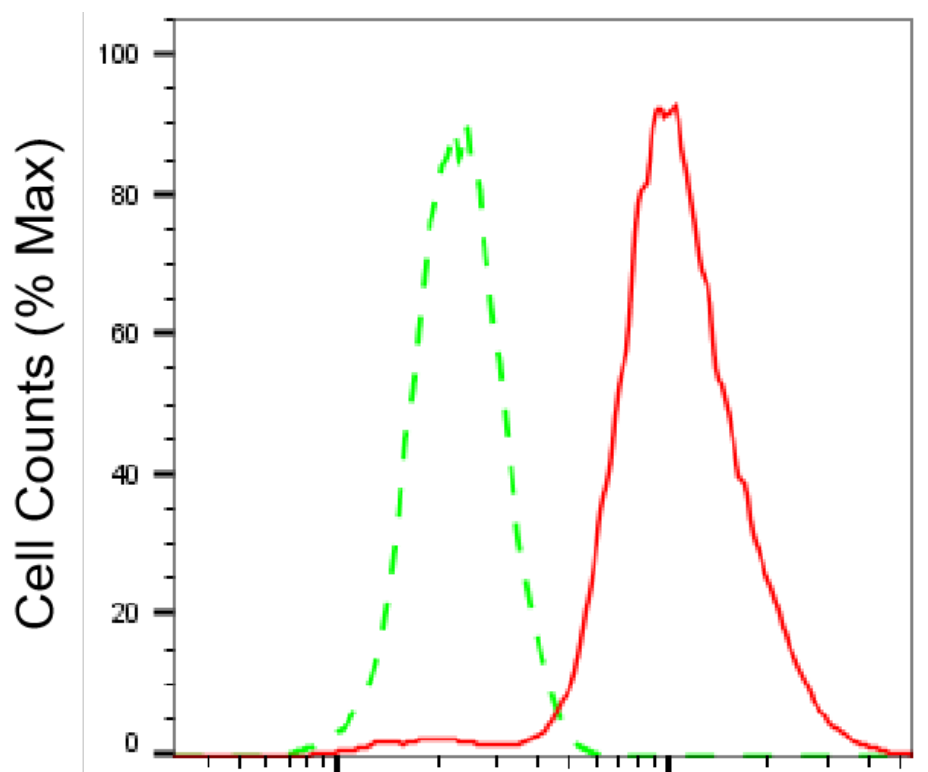
SUPPORT@GENUINBIOTECH.COM
TEL: +1-540-855-7041

ORDERS

SALES@GENUINBIOTECH.COM
FAX: +1-540-855-7041

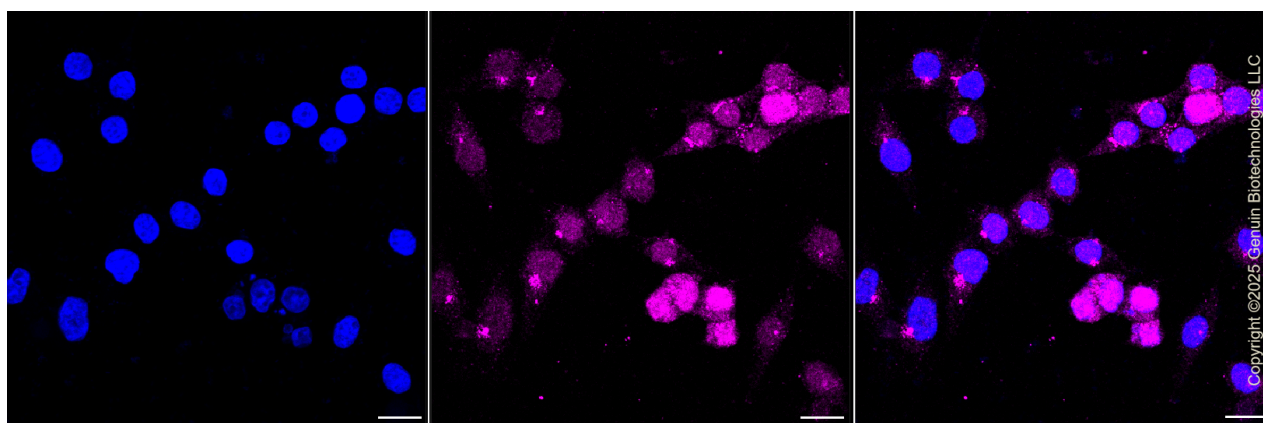
WWW.GENUINBIOTECH.COM

Validation Data



Histone deacetylase 8-Alexa Fluor® 647

Flow cytometric analysis of Histone deacetylase 8 expression in HeLa cells using Histone deacetylase 8 antibody (Cat#61423, 1:2,000). Green, isotype control; red, Histone deacetylase 8.



Immunocytochemical staining of HeLa cells with anti-Histone deacetylase 8 antibody (Cat#61423, 1:1,000). Nuclei were stained blue with DAPI; Histone deacetylase 8 was stained magenta with Alexa Fluor® 647. Images were taken using Leica stellaris 5. Protein abundance based on laser Intensity and smart gain: Medium. Scale bar, 20 μ m.

SUPPORT

SUPPORT@GENUINBIOTECH.COM
TEL: +1-540-855-7041

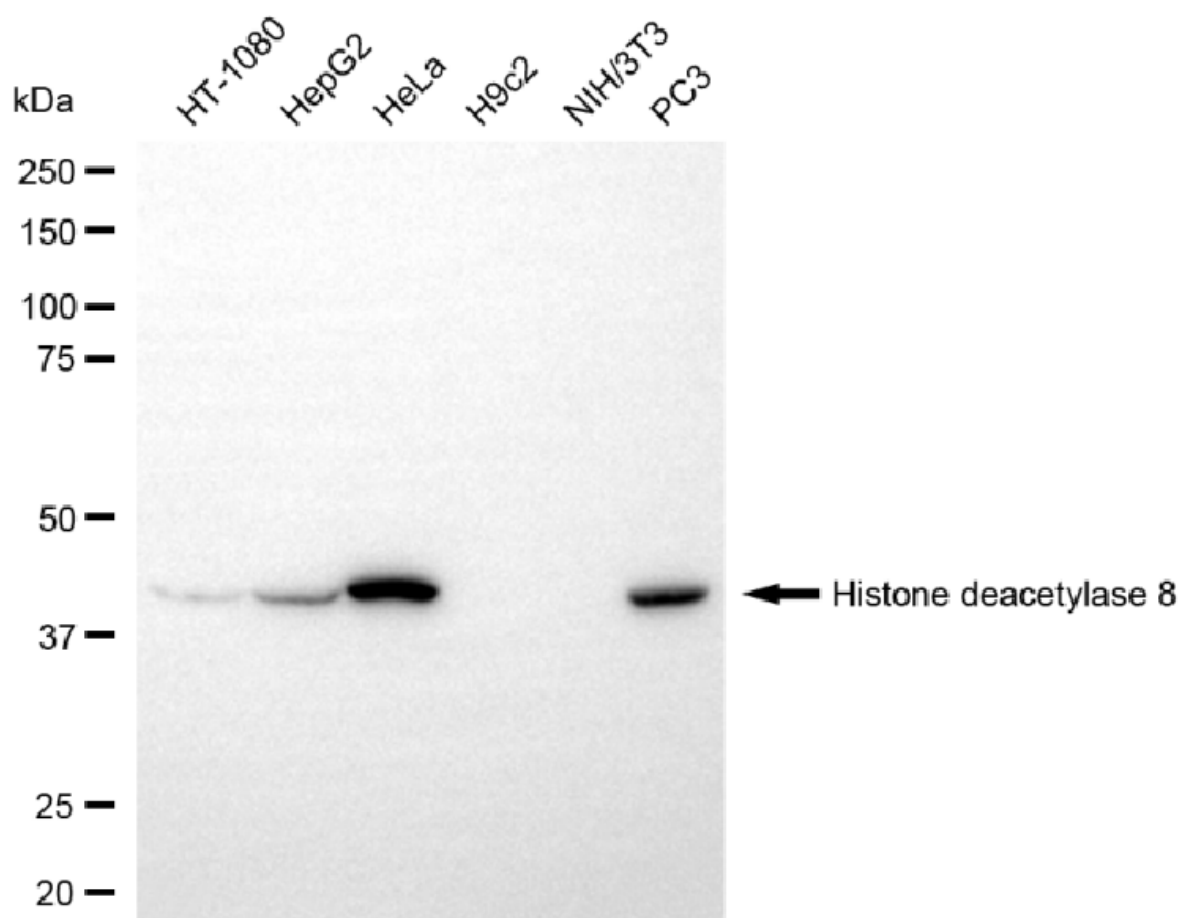
ORDERS

SALES@GENUINBIOTECH.COM
FAX: +1-540-855-7041

WWW.GENUINBIOTECH.COM

KD-Validated Anti-Histone deacetylase 8 Recombinant Rabbit Monoclonal Antibody

PAGE 3



Copyright ©2025 Genuin Biotechnologies LLC

Western blotting analysis using anti-histone deacetylase 8 antibody (Cat#61423). Total cell lysates (30 µg) from various cell lines were loaded and separated by SDS-PAGE. The blot was incubated with anti-histone deacetylase 8 antibody (Cat#61423, 1:20,000) and HRP-conjugated goat anti-rabbit secondary antibody (Cat#201, 1:20,000) respectively. Image was developed using NaQ™ ECL Substrate Kit (Cat#716).

SUPPORT

SUPPORT@GENUINBIOTECH.COM
TEL: +1-540-855-7041

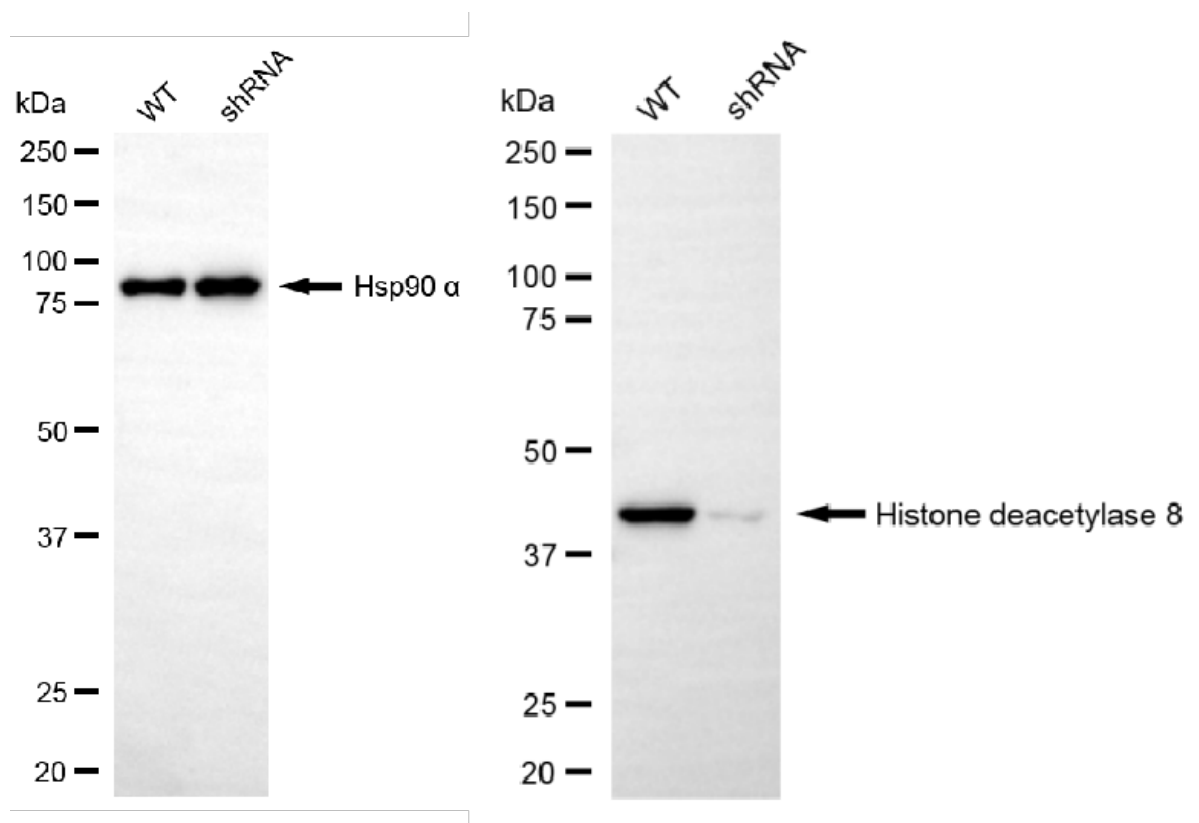
ORDERS

SALES@GENUINBIOTECH.COM
FAX: +1-540-855-7041

WWW.GENUINBIOTECH.COM

KD-Validated Anti-Histone deacetylase 8 Recombinant Rabbit Monoclonal Antibody

PAGE 4



Western blotting analysis using anti-histone deacetylase 8 antibody (Cat#61423). Histone deacetylase 8 expression in wild-type (WT) and histone deacetylase 8 (HDAC8) shRNA knockdown (KD) HeLa cells with 20 μ g of total cell lysates. Hsp90 α serves as a loading control. The blot was incubated with anti-histone deacetylase 8 antibody (Cat#61423, 1:20,000) and HRP-conjugated goat anti-rabbit secondary antibody (Cat#201, 1:20,000) respectively. Image was developed using NaQ™ ECL Substrate Kit (Cat#716).

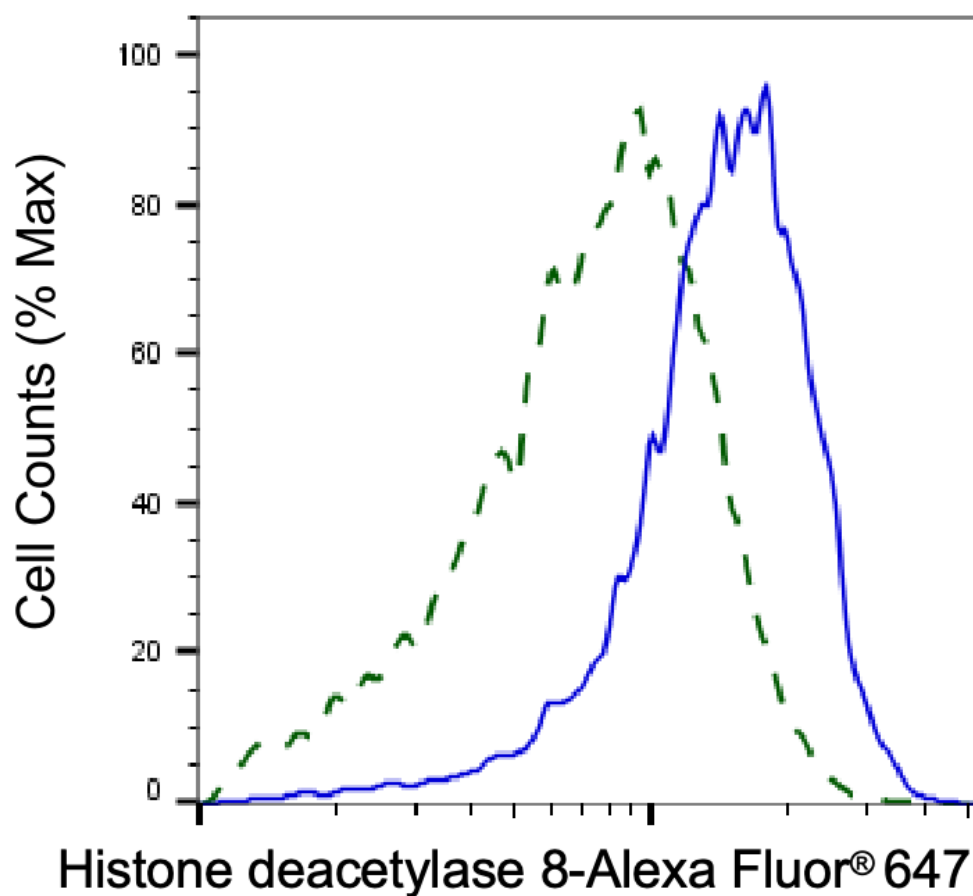
SUPPORT

SUPPORT@GENUINBIOTECH.COM
TEL: +1-540-855-7041

ORDERS

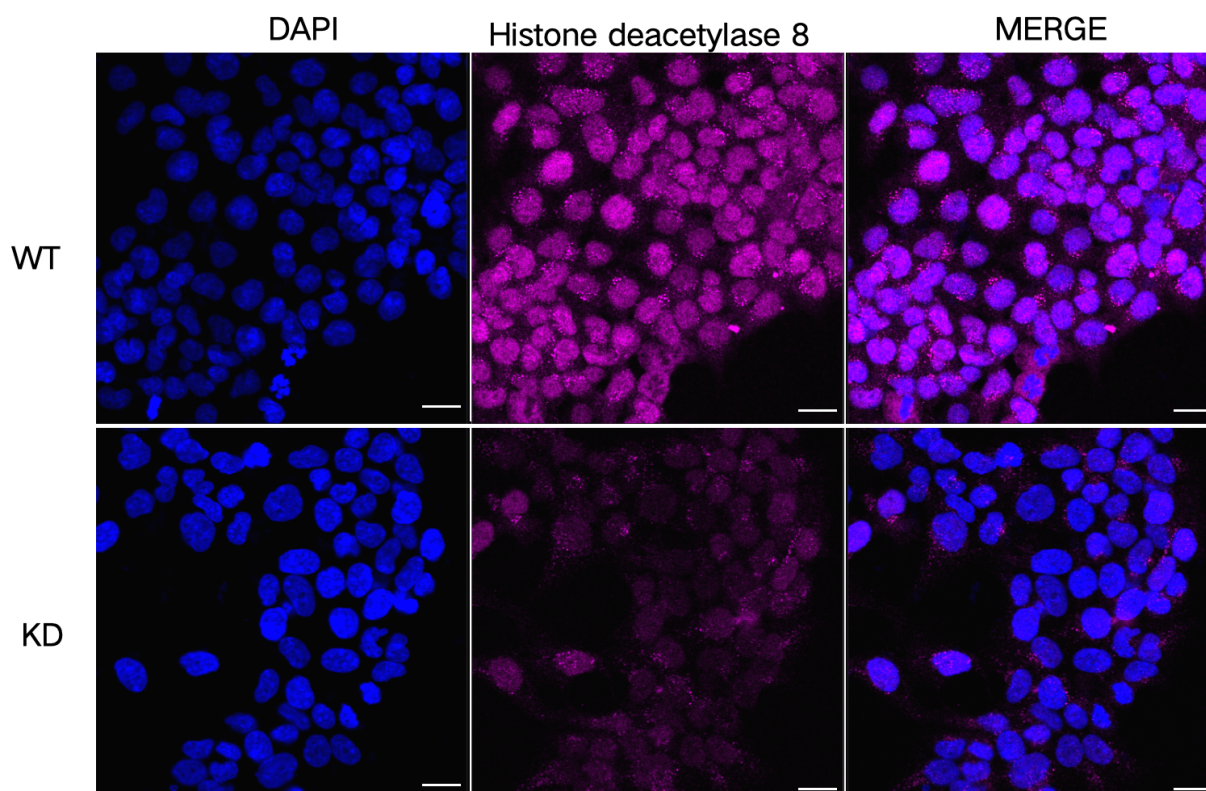
SALES@GENUINBIOTECH.COM
FAX: +1-540-855-7041

WWW.GENUINBIOTECH.COM



Copyright ©2025 Genuin Biotechnologies LLC

Validation of Histone deacetylase 8 knockdown using flow cytometry. Wild-type(WT, Blue) and knockdown(KD, Green) HeLa cells were stained with anti-Histone deacetylase 8 antibody (Cat#61423, 1:2,000) and analyzed using BD flow cytometer.



Copyright ©2025 Genuin Biotechnologies LLC

Immunocytochemical staining of HeLa cells using anti-Histone deacetylase 8 antibody (Cat#61423, 1:1,000), Top panel: wild-type (WT); Bottom panel: Histone deacetylase 8 shRNA knockdown (KD). Nuclei were stained blue with DAPI; Acyl-CoA dehydrogenase short chain was stained magenta with Alexa Fluor® 647. Scale bar, 20 μ m.