

# KD-Validated Anti-Alkaline phosphatase Recombinant Rabbit Monoclonal Antibody



**Catalog #: 61426**

## Aliases

ALPI; Alkaline Phosphatase, Intestinal; IAP; Intestinal Alkaline Phosphatase; Intestinal-Type Alkaline Phosphatase; EC 3.1.3.1; Alkaline Phosphomonoesterase; Glycerophosphatase; Kasahara Isozyme

## Background

Gene Name: ALPI

NCBI Gene Entry: [248](#)

UniProt Entry: [P09923](#)

## Application Information

Molecular Weight: Predicted, 57 kDa, observed, 68 kDa

Clonality: Rabbit monoclonal antibody

Clone ID: 23GB3645

Species Reactivity: Human

Applications Tested: Western blotting (WB), flow cytometry (FCM), immunocytochemistry (IC)

## Immunogen

A synthesized peptide derived from human intestinal alkaline phosphatase

## Isotype

Rabbit IgG

## Storage Buffer

Supplied in PBS (pH 7.4) containing 50% glycerol, and 0.02% sodium azide.

## Storage

Store at -20 °C for one year.

## Recommended Dilutions

Western Blotting (WB): 1:1,000-1:5,000

Flow Cytometry (FCM): 1:2,000

Immunocytochemistry (IC): 1:100-1:1,000

**Note:** This product is for research use only.

---

### SUPPORT

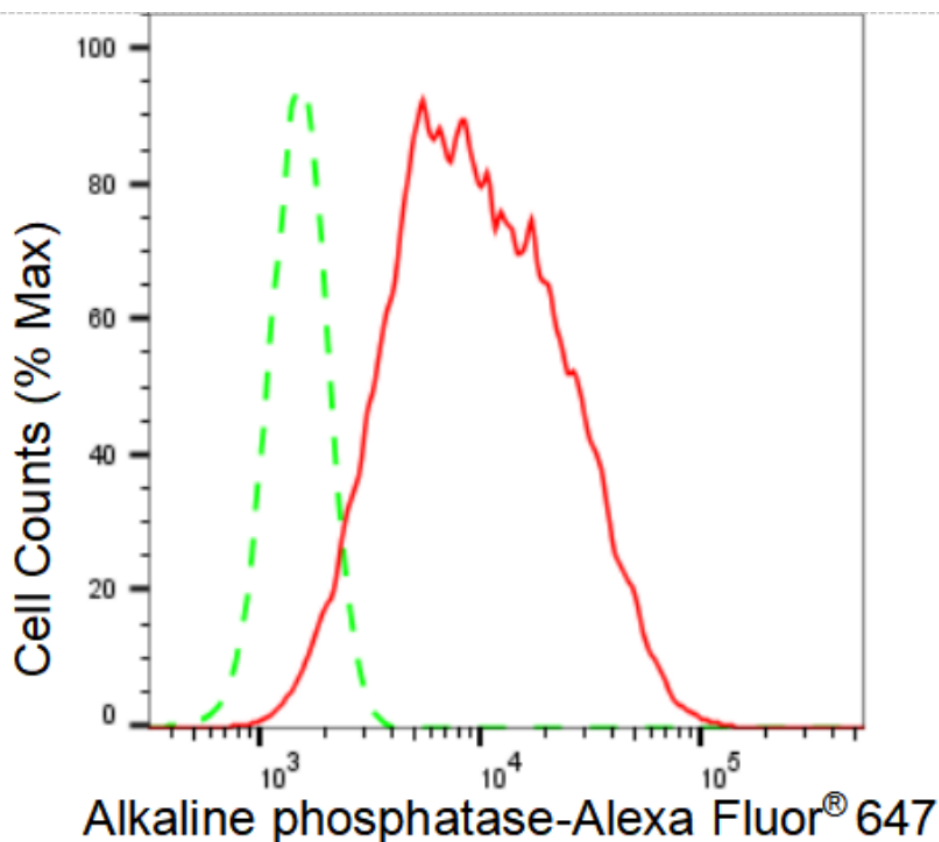
SUPPORT@GENUINBIOTECH.COM  
TEL: +1-540-855-7041

### ORDERS

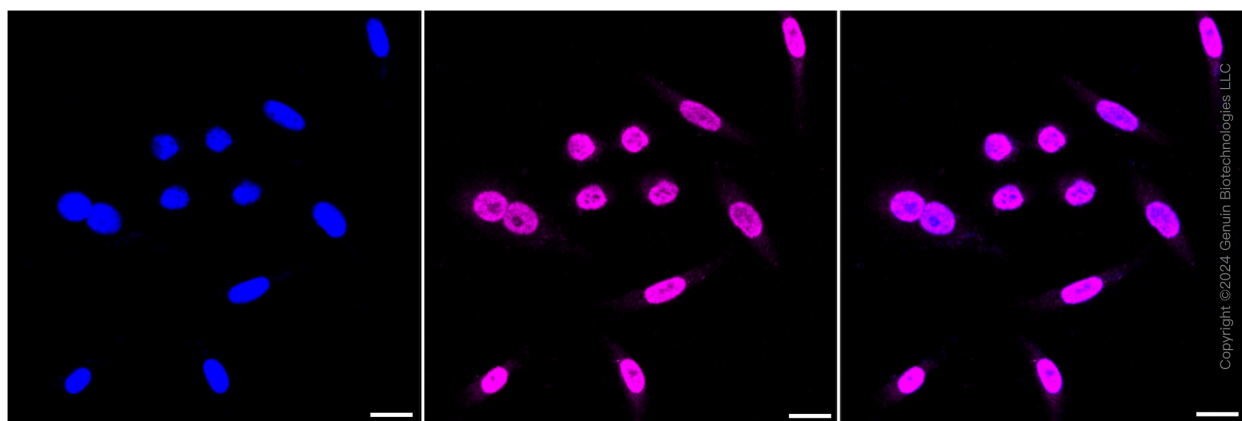
SALES@GENUINBIOTECH.COM  
FAX: +1-540-855-7041

[WWW.GENUINBIOTECH.COM](http://WWW.GENUINBIOTECH.COM)

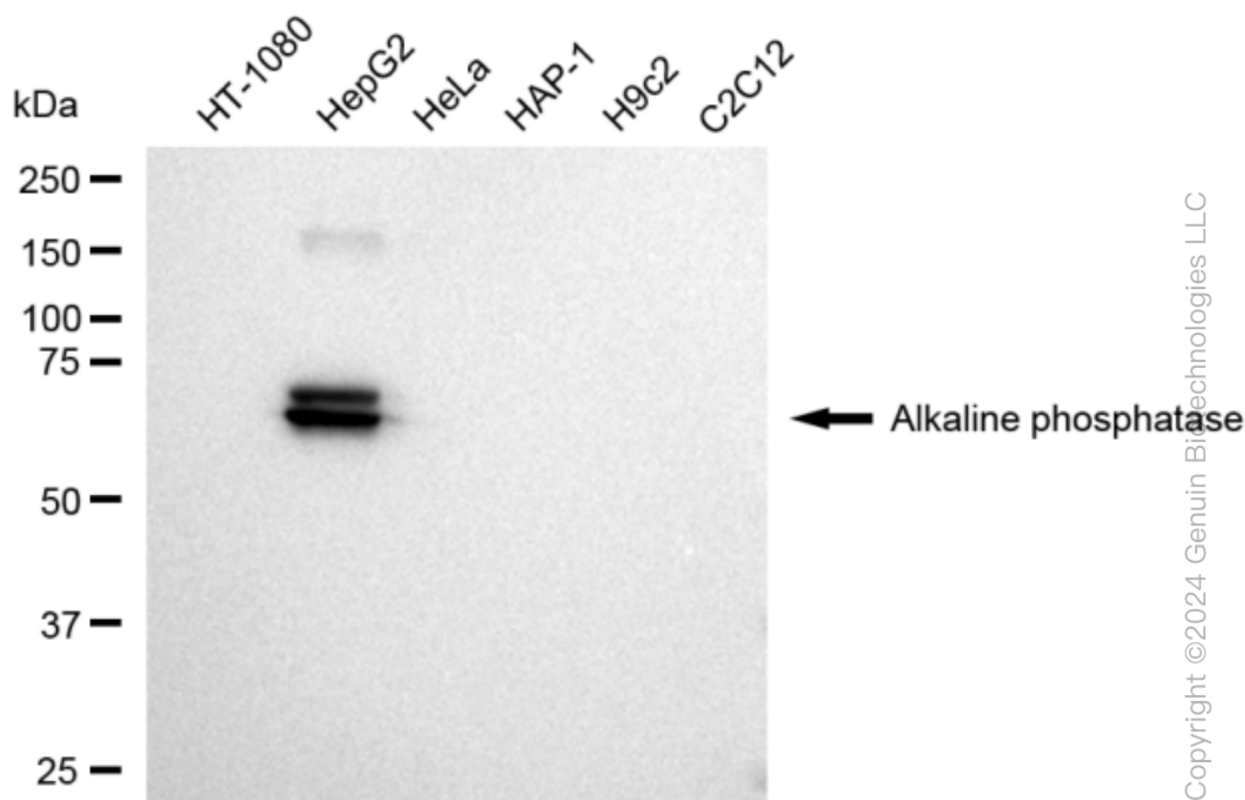
**Validation Data**



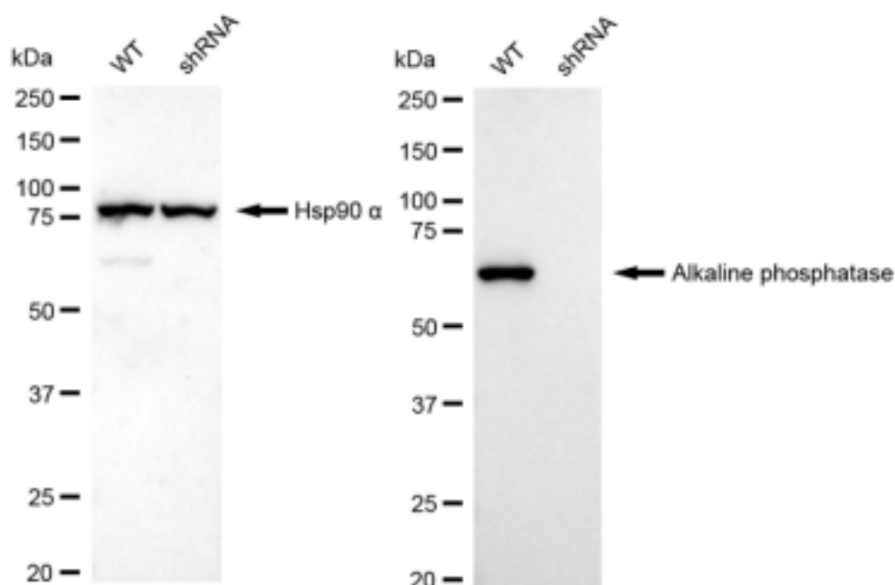
Flow cytometric analysis of Alkaline phosphatase expression in HepG2 cells using Alkaline phosphatase antibody (Cat#61426, 1:2,000). Green, isotype control; red, Alkaline phosphatase.



Immunocytochemical staining of HepG2 cells with Alkaline phosphatase antibody (Cat#61426, 1:1,000). Nuclei were stained blue with DAPI; Alkaline phosphatase was stained magenta with Alexa Fluor® 647. Images were taken using Leica stellaris 5. Protein abundance based on laser Intensity and smart gain: Medium. Scale bar: 20  $\mu$ m.



Western blotting analysis using anti-Alkaline phosphatase antibody (Cat#61426). Total cell lysates (30 µg) from various cell lines were loaded and separated by SDS-PAGE. The blot was incubated with anti-Alkaline phosphatase antibody (Cat#61426, 1:5,000) and HRP-conjugated goat anti-rabbit secondary antibody (Cat#201, 1:20,000) respectively. Image was developed using FeQ™ ECL Substrate Kit (Cat#226).

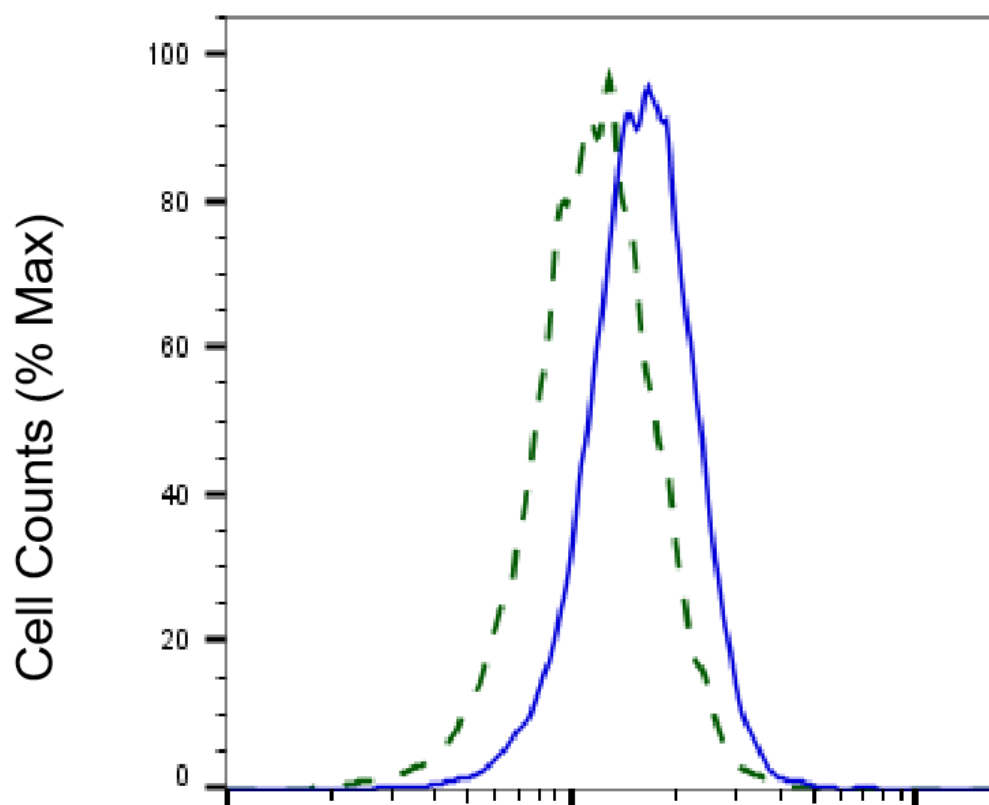


Western blotting analysis using anti-Alkaline phosphatase antibody (Cat#61426). Alkaline

## KD-Validated Anti-Alkaline phosphatase Recombinant Rabbit Monoclonal Antibody

PAGE 4

phosphatase expression in wild type (WT) and Alkaline phosphatase shRNA knockdown (KD) HeLa cells with 30 µg of total cell lysates. Hsp90 α serves as a loading control. The blot was incubated with anti-Alkaline phosphatase antibody (Cat#61426, 1:5,000) and HRP-conjugated goat anti-rabbit secondary antibody (Cat#201, 1:20,000) respectively. Image was developed using FeQ™ ECL Substrate Kit (Cat#226).



Copyright ©2025 Genuin Biotechnologies LLC

### Alkaline phosphatase-Alexa Fluor® 647

Validation of Alkaline phosphatase knockdown using flow cytometry. Wild-type(WT, Blue) and knockdown(KD, Green) HeLa cells were stained with anti-Alkaline phosphatase antibody (Cat#61426, 1:2,000) and analyzed using BD flow cytometer.

#### SUPPORT

SUPPORT@GENUINBIOTECH.COM  
TEL: +1-540-855-7041

#### ORDERS

SALES@GENUINBIOTECH.COM  
FAX: +1-540-855-7041

WWW.GENUINBIOTECH.COM