

KD-Validated Anti-ABCE1 Recombinant Rabbit Monoclonal Antibody



Catalog #: 61427

Aliases

ABCE1; ATP Binding Cassette Subfamily E Member 1; RLI; RNASEL1; RNASELI; RNS4I; OABP; RLI1; ATP-Binding Cassette, Sub-Family E (OABP), Member 1; ATP-Binding Cassette Sub-Family E Member 1; 2'-5'-Oligoadenylate-Binding Protein; Ribonuclease 4 Inhibitor; RNase L Inhibitor 1; HuHP68; Ribonuclease L (2',5'-Oligoisoadenylate Synthetase-Dependent) Inhibitor; RNase L Inhibitor; EC 3.6.5.-; ABC38

Background

Gene Name: ABCE1

NCBI Gene Entry: [6059](#)

UniProt Entry: [P61221](#)

Application Information

Molecular Weight: Predicted, 67 kDa, observed, 67 kDa

Clonality: Rabbit monoclonal antibody

Clone ID: 23GB3605

Species Reactivity: Human, mouse, rat

Applications Tested: Western blotting (WB), flow cytometry (FCM), immunocytochemistry (IC)

Immunogen

A synthesized peptide derived from human ABCE1

Isotype

Rabbit IgG

Storage Buffer

Supplied in PBS (pH 7.4) containing 50% glycerol, and 0.02% sodium azide.

Storage

Store at -20 °C for one year.

Recommended Dilutions

Western Blotting (WB): 1:1,000-1:5,000

Flow Cytometry (FCM): 1:2,000

Immunocytochemistry (IC): 1:100-1:1,000

SUPPORT

SUPPORT@GENUINBIOTECH.COM
TEL: +1-540-855-7041

ORDERS

SALES@GENUINBIOTECH.COM
FAX: +1-540-855-7041

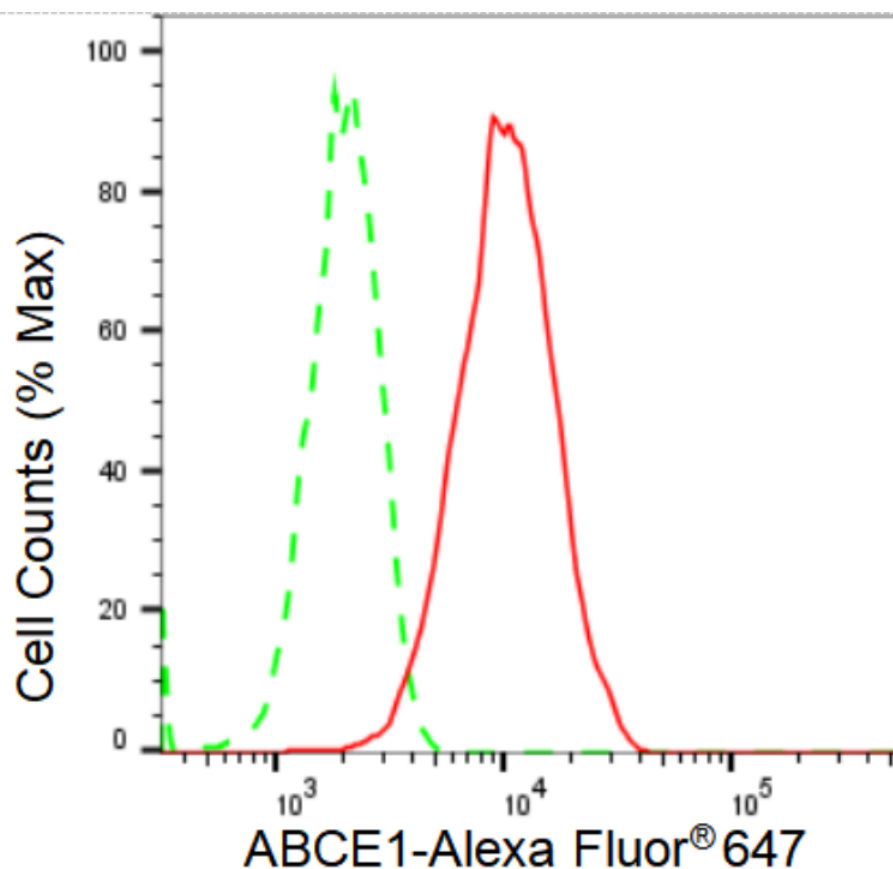
WWW.GENUINBIOTECH.COM

KD-Validated Anti-ABCE1 Recombinant Rabbit Monoclonal Antibody

PAGE 2

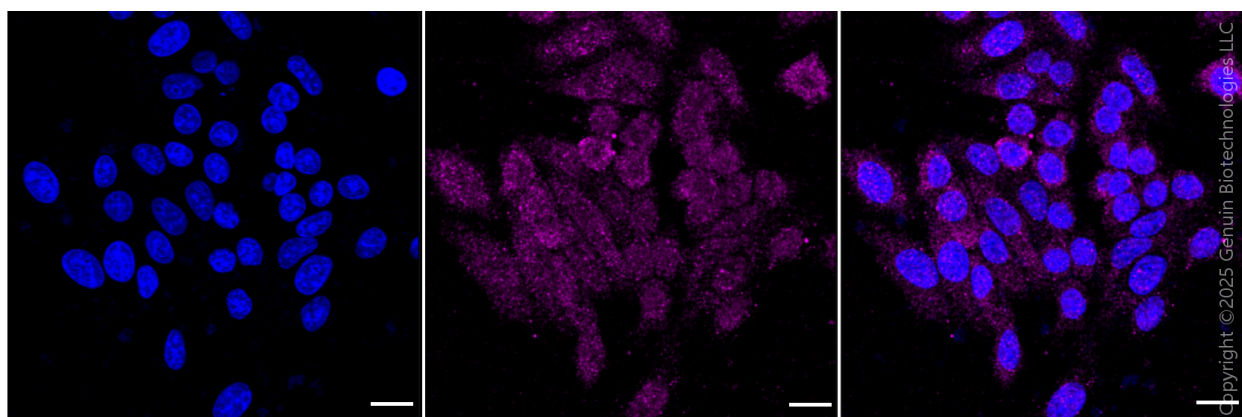
Note: This product is for research use only.

Validation Data



Copyright ©2024 Genuin Biotechnologies LLC

Flow cytometric analysis of ABCE1 expression in C2C12 cells using ABCE1 antibody (Cat#61427, 1:2000). Green, isotype control; red, ABCE1.



Copyright ©2025 Genuin Biotechnologies LLC

Immunocytochemical staining of HepG2 cells with anti-ABCE1 antibody (Cat#61427, 1:1000). Nuclei were stained blue with DAPI; ABCE1 was stained magenta with Alexa Fluor® 647. Images were taken using Leica stellaris 5. Protein abundance based on laser Intensity and smart gain: Medium. Scale bar, 20 µm.

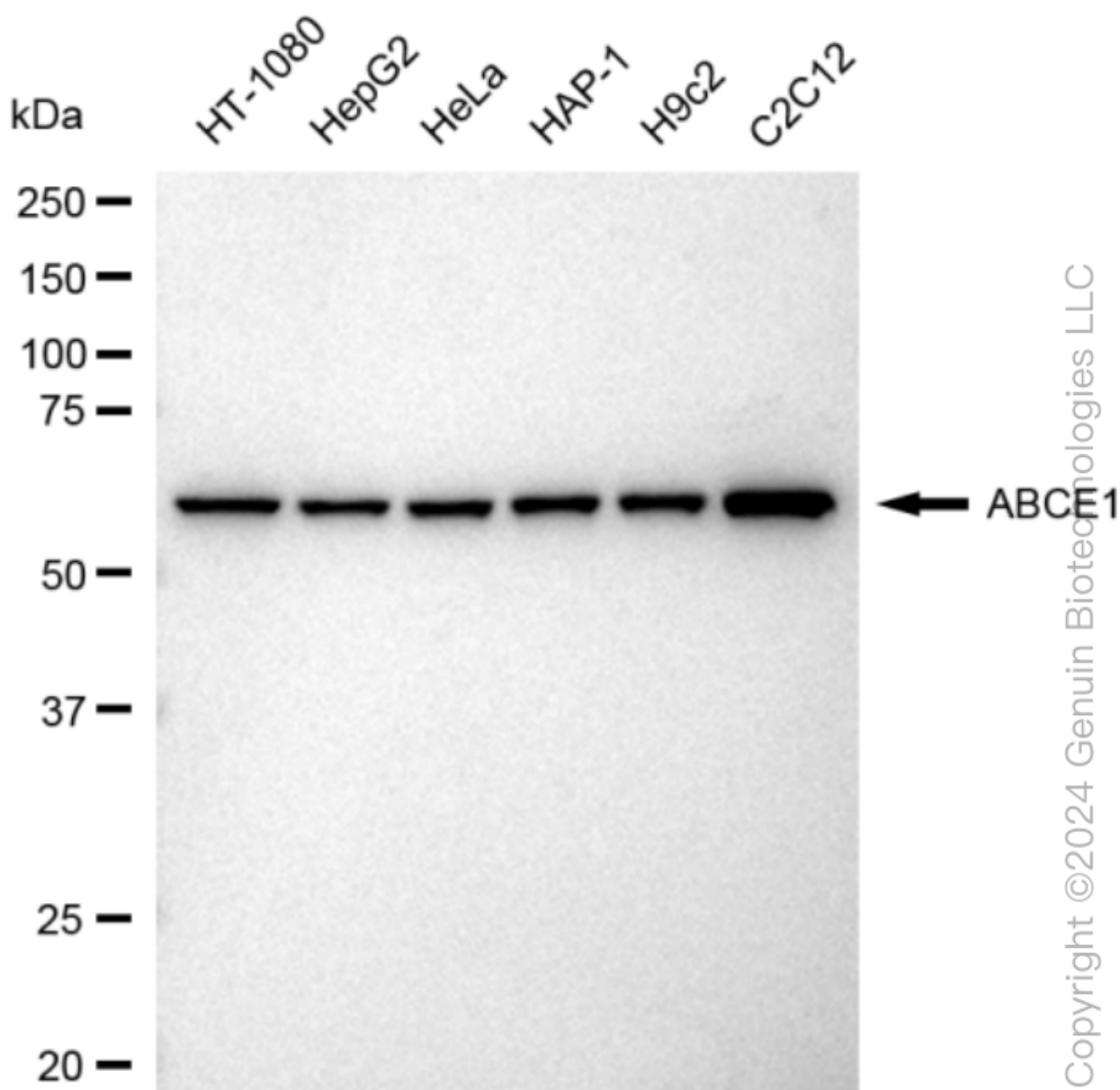
SUPPORT

SUPPORT@GENUINBIOTECH.COM
TEL: +1-540-855-7041

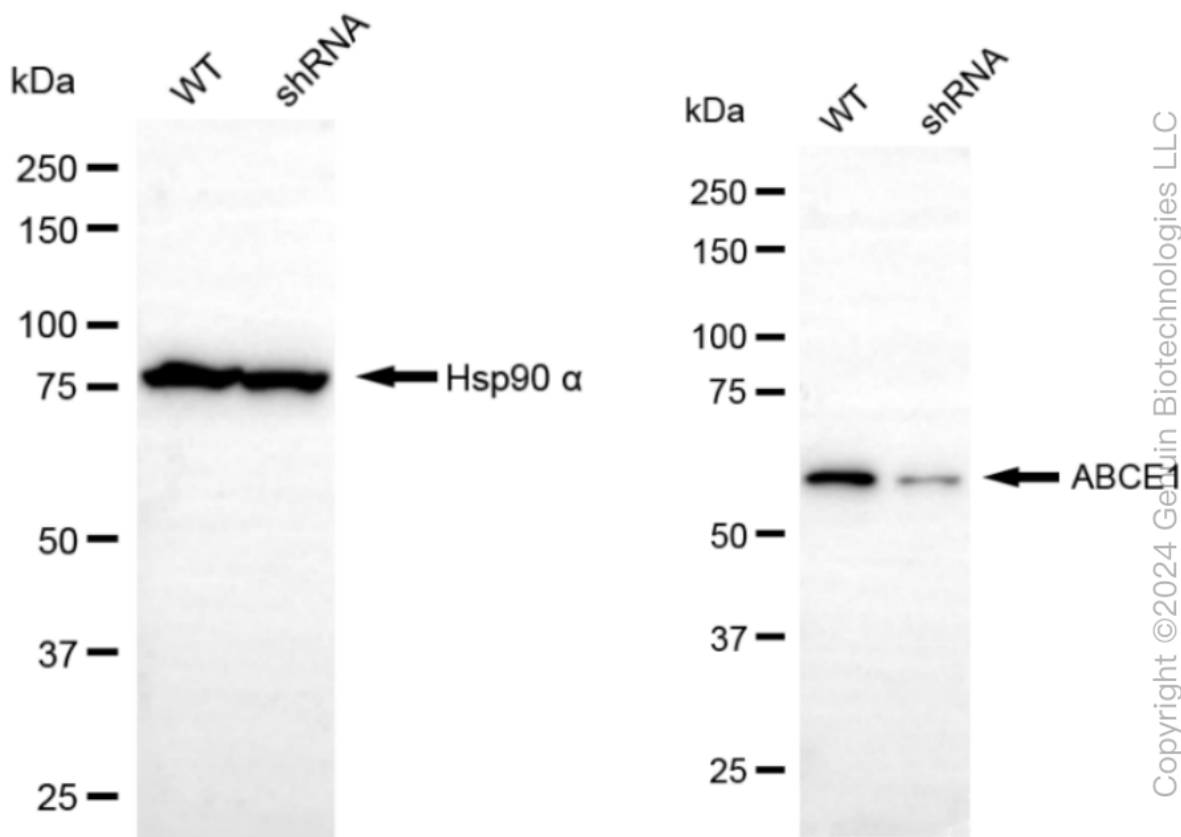
ORDERS

SALES@GENUINBIOTECH.COM
FAX: +1-540-855-7041

WWW.GENUINBIOTECH.COM



Western blotting analysis using anti-ABCE1 antibody (Cat#61427). Total cell lysates (30 μ g) from various cell lines were loaded and separated by SDS-PAGE. The blot was incubated with anti-ABCE1 antibody (Cat#61427, 1:5,000) and HRP-conjugated goat anti-rabbit secondary antibody (Cat#201, 1:20,000) respectively. Image was developed using FeQ™ ECL Substrate Kit (Cat#226).



Western blotting analysis using anti-ABCE1 antibody (Cat#61427). ABCE1 expression in wild type (WT) and ABCE1 shRNA knockdown (KD) HeLa cells with 30 µg of total cell lysates. Hsp90 α serves as a loading control. The blot was incubated with anti-ABCE1 antibody (Cat#61427, 1:5,000) and HRP-conjugated goat anti-rabbit secondary antibody (Cat#201, 1:20,000) respectively. Image was developed using FeQ™ ECL Substrate Kit (Cat#226).