

KD-Validated Anti-ARHGEF2 Recombinant Rabbit Monoclonal Antibody



Catalog #: 61432

Aliases

ARHGEF2; Rho/Rac Guanine Nucleotide Exchange Factor 2; GEF-H1; LFP40; Rho/Rac Guanine Nucleotide Exchange Factor (GEF); KIAA0651; GEFH1; P40; Rho Guanine Nucleotide Exchange Factor; Proliferating Cell Nucleolar Antigen P40; Guanine Nucleotide Exchange Factor H1; Microtubule-Regulated Rho-GEF; Lfc; NEDMHM; GEF; LFC

Background

Gene Name: ARHGEF2

NCBI Gene Entry: [9181](#)

UniProt Entry: [Q92974](#)

Application Information

Molecular Weight: Predicted, 111 kDa, observed, 112 kDa

Clonality: Rabbit monoclonal antibody

Clone ID: 23GB3675

Species Reactivity: Human, mouse, rat

Applications Tested: Western blotting (WB), flow cytometry (FCM), immunocytochemistry (IC)

Immunogen

A synthesized peptide derived from human GEF H1

Isotype

Rabbit IgG

Storage Buffer

Supplied in PBS (pH 7.4) containing 50% glycerol, and 0.02% sodium azide.

Storage

Store at -20 °C for one year.

Recommended Dilutions

Western Blotting (WB): 1:1,000-1:5,000

Flow Cytometry (FCM): 1:2,000

Immunocytochemistry (IC): 1:100-1:1,000

SUPPORT

SUPPORT@GENUINBIOTECH.COM
TEL: +1-540-855-7041

ORDERS

SALES@GENUINBIOTECH.COM
FAX: +1-540-855-7041

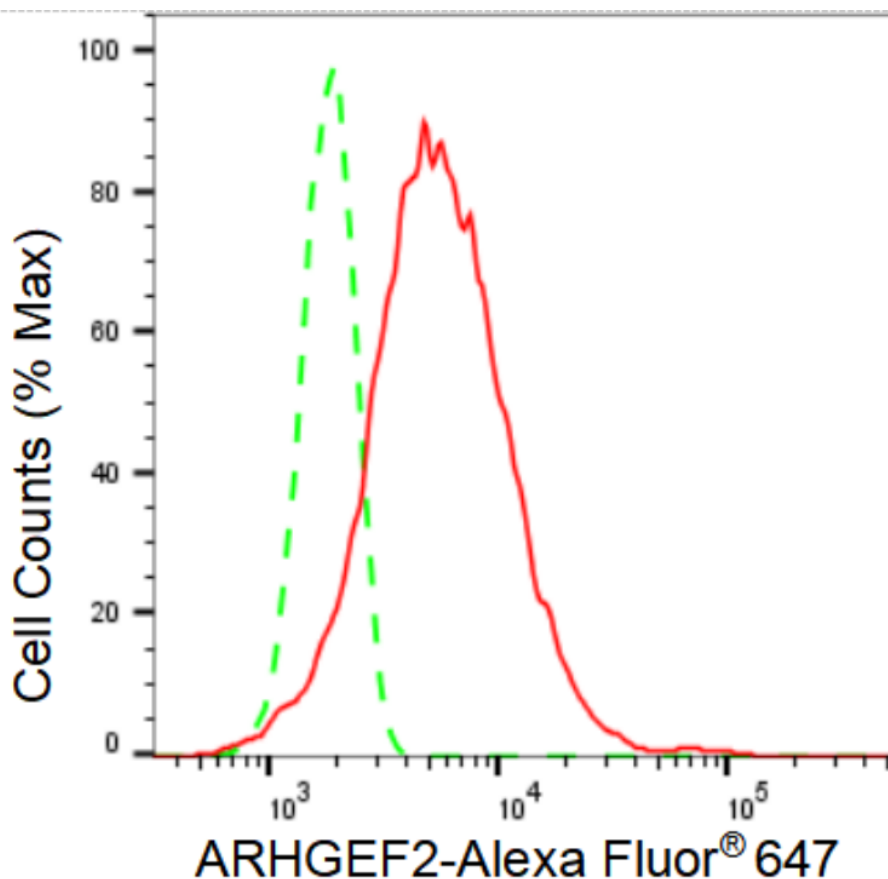
WWW.GENUINBIOTECH.COM

KD-Validated Anti-ARHGEF2 Recombinant Rabbit Monoclonal Antibody

PAGE 2

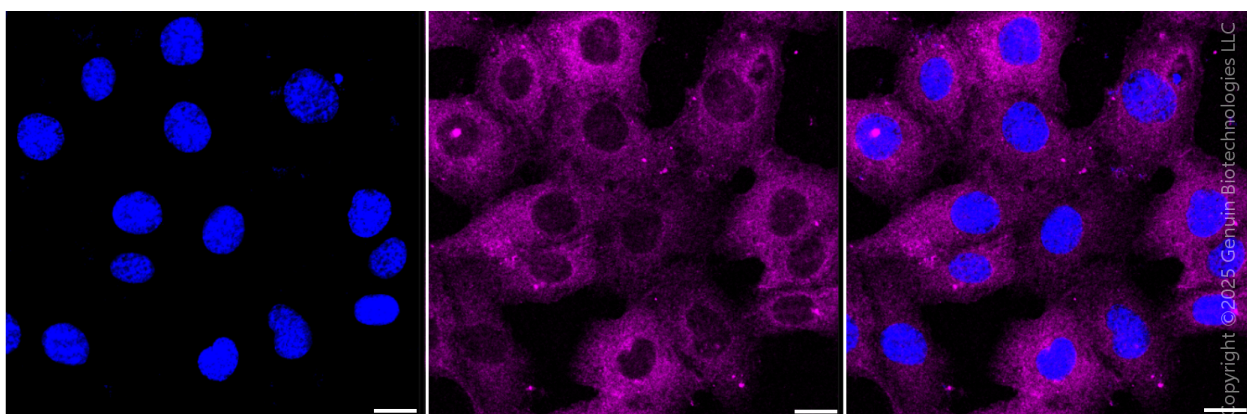
Note: This product is for research use only.

Validation Data



Copyright ©2024 Genuin Biotechnologies LLC

Flow cytometric analysis of ARHGEF2 expression in HT-1080 cells using ARHGEF2 antibody (Cat#61432, 1:2,000). Green, isotype control; red, ARHGEF2.



Copyright ©2025 Genuin Biotechnologies LLC

SUPPORT

SUPPORT@GENUINBIOTECH.COM
TEL: +1-540-855-7041

ORDERS

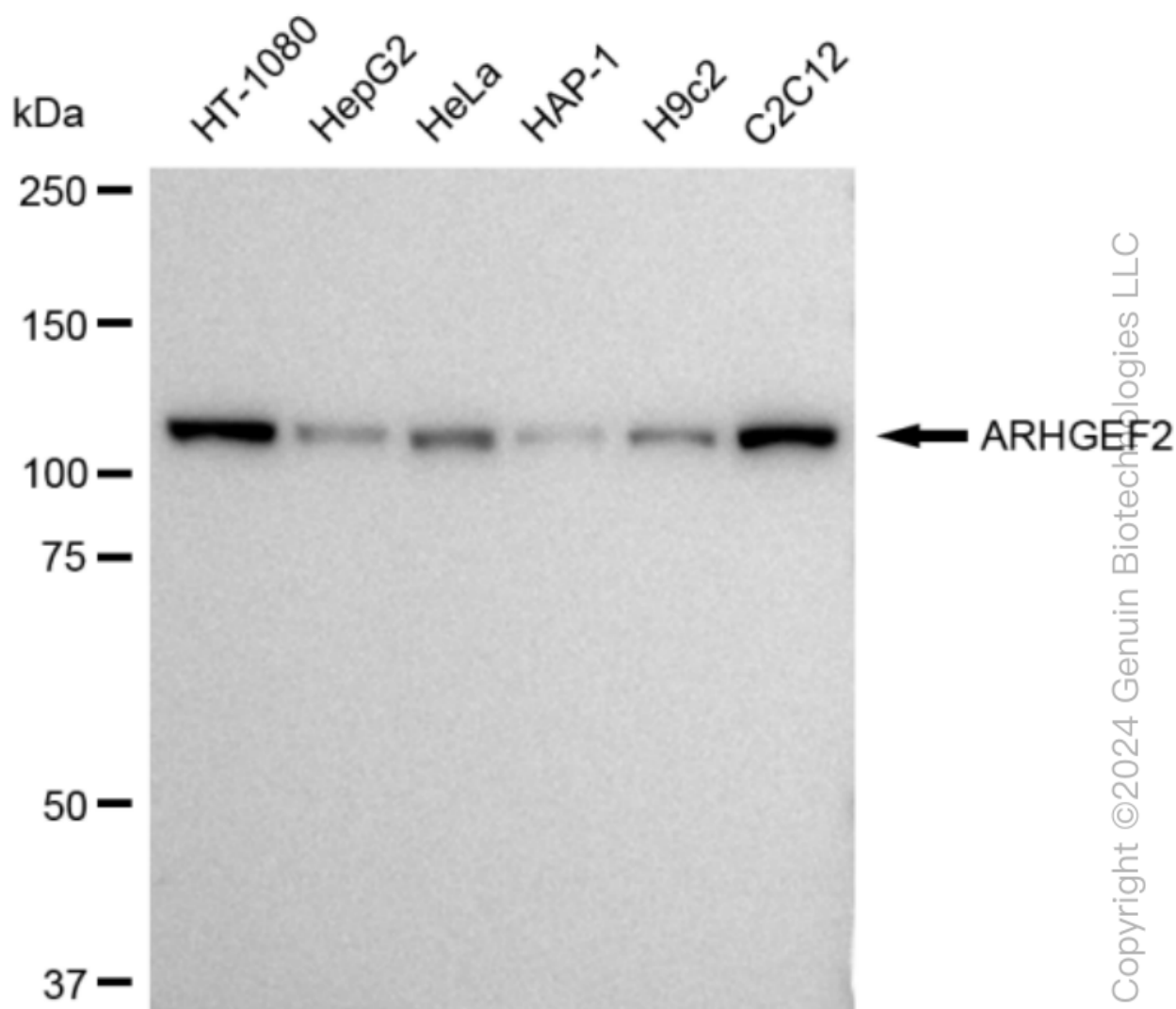
SALES@GENUINBIOTECH.COM
FAX: +1-540-855-7041

WWW.GENUINBIOTECH.COM

KD-Validated Anti-ARHGEF2 Recombinant Rabbit Monoclonal Antibody

PAGE 3

and smart gain: Medium. Scale bar, 20 μ m.



Western blotting analysis using anti-ARHGEF2 antibody (Cat#61432). Total cell lysates (30 μ g) from various cell lines were loaded and separated by SDS-PAGE. The blot was incubated with anti-ARHGEF2 antibody (Cat#61432, 1:5,000) and HRP-conjugated goat anti-rabbit secondary antibody (Cat#201, 1:20,000) respectively. Image was developed using FeQ™ ECL Substrate Kit (Cat#226).

SUPPORT

SUPPORT@GENUINBIOTECH.COM
TEL: +1-540-855-7041

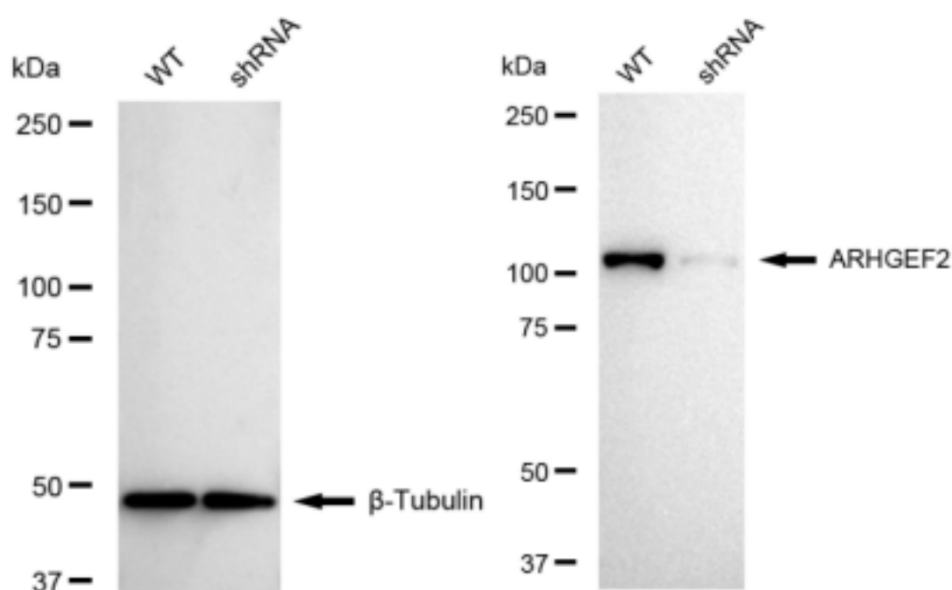
ORDERS

SALES@GENUINBIOTECH.COM
FAX: +1-540-855-7041

WWW.GENUINBIOTECH.COM

KD-Validated Anti-ARHGEF2 Recombinant Rabbit Monoclonal Antibody

PAGE 4



Copyright ©2024 Genuin Biotechnologies LLC

Western blotting analysis using anti-ARHGEF2 antibody (Cat#61432). ARHGEF2 expression in wild type (WT) and ARHGEF2 shRNA knockdown (KD) HeLa cells with 30 μ g of total cell lysates. β -Tubulin serves as a loading control. The blot was incubated with anti-ARHGEF2 antibody (Cat#61432, 1:5,000) and HRP-conjugated goat anti-rabbit secondary antibody (Cat#201, 1:20,000) respectively. Image was developed using FeQTM ECL Substrate Kit (Cat#226).

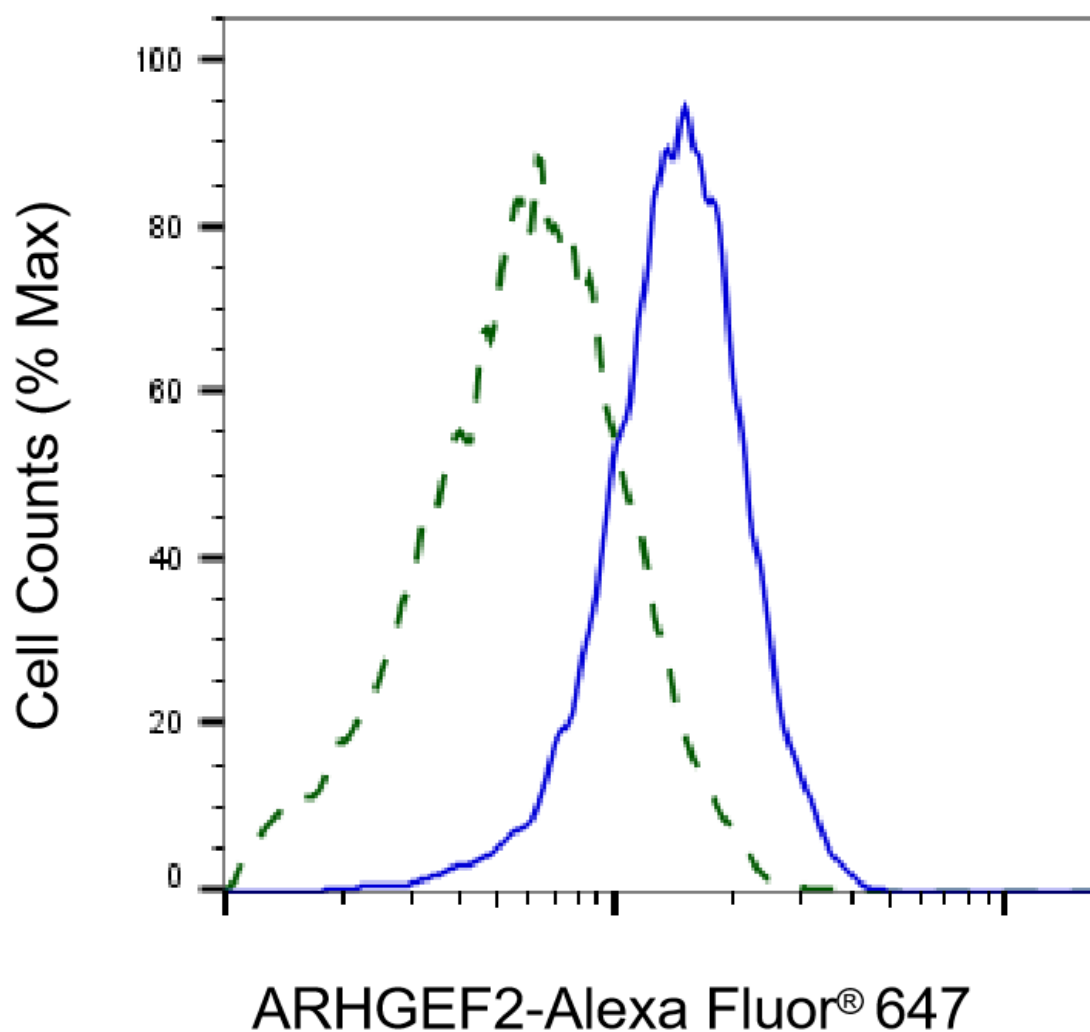
SUPPORT

SUPPORT@GENUINBIOTECH.COM
TEL: +1-540-855-7041

ORDERS

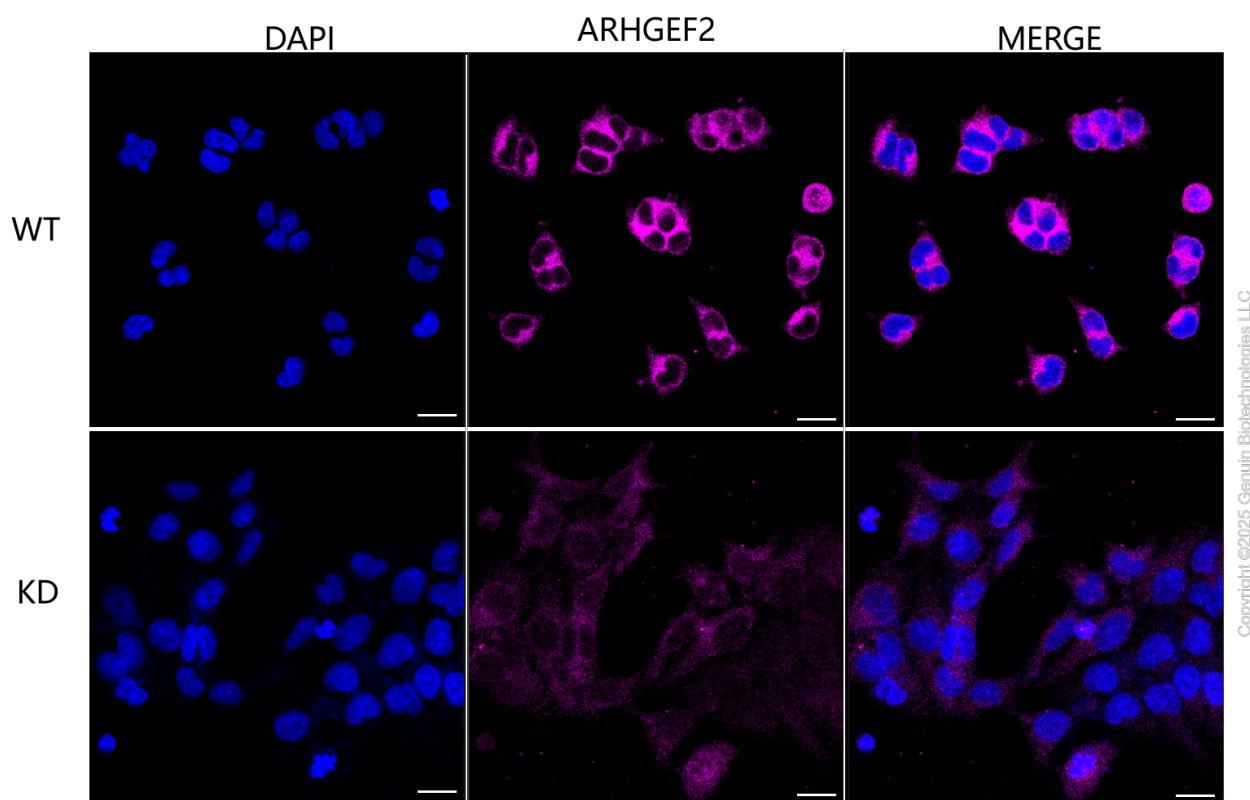
SALES@GENUINBIOTECH.COM
FAX: +1-540-855-7041

WWW.GENUINBIOTECH.COM



Copyright ©2025 Genuin Biotechnologies LLC

Validation of ARHGEF2 knockdown using flow cytometry. Wild-type(WT, Blue) and knockdown(KD, Green) HeLa cells were stained with anti-ARHGEF2 antibody (Cat#61432, 1:2,000) and analyzed using BD flow cytometer.



Immunocytochemical staining of HeLa cells using anti-ARHGEF2 antibody (Cat#61432, 1:1,000), Top panel: wild-type (WT); Bottom panel: ARHGEF2 shRNA knockdown (KD). Nuclei were stained blue with DAPI; ARHGEF2 was stained magenta with Alexa Fluor® 647. Scale bar, 20 μ m.