

# KD-Validated Anti-Casein kinase 2 beta Recombinant Rabbit Monoclonal Antibody



**Catalog #: 61434**

## Aliases

CSNK2B; Casein Kinase 2 Beta; Casein Kinase 2, Beta Polypeptide; Casein Kinase II Subunit Beta; Protein G5a; CK II Beta; Phosvitin; Ckb1; Ckb2; CK2N; G5A; Alternative Name: G5a, Phosvitin; Casein Kinase II Beta Subunit; CSNK2B-LY6G5B-1072; CSNK2B-LY6G5B-1103; CSNK2B-LY6G5B-532; CSNK2B-LY6G5B-560; CSNK2B-LY6G5B-562; POBINDS; CSK2B; CK2B; CKB1; CKB2

## Background

Gene Name: CSNK2B

NCBI Gene Entry: [1460](#)

UniProt Entry: [P67870](#)

## Application Information

Molecular Weight: Predicted, 25 kDa, observed, 25 kDa

Clonality: Rabbit monoclonal antibody

Clone ID: 23GB3730

Species Reactivity: Human, mouse, rat

Applications Tested: Western blotting (WB), immunocytochemistry (IC)

## Immunogen

A synthesized peptide derived from human Casein Kinase 2 beta

## Isotype

Rabbit IgG

## Storage Buffer

Supplied in PBS (pH 7.4) containing 50% glycerol, and 0.02% sodium azide.

## Storage

Store at -20 °C for one year.

## Recommended Dilutions

Western Blotting (WB): 1:1,000-1:5,000

Immunocytochemistry (IC): 1:100-1:1,000

---

### SUPPORT

SUPPORT@GENUINBIOTECH.COM  
TEL: +1-540-855-7041

### ORDERS

SALES@GENUINBIOTECH.COM  
FAX: +1-540-855-7041

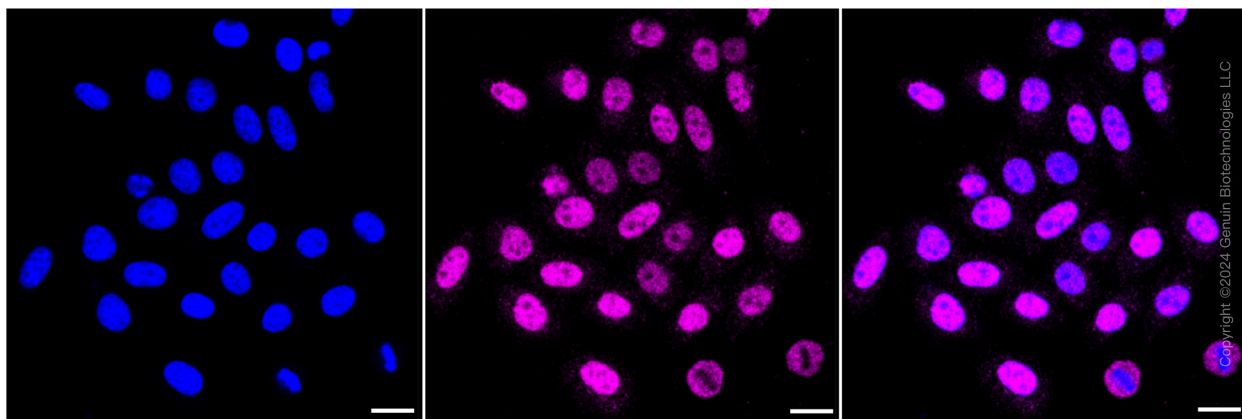
[WWW.GENUINBIOTECH.COM](http://WWW.GENUINBIOTECH.COM)

## KD-Validated Anti-Casein kinase 2 beta Recombinant Rabbit Monoclonal Antibody

PAGE 2

**Note:** This product is for research use only.

### Validation Data



Immunocytochemical staining of HepG2 cells with Casein kinase 2 beta antibody (Cat#61434, 1:1,000). Nuclei were stained blue with DAPI; Casein kinase 2 beta was stained magenta with Alexa Fluor® 647. Images were taken using Leica stellaris 5. Protein abundance based on laser Intensity and smart gain: Medium. Scale bar: 20  $\mu$ m.

---

#### SUPPORT

SUPPORT@GENUINBIOTECH.COM  
TEL: +1-540-855-7041

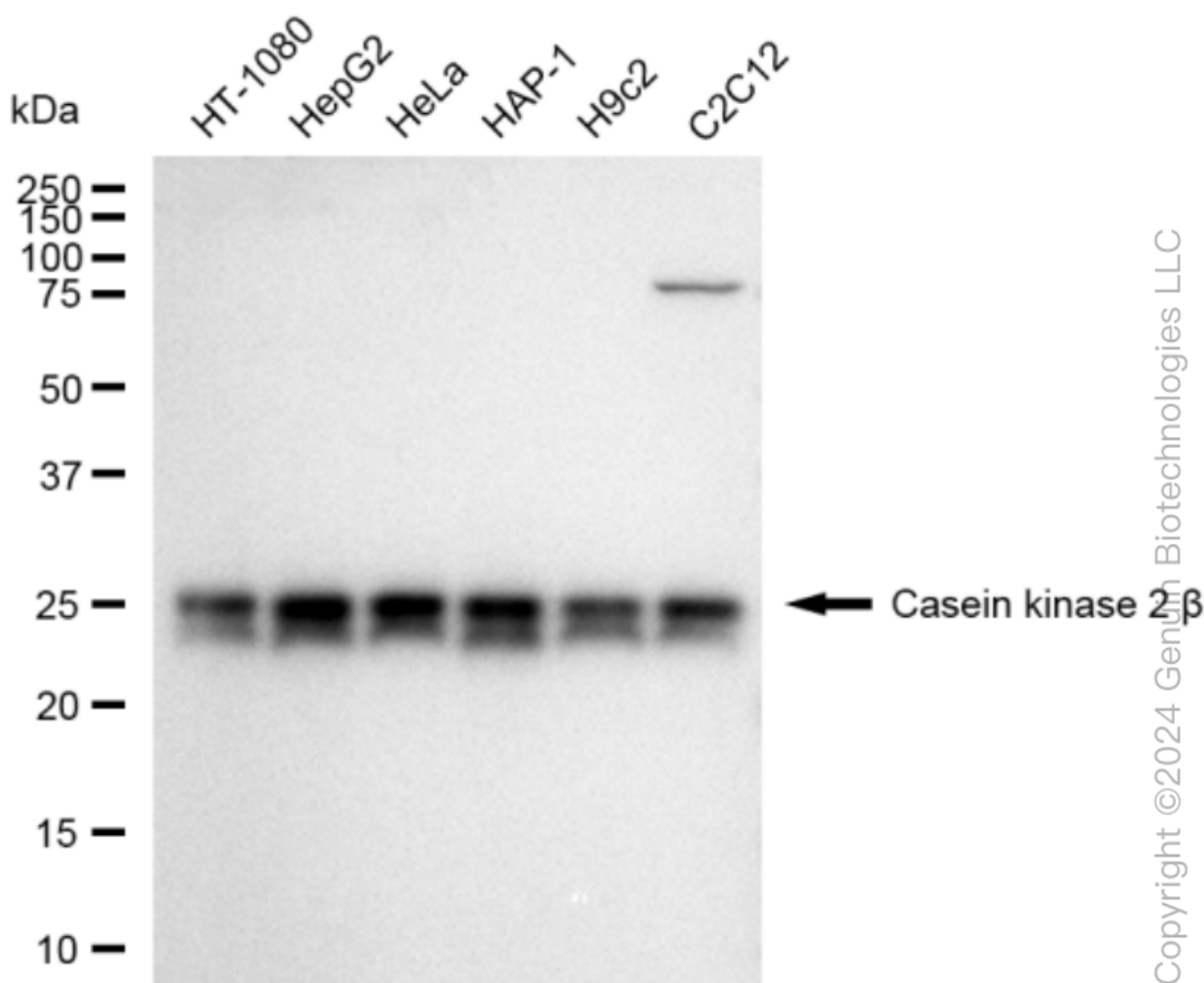
#### ORDERS

SALES@GENUINBIOTECH.COM  
FAX: +1-540-855-7041

[WWW.GENUINBIOTECH.COM](http://WWW.GENUINBIOTECH.COM)

## KD-Validated Anti-Casein kinase 2 beta Recombinant Rabbit Monoclonal Antibody

PAGE 3



Western blotting analysis using anti-Casein kinase 2 beta antibody (Cat#61434). Total cell lysates (30 µg) from various cell lines were loaded and separated by SDS-PAGE. The blot was incubated with anti-Casein kinase 2 beta antibody (Cat#61434, 1:5,000) and HRP-conjugated goat anti-rabbit secondary antibody (Cat#201, 1:20,000) respectively. Image was developed using FeQ™ ECL Substrate Kit (Cat#226).

### SUPPORT

SUPPORT@GENUINBIOTECH.COM  
TEL: +1-540-855-7041

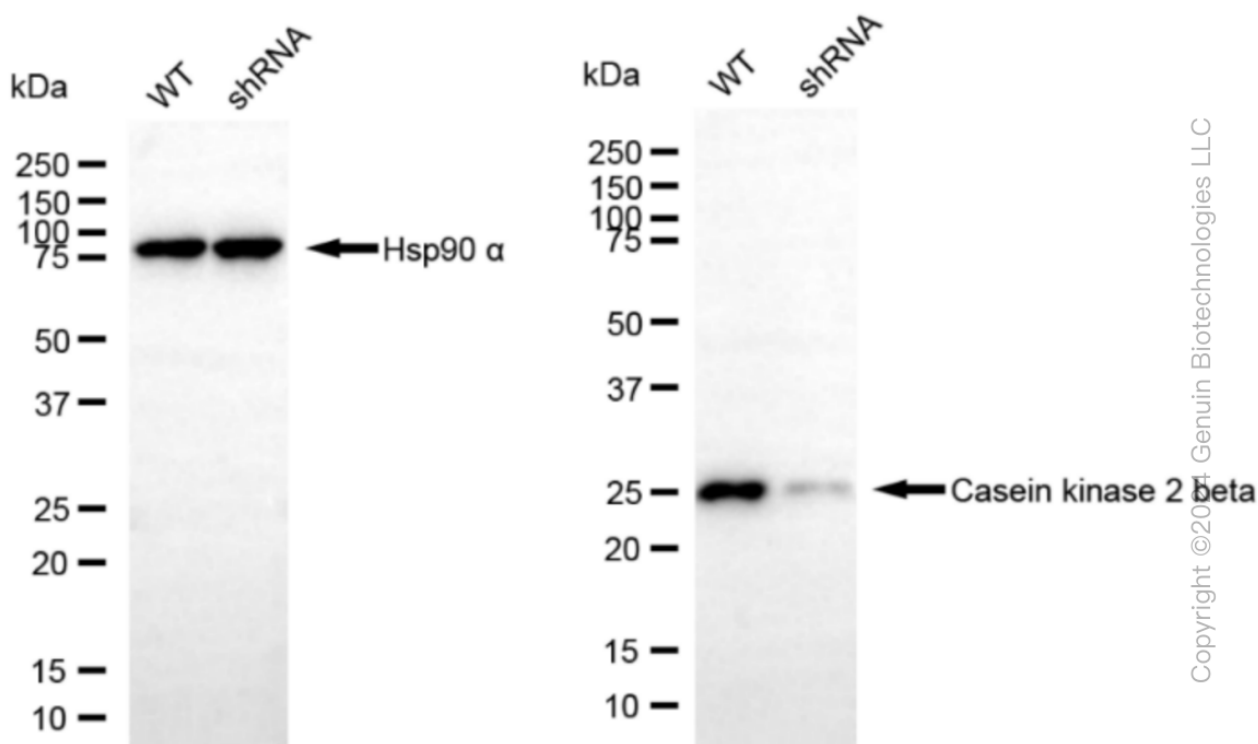
### ORDERS

SALES@GENUINBIOTECH.COM  
FAX: +1-540-855-7041

[WWW.GENUINBIOTECH.COM](http://WWW.GENUINBIOTECH.COM)

## KD-Validated Anti-Casein kinase 2 beta Recombinant Rabbit Monoclonal Antibody

PAGE 4



Western blotting analysis using anti-Casein kinase 2 beta antibody (Cat#61434). Casein kinase 2 beta expression in wild type (WT) and Casein kinase 2 beta shRNA knockdown (KD) HeLa cells with 30  $\mu$ g of total cell lysates.  $\beta$ -Tubulin serves as a loading control. The blot was incubated with anti-Casein kinase 2 beta antibody (Cat#61434, 1:5,000) and HRP-conjugated goat anti-rabbit secondary antibody (Cat#201, 1:20,000) respectively. Image was developed using FeQ™ ECL Substrate Kit (Cat#226).

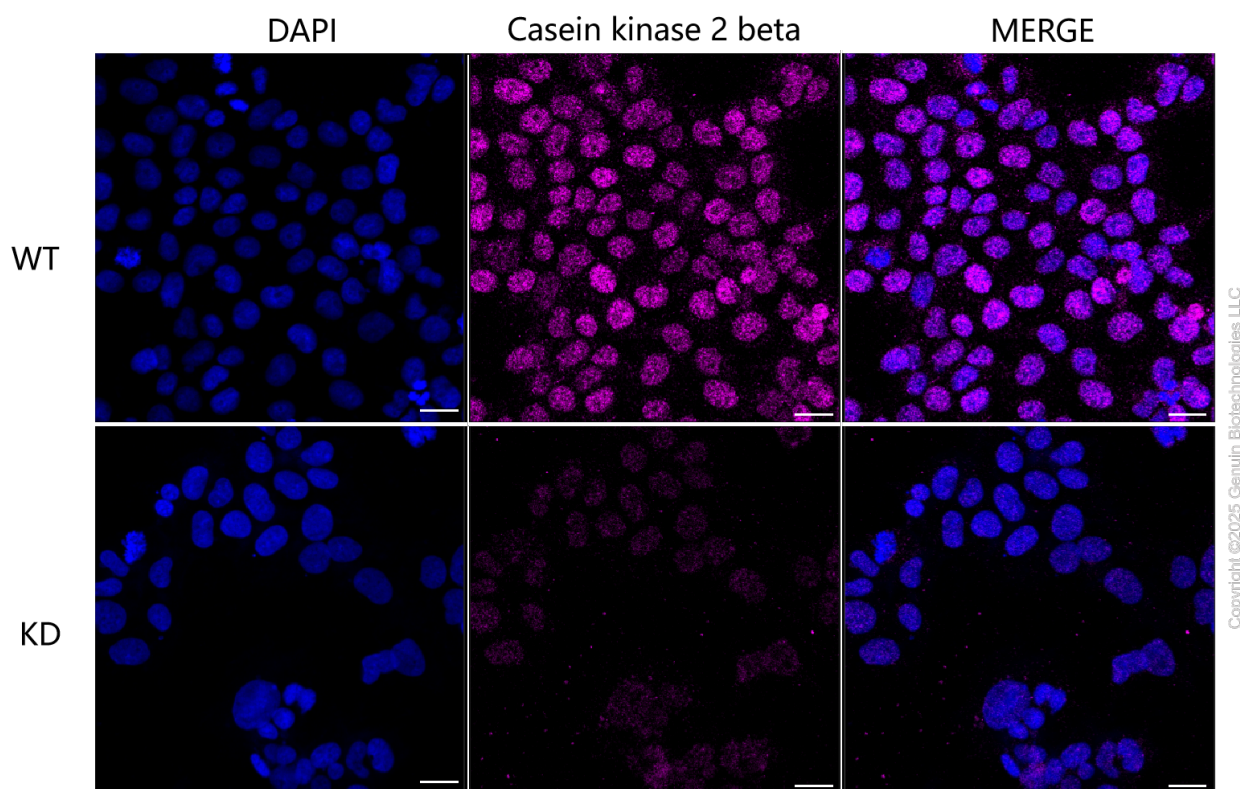
### SUPPORT

SUPPORT@GENUINBIOTECH.COM  
TEL: +1-540-855-7041

### ORDERS

SALES@GENUINBIOTECH.COM  
FAX: +1-540-855-7041

[WWW.GENUINBIOTECH.COM](http://WWW.GENUINBIOTECH.COM)



Immunocytochemical staining of HeLa cells using anti-Casein kinase 2 beta antibody (Cat#61434, 1:1,000), Top panel: wild-type (WT); Bottom panel: Casein kinase 2 beta shRNA knockdown (KD). Nuclei were stained blue with DAPI; Casein kinase 2 beta was stained magenta with Alexa Fluor® 647. Scale bar, 20  $\mu$ m.