

# KD-Validated Anti-APBB1 Recombinant Rabbit Monoclonal Antibody



**Catalog #: 61435**

## Aliases

APBB1; Amyloid Beta Precursor Protein Binding Family B Member 1; FE65; RIR; Amyloid Beta (A4) Precursor Protein-Binding, Family B, Member 1 (Fe65); Amyloid-Beta A4 Precursor Protein-Binding Family B Member 1; Adaptor Protein FE65a2; Stat-Like Protein; Protein Fe65; MGC:9072; Fe65

## Background

Gene Name: APBB1

NCBI Gene Entry: [322](#)

UniProt Entry: [O00213](#)

## Application Information

Molecular Weight: Predicted, 77 kDa, observed, 100 kDa

Clonality: Rabbit monoclonal antibody

Clone ID: 23GB3665

Species Reactivity: Human

Applications Tested: Western blotting (WB), flow cytometry (FCM), immunocytochemistry (IC)

## Immunogen

A synthesized peptide derived from human FE65

## Isotype

Rabbit IgG

## Storage Buffer

Supplied in PBS (pH 7.4) containing 50% glycerol, and 0.02% sodium azide.

## Storage

Store at -20 °C for one year.

## Recommended Dilutions

Western Blotting (WB): 1:1,000-1:5,000

Flow Cytometry (FCM): 1:2,000

Immunocytochemistry (IC): 1:100-1:1,000

---

### SUPPORT

SUPPORT@GENUINBIOTECH.COM  
TEL: +1-540-855-7041

### ORDERS

SALES@GENUINBIOTECH.COM  
FAX: +1-540-855-7041

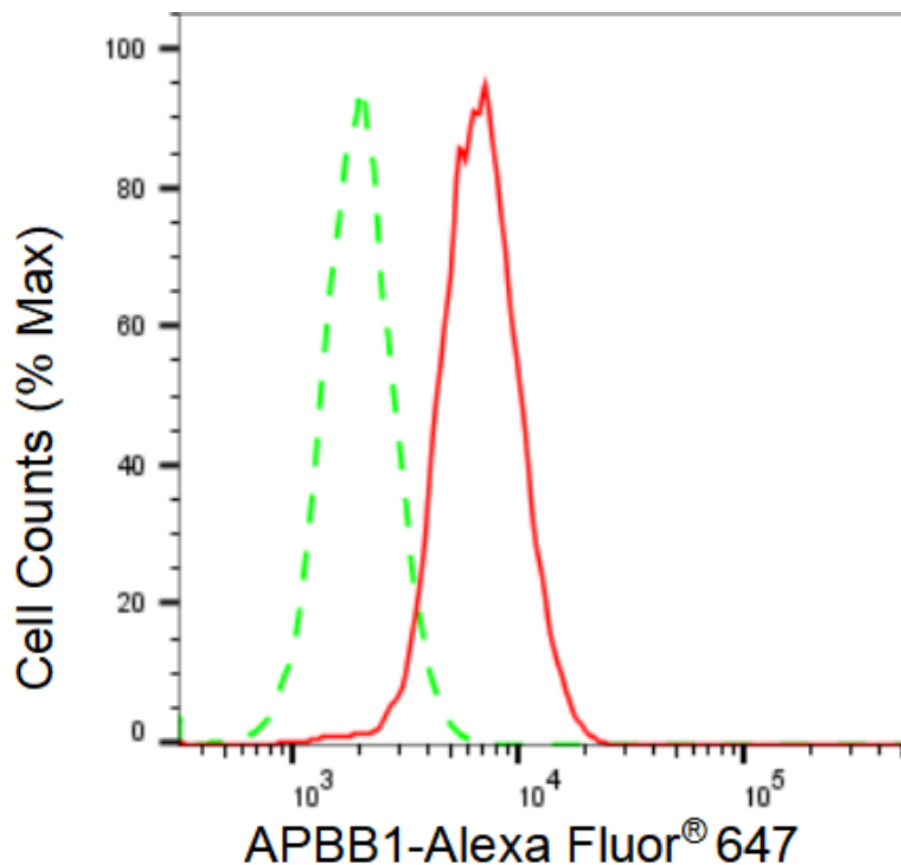
[WWW.GENUINBIOTECH.COM](http://WWW.GENUINBIOTECH.COM)

# KD-Validated Anti-APBB1 Recombinant Rabbit Monoclonal Antibody

PAGE 2

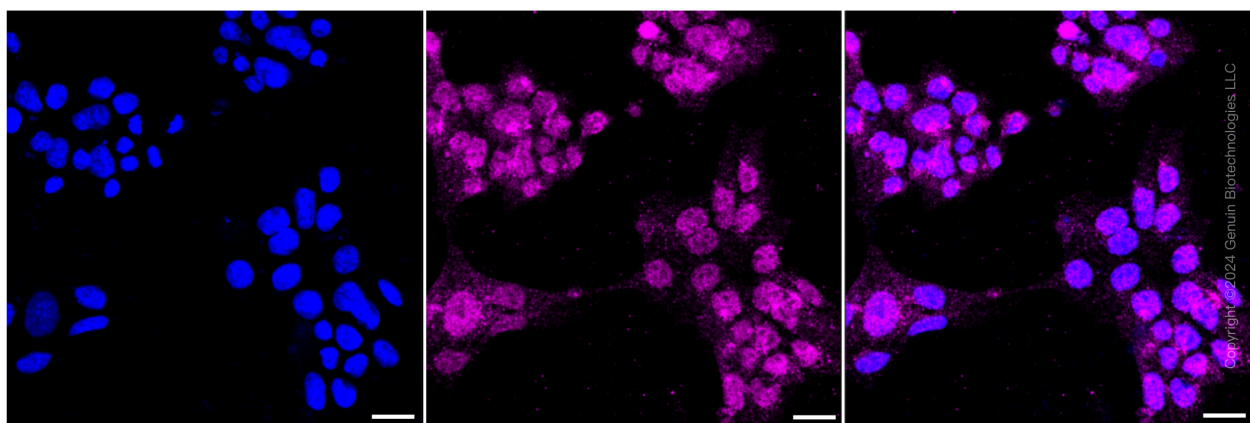
**Note:** This product is for research use only.

## Validation Data



Copyright ©2024 Genuin Biotechnologies LLC

Flow cytometric analysis of APBB1 expression in HAP-1 cells using APBB1 antibody (Cat#61435, 1:2,000). Green, isotype control; red, APBB1.



Copyright ©2024 Genuin Biotechnologies LLC

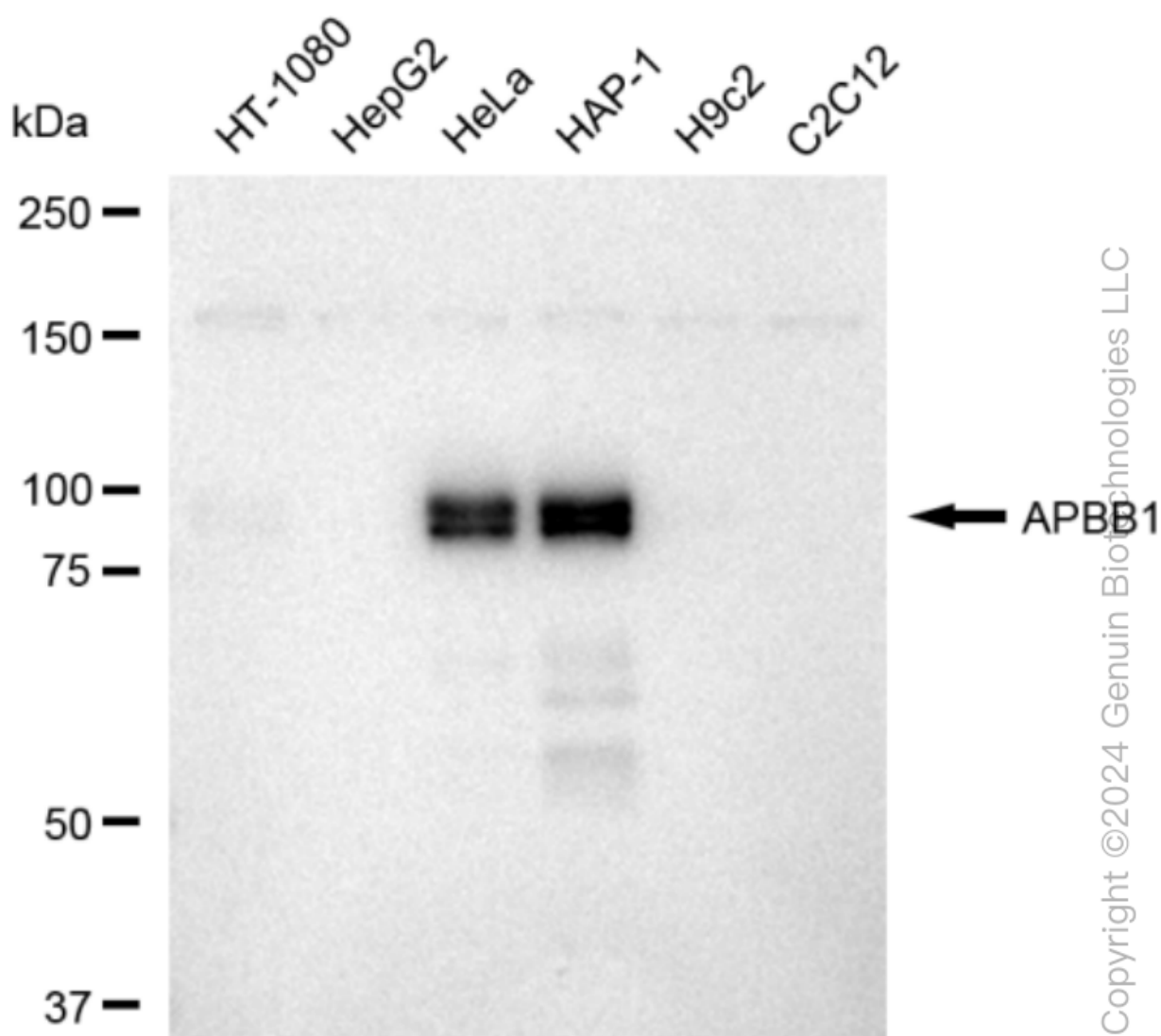
### SUPPORT

SUPPORT@GENUINBIOTECH.COM  
TEL: +1-540-855-7041

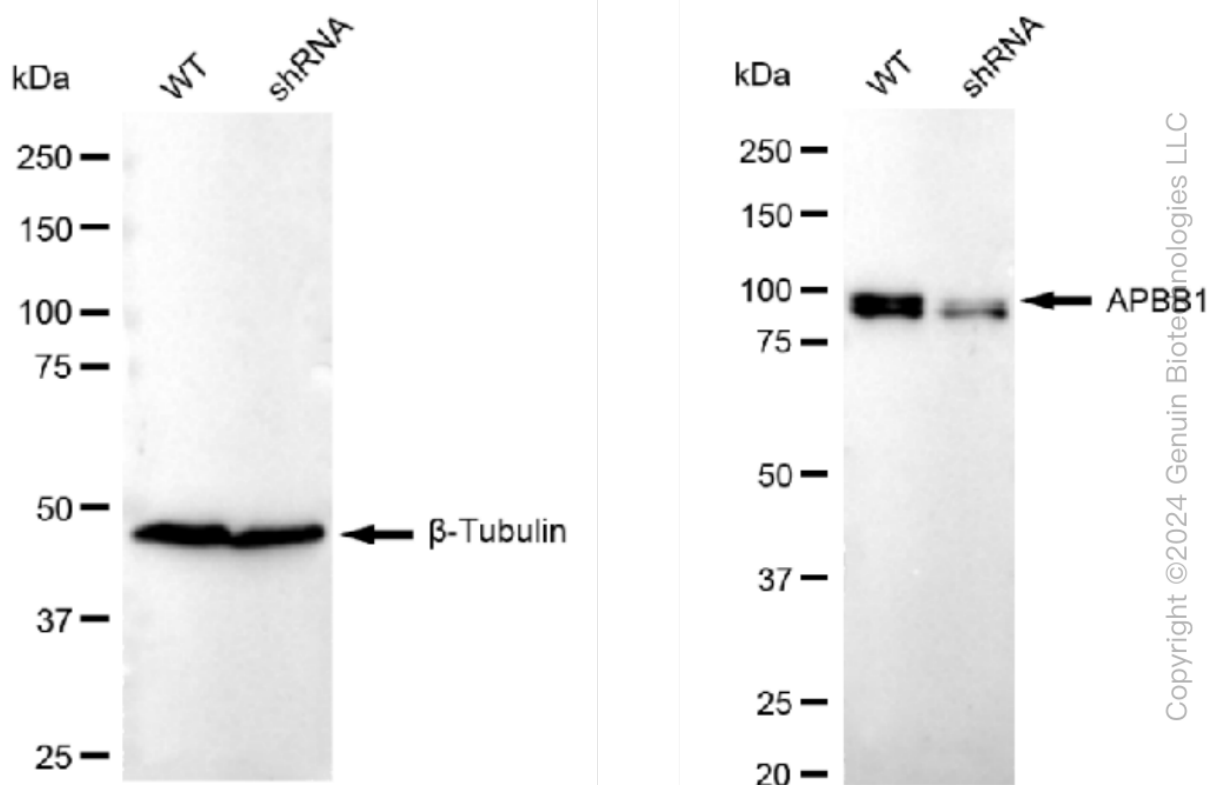
### ORDERS

SALES@GENUINBIOTECH.COM  
FAX: +1-540-855-7041

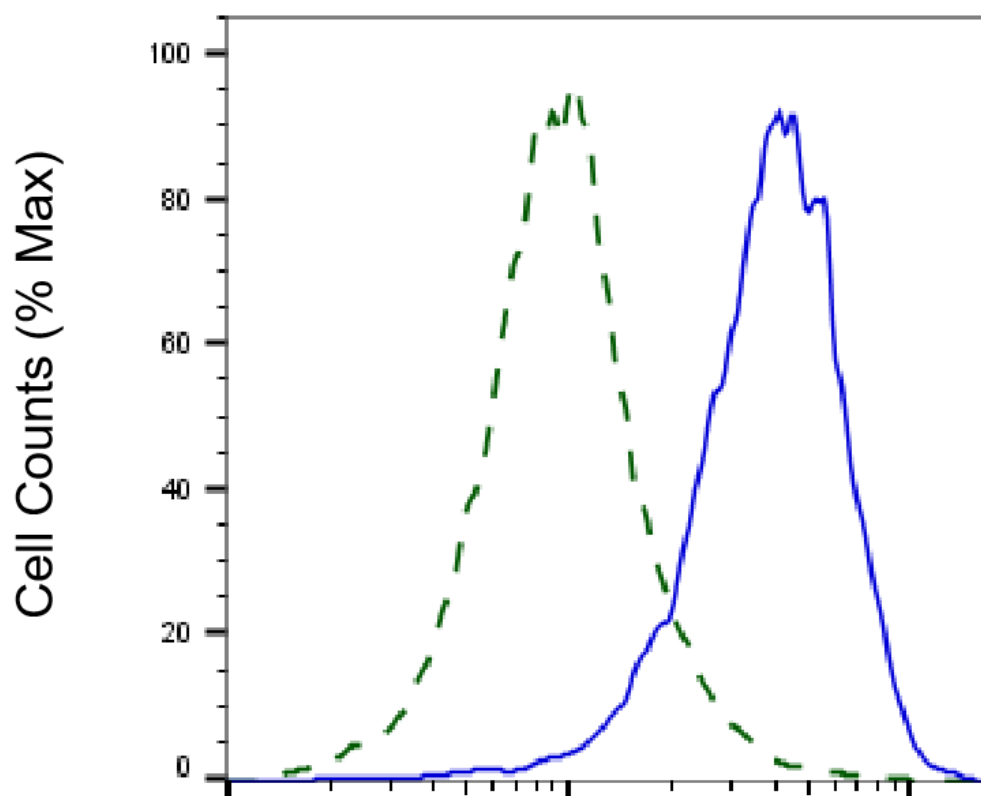
[WWW.GENUINBIOTECH.COM](http://WWW.GENUINBIOTECH.COM)



Western blotting analysis using anti-APBB1 antibody (Cat#61435). Total cell lysates (30 µg) from various cell lines were loaded and separated by SDS-PAGE. The blot was incubated with anti-APBB1 antibody (Cat#61435, 1:5,000) and HRP-conjugated goat anti-rabbit secondary antibody (Cat#201, 1:20,000) respectively. Image was developed using FeQ™ ECL Substrate Kit (Cat#226).



Western blotting analysis using anti-APBB1 antibody (Cat#61435). APBB1 expression in wild type (WT) and APBB1 shRNA knockdown (KD) HeLa cells with 30  $\mu$ g of total cell lysates.  $\beta$ -Tubulin serves as a loading control. The blot was incubated with anti-APBB1 antibody (Cat#61435, 1:5,000) and HRP-conjugated goat anti-rabbit secondary antibody (Cat#201, 1:20,000) respectively. Image was developed using FeQ™ ECL Substrate Kit (Cat#226).



Copyright ©2025 Genuin Biotechnologies LLC

### APBB1-Alexa Fluor® 647

Validation of APBB1 knockdown using flow cytometry. Wild-type(WT, Blue) and knockdown(KD, Green) HeLa cells were stained with anti-APBB1 antibody (Cat#61435, 1:2,000) and analyzed using BD flow cytometer.