

KD-Validated Anti-FSCN1 Recombinant Rabbit Monoclonal Antibody



Catalog #: 61438

Aliases

FSCN1; Fascin Actin-Bundling Protein 1; P55; SN; 55 KDa Actin-Bundling Protein; FLJ38511; Fascin; FAN1; HSN; Fascin Homolog 1, Actin-Bundling Protein (Strongylocentrotus Purpuratus); Singed (Drosophila)-Like (Sea Urchin Fascin Homolog Like); Epididymis Secretory Sperm Binding Protein; Fascin Homolog 1, Actin-Bundling Protein; Singed-Like (Fascin Homolog, Sea Urchin); Singed, Drosophila, Homolog-Like; Actin Bundling Protein; Singed-Like Protein

Background

Gene Name: FSCN1

NCBI Gene Entry: [6624](#)

UniProt Entry: [Q16658](#)

Application Information

Molecular Weight: Predicted, 55 kDa; observed, 54 kDa

Clonality: Rabbit monoclonal antibody

Clone ID: 25GB2525

Species Reactivity: Human, mouse, rat

Applications Tested: Western blotting (WB), flow cytometry (FCM), immunocytochemistry (IC)

Immunogen

A synthesized peptide derived from human Fascin

Isotype

Rabbit IgG

Storage Buffer

Supplied in PBS (pH 7.4) containing 50% glycerol, and 0.02% sodium azide.

Storage

Store at -20 °C for one year.

Recommended Dilutions

Western Blotting (WB): 1:2,000-1:10,000

Flow Cytometry (FCM): 1:2,000

Immunocytochemistry (IC): 1:100-1:1,000

SUPPORT

SUPPORT@GENUINBIOTECH.COM
TEL: +1-540-855-7041

ORDERS

SALES@GENUINBIOTECH.COM
FAX: +1-540-855-7041

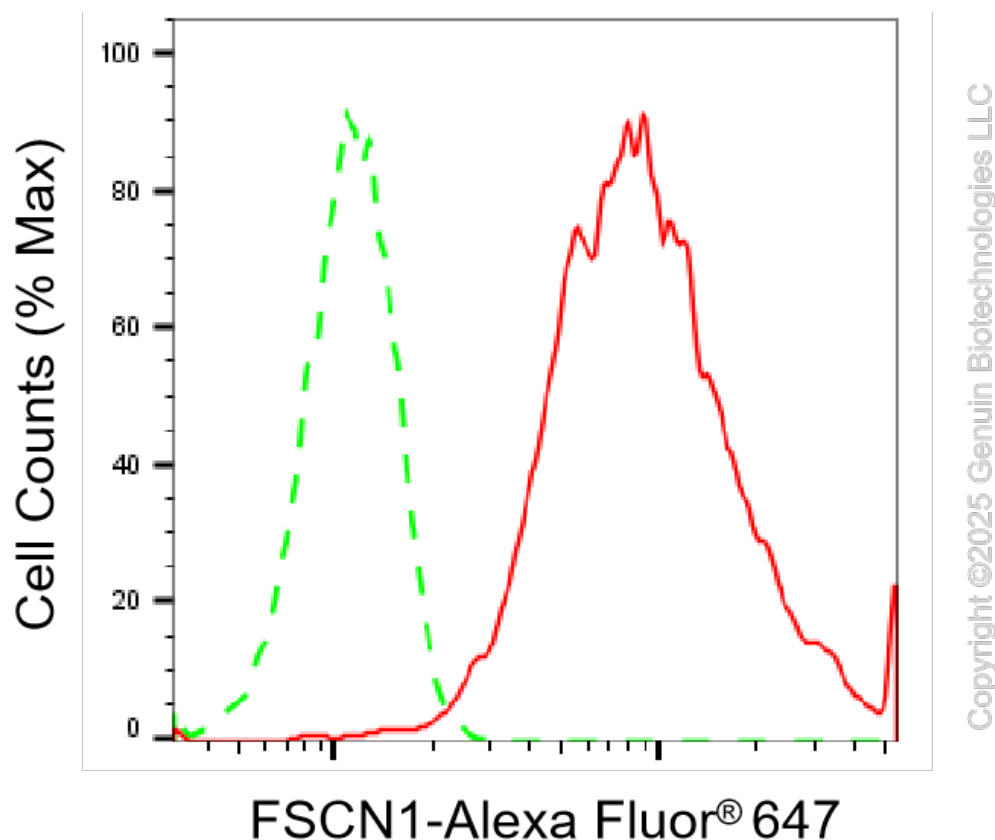
WWW.GENUINBIOTECH.COM

KD-Validated Anti-FSCN1 Recombinant Rabbit Monoclonal Antibody

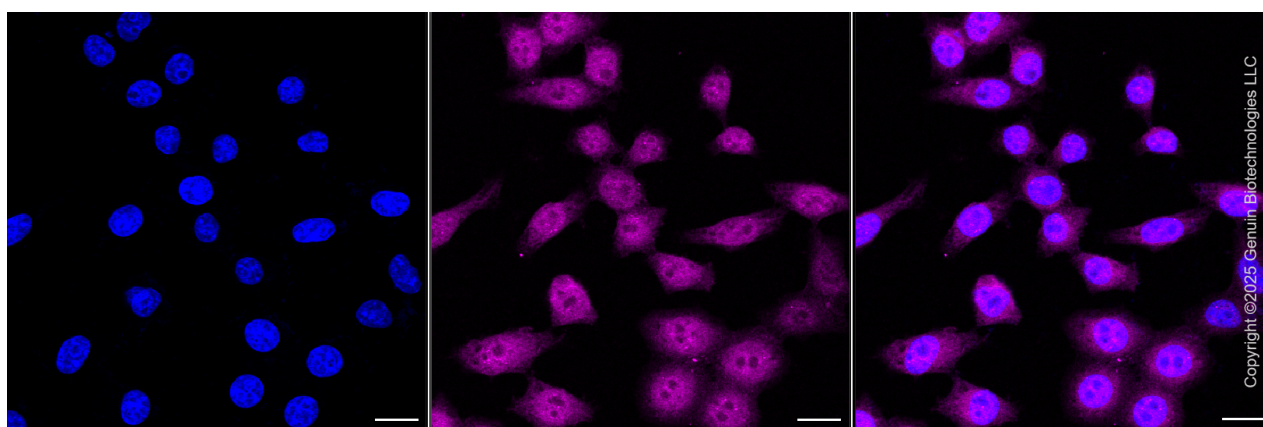
PAGE 2

Note: This product is for research use only.

Validation Data



Flow cytometric analysis of FSCN1 expression in HepG2 cells using FSCN1 antibody (Cat#61438, 1:2,000). Green, isotype control; red, FSCN1 .



Immunocytochemical staining of HepG2 cells with anti-FSCN1 antibody (Cat#61438, 1:1,000). Nuclei were stained blue with DAPI; FSCN1 was stained magenta with Alexa Fluor® 647. Images were taken using Leica stellaris 5. Protein abundance based on laser Intensity and smart gain: High. Scale bar, 20 μ m.

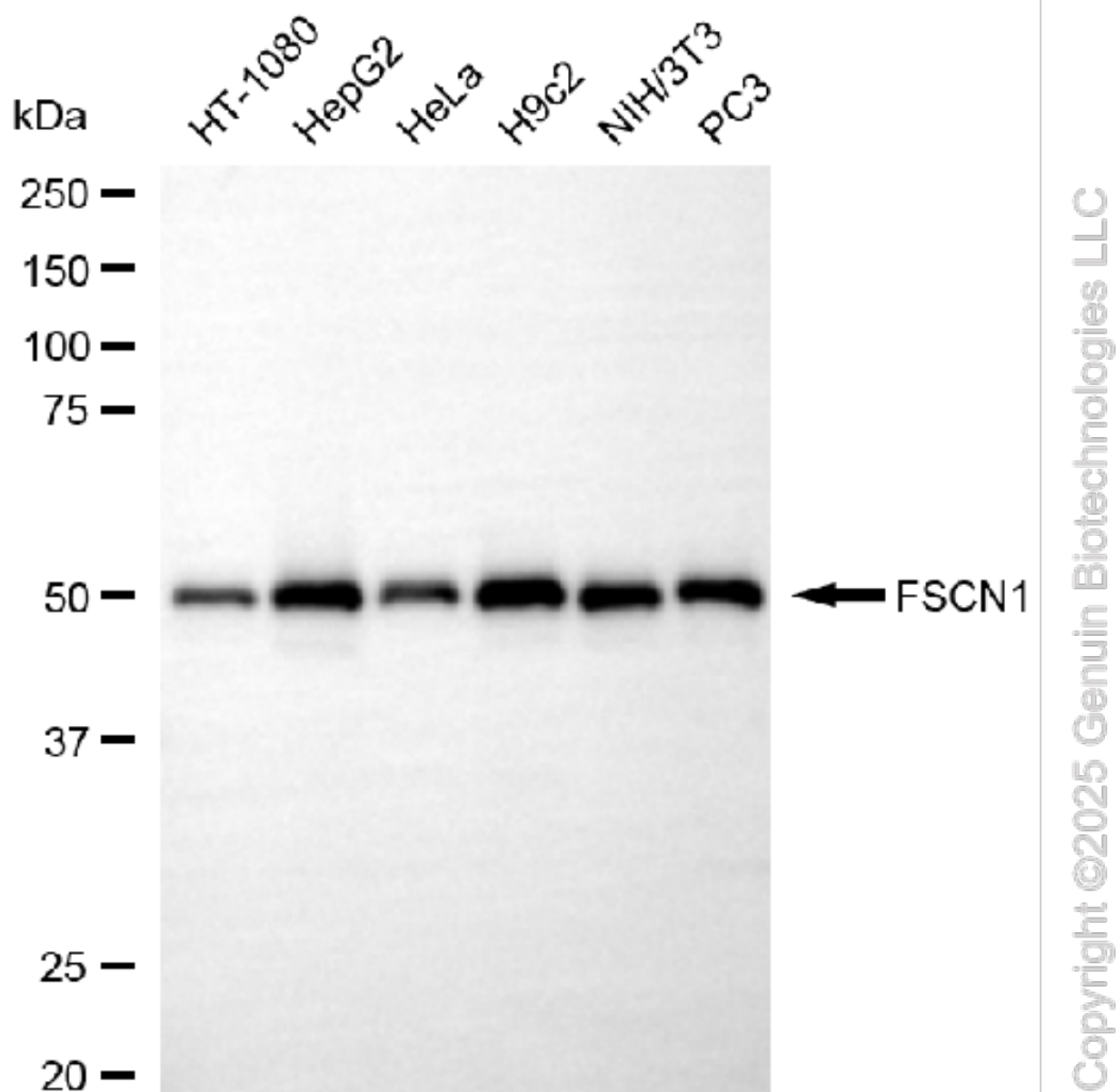
SUPPORT

SUPPORT@GENUINBIOTECH.COM
TEL: +1-540-855-7041

ORDERS

SALES@GENUINBIOTECH.COM
FAX: +1-540-855-7041

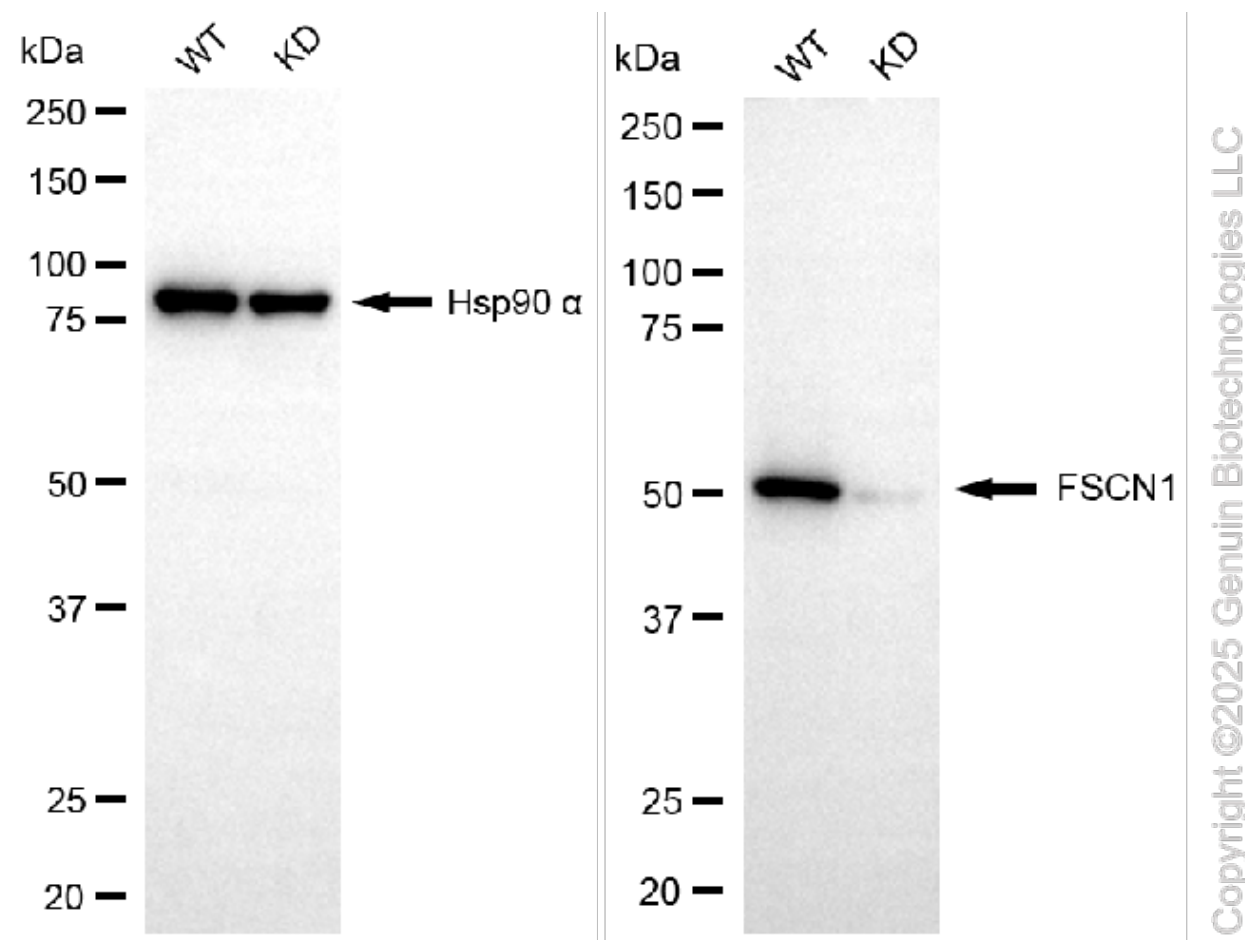
WWW.GENUINBIOTECH.COM



Western blotting analysis using anti-FSCN1 antibody (Cat#61438). Total cell lysates (10 µg) from various cell lines were loaded and separated by SDS-PAGE. The blot was incubated with anti-FSCN1 antibody (Cat#61438, 1:10,000) and HRP-conjugated goat anti-rabbit secondary antibody (Cat#201, 1:20,000) respectively. Image was developed using NaQ™ ECL Substrate Kit (Cat#716).

KD-Validated Anti-FSCN1 Recombinant Rabbit Monoclonal Antibody

PAGE 4



Western blotting analysis using anti-FSCN1 antibody (Cat#61438). FSCN1 expression in wild-type (WT) and FSCN1 knockdown (KD) HeLa cells with 20 µg of total cell lysates. Hsp90 α serves as a loading control. The blot was incubated with anti-FSCN1 antibody (Cat#61438, 1:5,000) and HRP-conjugated goat anti-rabbit secondary antibody (Cat#201, 1:20,000) respectively. Image was developed using NaQ™ ECL Substrate Kit (Cat#716).

SUPPORT

SUPPORT@GENUINBIOTECH.COM
TEL: +1-540-855-7041

ORDERS

SALES@GENUINBIOTECH.COM
FAX: +1-540-855-7041

WWW.GENUINBIOTECH.COM