

KD-Validated Anti-Keratin 18 Recombinant Rabbit Monoclonal Antibody



Catalog #: 61439

Aliases

KRT18; Keratin 18; Cell Proliferation-Inducing Gene 46 Protein; Keratin, Type I Cytoskeletal 18; Keratin 18, Type I; CK-18; CYK18; K18; Cytokeratin 18; Cytokeratin-18 Keratin-18

Background

Gene Name: KRT18

NCBI Gene Entry: [3875](#)

UniProt Entry: [P05783](#)

Application Information

Molecular Weight: Predicted, 48 kDa; observed, 44 kDa

Clonality: Rabbit monoclonal antibody

Clone ID: 25GB2530

Species Reactivity: Human

Applications Tested: Western blotting (WB), flow cytometry (FCM), immunocytochemistry (IC), immunohistochemistry (IHC)

Immunogen

A synthesized peptide derived from human Cytokeratin 18

Isotype

Rabbit IgG

Storage Buffer

Supplied in PBS (pH 7.4) containing 50% glycerol, and 0.02% sodium azide.

Storage

Store at -20 °C for one year.

Recommended Dilutions

Western Blotting (WB): 1:1,000-1:5,000

Flow Cytometry (FCM): 1:2,000

Immunocytochemistry (IC): 1:100-1:1,000

Immunohistochemistry (IHC): 1:100-1:200

SUPPORT

SUPPORT@GENUINBIOTECH.COM
TEL: +1-540-855-7041

ORDERS

SALES@GENUINBIOTECH.COM
FAX: +1-540-855-7041

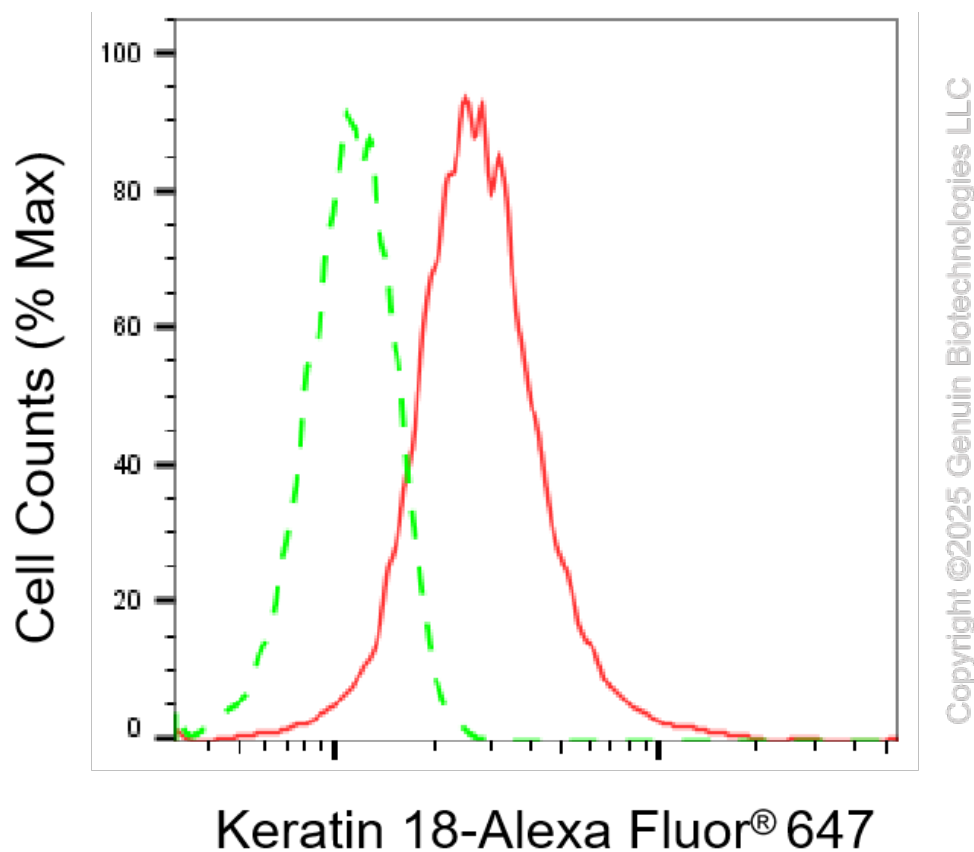
WWW.GENUINBIOTECH.COM

KD-Validated Anti-Keratin 18 Recombinant Rabbit Monoclonal Antibody

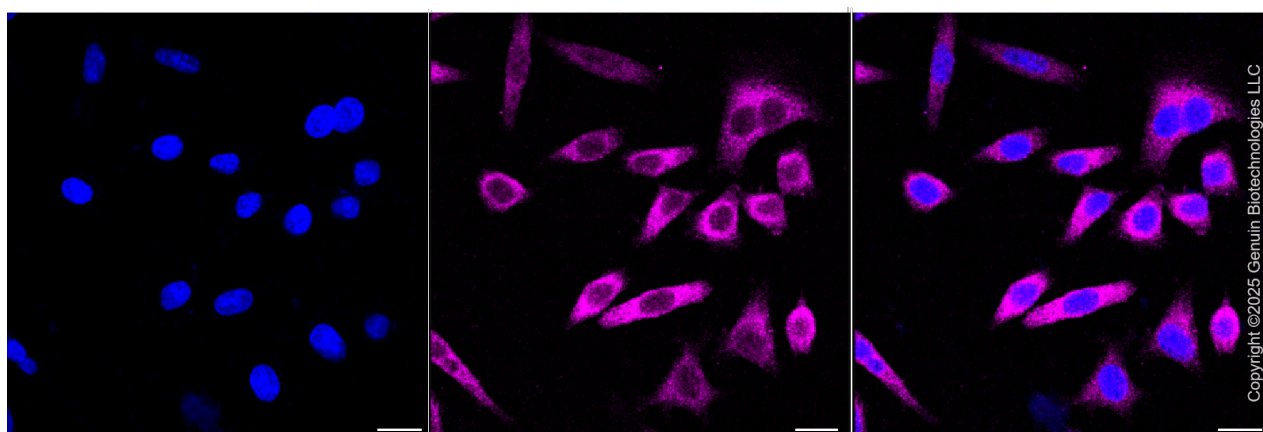
PAGE 2

Note: This product is for research use only.

Validation Data



Flow cytometric analysis of Keratin 18 expression in HepG2 cells using Keratin 18 antibody (Cat#61439, 1:2,000). Green, isotype control; red, Keratin 18.



Immunocytochemical staining of HepG2 cells with anti-Keratin 18 antibody (Cat#61439, 1:1,000). Nuclei were stained blue with DAPI; Keratin 18 was stained magenta with Alexa Fluor® 647. Images were taken using Leica stellaris 5. Protein abundance based on laser Intensity and

SUPPORT

SUPPORT@GENUINBIOTECH.COM
TEL: +1-540-855-7041

ORDERS

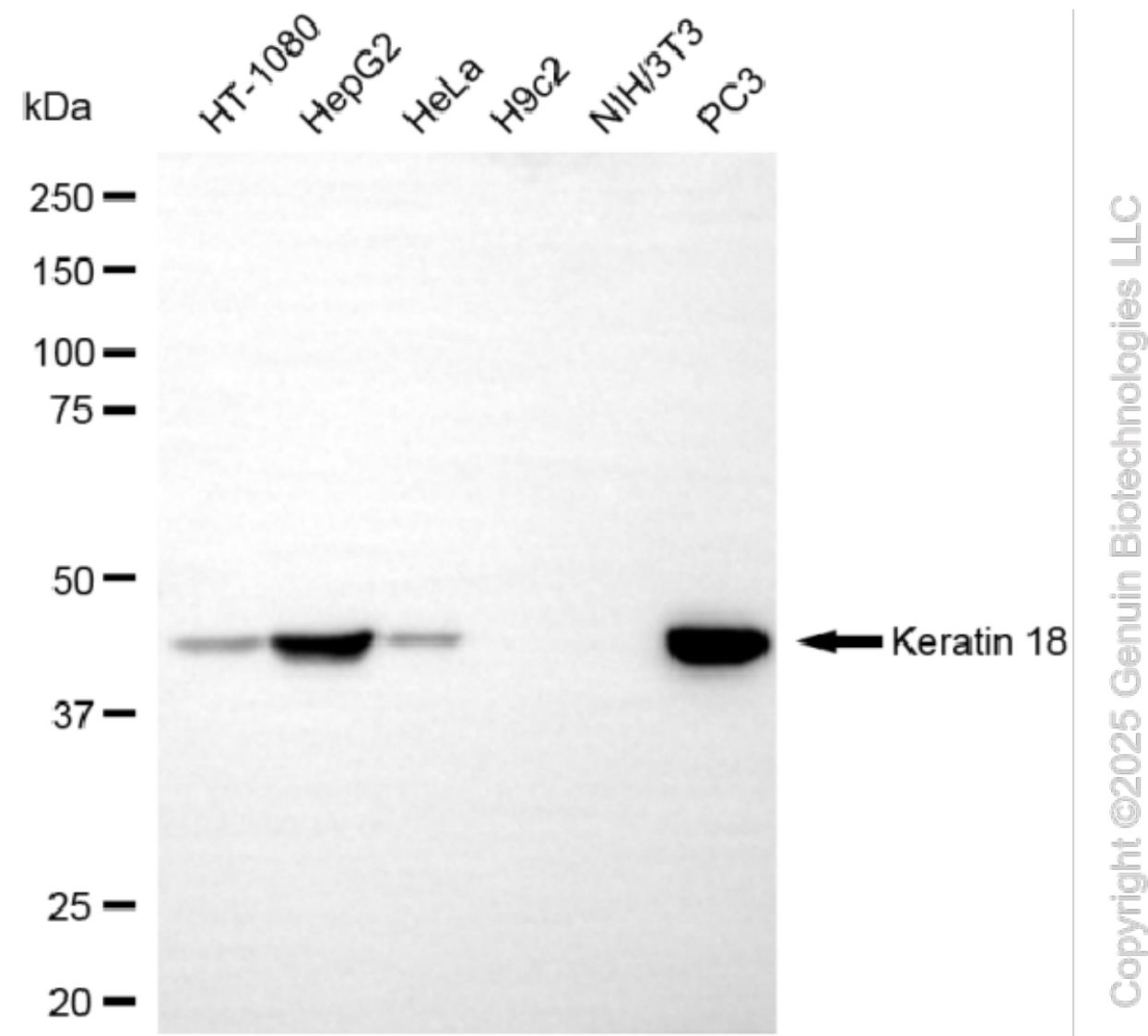
SALES@GENUINBIOTECH.COM
FAX: +1-540-855-7041

WWW.GENUINBIOTECH.COM

KD-Validated Anti-Keratin 18 Recombinant Rabbit Monoclonal Antibody

PAGE 3

smart gain: Medium. Scale bar, 20 μ m.



Western blotting analysis using anti-keratin 18 antibody (Cat#61439). Total cell lysates (30 μ g) from various cell lines were loaded and separated by SDS-PAGE. The blot was incubated with anti-keratin 18 antibody (Cat#61439, 1:5,000) and HRP-conjugated goat anti-rabbit secondary antibody (Cat#201, 1:20,000) respectively. Image was developed using NaQ™ ECL Substrate Kit (Cat#716).

SUPPORT

SUPPORT@GENUINBIOTECH.COM
TEL: +1-540-855-7041

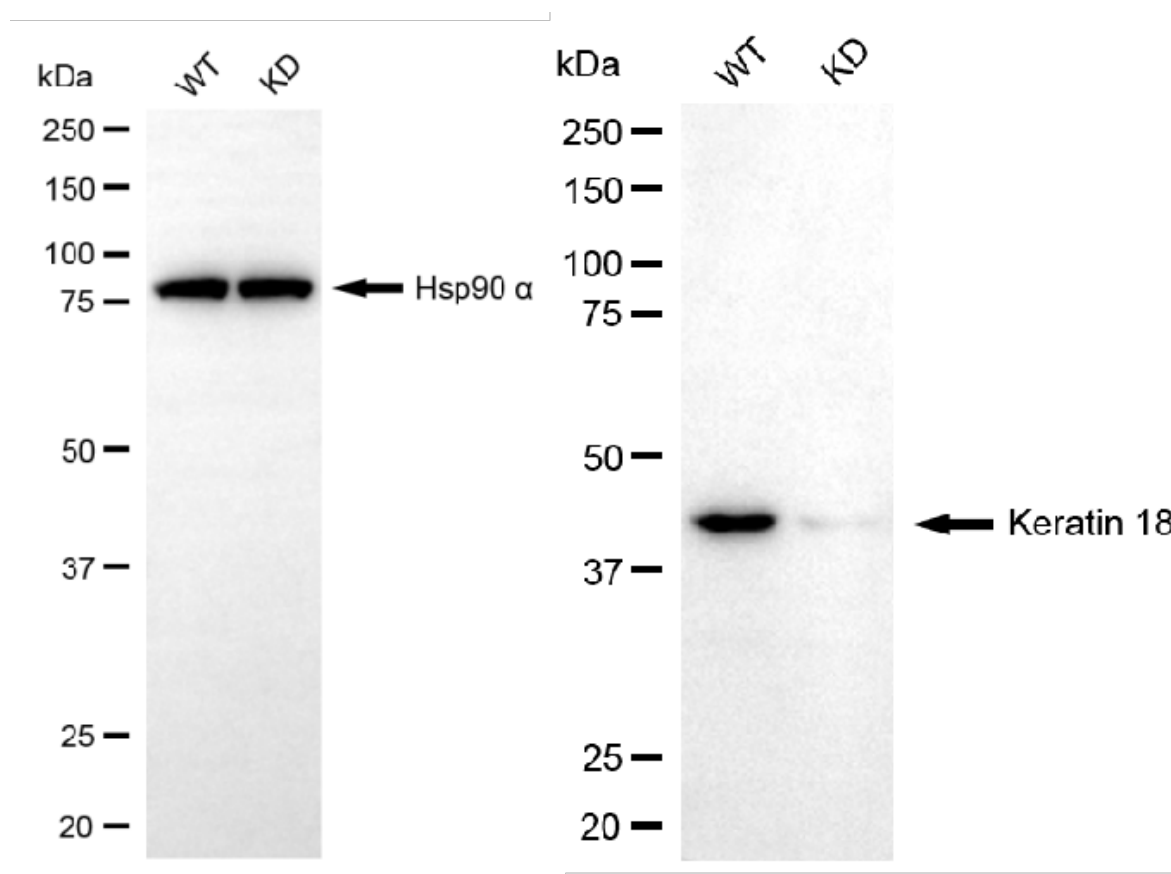
ORDERS

SALES@GENUINBIOTECH.COM
FAX: +1-540-855-7041

WWW.GENUINBIOTECH.COM

KD-Validated Anti-Keratin 18 Recombinant Rabbit Monoclonal Antibody

PAGE 4



Copyright ©2025 Genuin Biotechnologies LLC

Western blotting analysis using anti-keratin 18 antibody (Cat#61439). Keratin 18 expression in wild-type (WT) and keratin 18 (KRT18) knockdown (KD) 293T cells with 30 µg of total cell lysates. Hsp90 α serves as a loading control. The blot was incubated with anti-keratin 18 antibody (Cat#61439, 1:5,000) and HRP-conjugated goat anti-rabbit secondary antibody (Cat#201, 1:20,000) respectively. Image was developed using FeQ™ ECL Substrate Kit (Cat#226).

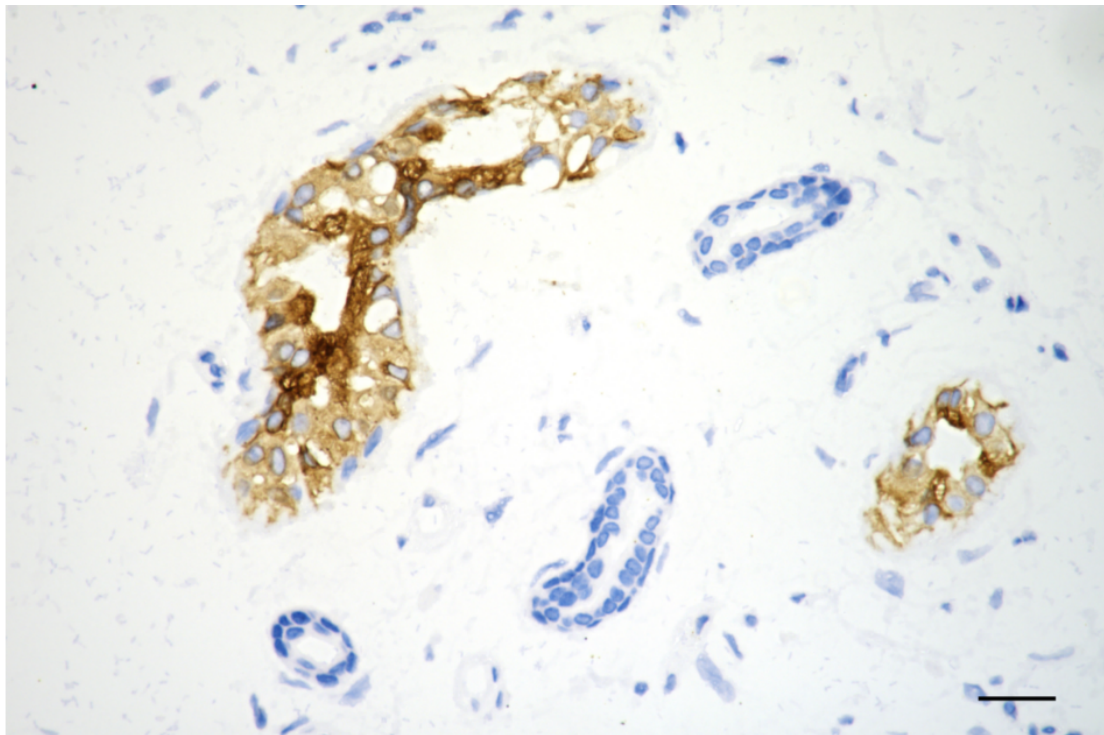
SUPPORT

SUPPORT@GENUINBIOTECH.COM
TEL: +1-540-855-7041

ORDERS

SALES@GENUINBIOTECH.COM
FAX: +1-540-855-7041

WWW.GENUINBIOTECH.COM



Copyright ©2025 Genuin Biotechnologies LLC

Immunohistochemistry was performed on paraffin-embedded human breast carcinoma using anti-glial fibrillary acidic protein antibody (Cat#61439, 1:200). Antigen retrieval was done in sodium citrate buffer (pH 6.0). DAB was used for detection, with hematoxylin counterstaining. Images were acquired using a Nikon Ci-L Plus microscope (40× objective). Scale bar: 25 μ m.