

KD-Validated Anti-CHAF1B Recombinant Rabbit Monoclonal Antibody



Catalog #: 61440

Aliases

CHAF1B; Chromatin Assembly Factor 1 Subunit B; MPHOSPH7; CAF1P60; CAF1A; MPP7; M-Phase Phosphoprotein 7; CAF-1; CAF1; Human Chromatin Assembly Factor-I P60 Subunit; Chromatin Assembly Factor I P60 Subunit; CAF-I 60 KDa Subunit; CAF-1 Subunit B; CAF-I P60; Chromatin Assembly Factor 1, Subunit B (P60); Chromatin Assembly Factor I, P60 Subunit; CAF-IP60

Background

Gene Name: CHAF1B

NCBI Gene Entry: [8208](#)

UniProt Entry: [Q13112](#)

Application Information

Molecular Weight: Predicted, 61 kDa, observed, 70 kDa

Clonality: Rabbit monoclonal antibody

Clone ID: 23GB3765

Species Reactivity: Human

Applications Tested: Western blotting (WB), flow cytometry (FCM), immunocytochemistry (IC)

Immunogen

A synthesized peptide derived from human p60 CAF1

Isotype

Rabbit IgG

Storage Buffer

Supplied in PBS (pH 7.4) containing 50% glycerol, and 0.02% sodium azide.

Storage

Store at -20 °C for one year.

Recommended Dilutions

Western Blotting (WB): 1:1,000-1:5,000

Flow Cytometry (FCM): 1:2,000

Immunocytochemistry (IC): 1:100-1:1,000

SUPPORT

SUPPORT@GENUINBIOTECH.COM
TEL: +1-540-855-7041

ORDERS

SALES@GENUINBIOTECH.COM
FAX: +1-540-855-7041

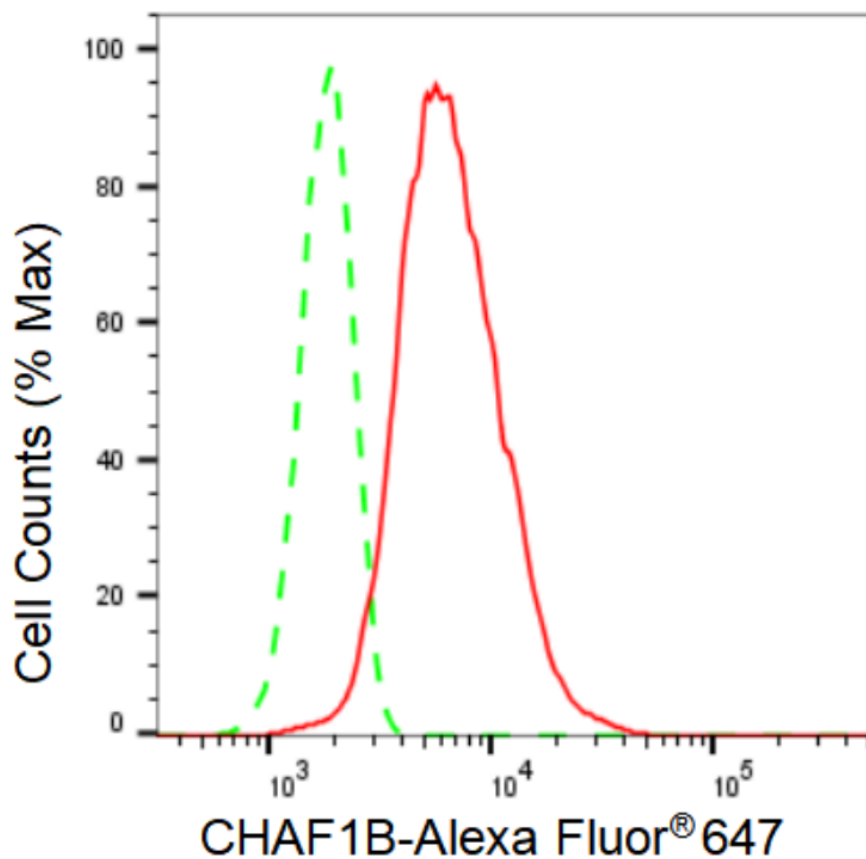
WWW.GENUINBIOTECH.COM

KD-Validated Anti-CHAF1B Recombinant Rabbit Monoclonal Antibody

PAGE 2

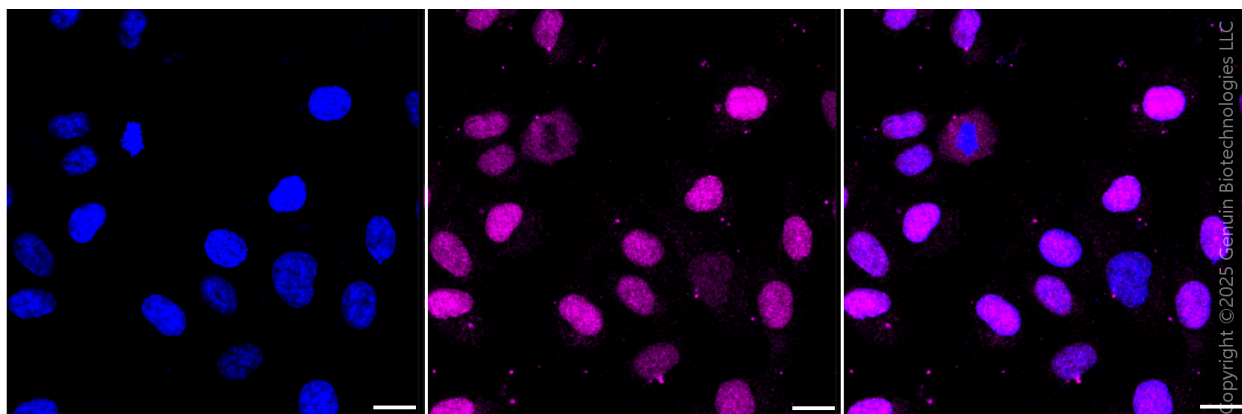
Note: This product is for research use only.

Validation Data



Copyright ©2024 Genuin Biotechnologies LLC

Flow cytometric analysis of CHAF1B expression in HT-1080 cells using CHAF1B antibody (Cat#61440, 1:2,000). Green, isotype control; red, CHAF1B.



Copyright ©2025 Genuin Biotechnologies LLC

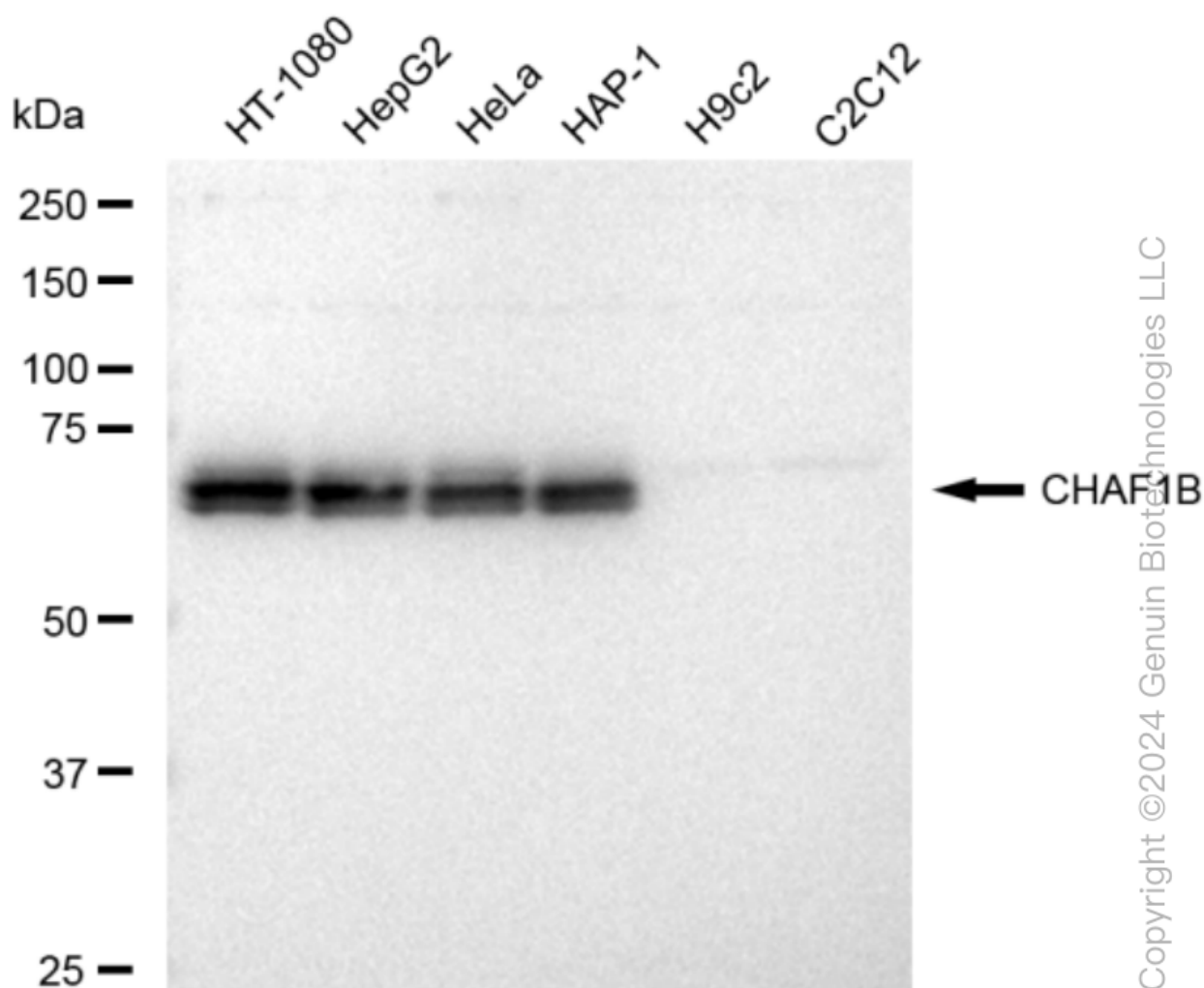
SUPPORT

SUPPORT@GENUINBIOTECH.COM
TEL: +1-540-855-7041

ORDERS

SALES@GENUINBIOTECH.COM
FAX: +1-540-855-7041

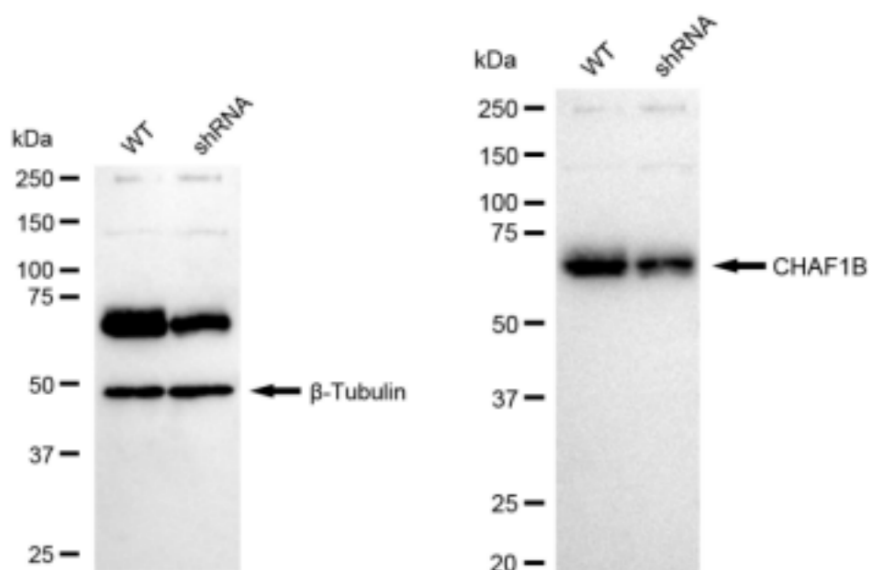
WWW.GENUINBIOTECH.COM



Western blotting analysis using anti-CHAF1B antibody (Cat#61440). Total cell lysates (30 μ g) from various cell lines were loaded and separated by SDS-PAGE. The blot was incubated with anti-CHAF1B antibody (Cat#61440, 1:5,000) and HRP-conjugated goat anti-rabbit secondary antibody (Cat#201, 1:20,000) respectively. Image was developed using FeQ™ ECL Substrate Kit (Cat#226).

KD-Validated Anti-CHAF1B Recombinant Rabbit Monoclonal Antibody

PAGE 4



Copyright ©2024 Genuin Biotechnologies LLC

Western blotting analysis using anti-CHAF1B antibody (Cat#61440). CHAF1B expression in wild type (WT) and CHAF1B shRNA knockdown (KD) HeLa cells with 30 µg of total cell lysates. β-Tubulin serves as a loading control. The blot was incubated with anti-CHAF1B antibody (Cat#61440, 1:5,000) and HRP-conjugated goat anti-rabbit secondary antibody (Cat#201, 1:20,000) respectively. Image was developed using FeQ™ ECL Substrate Kit (Cat#226).

SUPPORT

SUPPORT@GENUINBIOTECH.COM
TEL: +1-540-855-7041

ORDERS

SALES@GENUINBIOTECH.COM
FAX: +1-540-855-7041

WWW.GENUINBIOTECH.COM