

KD-Validated Anti-Core-binding factor subunit beta Recombinant Rabbit Monoclonal Antibody



Catalog #: 61442

Aliases

CBFB; Core-Binding Factor Subunit Beta; PEBP2B; SL3/AKV Core-Binding Factor Beta Subunit; SL3-3 Enhancer Factor 1 Subunit Beta; Core-Binding Factor Beta Subunit; PEBP2-Beta; PEA2-Beta; CBF-Beta; Polyomavirus Enhancer Binding Protein 2, Beta Subunit; Polyomavirus Enhancer-Binding Protein 2 Beta Subunit; SL3-3 Enhancer Factor 1 Beta Subunit; Core-Binding Factor, Beta Subunit; CLCD2

Background

Gene Name: CBFB

NCBI Gene Entry: [865](#)

UniProt Entry: [Q13951](#)

Application Information

Molecular Weight: Predicted, 22 kDa, observed, 22 kDa

Clonality: Rabbit monoclonal antibody

Clone ID: 23GB3785

Species Reactivity: Human, mouse, rat

Applications Tested: Western blotting (WB), flow cytometry (FCM), immunocytochemistry (IC)

Immunogen

A synthesized peptide derived from human CBFb

Isotype

Rabbit IgG

Storage Buffer

Supplied in PBS (pH 7.4) containing 50% glycerol, and 0.02% sodium azide.

Storage

Store at -20 °C for one year.

Recommended Dilutions

Western Blotting (WB): 1:1,000-1:5,000

Flow Cytometry (FCM): 1:2,000

Immunocytochemistry (IC): 1:100-1:1,000

SUPPORT

SUPPORT@GENUINBIOTECH.COM
TEL: +1-540-855-7041

ORDERS

SALES@GENUINBIOTECH.COM
FAX: +1-540-855-7041

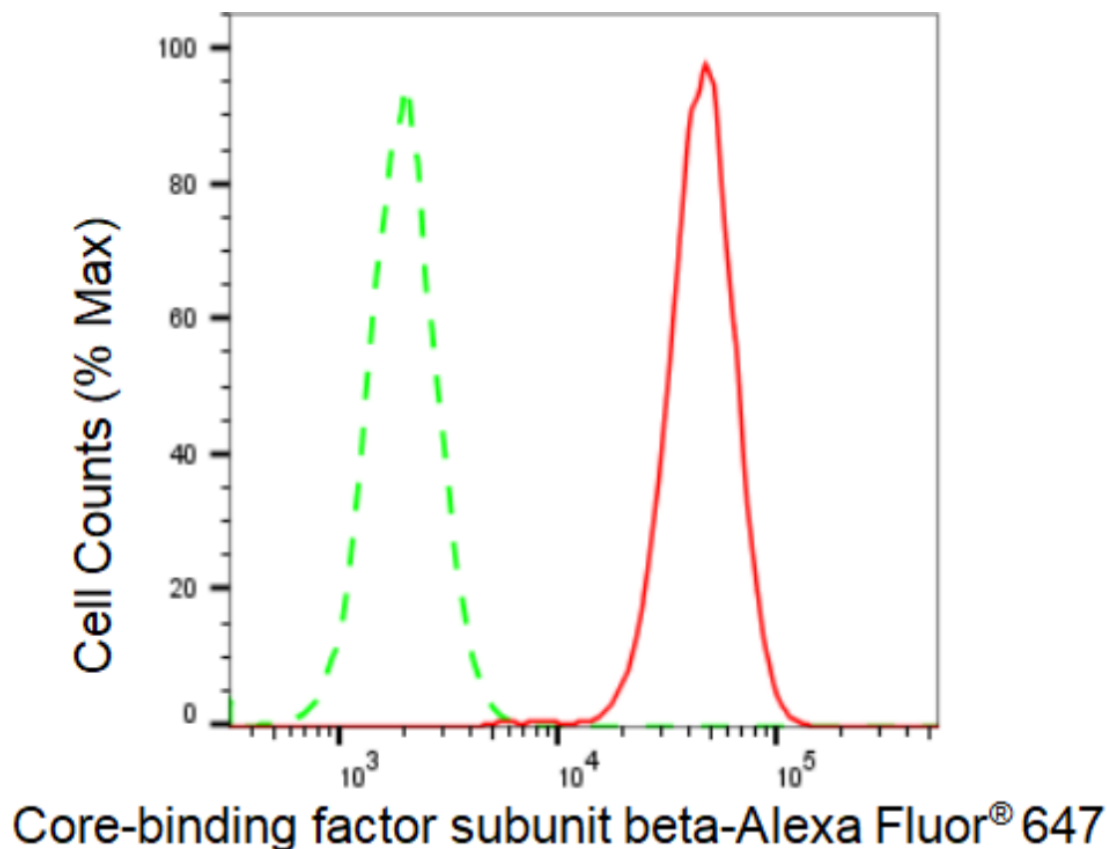
WWW.GENUINBIOTECH.COM

KD-Validated Anti-Core-binding factor subunit beta Recombinant Rabbit Monoclonal Antibody

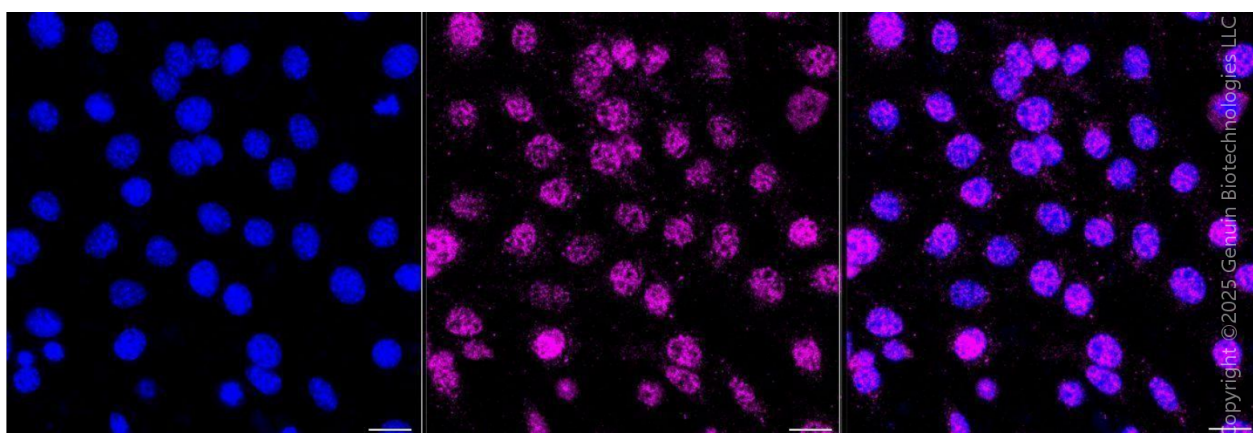
PAGE 2

Note: This product is for research use only.

Validation Data



Flow cytometric analysis of Core-binding factor subunit beta expression in HAP-1 cells using Core-binding factor subunit beta antibody (Cat#61442, 1:2,000). Green, isotype control; red, Core-binding factor subunit beta.



Immunocytochemical staining of C2C12 cells with anti-Core-binding factor subunit beta antibody (Cat#61442, 1:1,000). Nuclei were stained blue with DAPI; Core-binding factor subunit beta was stained magenta with Alexa Fluor® 647. Images were taken using Leica stellaris 5. Protein

SUPPORT

SUPPORT@GENUINBIOTECH.COM
TEL: +1-540-855-7041

ORDERS

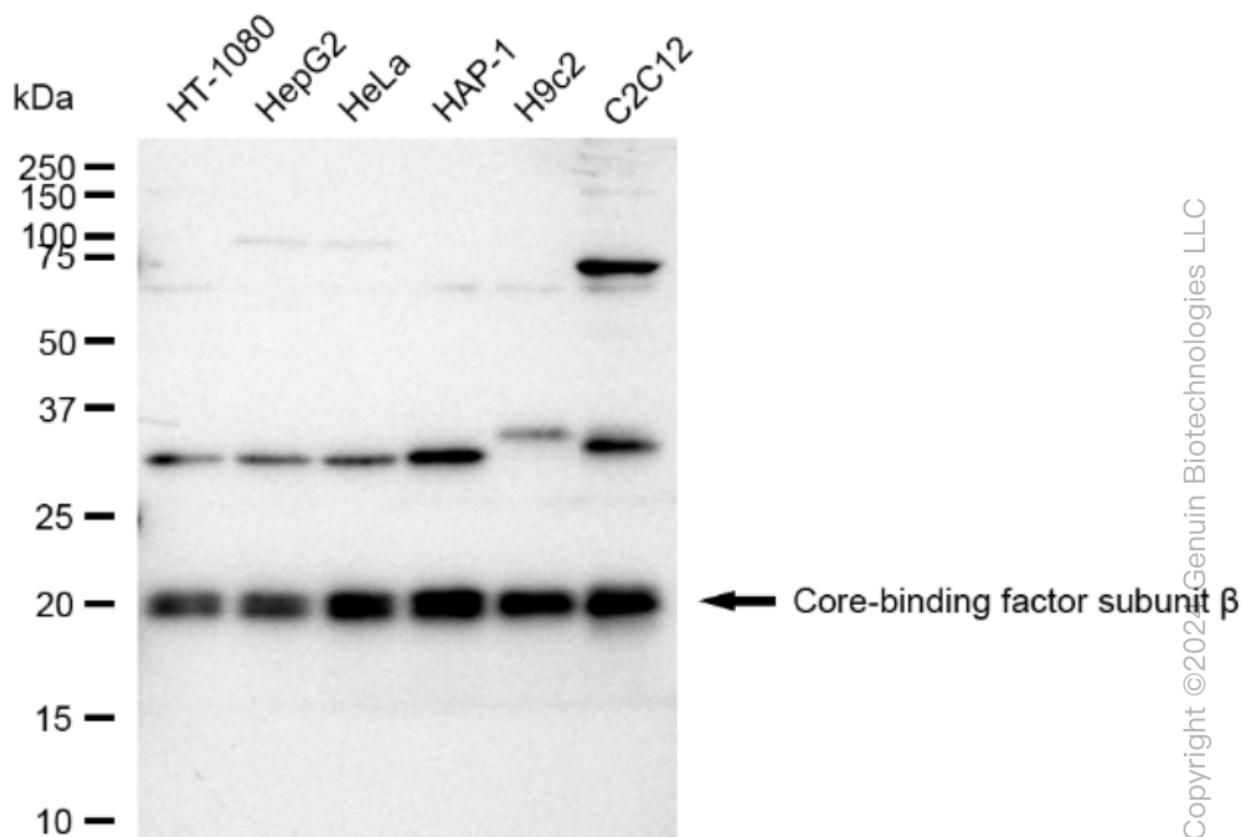
SALES@GENUINBIOTECH.COM
FAX: +1-540-855-7041

WWW.GENUINBIOTECH.COM

KD-Validated Anti-Core-binding factor subunit beta Recombinant Rabbit Monoclonal Antibody

PAGE 3

abundance based on laser Intensity and smart gain: Medium. Scale bar, 20 μ m.



Western blotting analysis using anti-Core-binding factor subunit beta antibody (Cat#61442). Total cell lysates (30 μ g) from various cell lines were loaded and separated by SDS-PAGE. The blot was incubated with anti-Core-binding factor subunit beta antibody (Cat#61442, 1:5,000) and HRP-conjugated goat anti-rabbit secondary antibody (Cat#201, 1:20,000) respectively. Image was developed using FeQ™ ECL Substrate Kit (Cat#226).

SUPPORT

SUPPORT@GENUINBIOTECH.COM
TEL: +1-540-855-7041

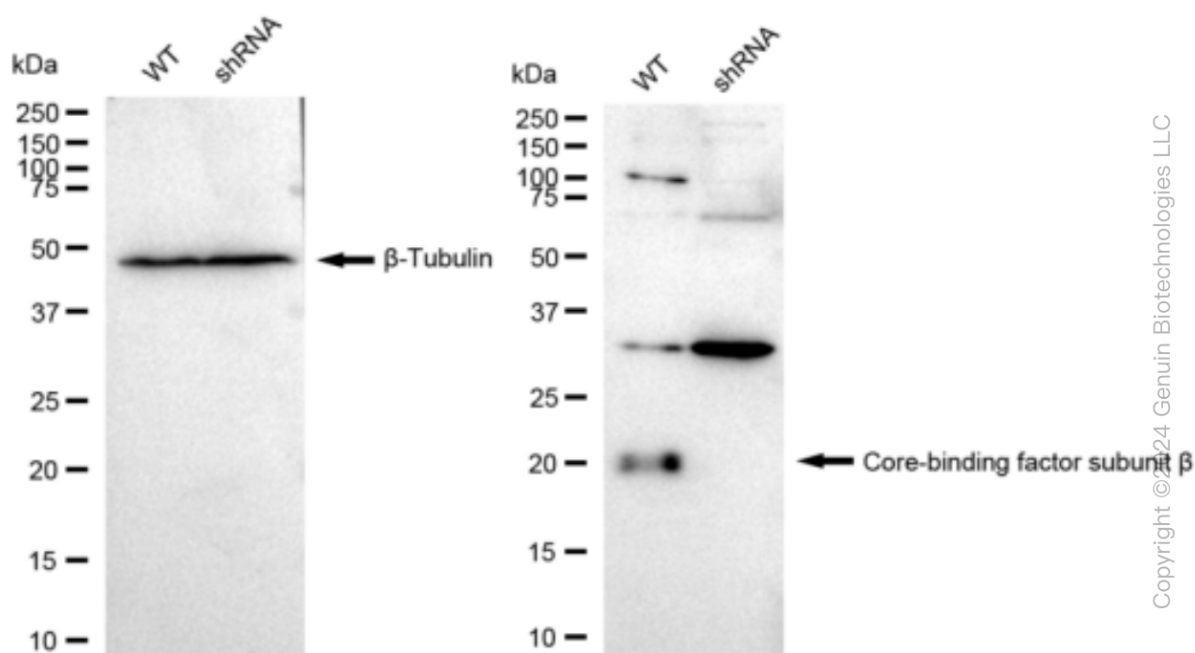
ORDERS

SALES@GENUINBIOTECH.COM
FAX: +1-540-855-7041

WWW.GENUINBIOTECH.COM

KD-Validated Anti-Core-binding factor subunit beta Recombinant Rabbit Monoclonal Antibody

PAGE 4



Western blotting analysis using anti-Core-binding factor subunit beta antibody (Cat#61442). Core-binding factor subunit beta expression in wild type (WT) and Core-binding factor subunit beta shRNA knockdown (KD) HeLa cells with 30 μ g of total cell lysates. β -Tubulin serves as a loading control. The blot was incubated with anti-Core-binding factor subunit beta antibody (Cat#61442, 1:5,000) and HRP-conjugated goat anti-rabbit secondary antibody (Cat#201, 1:20,000) respectively. Image was developed using FeQ™ ECL Substrate Kit (Cat#226).

SUPPORT

SUPPORT@GENUINBIOTECH.COM
TEL: +1-540-855-7041

ORDERS

SALES@GENUINBIOTECH.COM
FAX: +1-540-855-7041

WWW.GENUINBIOTECH.COM