

KD-Validated Anti-ACADVL Recombinant Rabbit Monoclonal Antibody



Catalog #: 61444

Aliases

ACADVL; Acyl-CoA Dehydrogenase Very Long Chain; VLCAD; LCACD; ACAD6; Very Long-Chain Specific Acyl-CoA Dehydrogenase, Mitochondrial; Acyl-Coenzyme A Dehydrogenase, Very Long Chain; EC 1.3.8.9; EC 1.3.99

Background

Gene Name: ACADVL

NCBI Gene Entry: [37](#)

UniProt Entry: [P49748](#)

Application Information

Molecular Weight: Predicted, 70 kDa, observed, 65 kDa

Clonality: Rabbit monoclonal antibody

Clone ID: 23GB3615

Species Reactivity: Human

Applications Tested: Western blotting (WB), flow cytometry (FCM), immunocytochemistry (IC)

Immunogen

A synthesized peptide derived from human ACADVL/VLCAD

Isotype

Rabbit IgG

Storage Buffer

Supplied in PBS (pH 7.4) containing 50% glycerol, and 0.02% sodium azide.

Storage

Store at -20 °C for one year.

Recommended Dilutions

Western Blotting (WB): 1:1,000-1:5,000

Flow Cytometry (FCM): 1:2,000

Immunocytochemistry (IC): 1:100-1:1,000

Note: This product is for research use only.

SUPPORT

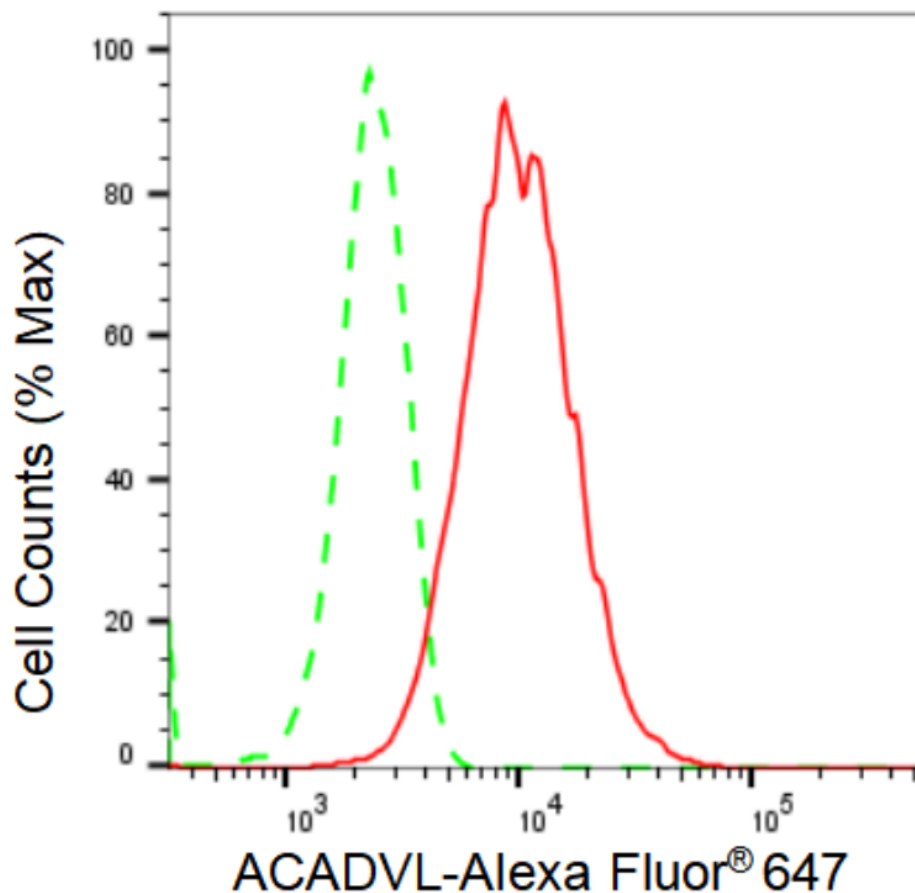
SUPPORT@GENUINBIOTECH.COM
TEL: +1-540-855-7041

ORDERS

SALES@GENUINBIOTECH.COM
FAX: +1-540-855-7041

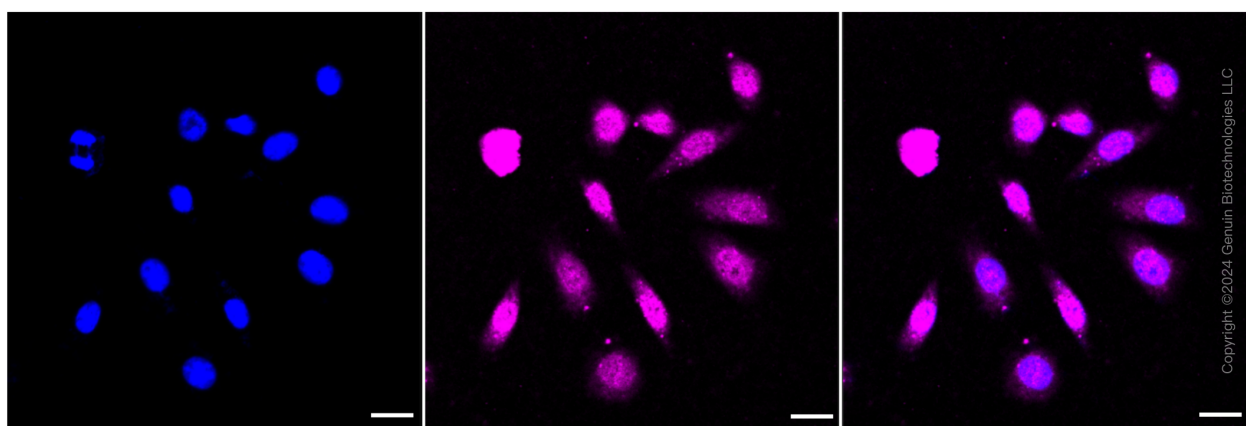
WWW.GENUINBIOTECH.COM

Validation Data



Copyright ©2024 Genuin Biotechnologies LLC

Flow cytometric analysis of ACADVL expression in HepG2 cells using ACADVL antibody (Cat#61444, 1:2,000). Green, isotype control; red, ACADVL.



Copyright ©2024 Genuin Biotechnologies LLC

Immunocytochemical staining of HepG2 cells with ACADVL antibody (Cat#61444, 1:1,000). Nuclei were stained blue with DAPI; ACADVL was stained magenta with Alexa Fluor® 647. Images were taken using Leica stellaris 5. Protein abundance based on laser Intensity and smart gain: Medium. Scale bar: 20 μ m.

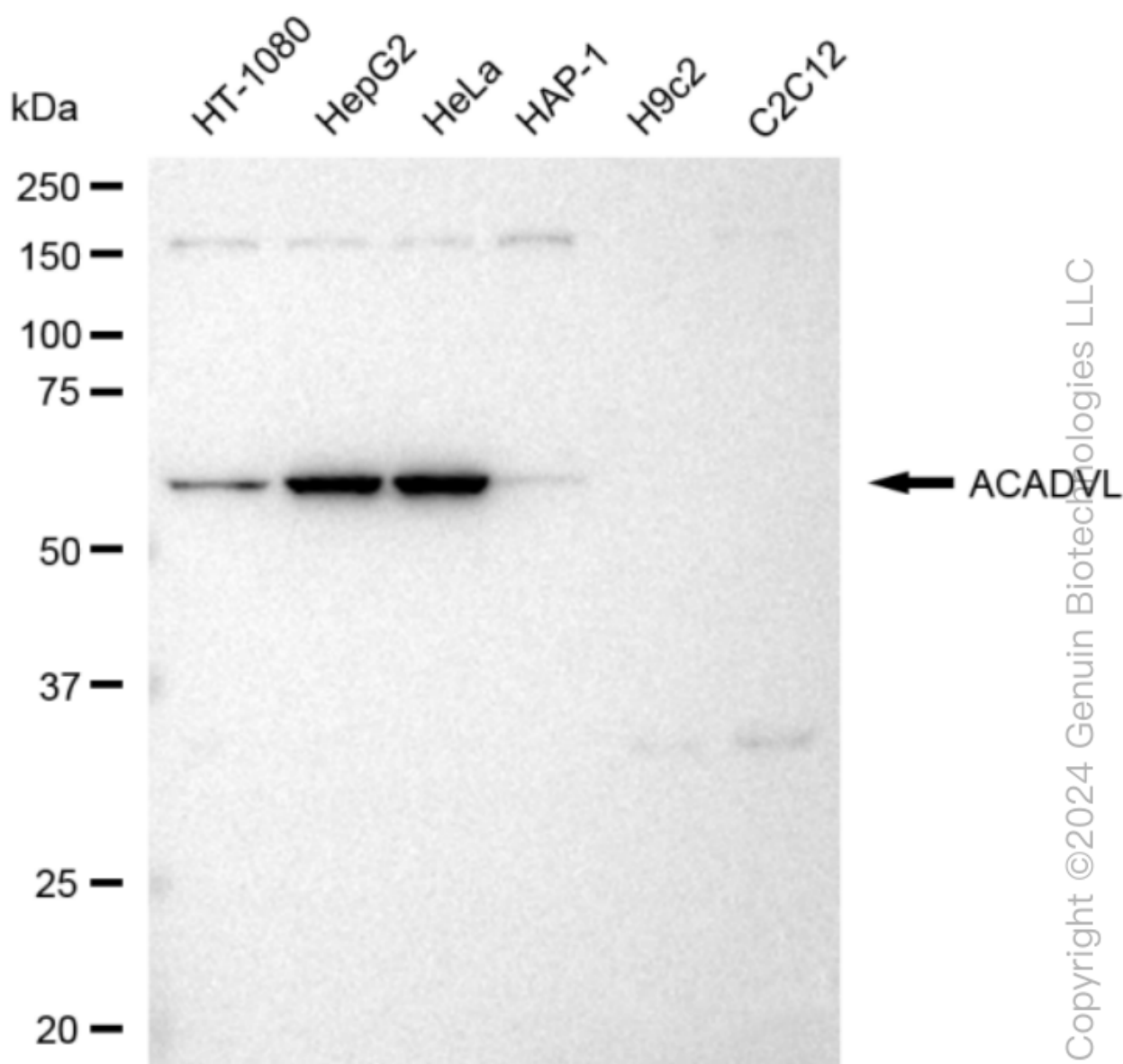
SUPPORT

SUPPORT@GENUINBIOTECH.COM
TEL: +1-540-855-7041

ORDERS

SALES@GENUINBIOTECH.COM
FAX: +1-540-855-7041

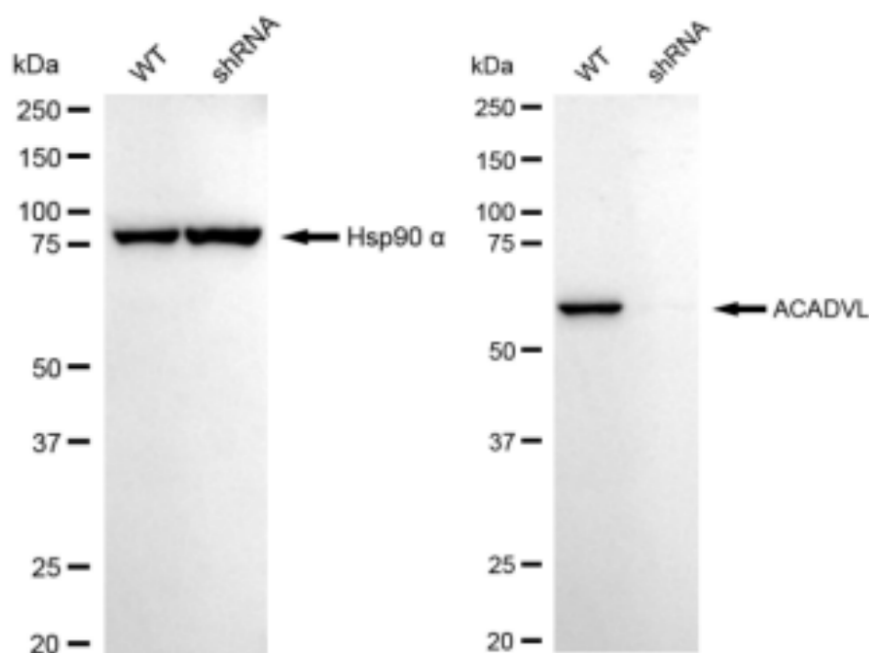
WWW.GENUINBIOTECH.COM



Western blotting analysis using anti-ACADVL antibody (Cat#61444). Total cell lysates (30 µg) from various cell lines were loaded and separated by SDS-PAGE. The blot was incubated with anti-ACADVL antibody (Cat#61444, 1:5,000) and HRP-conjugated goat anti-rabbit secondary antibody (Cat#201, 1:20,000) respectively. Image was developed using FeQ™ ECL Substrate Kit (Cat#226).

KD-Validated Anti-ACADVL Recombinant Rabbit Monoclonal Antibody

PAGE 4



Copyright ©2024 Genuin Biotechnologies LLC

Western blotting analysis using anti-ACADVL antibody (Cat#61444). ACADVL expression in wild type (WT) and ACADVL shRNA knockdown (KD) HeLa cells with 30 µg of total cell lysates. Hsp90 α serves as a loading control. The blot was incubated with anti-ACADVL antibody (Cat#61444, 1:5,000) and HRP-conjugated goat anti-rabbit secondary antibody (Cat#201, 1:20,000) respectively. Image was developed using FeQ™ ECL Substrate Kit (Cat#226).

SUPPORT

SUPPORT@GENUINBIOTECH.COM
TEL: +1-540-855-7041

ORDERS

SALES@GENUINBIOTECH.COM
FAX: +1-540-855-7041

WWW.GENUINBIOTECH.COM