

# KD-Validated Anti-HSPA14 Recombinant Rabbit Monoclonal Antibody



**Catalog #: 61445**

## Aliases

HSPA14; Heat Shock Protein Family A (Hsp70) Member 14; HSP70L1; HSP70-4; Heat Shock 70 KDa Protein 14; Heat Shock Protein HSP60; HSP70-Like Protein 1; Heat Shock Protein Hsp70-Related Protein; Heat Shock 70kDa Protein 14; MSANTD7; HSP60

## Background

Gene Name: HSPA14

NCBI Gene Entry: [51182](#)

UniProt Entry: [Q0VDF9](#)

## Application Information

Molecular Weight: Predicted, 55 kDa; observed, 50 kDa

Clonality: Rabbit monoclonal antibody

Clone ID: 25GB2540

Species Reactivity: Human, mouse, rat

Applications Tested: Western blotting (WB), flow cytometry (FCM), immunocytochemistry (IC)

## Immunogen

A synthesized peptide derived from human HSPA14

## Isotype

Rabbit IgG

## Storage Buffer

Supplied in PBS (pH 7.4) containing 50% glycerol, and 0.02% sodium azide.

## Storage

Store at -20 °C for one year.

## Recommended Dilutions

Western Blotting (WB): 1:1,000-1:5,000

Flow Cytometry (FCM): 1:2,000

Immunocytochemistry (IC): 1:100-1:1,000

**Note:** This product is for research use only.

---

### SUPPORT

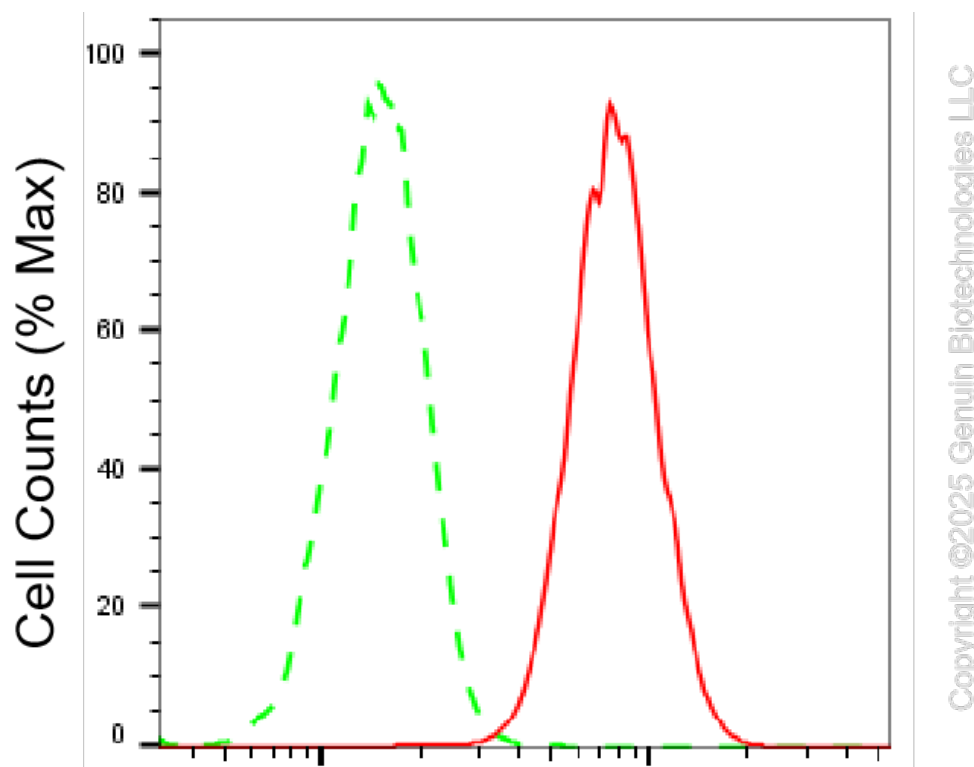
SUPPORT@GENUINBIOTECH.COM  
TEL: +1-540-855-7041

### ORDERS

SALES@GENUINBIOTECH.COM  
FAX: +1-540-855-7041

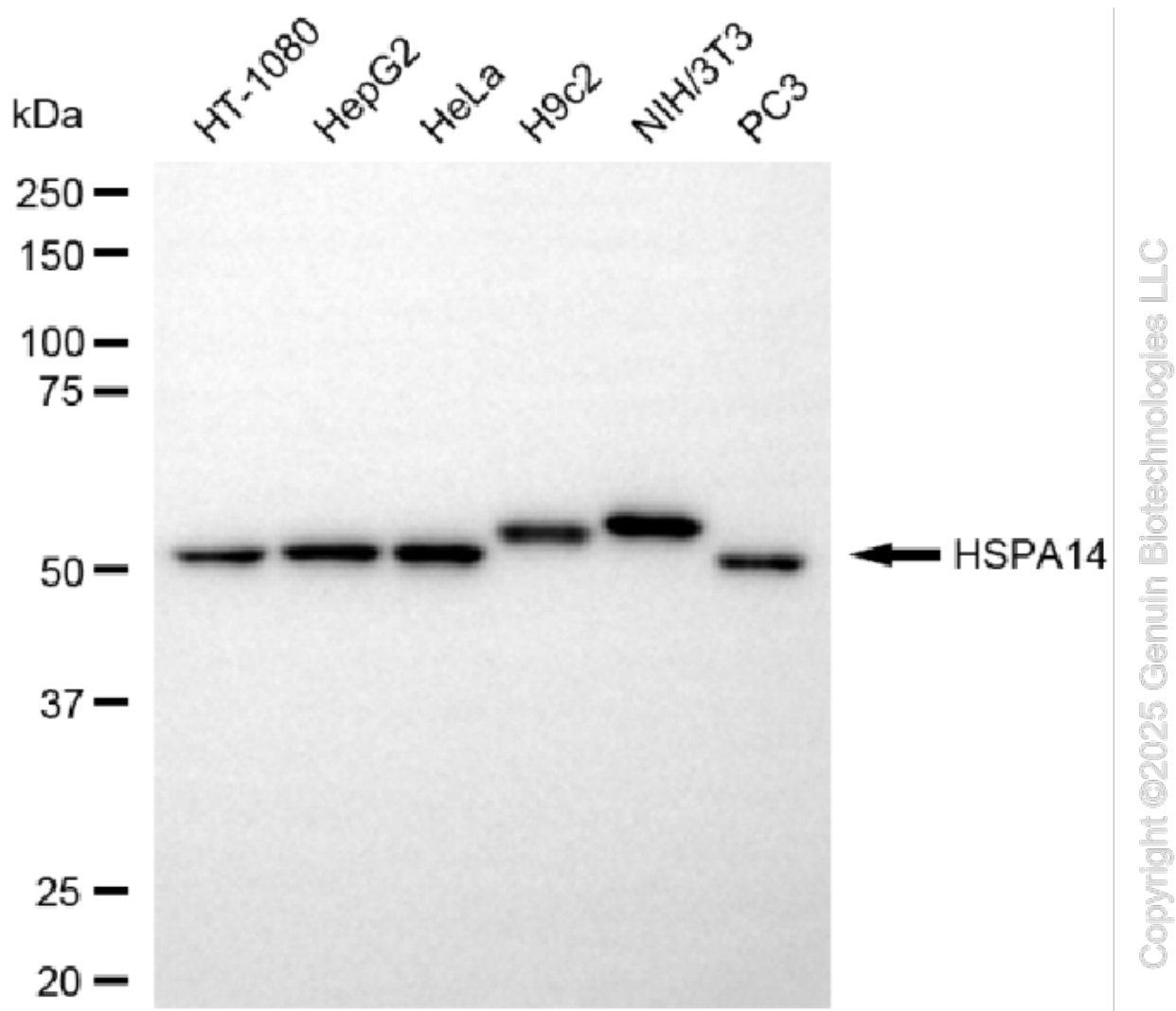
[WWW.GENUINBIOTECH.COM](http://WWW.GENUINBIOTECH.COM)

**Validation Data**

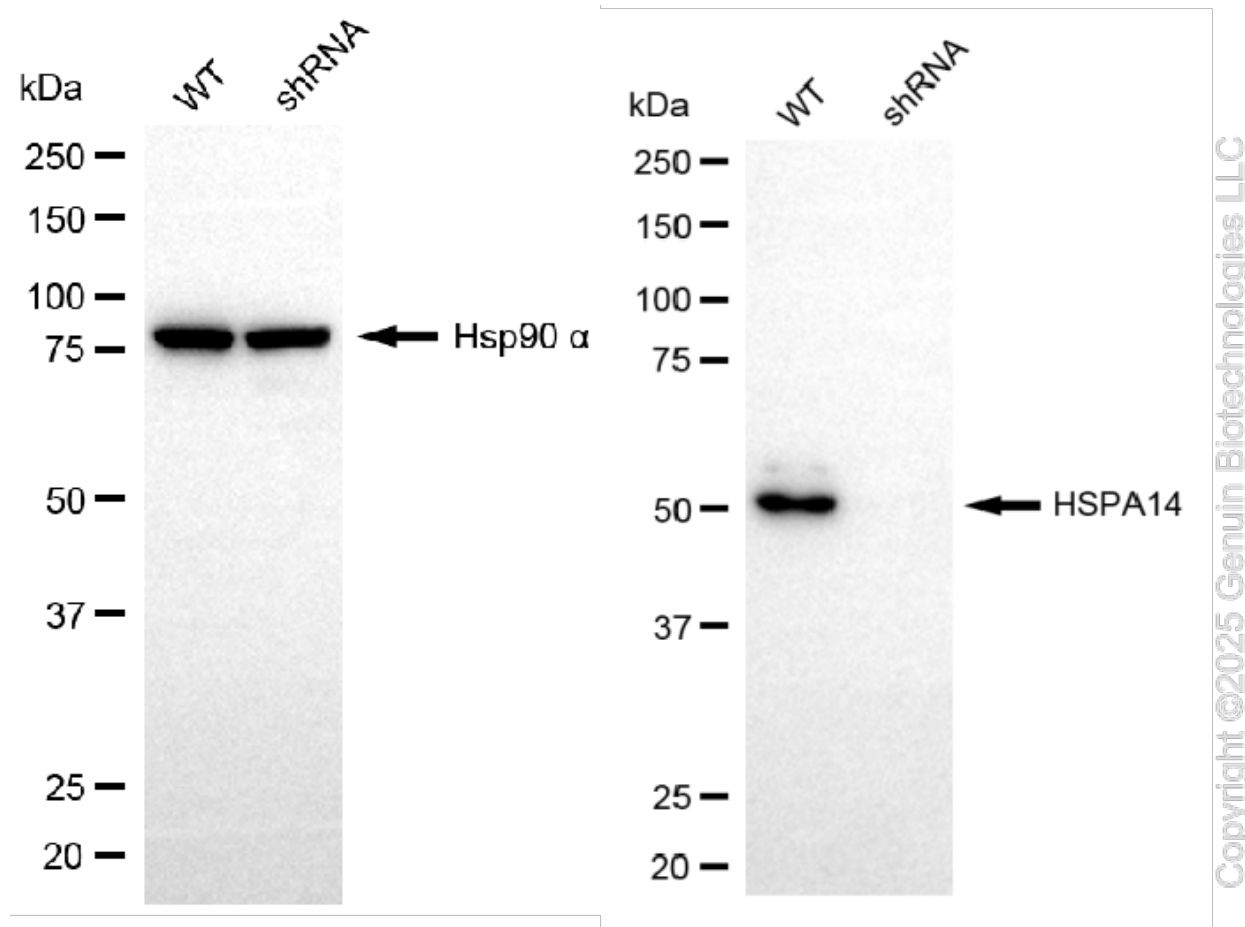


**HSPA14-Alexa Fluor® 647**

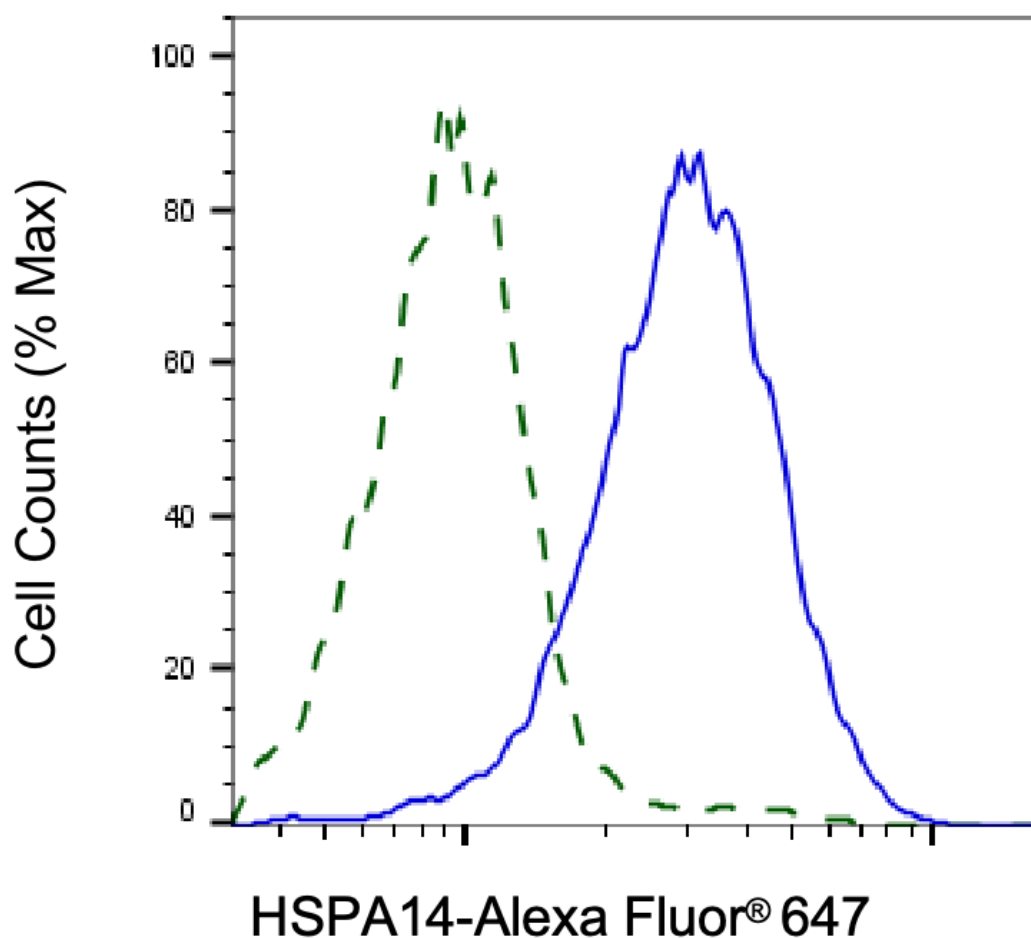
Flow cytometric analysis of HSPA14 expression in HAP-1 cells using HSPA14 antibody (Cat#61445, 1:2,000). Green, isotype control; red, HSPA14.



Western blotting analysis using anti-HSPA14 antibody (Cat#61445). Total cell lysates (20 µg) from various cell lines were loaded and separated by SDS-PAGE. The blot was incubated with anti-HSPA14 antibody (Cat#61445, 1:5,000) and HRP-conjugated goat anti-rabbit secondary antibody (Cat#201, 1:20,000) respectively. Image was developed using NaQ™ ECL Substrate Kit (Cat#716).

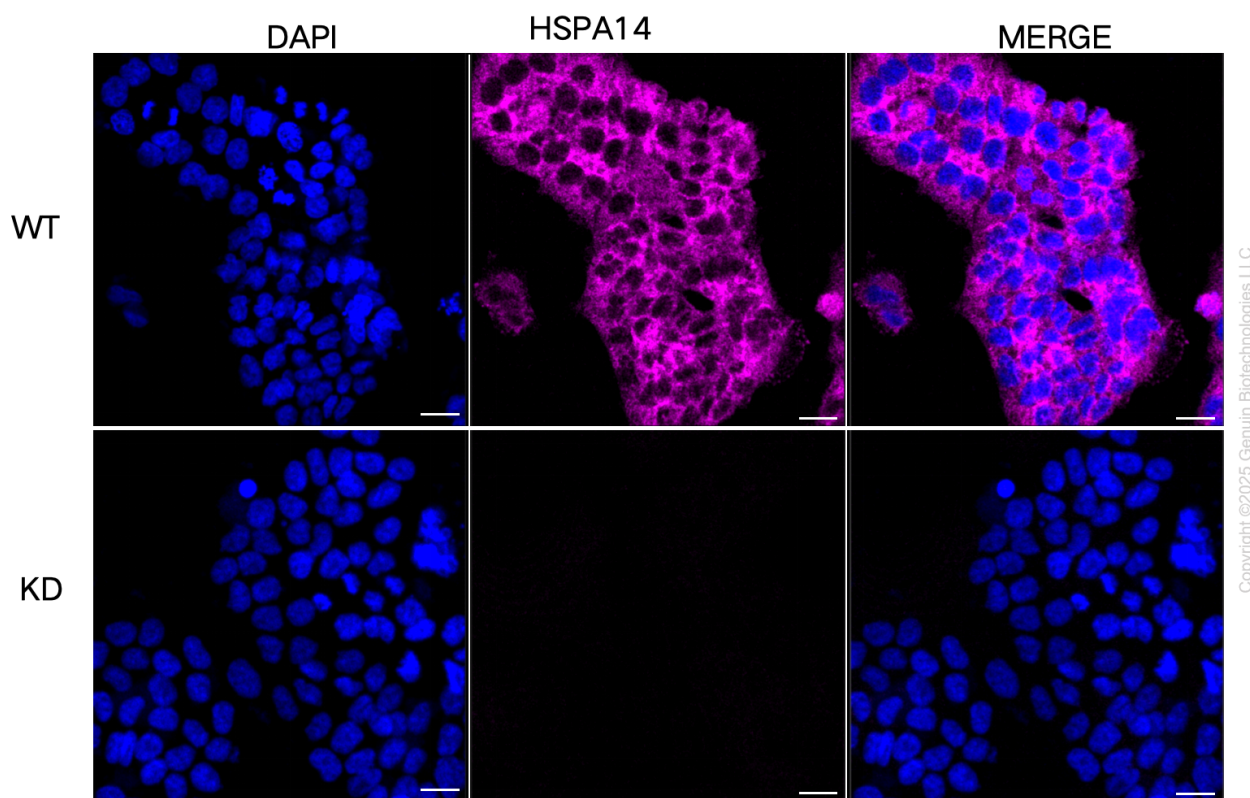


Western blotting analysis using anti-HSPA14 antibody (Cat#61445). HSPA14 expression in wild-type (WT) and HSPA14 shRNA knockdown (KD) HSHC cells with 20 µg of total cell lysates. Hsp90 α serves as a loading control. The blot was incubated with anti-HSPA14 antibody (Cat#61445, 1:5,000) and HRP-conjugated goat anti-rabbit secondary antibody (Cat#201, 1:20,000) respectively. Image was developed using FeQ™ ECL Substrate Kit (Cat#226).



Copyright ©2025 Genuin Biotechnologies LLC

Validation of HSPA14 knockdown using flow cytometry. Wild-type(WT, Blue) and knockdown(KD, Green) HSHC cells were stained with anti-HSPA14 antibody (Cat#61445, 1:2,000) and analyzed using BD flow cytometer.



Immunocytochemical staining of HSHC cells using anti-HSPA14 antibody (Cat#61445, 1:1,000), Top panel: wild-type (WT); Bottom panel: HSPA14 shRNA knockdown (KD). Nuclei were stained blue with DAPI; HSPA14 was stained magenta with Alexa Fluor® 647. Scale bar, 20  $\mu$ m.