

KD-Validated Anti-Cystathionine beta-synthase Recombinant Rabbit Monoclonal Antibody



Catalog #: 61446

Aliases

CBS; Cystathionine Beta-Synthase; HIP4; Serine Sulphydrase; Beta-Thionase; EC 4.2.1.22; Cystathionine Beta-Synthase-Like Protein; Cystathionine-Beta-Synthase; Methylcysteine Synthase; CBSL

Background

Gene Name: CBS

NCBI Gene Entry: [875](#)

UniProt Entry: [P35520](#)

Application Information

Molecular Weight: Predicted, 61 kDa, observed, 61 kDa

Clonality: Rabbit monoclonal antibody

Clone ID: 23GB3800

Species Reactivity: Human

Applications Tested: Western blotting (WB), flow cytometry (FCM), immunocytochemistry (IC)

Immunogen

A synthesized peptide derived from human CBS

Isotype

Rabbit IgG

Storage Buffer

Supplied in PBS (pH 7.4) containing 50% glycerol, and 0.02% sodium azide.

Storage

Store at -20 °C for one year.

Recommended Dilutions

Western Blotting (WB): 1:1,000-1:5,000

Flow Cytometry (FCM): 1:2,000

Immunocytochemistry (IC): 1:100-1:1,000

Note: This product is for research use only.

SUPPORT

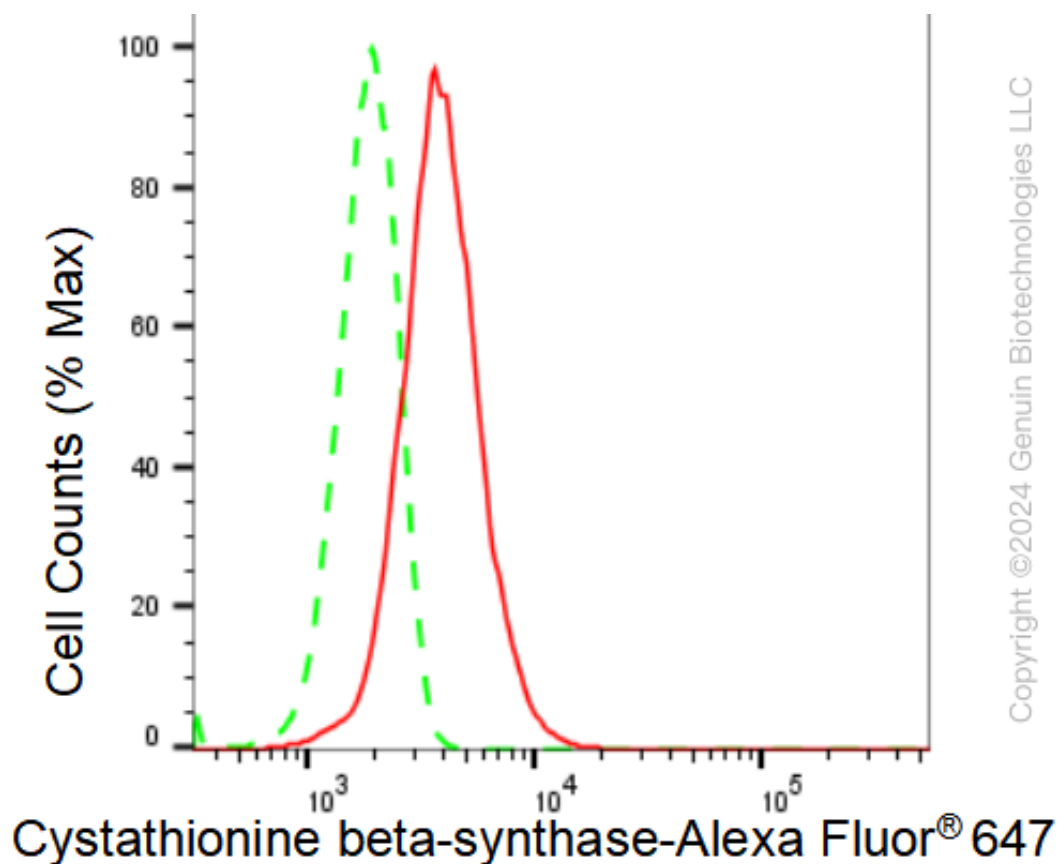
SUPPORT@GENUINBIOTECH.COM
TEL: +1-540-855-7041

ORDERS

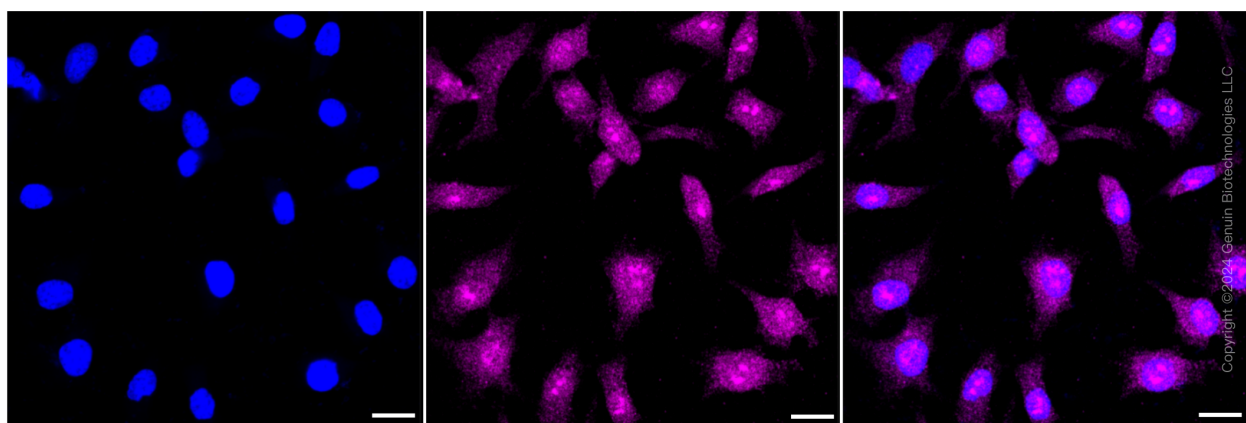
SALES@GENUINBIOTECH.COM
FAX: +1-540-855-7041

WWW.GENUINBIOTECH.COM

Validation Data



Flow cytometric analysis of Cystathionine beta-synthase expression in HeLa cells using Cystathionine beta-synthase antibody (Cat#61446, 1:2,000). Green, isotype control; red, Cystathionine beta-synthase.



Immunocytochemical staining of HeLa cells with Cystathionine beta-synthase antibody (Cat#61446, 1:1,000). Nuclei were stained blue with DAPI; Cystathionine beta-synthase was stained magenta with Alexa Fluor® 647. Images were taken using Leica stellaris 5. Protein abundance based on laser Intensity and smart gain: Medium. Scale bar: 20 μ m.

SUPPORT

SUPPORT@GENUINBIOTECH.COM
TEL: +1-540-855-7041

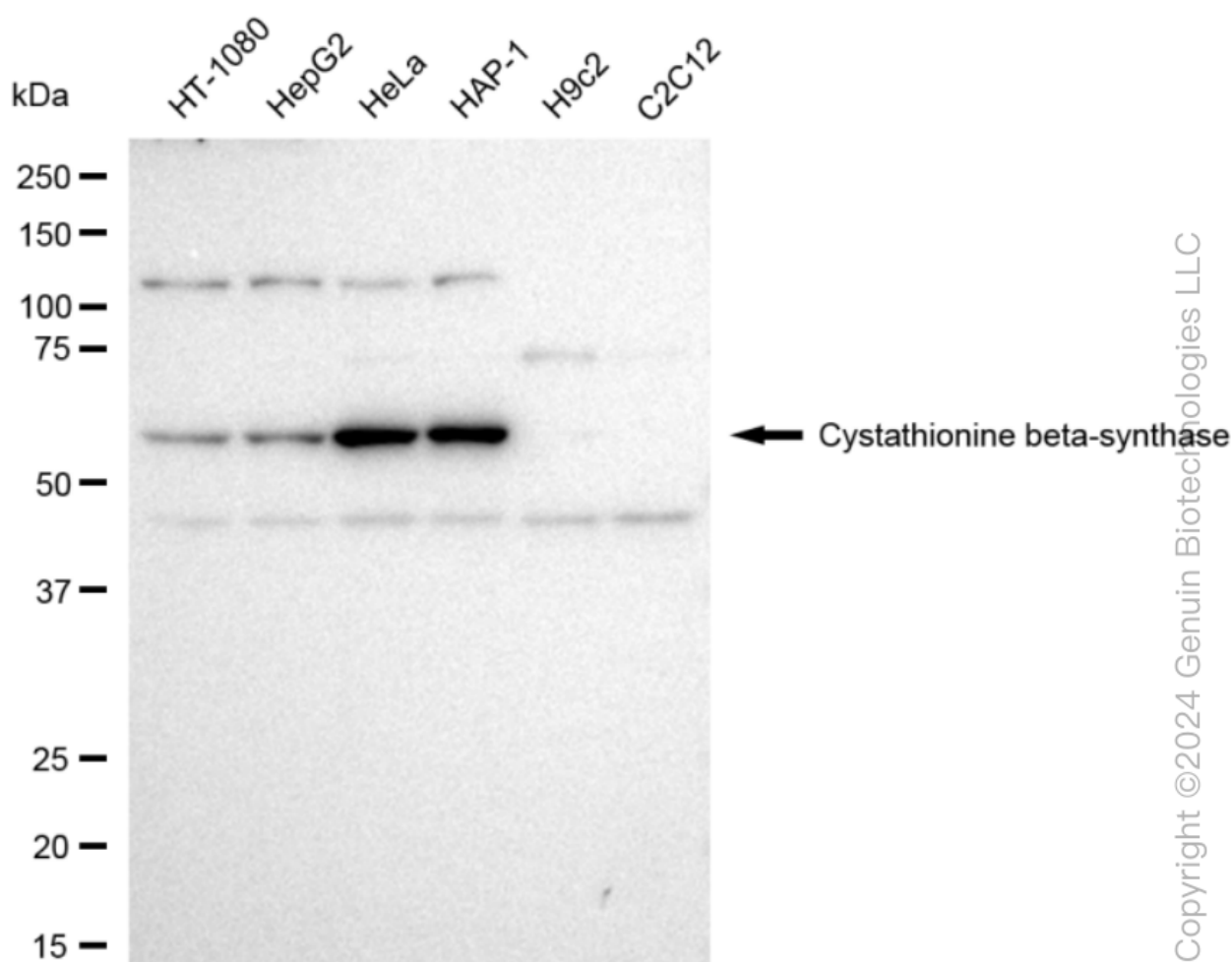
ORDERS

SALES@GENUINBIOTECH.COM
FAX: +1-540-855-7041

WWW.GENUINBIOTECH.COM

KD-Validated Anti-Cystathionine beta-synthase Recombinant Rabbit Monoclonal Antibody

PAGE 3



Western blotting analysis using anti-Cystathionine beta-synthase antibody (Cat#61446). Total cell lysates (30 µg) from various cell lines were loaded and separated by SDS-PAGE. The blot was incubated with anti-Cystathionine beta-synthase antibody (Cat#61446, 1:5,000) and HRP-conjugated goat anti-rabbit secondary antibody (Cat#201, 1:20,000) respectively. Image was developed using FeQ™ ECL Substrate Kit (Cat#226).

SUPPORT

SUPPORT@GENUINBIOTECH.COM
TEL: +1-540-855-7041

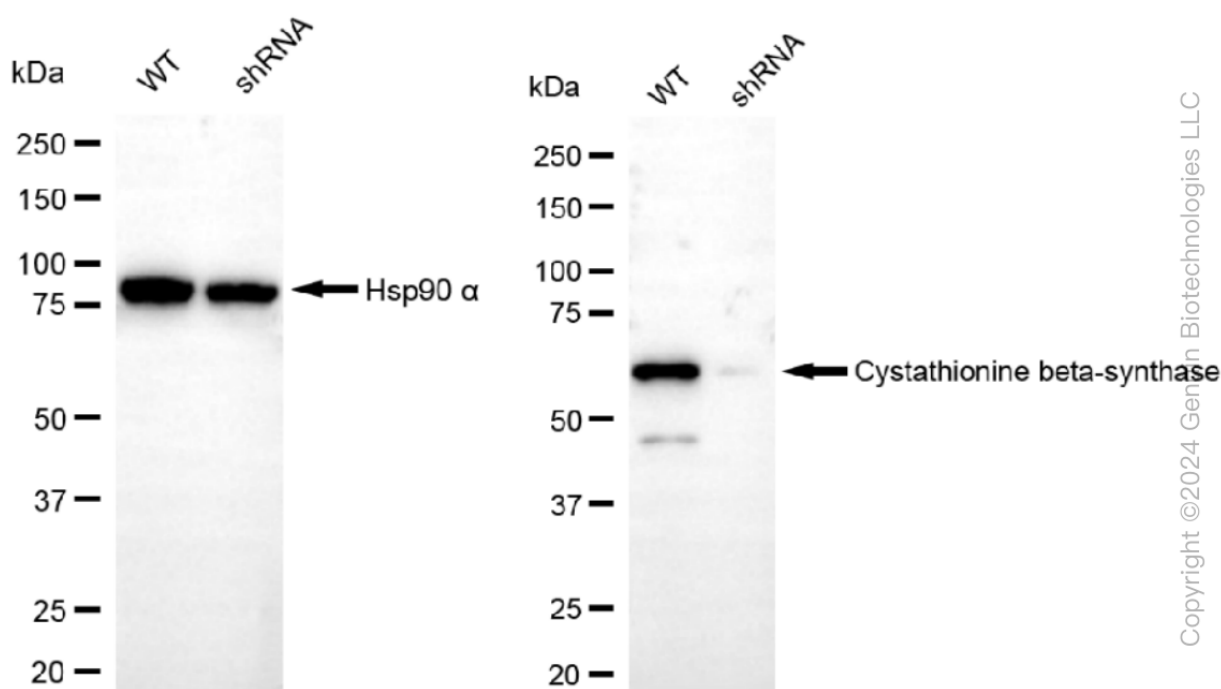
ORDERS

SALES@GENUINBIOTECH.COM
FAX: +1-540-855-7041

WWW.GENUINBIOTECH.COM

KD-Validated Anti-Cystathionine beta-synthase Recombinant Rabbit Monoclonal Antibody

PAGE 4



Western blotting analysis using anti-Cystathionine beta-synthase antibody (Cat#61446). Cystathionine beta-synthase expression in wild type (WT) and Cystathionine beta-synthase shRNA knockdown (KD) HeLa cells with 30 µg of total cell lysates. Hsp90 α serves as a loading control. The blot was incubated with anti-Cystathionine beta-synthase antibody (Cat#61446, 1:5,000) and HRP-conjugated goat anti-rabbit secondary antibody (Cat#201, 1:20,000) respectively. Image was developed using FeQ™ ECL Substrate Kit (Cat#226).

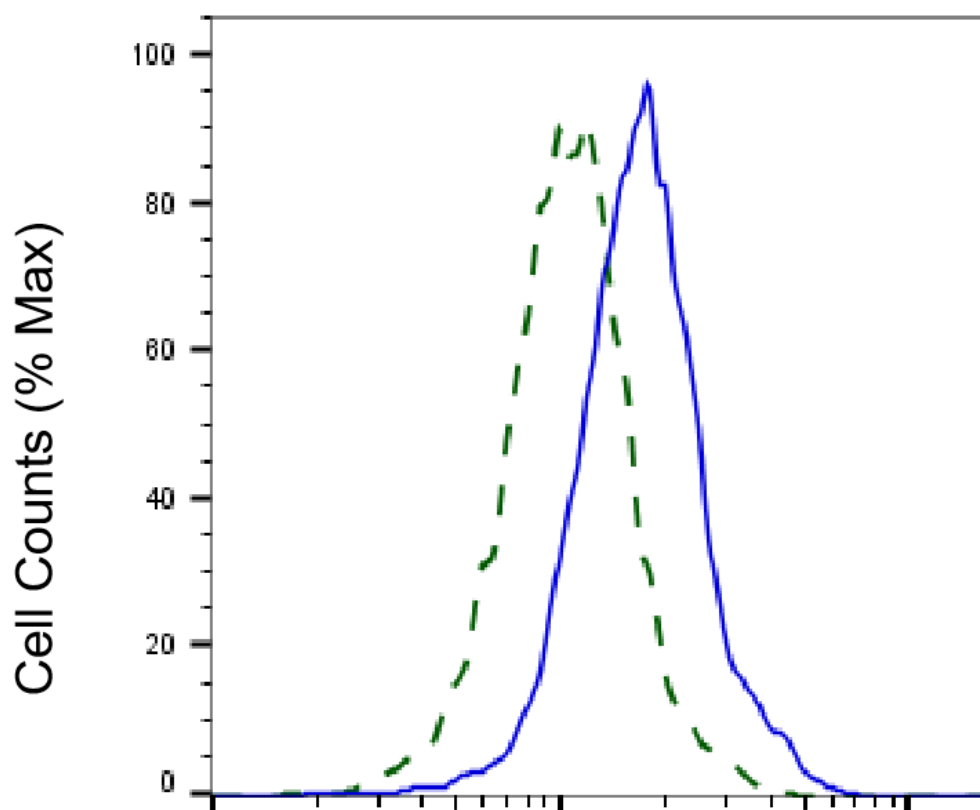
SUPPORT

SUPPORT@GENUINBIOTECH.COM
TEL: +1-540-855-7041

ORDERS

SALES@GENUINBIOTECH.COM
FAX: +1-540-855-7041

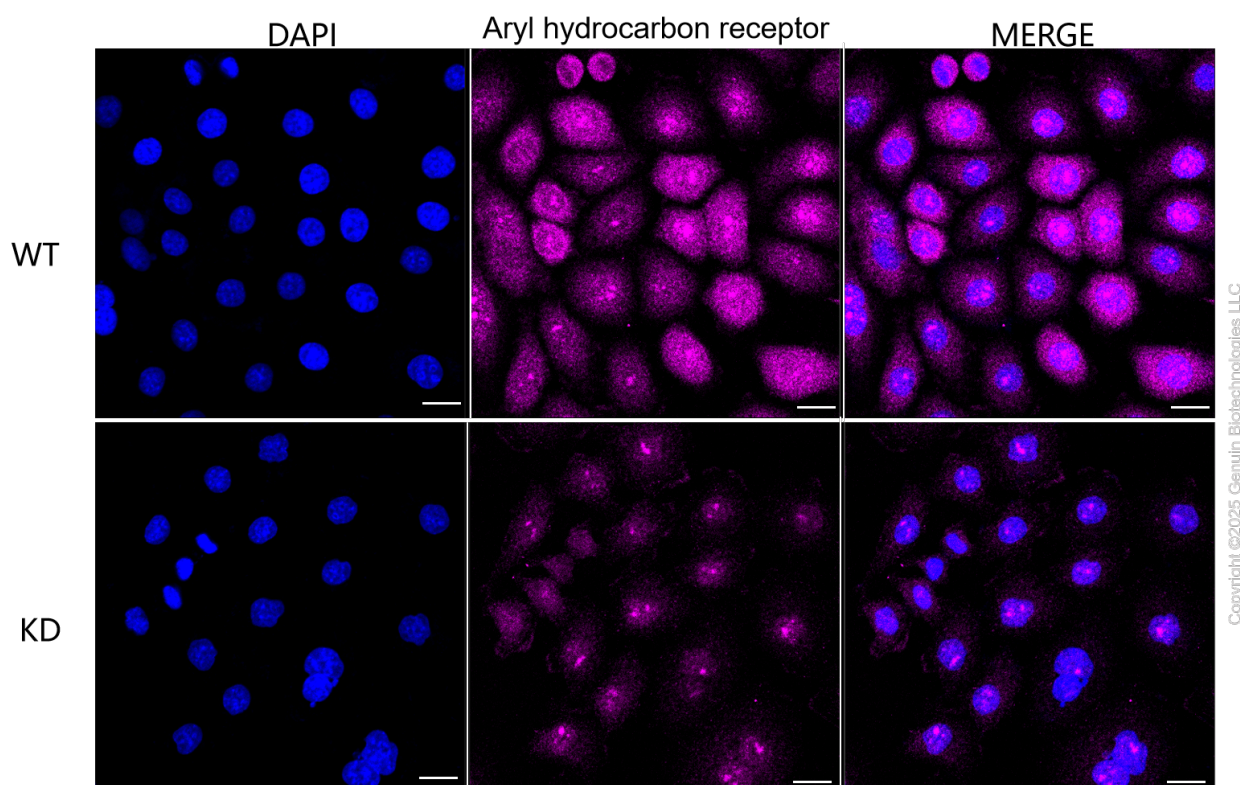
WWW.GENUINBIOTECH.COM



Copyright ©2025 Genuin Biotechnologies LLC

Cystathionine beta-synthase-Alexa Fluor® 647

Validation of Cystathionine beta-synthase knockdown using flow cytometry. Wild-type(WT, Blue) and knockdown(KD, Green) HeLa cells were stained with anti-Cystathionine beta-synthase antibody (Cat#61446, 1:2,000) and analyzed using BD flow cytometer.



Immunocytochemical staining of HeLa cells using anti-Aryl hydrocarbon receptor antibody (Cat#61446, 1:1,000), Top panel: wild-type (WT); Bottom panel: Aryl hydrocarbon receptor shRNA knockdown (KD). Nuclei were stained blue with DAPI; Aryl hydrocarbon receptor was stained magenta with Alexa Fluor® 647. Scale bar, 20 μ m. Permeabilization: Triton.