

KD-Validated Anti-Exosome component 7 Recombinant Rabbit Monoclonal Antibody



Catalog #: 61448

Aliases

EXOSC7; Exosome Component 7; RRP42; P8; KIAA0116; EAP1; Ribosomal RNA-Processing Protein 42; Exosome Complex Component RRP42; HRrp42p; Rrp42p; Exosome Complex Exonuclease RRP42; HRRP42P; RRP42P

Background

Gene Name: EXOSC7

NCBI Gene Entry: [23016](#)

UniProt Entry: [Q15024](#)

Application Information

Molecular Weight: Predicted, 32 kDa; observed, 32 kDa

Clonality: Rabbit monoclonal antibody

Clone ID: 25GB2550

Species Reactivity: Human, mouse, rat

Applications Tested: Western blotting (WB), flow cytometry (FCM), immunocytochemistry (IC)

Immunogen

A synthesized peptide derived from human EXOSC7

Isotype

Rabbit IgG

Storage Buffer

Supplied in PBS (pH 7.4) containing 50% glycerol, and 0.02% sodium azide.

Storage

Store at -20 °C for one year.

Recommended Dilutions

Western blotting (WB): 1:1,000-1:5,000

Flow Cytometry (FCM): 1:2,000

Immunocytochemistry (IC): 1:100-1:1,000

Note: This product is for research use only.

SUPPORT

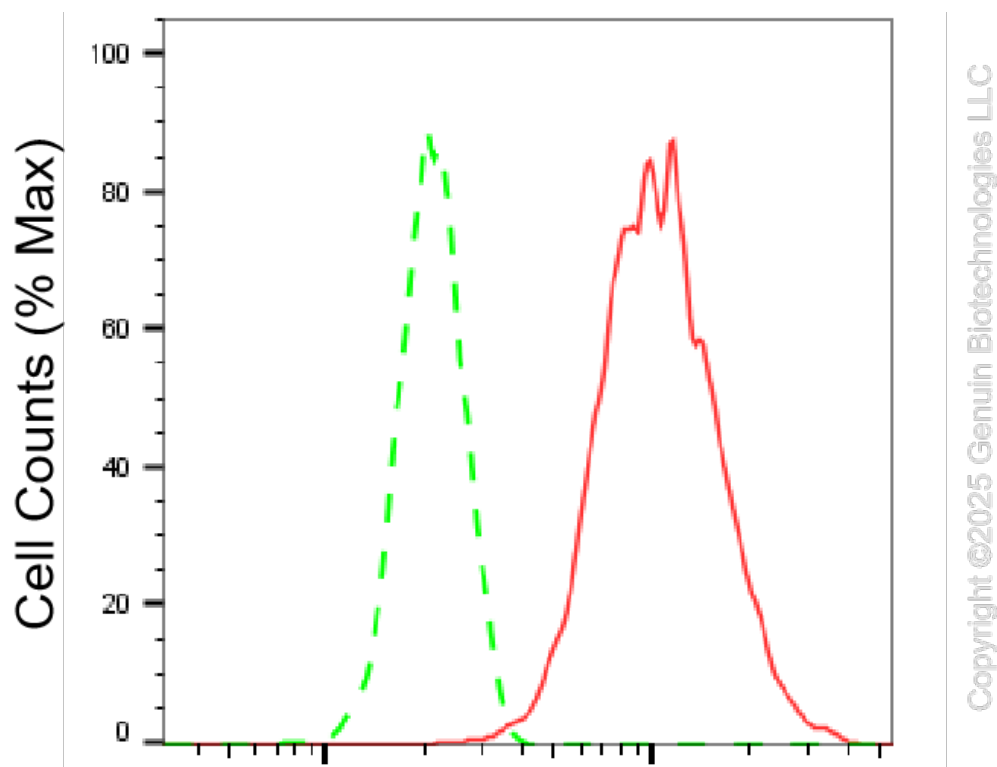
SUPPORT@GENUINBIOTECH.COM
TEL: +1-540-855-7041

ORDERS

SALES@GENUINBIOTECH.COM
FAX: +1-540-855-7041

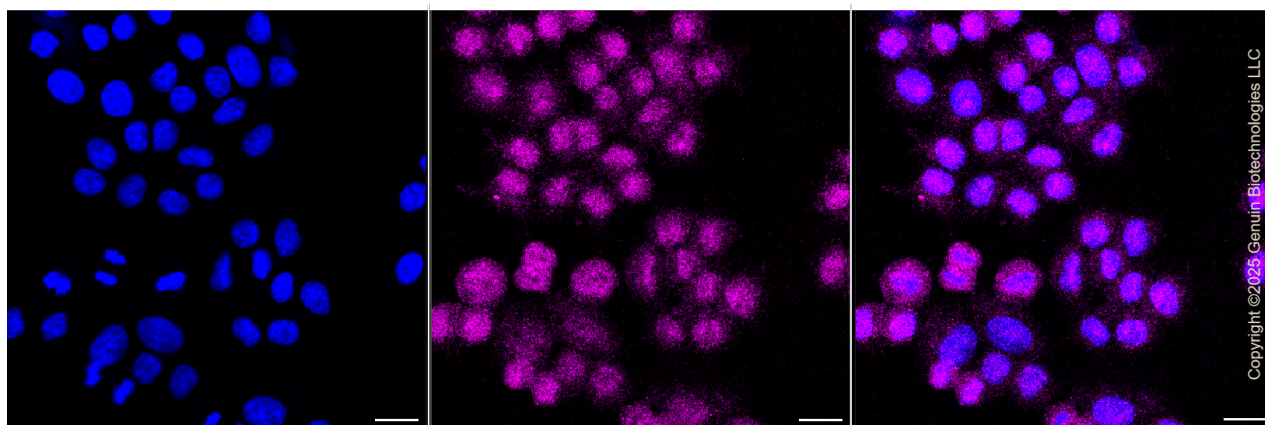
WWW.GENUINBIOTECH.COM

Validation Data



Exosome component 7-Alexa Fluor® 647

Flow cytometric analysis of Exosome component 7 expression in HepG2 cells using Exosome component 7 antibody (Cat#61448, 1:2,000). Green, isotype control; red, Exosome component 7.



Immunocytochemical staining of HepG2 cells with anti-Exosome component 7 antibody (Cat#61448, 1:1,000). Nuclei were stained blue with anti-DAPI; Exosome component 7 was stained magenta with Alexa Fluor® 647. Images were taken using Leica stellaris 5. Protein abundance based on laser Intensity and smart gain: Low. Scale bar, 20 µm.

SUPPORT

SUPPORT@GENUINBIOTECH.COM
TEL: +1-540-855-7041

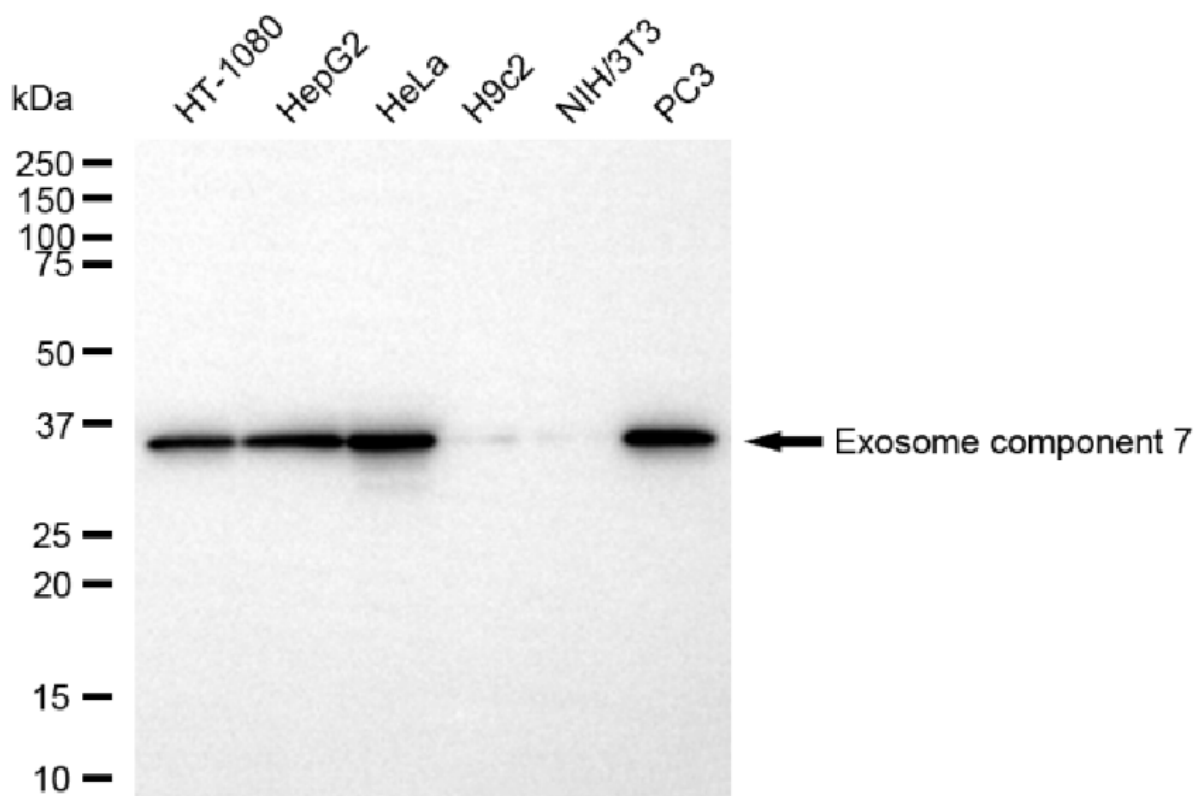
ORDERS

SALES@GENUINBIOTECH.COM
FAX: +1-540-855-7041

WWW.GENUINBIOTECH.COM

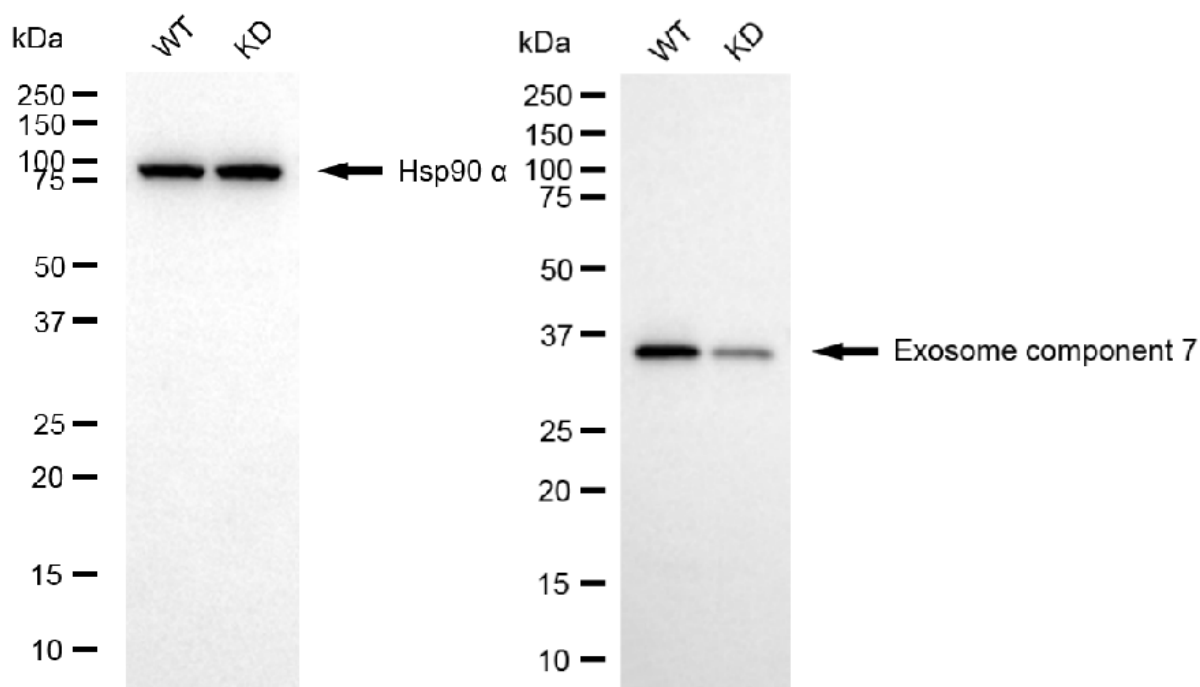
KD-Validated Anti-Exosome component 7 Recombinant Rabbit Monoclonal Antibody

PAGE 3



Copyright ©2025 Genuin Biotechnologies LLC

Western blotting analysis using anti-exosome component 7 antibody (Cat#61448). Total cell lysates (30 µg) from various cell lines were loaded and separated by SDS-PAGE. The blot was incubated with anti-exosome component 7 antibody (Cat#61448, 1:5,000) and HRP-conjugated goat anti-rabbit secondary antibody (Cat#201, 1:20,000) respectively. Image was developed using NaQ™ ECL Substrate Kit (Cat#716).



Copyright ©2025 Genuin Biotechnologies LLC

SUPPORT

SUPPORT@GENUINBIOTECH.COM
TEL: +1-540-855-7041

ORDERS

SALES@GENUINBIOTECH.COM
FAX: +1-540-855-7041

WWW.GENUINBIOTECH.COM

KD-Validated Anti-Exosome component 7 Recombinant Rabbit Monoclonal Antibody

PAGE 4

Western blotting analysis using anti-exosome component 7 antibody (Cat#61448). Exosome component 7 expression in wild-type (WT) and exosome component 7 (EXOSC7) knockdown (KD) HeLa cells with 10 µg of total cell lysates. Hsp90 α serves as a loading control. The blot was incubated with anti-exosome component 7 antibody (Cat#61448, 1:5,000) and HRP-conjugated goat anti-rabbit secondary antibody (Cat#201, 1:20,000) respectively. Image was developed using NaQ™ ECL Substrate Kit (Cat#716).

SUPPORT

SUPPORT@GENUINBIOTECH.COM
TEL: +1-540-855-7041

ORDERS

SALES@GENUINBIOTECH.COM
FAX: +1-540-855-7041

WWW.GENUINBIOTECH.COM