

# KD-Validated Anti-CD105 Recombinant Rabbit Monoclonal Antibody



**Catalog #: 61450**

## Aliases

ENG; Endoglin; END; HHT1; CD105 Antigen; CD105; ORW1; Osler-Rendu-Weber Syndrome 1; Soluble Endoglin; ORW

## Background

Gene Name: ENG

NCBI Gene Entry: [2022](#)

UniProt Entry: [P17813](#)

## Application Information

Molecular Weight: Predicted, 71 kDa, observed, 90 kDa

Clonality: Rabbit monoclonal antibody

Clone ID: 23GB3745

Species Reactivity: Human

Applications Tested: Western blotting (WB), immunocytochemistry (IC)

## Immunogen

A synthesized peptide derived from human CD105

## Isotype

Rabbit IgG

## Storage Buffer

Supplied in PBS (pH 7.4) containing 50% glycerol, and 0.02% sodium azide.

## Storage

Store at -20 °C for one year.

## Recommended Dilutions

Western Blotting (WB): 1:1,000-1:5,000

Immunocytochemistry (IC): 1:100-1:1,000

**Note:** This product is for research use only.

## Validation Data

---

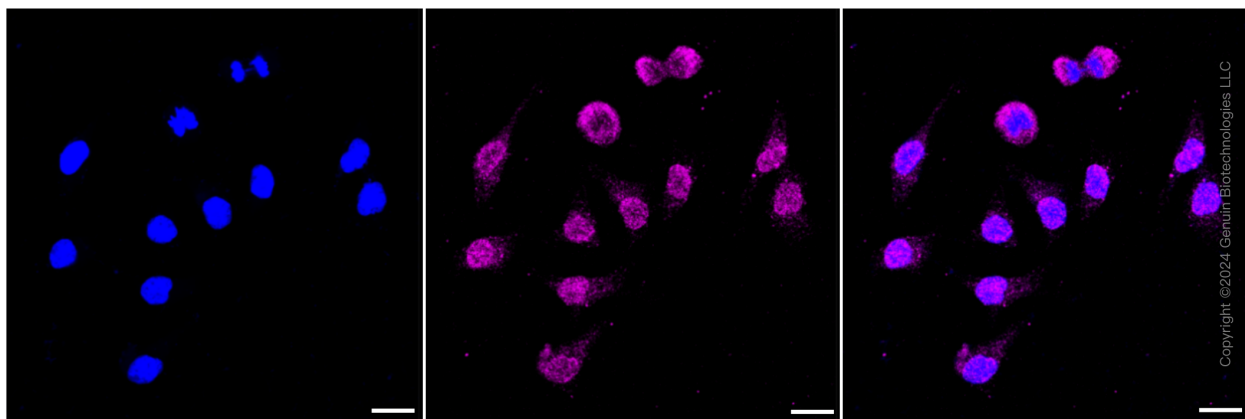
### SUPPORT

SUPPORT@GENUINBIOTECH.COM  
TEL: +1-540-855-7041

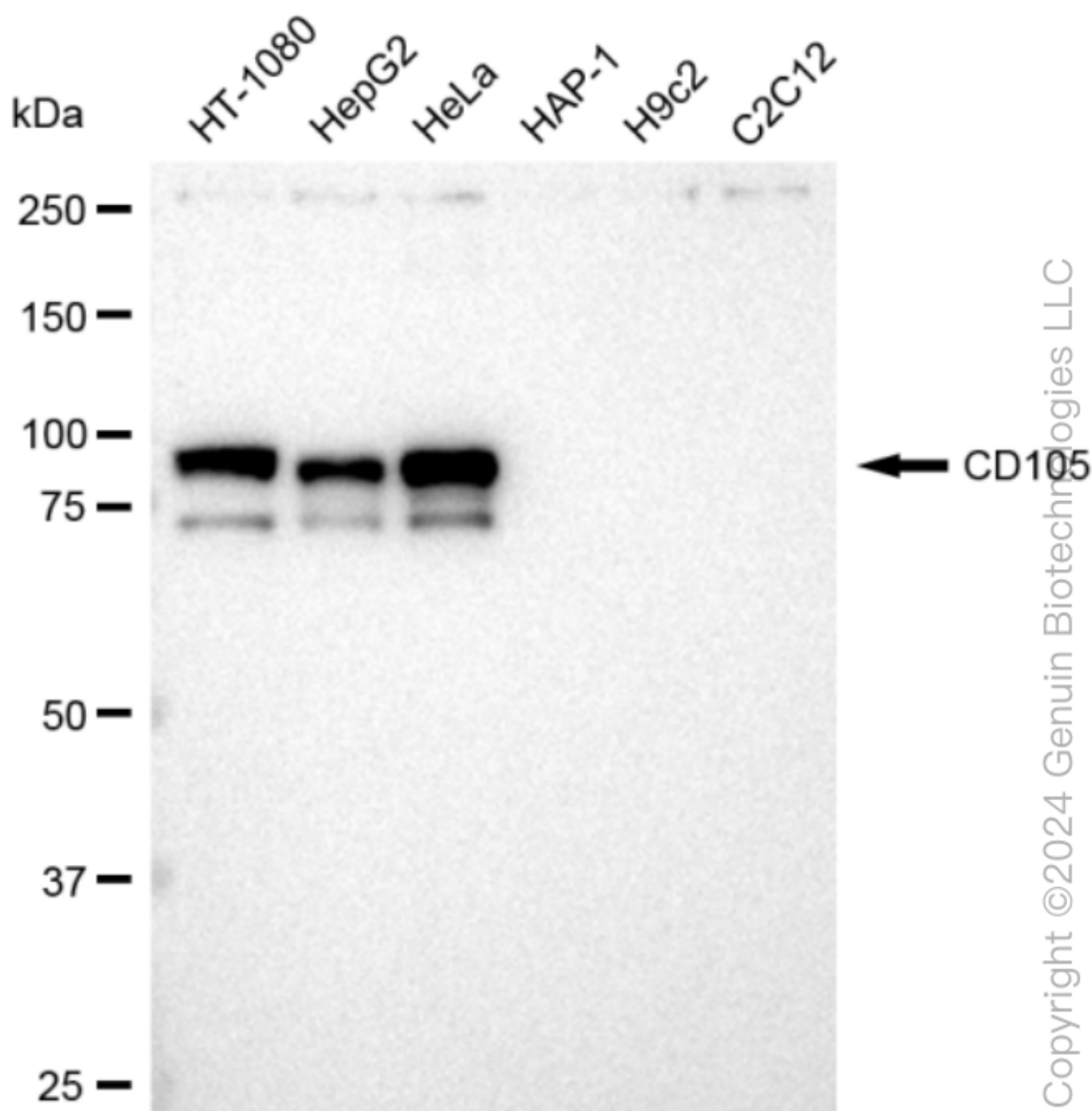
### ORDERS

SALES@GENUINBIOTECH.COM  
FAX: +1-540-855-7041

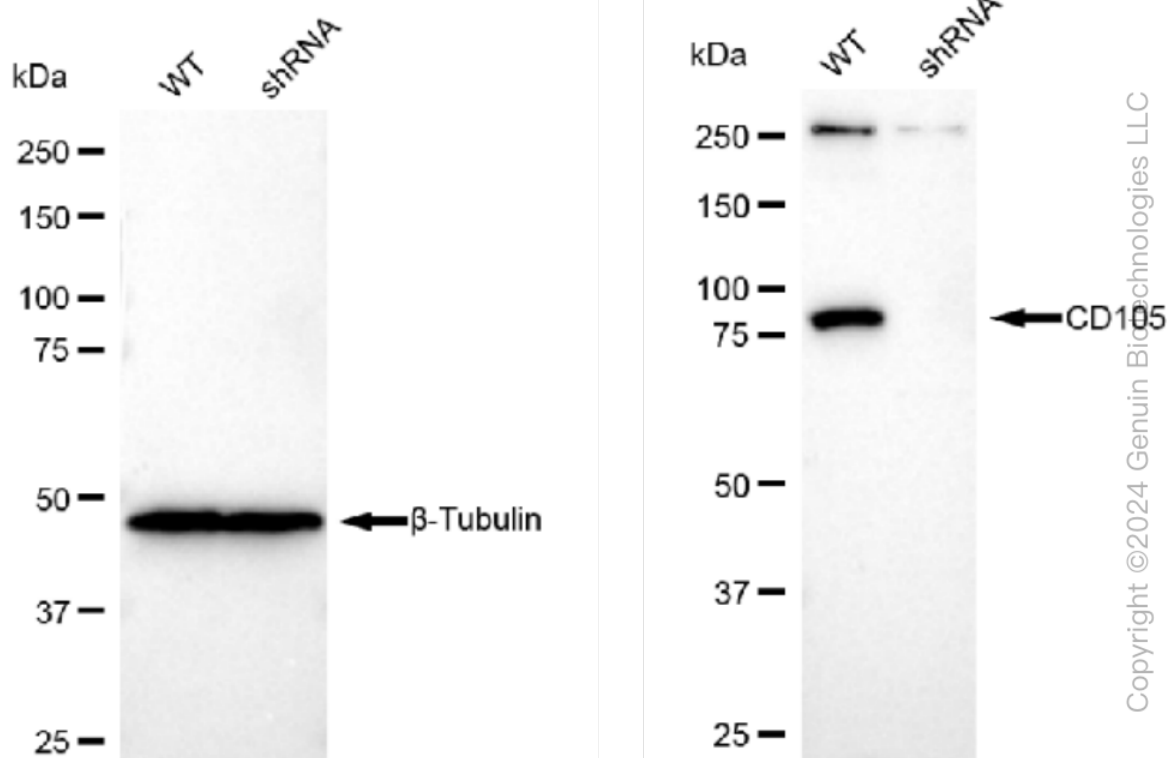
[WWW.GENUINBIOTECH.COM](http://WWW.GENUINBIOTECH.COM)



Immunocytochemical staining of HeLa cells with CD105 antibody (Cat#61450, 1:1,000). Nuclei were stained blue with DAPI; CD105 was stained magenta with Alexa Fluor® 647. Images were taken using Leica stellaris 5. Protein abundance based on laser Intensity and smart gain: Low. Scale bar: 20  $\mu$ m.



Western blotting analysis using anti-CD105 antibody (Cat#61450). Total cell lysates (30  $\mu$ g) from various cell lines were loaded and separated by SDS-PAGE. The blot was incubated with anti-CD105 antibody (Cat#61450, 1:5,000) and HRP-conjugated goat anti-rabbit secondary antibody (Cat#201, 1:20,000) respectively. Image was developed using FeQ™ ECL Substrate Kit (Cat#226).



Western blotting analysis using anti-CD105 antibody (Cat#61450). CD105 expression in wild type (WT) and CD105 shRNA knockdown (KD) HeLa cells with 30  $\mu$ g of total cell lysates.  $\beta$ -Tubulin serves as a loading control. The blot was incubated with anti-CD105 antibody (Cat#61450, 1:5,000) and HRP-conjugated goat anti-rabbit secondary antibody (Cat#201, 1:20,000) respectively. Image was developed using FeQ™ ECL Substrate Kit (Cat#226).