

KD-Validated Anti-Phospho-c-Myc (S62) Recombinant Rabbit Monoclonal Antibody



Catalog #: 61451

Aliases

MYC Proto-Oncogene, BHLH Transcription Factor; BHLHe39; C-Myc; MYCC; V-Myc Avian Myelocytomatosis Viral Oncogene Homolog; Class E Basic Helix-Loop-Helix Protein 39; Myc Proto-Oncogene Protein; Transcription Factor P64; Proto-Oncogene C-Myc; Myc-Related Translation/Localization Regulatory Factor; Avian Myelocytomatosis Viral Oncogene Homolog; V-Myc Myelocytomatosis Viral Oncogene Homolog; BHLHE39; MRTL

Background

Gene Name: MYC

NCBI Gene Entry: [4609](#)

UniProt Entry: [P01106](#)

Application Information

Molecular Weight: Predicted, 51 kDa, observed, 57 kDa

Clonality: Rabbit monoclonal antibody

Clone ID: 25GB2565

Species Reactivity: Human, mouse, rat

Applications Tested: Western blotting (WB), flow cytometry (FCM), immunocytochemistry (IC)

Immunogen

A synthesized peptide derived from human Phospho-c-Myc (S62)

Isotype

Rabbit IgG

Storage Buffer

Supplied in PBS (pH 7.4) containing 50% glycerol, and 0.02% sodium azide.

Storage

Store at -20 °C for one year.

Recommended Dilutions

Western blotting (WB): 1:1,000-1:5,000

Flow Cytometry (FCM): 1:2,000

Immunocytochemistry (IC): 1:100-1:1,000

SUPPORT

SUPPORT@GENUINBIOTECH.COM
TEL: +1-540-855-7041

ORDERS

SALES@GENUINBIOTECH.COM
FAX: +1-540-855-7041

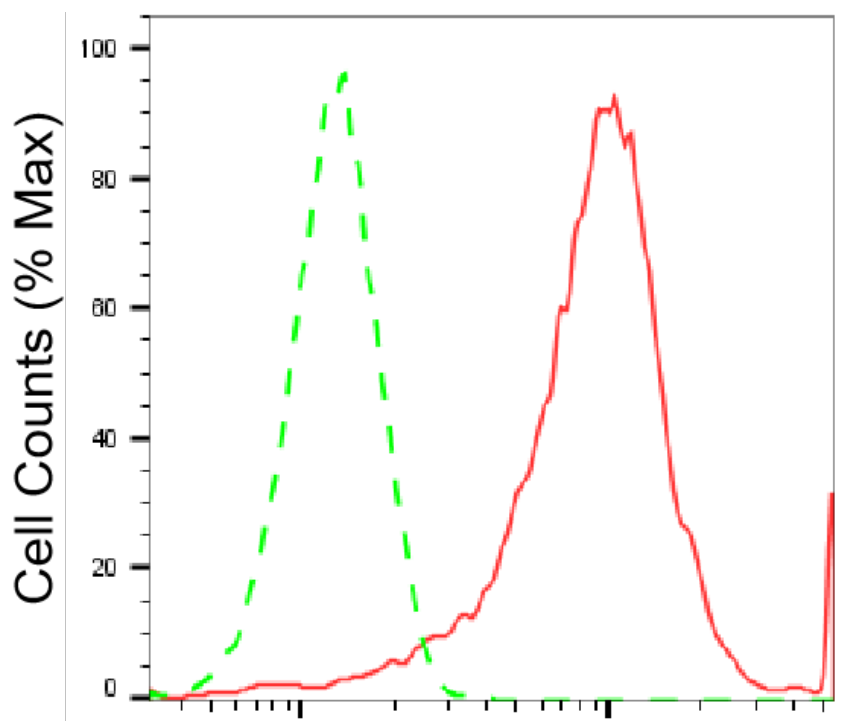
WWW.GENUINBIOTECH.COM

KD-Validated Anti-Phospho-c-Myc (S62) Recombinant Rabbit Monoclonal Antibody

PAGE 2

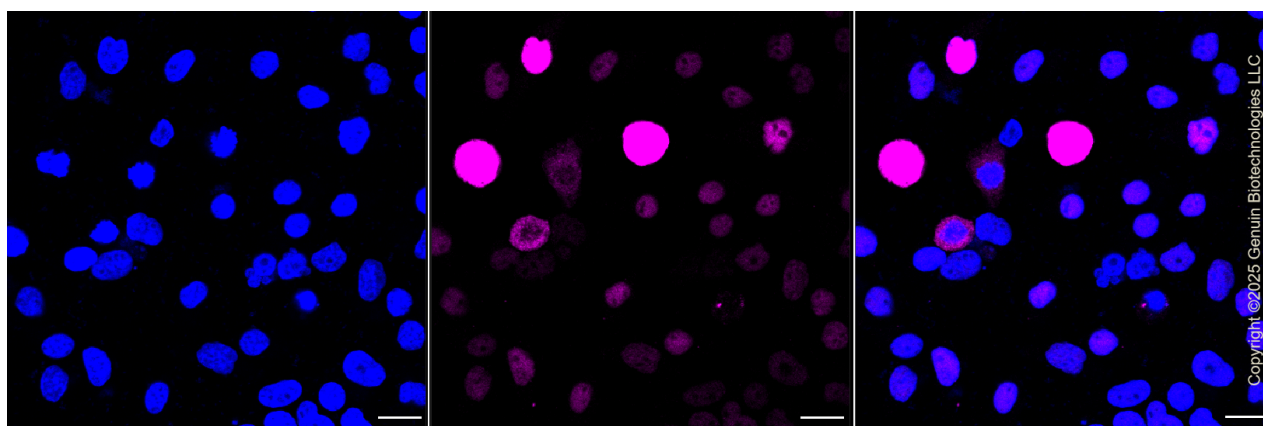
Note: This product is for research use only.

Validation Data



Phospho-c-Myc (S62)-Alexa Fluor® 647

Flow cytometric analysis of Phospho-c-Myc (S62) expression in HeLa cells using Phospho-c-Myc (S62) antibody (Cat#61451, 1:2,000). Green, isotype control; red, Phospho-c-Myc (S62).



Immunocytochemical staining of HeLa cells with anti-Phospho-c-Myc (S62) antibody (Cat#61451, 1:1,000). Nuclei were stained blue with DAPI; Phospho-c-Myc (S62) was stained magenta with Alexa Fluor® 647. Images were taken using Leica stellaris 5. Protein abundance based on laser Intensity and smart gain: Medium. Scale bar, 20 μ m.

SUPPORT

SUPPORT@GENUINBIOTECH.COM
TEL: +1-540-855-7041

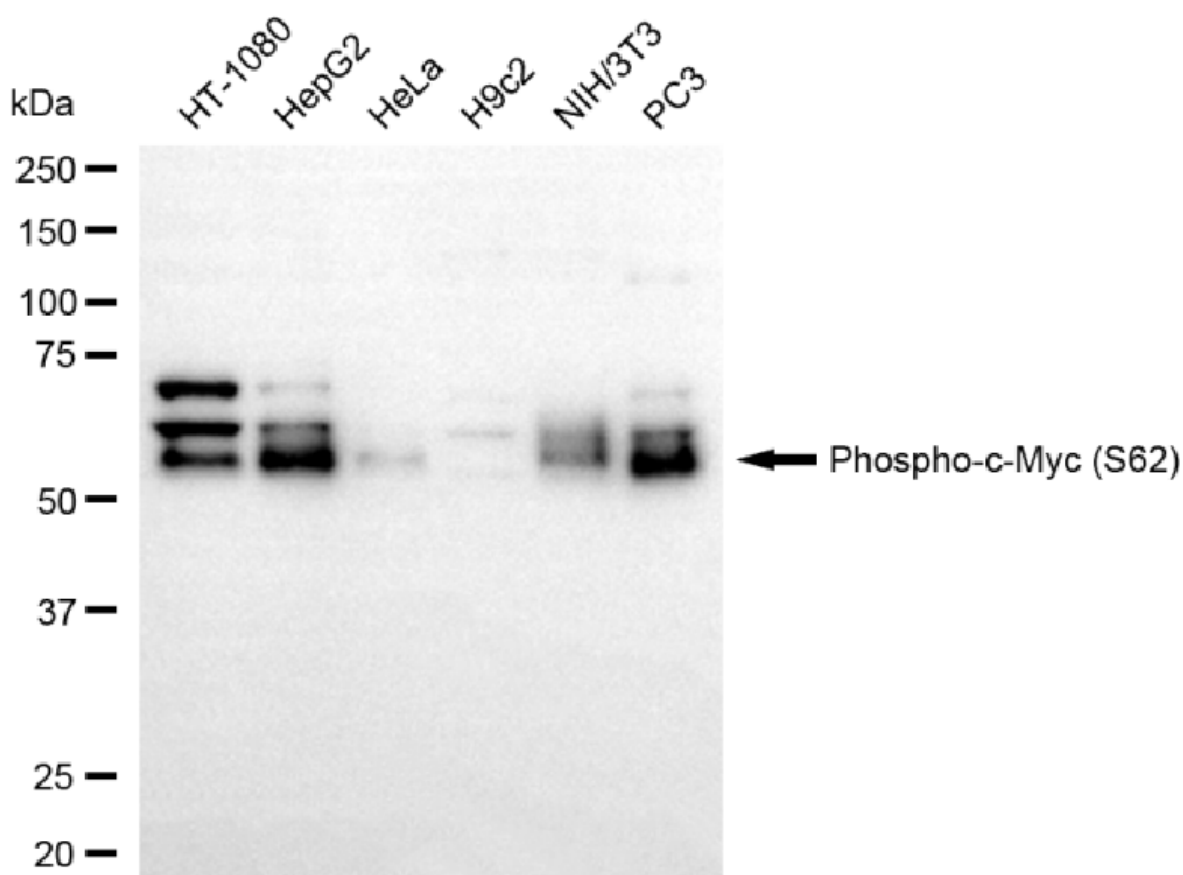
ORDERS

SALES@GENUINBIOTECH.COM
FAX: +1-540-855-7041

WWW.GENUINBIOTECH.COM

KD-Validated Anti-Phospho-c-Myc (S62) Recombinant Rabbit Monoclonal Antibody

PAGE 3



Copyright ©2025 Genuin Biotechnologies LLC

Western blotting analysis using anti-phospho-c-Myc (S62) antibody (Cat#61451). Total cell lysates (30 μ g) from various cell lines were loaded and separated by SDS-PAGE. The blot was incubated with anti-phospho-c-Myc (S62) antibody (Cat#61451, 1:5,000) and HRP-conjugated goat anti-rabbit secondary antibody (Cat#201, 1:20,000) respectively. Image was developed using NaQ™ ECL Substrate Kit (Cat#716).

SUPPORT

SUPPORT@GENUINBIOTECH.COM
TEL: +1-540-855-7041

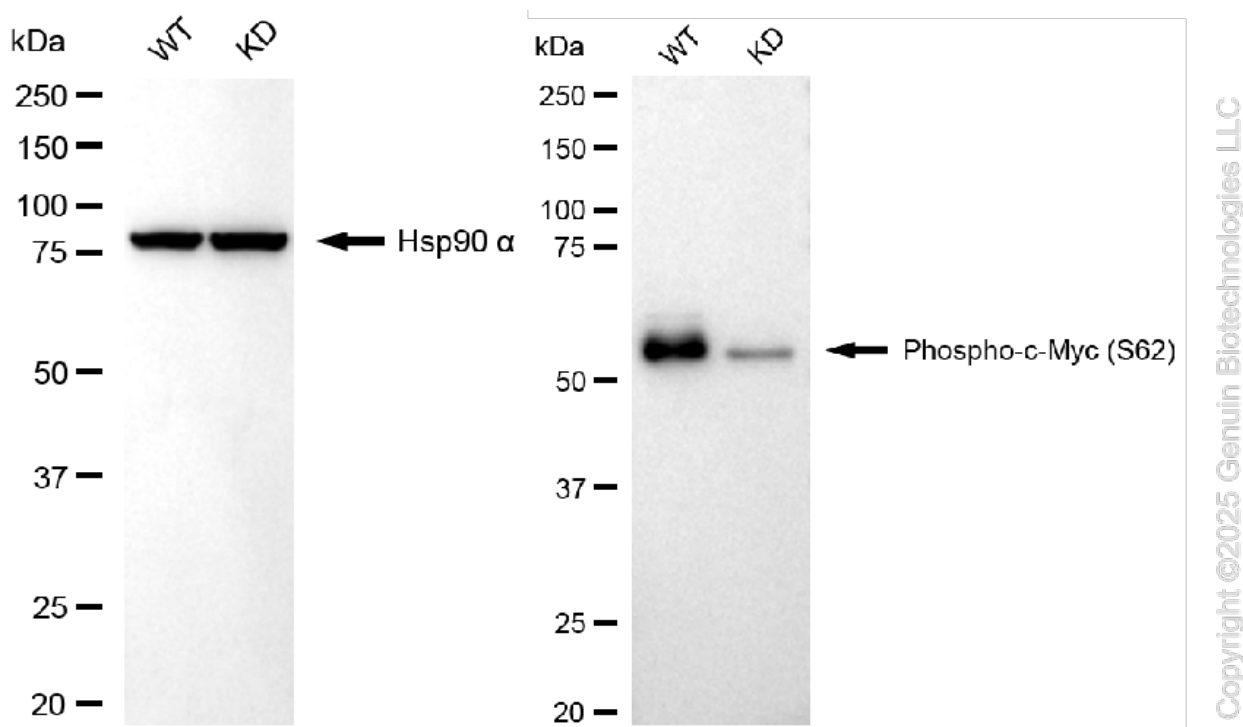
ORDERS

SALES@GENUINBIOTECH.COM
FAX: +1-540-855-7041

WWW.GENUINBIOTECH.COM

KD-Validated Anti-Phospho-c-Myc (S62) Recombinant Rabbit Monoclonal Antibody

PAGE 4



Western blotting analysis using anti-phospho-c-Myc (S62) antibody (Cat#61451). Phospho-c-Myc (S62) expression in wild type (WT) and MYC knockdown (KD) HSHC cells with 20 µg of total cell lysates. Hsp90 α serves as a loading control. The blot was incubated with anti-phospho-c-Myc (S62) antibody (Cat#61451, 1:5,000) and HRP-conjugated goat anti-rabbit secondary antibody (Cat#201, 1:20,000) respectively. Image was developed using NaQ™ ECL Substrate Kit (Cat#716).

SUPPORT

SUPPORT@GENUINBIOTECH.COM
TEL: +1-540-855-7041

ORDERS

SALES@GENUINBIOTECH.COM
FAX: +1-540-855-7041

WWW.GENUINBIOTECH.COM