

KD-Validated Anti-AP2S1 Recombinant Rabbit Monoclonal Antibody



Catalog #: 61452

Aliases

AP2S1; Adaptor Related Protein Complex 2 Subunit Sigma 1; CLAPS2; FBH3; Adaptor Related Protein Complex 2 Sigma 1 Subunit; Clathrin Assembly Protein 2 Sigma Small Chain; Plasma Membrane Adaptor AP-2 17 KDa Protein; Adaptor Protein Complex AP-2 Subunit Sigma; Clathrin Coat-Associated Protein AP17; Clathrin Coat Assembly Protein AP17; AP-2 Complex Subunit Sigma; HA2 17 KDa Subunit; Sigma2-Adaptin; Sigma-2; FBHOk; AP17; HHC3; Clathrin-Associated/Assembly/Adaptor Protein, Small 2 (17kD); Adaptor-Related Protein Complex 2 Subunit Sigma; Hypocalciuric Hypercalcemia 3 (Oklahoma Type) 2; FBHOK

Background

Gene Name: AP2S1

NCBI Gene Entry: [1175](#)

UniProt Entry: [P53680](#)

Application Information

Molecular Weight: Predicted, 17 kDa, observed, 17 kDa

Clonality: Rabbit monoclonal antibody

Clone ID: 23GB3660

Species Reactivity: Human, mouse, rat

Applications Tested: Western blotting (WB), flow cytometry (FCM), immunocytochemistry (IC)

Immunogen

A synthesized peptide derived from human AP2S1

Isotype

Rabbit IgG

Storage Buffer

Supplied in PBS (pH 7.4) containing 50% glycerol, and 0.02% sodium azide.

Storage

Store at -20 °C for one year.

Recommended Dilutions

Western Blotting (WB): 1:1,000-1:5,000

Flow Cytometry (FCM): 1:2,000

SUPPORT

SUPPORT@GENUINBIOTECH.COM
TEL: +1-540-855-7041

ORDERS

SALES@GENUINBIOTECH.COM
FAX: +1-540-855-7041

WWW.GENUINBIOTECH.COM

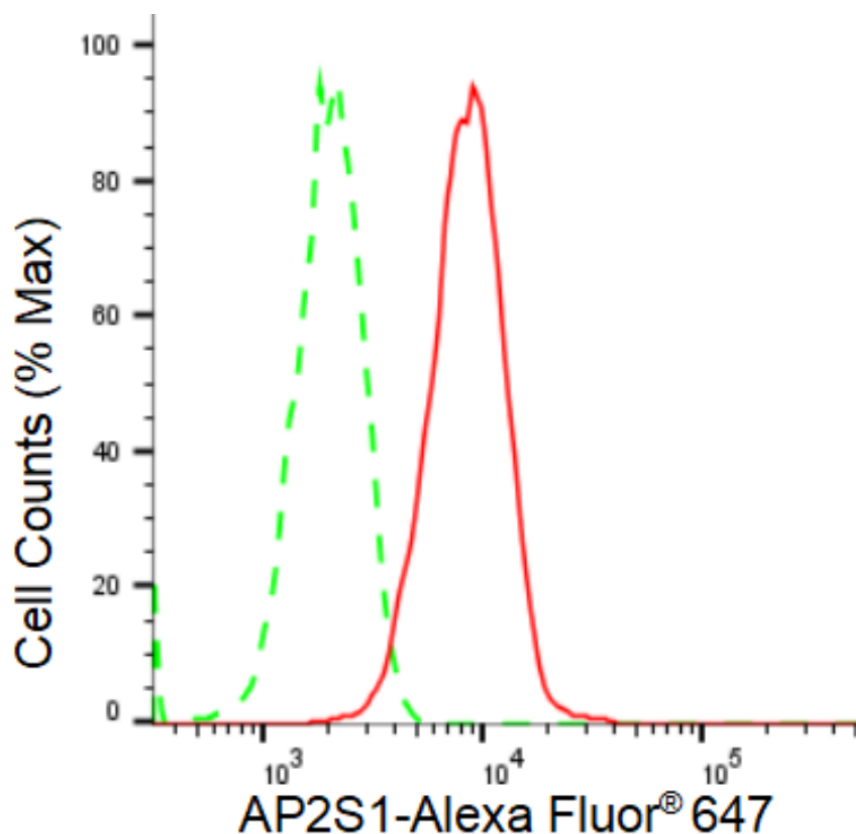
KD-Validated Anti-AP2S1 Recombinant Rabbit Monoclonal Antibody

PAGE 2

Immunocytochemistry (IC): 1:100-1:1,000

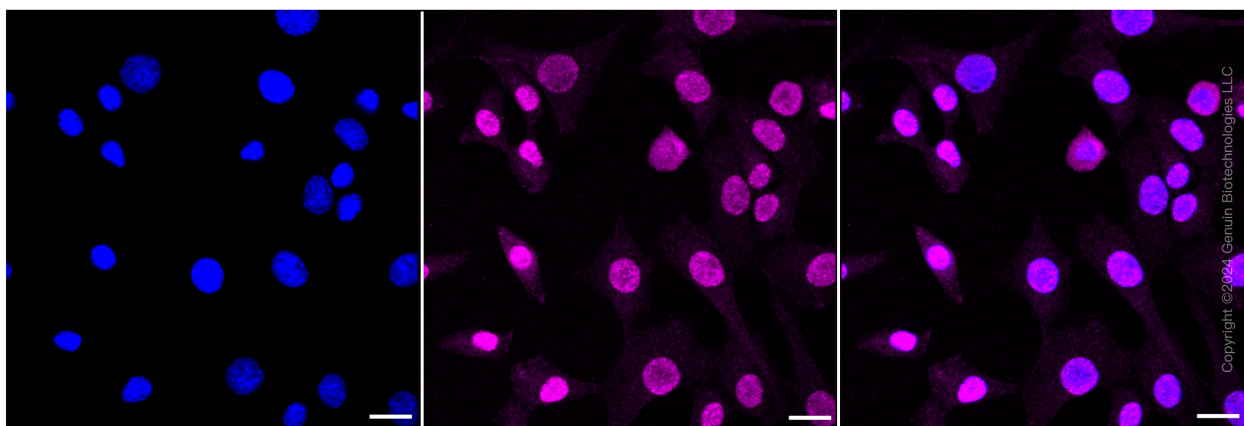
Note: This product is for research use only.

Validation Data



Copyright ©2024 Genuin Biotechnologies LLC

Flow cytometric analysis of AP2S1 expression in C2C12 cells using AP2S1 antibody (Cat#61452, 1:2000). Green, isotype control; red, AP2S1.



Copyright ©2024 Genuin Biotechnologies LLC

SUPPORT

SUPPORT@GENUINBIOTECH.COM
TEL: +1-540-855-7041

ORDERS

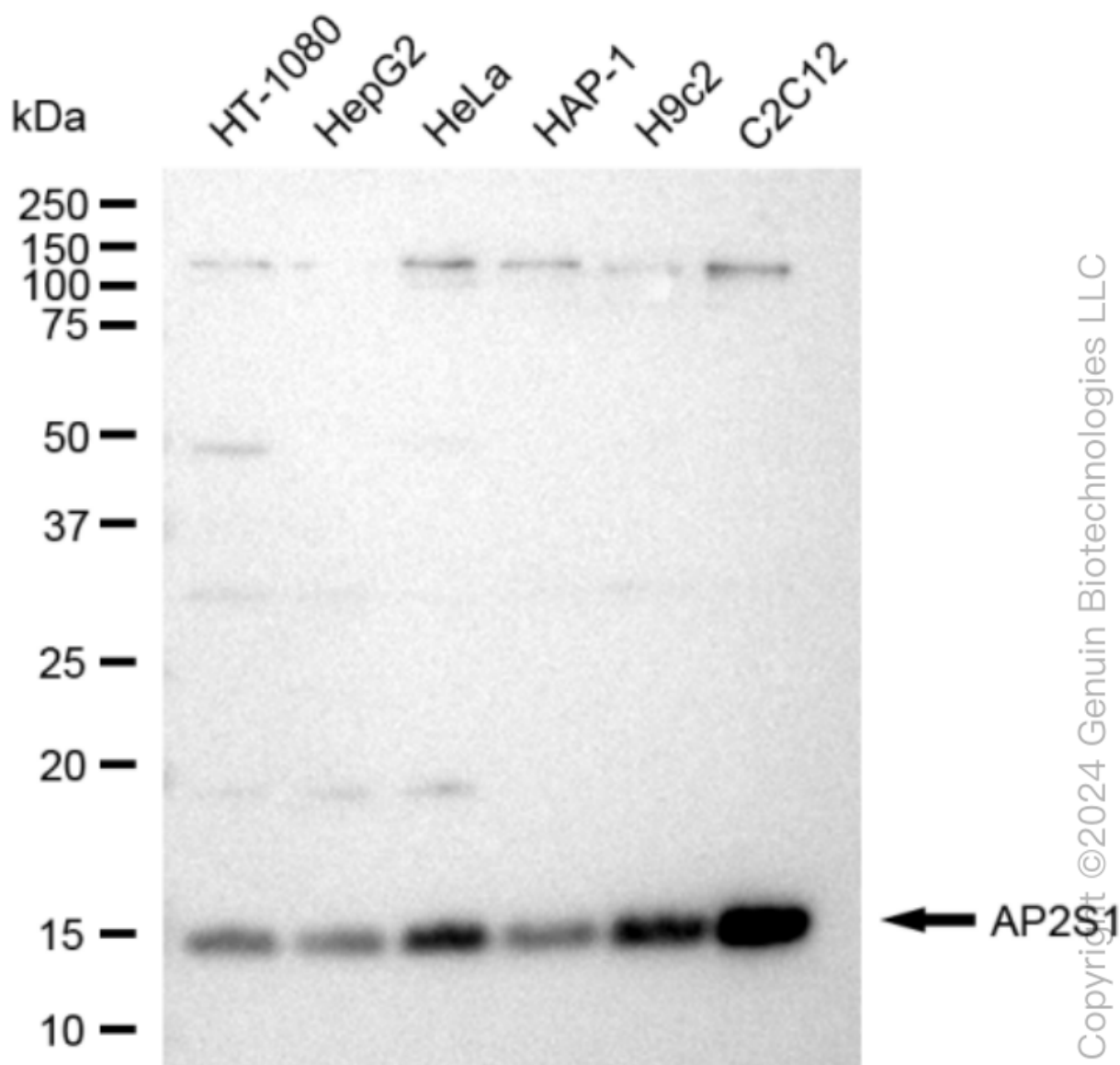
SALES@GENUINBIOTECH.COM
FAX: +1-540-855-7041

WWW.GENUINBIOTECH.COM

KD-Validated Anti-AP2S1 Recombinant Rabbit Monoclonal Antibody

PAGE 3

taken using Leica stellaris 5. Protein abundance based on laser Intensity and smart gain: Medium. Scale bar: 20 μ m.



Western blotting analysis using anti-AP2S1 antibody (Cat#61452). Total cell lysates (30 μ g) from various cell lines were loaded and separated by SDS-PAGE. The blot was incubated with anti-AP2S1 antibody (Cat#61452, 1:5,000) and HRP-conjugated goat anti-rabbit secondary antibody (Cat#201, 1:20,000) respectively. Image was developed using FeQ™ ECL Substrate Kit (Cat#226).

SUPPORT

SUPPORT@GENUINBIOTECH.COM
TEL: +1-540-855-7041

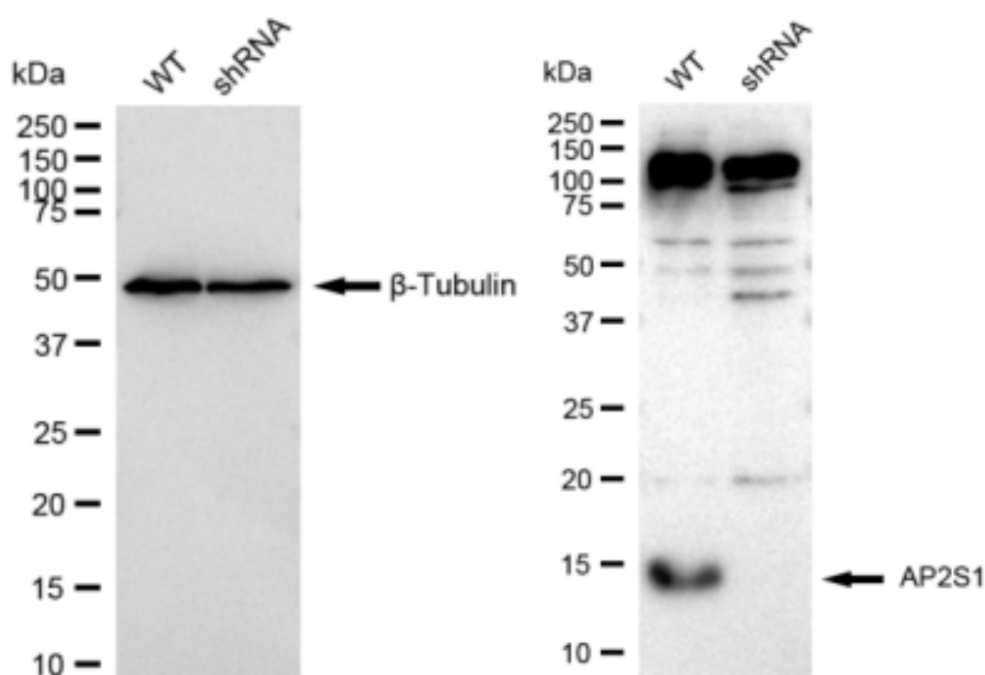
ORDERS

SALES@GENUINBIOTECH.COM
FAX: +1-540-855-7041

WWW.GENUINBIOTECH.COM

KD-Validated Anti-AP2S1 Recombinant Rabbit Monoclonal Antibody

PAGE 4



Copyright ©2024 Genuin Biotechnologies LLC

Western blotting analysis using anti-AP2S1 antibody (Cat#61452). AP2S1 expression in wild type (WT) and AP2S1 shRNA knockdown (KD) HeLa cells with 30 μ g of total cell lysates. β -Tubulin serves as a loading control. The blot was incubated with anti-AP2S1 antibody (Cat#61452, 1:5,000) and HRP-conjugated goat anti-rabbit secondary antibody (Cat#201, 1:20,000) respectively. Image was developed using FeQ™ ECL Substrate Kit (Cat#226).

SUPPORT

SUPPORT@GENUINBIOTECH.COM
TEL: +1-540-855-7041

ORDERS

SALES@GENUINBIOTECH.COM
FAX: +1-540-855-7041

WWW.GENUINBIOTECH.COM