

KD-Validated Anti-Calpain small subunit 1 Recombinant Rabbit Monoclonal Antibody



Catalog #: 61453

Aliases

CAPNS1; Calpain Small Subunit 1; CDPS; CANPS; CAPN4; CANP; Calcium-Activated Neutral Proteinase Small Subunit; Calcium-Dependent Protease Small Subunit 1; Calpain Regulatory Subunit; CANP Small Subunit; CSS1; 30K; Epididymis Secretory Sperm Binding Protein; Calcium-Dependent Protease, Small Subunit; Calcium-Dependent Protease Small Subunit; Calpain 4, Small Subunit (30K); Calpain, Small Polypeptide; CALPAIN4; CAPNS

Background

Gene Name: CAPNS1

NCBI Gene Entry: [826](#)

UniProt Entry: [P04632](#)

Application Information

Molecular Weight: Predicted, 28 kDa, observed, 28 kDa

Clonality: Rabbit monoclonal antibody

Clone ID: 23GB3720

Species Reactivity: Human

Applications Tested: Western blotting (WB), flow cytometry (FCM), immunocytochemistry (IC)

Immunogen

A synthesized peptide derived from human Calpain small subunit 1

Isotype

Rabbit IgG

Storage Buffer

Supplied in PBS (pH 7.4) containing 50% glycerol, and 0.02% sodium azide.

Storage

Store at -20 °C for one year.

Recommended Dilutions

Western Blotting (WB): 1:1,000-1:5,000

Flow Cytometry (FCM): 1:2,000

Immunocytochemistry (IC): 1:100-1:1,000

SUPPORT

SUPPORT@GENUINBIOTECH.COM
TEL: +1-540-855-7041

ORDERS

SALES@GENUINBIOTECH.COM
FAX: +1-540-855-7041

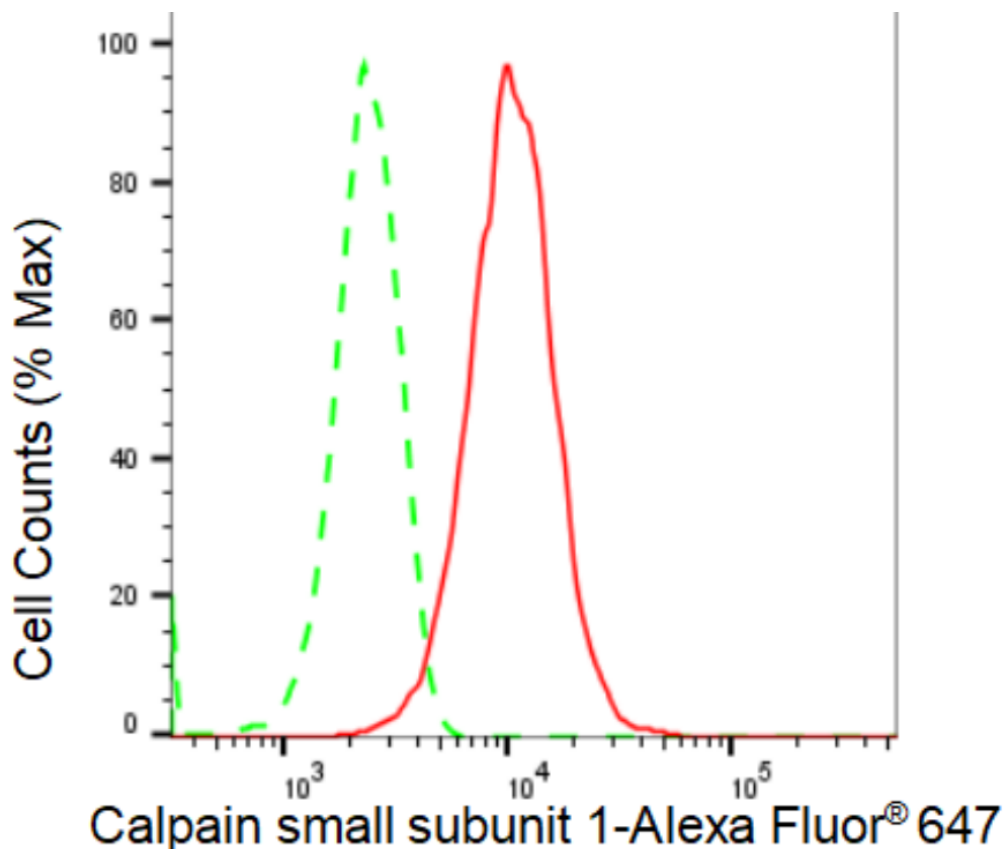
WWW.GENUINBIOTECH.COM

KD-Validated Anti-Calpain small subunit 1 Recombinant Rabbit Monoclonal Antibody

PAGE 2

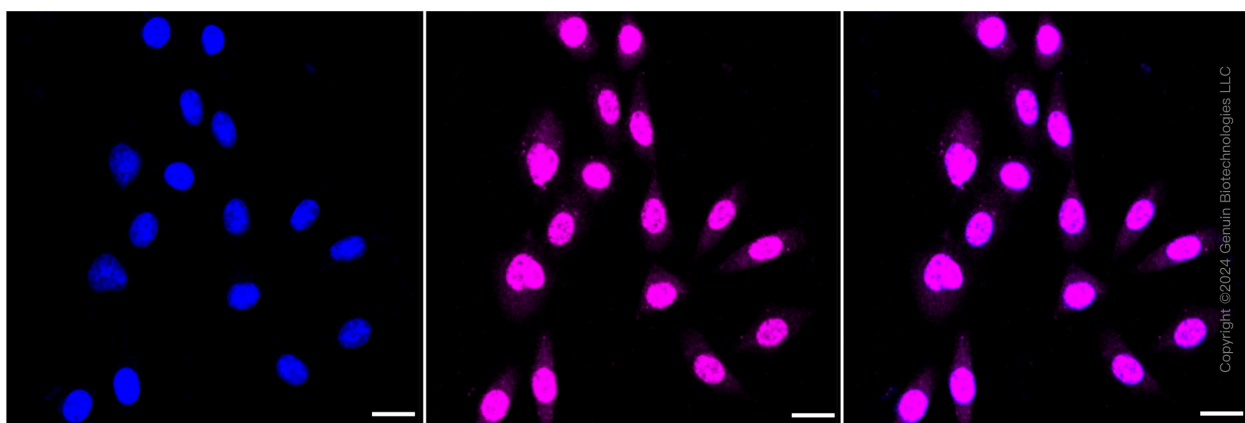
Note: This product is for research use only.

Validation Data



Copyright ©2024 Genuin Biotechnologies LLC

Flow cytometric analysis of Calpain small subunit 1 expression in HepG2 cells using Calpain small subunit 1 antibody (Cat#61453, 1:2,000). Green, isotype control; red, Calpain small subunit 1.



Copyright ©2024 Genuin Biotechnologies LLC

Immunocytochemical staining of HepG2 cells with Calpain small subunit 1 antibody (Cat#61453, 1:1,000). Nuclei were stained blue with DAPI; Calpain small subunit 1 was stained magenta with Alexa Fluor® 647. Images were taken using Leica stellaris 5. Protein abundance based on laser

SUPPORT

SUPPORT@GENUINBIOTECH.COM
TEL: +1-540-855-7041

ORDERS

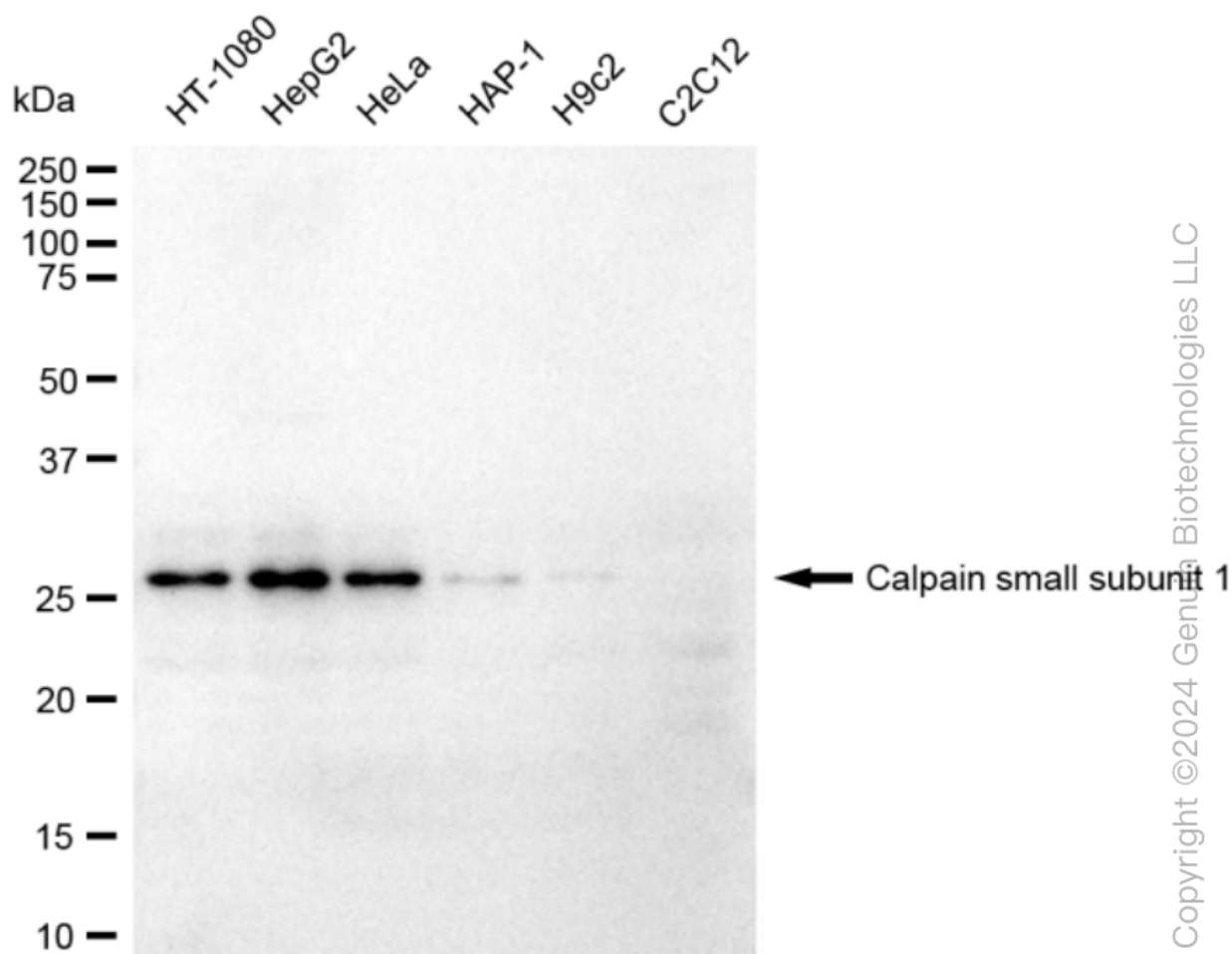
SALES@GENUINBIOTECH.COM
FAX: +1-540-855-7041

WWW.GENUINBIOTECH.COM

KD-Validated Anti-Calpain small subunit 1 Recombinant Rabbit Monoclonal Antibody

PAGE 3

Intensity and smart gain: Medium. Scale bar: 20 μ m.



Western blotting analysis using anti-Calpain small subunit 1 antibody (Cat#61453). Total cell lysates (30 μ g) from various cell lines were loaded and separated by SDS-PAGE. The blot was incubated with anti-Calpain small subunit 1 antibody (Cat#61453, 1:5,000) and HRP-conjugated goat anti-rabbit secondary antibody (Cat#201, 1:20,000) respectively. Image was developed using FeQ™ ECL Substrate Kit (Cat#226).

SUPPORT

SUPPORT@GENUINBIOTECH.COM
TEL: +1-540-855-7041

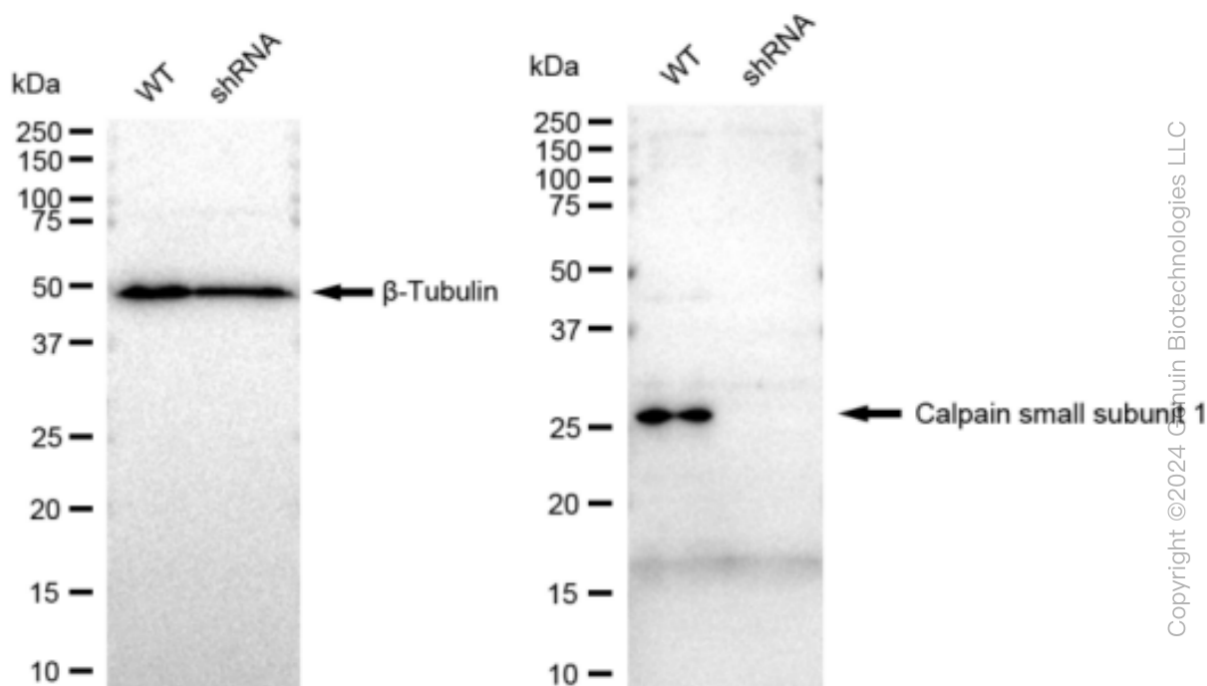
ORDERS

SALES@GENUINBIOTECH.COM
FAX: +1-540-855-7041

WWW.GENUINBIOTECH.COM

KD-Validated Anti-Calpain small subunit 1 Recombinant Rabbit Monoclonal Antibody

PAGE 4



Western blotting analysis using anti-Calpain small subunit 1 antibody (Cat#61453). Calpain small subunit 1 expression in wild type (WT) and Calpain small subunit 1 shRNA knockdown (KD) HeLa cells with 30 μ g of total cell lysates. β -Tubulin serves as a loading control. The blot was incubated with anti-Calpain small subunit 1 antibody (Cat#61453, 1:5,000) and HRP-conjugated goat anti-rabbit secondary antibody (Cat#201, 1:20,000) respectively. Image was developed using FeQ™ ECL Substrate Kit (Cat#226).

SUPPORT

SUPPORT@GENUINBIOTECH.COM
TEL: +1-540-855-7041

ORDERS

SALES@GENUINBIOTECH.COM
FAX: +1-540-855-7041

WWW.GENUINBIOTECH.COM