

KD-Validated Anti-Dihydrolipoamide dehydrogenase Recombinant Rabbit



Catalog #: 61456

Aliases

DLD; Dihydrolipoamide Dehydrogenase; OGDC-E3; DLDH; GCSL; LAD; E3; E3 Component Of Pyruvate Dehydrogenase Complex, 2-Oxo-Glutarate Complex, Branched Chain Keto Acid Dehydrogenase Complex; Dihydrolipoyl Dehydrogenase, Mitochondrial; Glycine Cleavage System L Protein; EC 1.8.1.4; PHE3; Dihydrolipoamide Dehydrogenase (E3 Component Of Pyruvate Dehydrogenase Complex, 2-Oxo-Glutarate Complex, Branched Chain Keto Acid Dehydrogenase Complex); Epididymis Secretory Sperm Binding Protein; Glycine Cleavage System Protein L; Lipoamide Dehydrogenase; Lipoyl Dehydrogenase; Lipoamide Reductase; Diaphorase; EC 1.8.1.48; DLDD

Background

Gene Name: DLD

NCBI Gene Entry: [1738](#)

UniProt Entry: [P09622](#)

Application Information

Molecular Weight: Predicted, 54 kDa, observed, 56 kDa

Clonality: Rabbit monoclonal antibody

Clone ID: 23GB3825

Species Reactivity: Human, mouse, rat

Applications Tested: Western blotting (WB), flow cytometry (FCM), immunocytochemistry (IC)

Immunogen

A synthesized peptide derived from human DLDH

Isotype

Rabbit IgG

Storage Buffer

Supplied in PBS (pH 7.4) containing 50% glycerol, and 0.02% sodium azide.

Storage

Store at -20 °C for one year.

Recommended Dilutions

Western Blotting (WB): 1:1,000-1:5,000

SUPPORT

SUPPORT@GENUINBIOTECH.COM
TEL: +1-540-855-7041

ORDERS

SALES@GENUINBIOTECH.COM
FAX: +1-540-855-7041

WWW.GENUINBIOTECH.COM

KD-Validated Anti-Dihydrolipoamide dehydrogenase Recombinant Rabbit

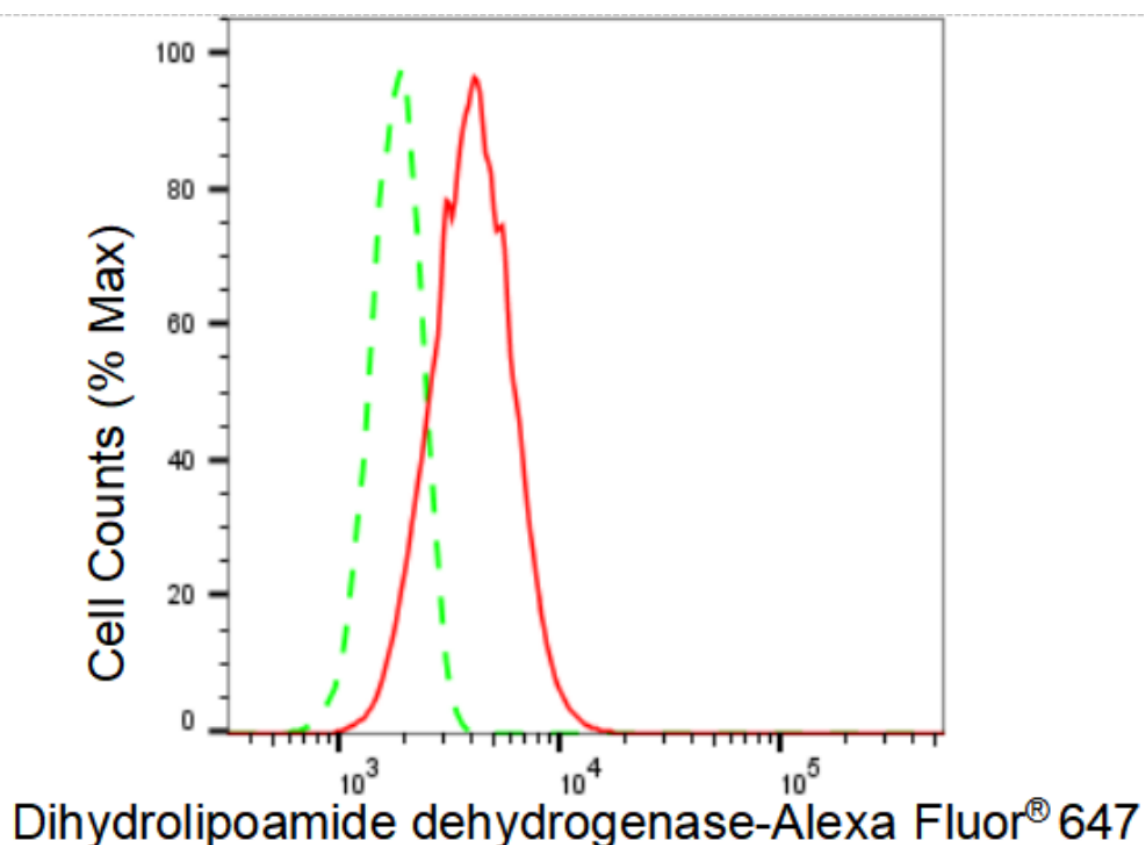
PAGE 2

Flow Cytometry (FCM): 1:2,000

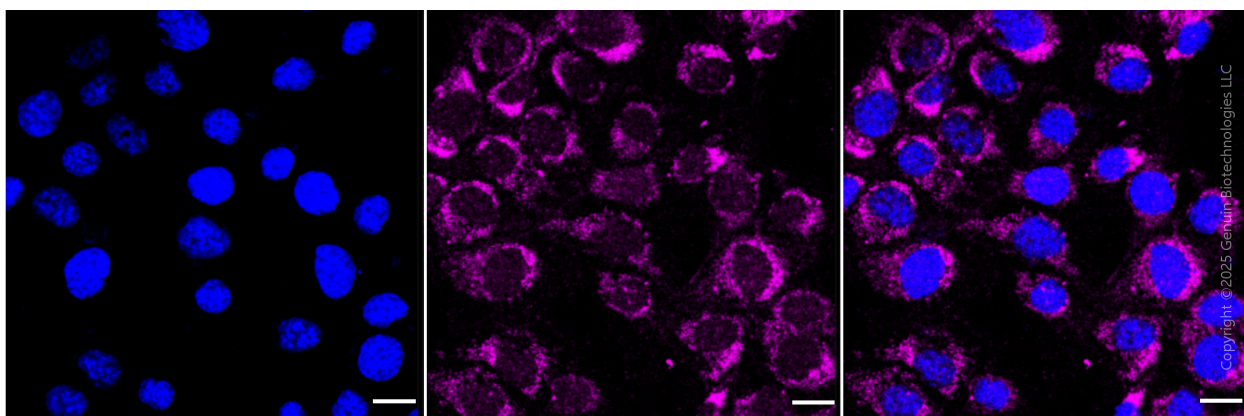
Immunocytochemistry (IC): 1:100-1:1,000

Note: This product is for research use only.

Validation Data



Flow cytometric analysis of Dihydrolipoamide dehydrogenase expression in HT-1080 cells using Dihydrolipoamide dehydrogenase antibody (Cat#61456, 1:2,000). Green, isotype control; red, Dihydrolipoamide dehydrogenase.



SUPPORT

SUPPORT@GENUINBIOTECH.COM
TEL: +1-540-855-7041

ORDERS

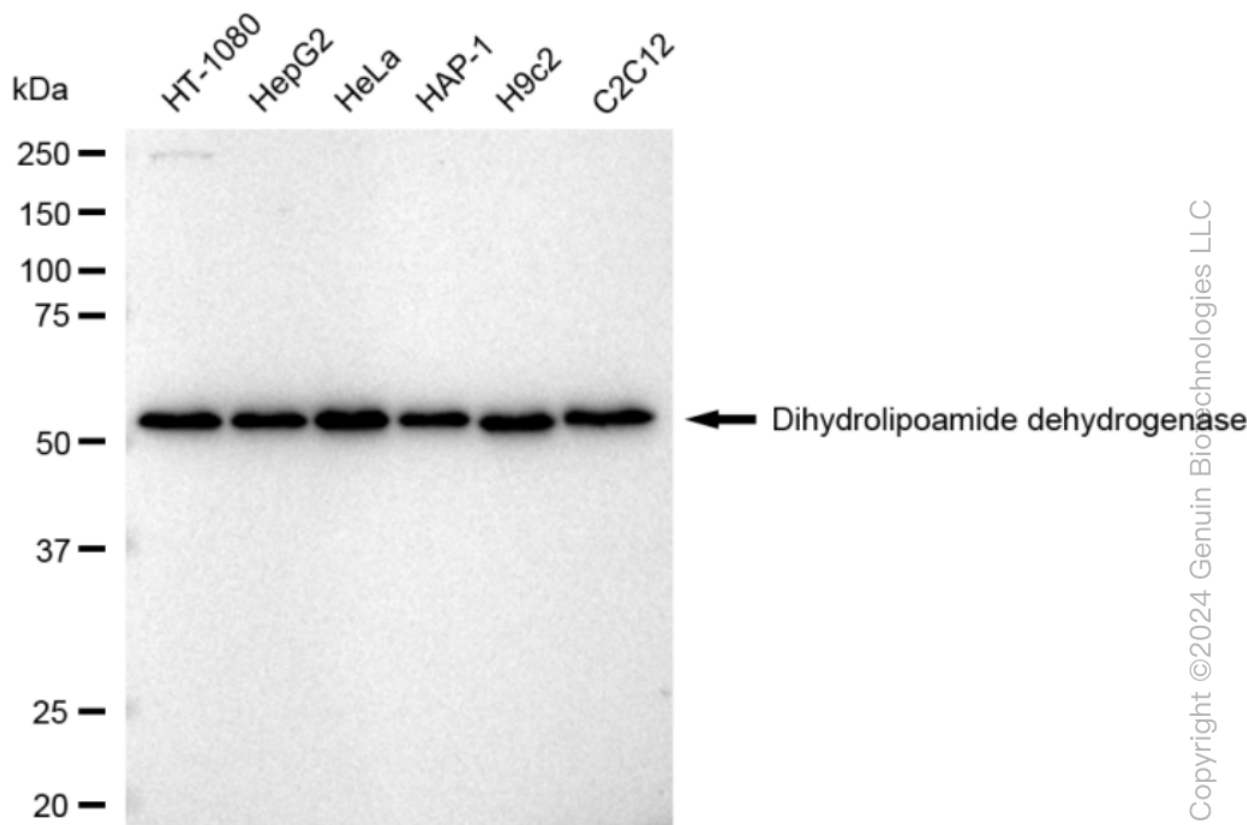
SALES@GENUINBIOTECH.COM
FAX: +1-540-855-7041

WWW.GENUINBIOTECH.COM

KD-Validated Anti-Dihydrolipoamide dehydrogenase Recombinant Rabbit

PAGE 3

Immunocytochemical staining of HT-1080 cells with anti-Dihydrolipoamide dehydrogenase antibody (Cat #61456, 1:1,000) . Nuclei were stained blue with DAPI; Dihydrolipoamide dehydrogenase was stained magenta with Alexa Fluor® 647. Images were taken using Leica stellaris 5. Protein abundance based on laser Intensity and smart gain: Medium. Scale bar, 20 μ m.



Western blotting analysis using anti-Dihydrolipoamide dehydrogenase antibody (Cat#61456). Total cell lysates (30 μ g) from various cell lines were loaded and separated by SDS-PAGE. The blot was incubated with anti-Dihydrolipoamide dehydrogenase antibody (Cat#61456, 1:5,000) and HRP-conjugated goat anti-rabbit secondary antibody (Cat#201, 1:20,000) respectively. Image was developed using FeQ™ ECL Substrate Kit (Cat#226).

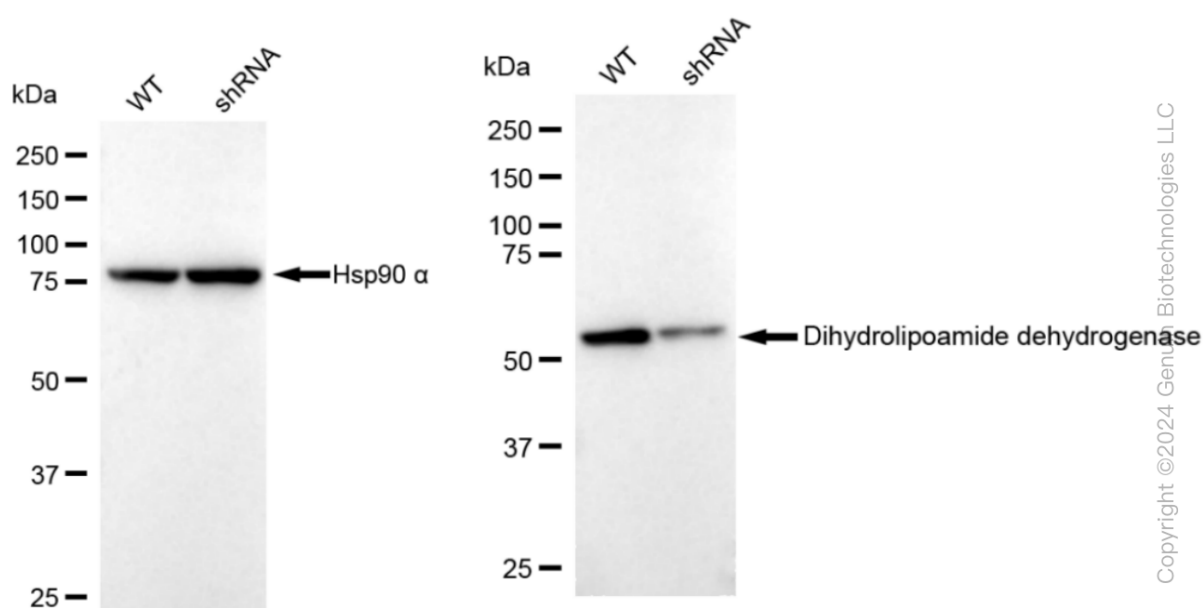
SUPPORT

SUPPORT@GENUINBIOTECH.COM
TEL: +1-540-855-7041

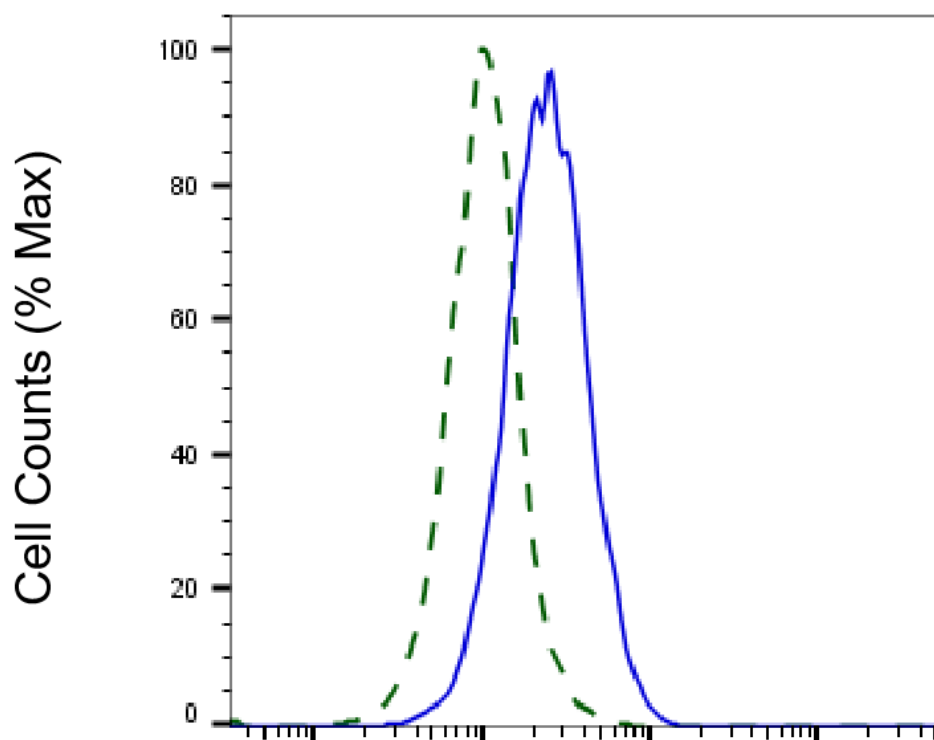
ORDERS

SALES@GENUINBIOTECH.COM
FAX: +1-540-855-7041

WWW.GENUINBIOTECH.COM



Western blotting analysis using anti-Dihydrolipoamide dehydrogenase antibody (Cat#61456). Dihydrolipoamide dehydrogenase expression in wild type (WT) and Dihydrolipoamide dehydrogenase shRNA knockdown (KD) HeLa cells with 30 μ g of total cell lysates. Hsp90 α serves as a loading control. The blot was incubated with anti-Dihydrolipoamide dehydrogenase antibody (Cat#61456, 1:5,000) and HRP-conjugated goat anti-rabbit secondary antibody (Cat#201, 1:20,000) respectively. Image was developed using FeQ™ ECL Substrate Kit (Cat#226).



Copyright ©2025 Genuin Biotechnologies LLC

Dihydrolipoamide dehydrogenase-Alexa Fluor® 647

Validation of Dihydrolipoamide dehydrogenase knockdown using flow cytometry. Wild-type(WT, Blue) and knockdown(KD, Green) HeLa cells were stained with anti-Dihydrolipoamide dehydrogenase antibody (Cat#61456, 1:2,000) and analyzed using CytoFLEX.