

# KD-Validated Anti-ADP ribosylation factor 5 Recombinant Rabbit Monoclonal Antibody



**Catalog #: 61457**

## Aliases

ARF5; ADP Ribosylation Factor 5; ADP-Ribosylation Factor 5

## Background

Gene Name: ARF5

NCBI Gene Entry: [381](#)

UniProt Entry: [P84085](#)

## Application Information

Molecular Weight: Predicted, 21 kDa, observed, 18 kDa

Clonality: Rabbit monoclonal antibody

Clone ID: 23GB3635

Species Reactivity: Human, mouse, rat

Applications Tested: Western blotting (WB), flow cytometry (FCM), immunocytochemistry (IC)

## Immunogen

A synthesized peptide derived from human ARF5

## Isotype

Rabbit IgG

## Storage Buffer

Supplied in PBS (pH 7.4) containing 50% glycerol, and 0.02% sodium azide.

## Storage

Store at -20 °C for one year.

## Recommended Dilutions

Western Blotting (WB): 1:1,000-1:5,000

Flow Cytometry (FCM): 1:2,000

Immunocytochemistry (IC): 1:100-1:1,000

**Note:** This product is for research use only.

## Validation Data

---

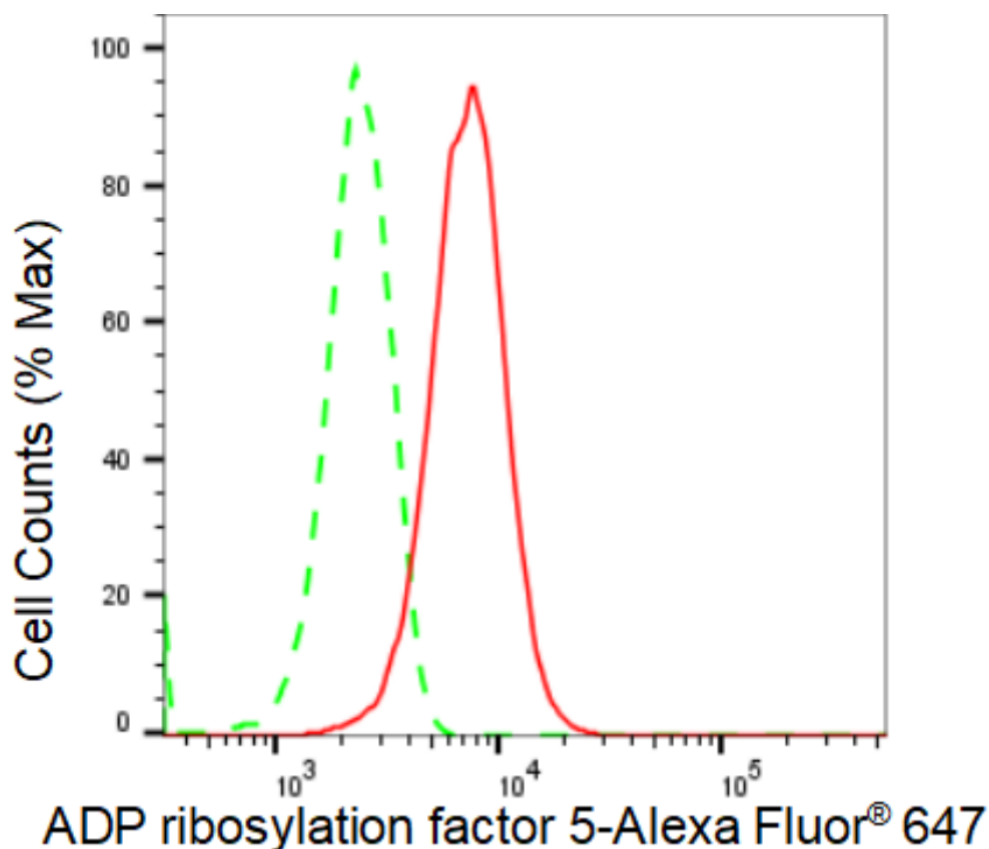
### SUPPORT

SUPPORT@GENUINBIOTECH.COM  
TEL: +1-540-855-7041

### ORDERS

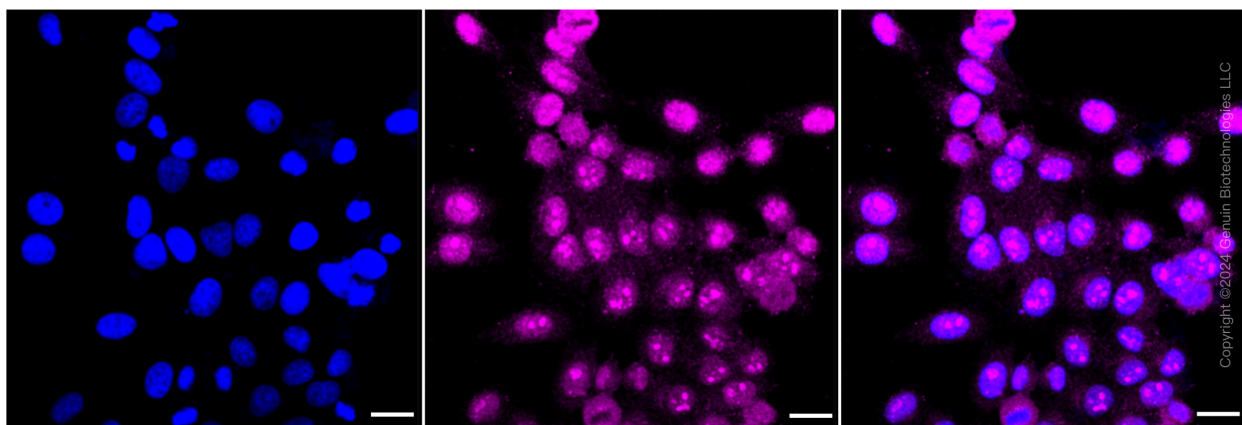
SALES@GENUINBIOTECH.COM  
FAX: +1-540-855-7041

[WWW.GENUINBIOTECH.COM](http://WWW.GENUINBIOTECH.COM)



Copyright ©2024 Genuin Biotechnologies LLC

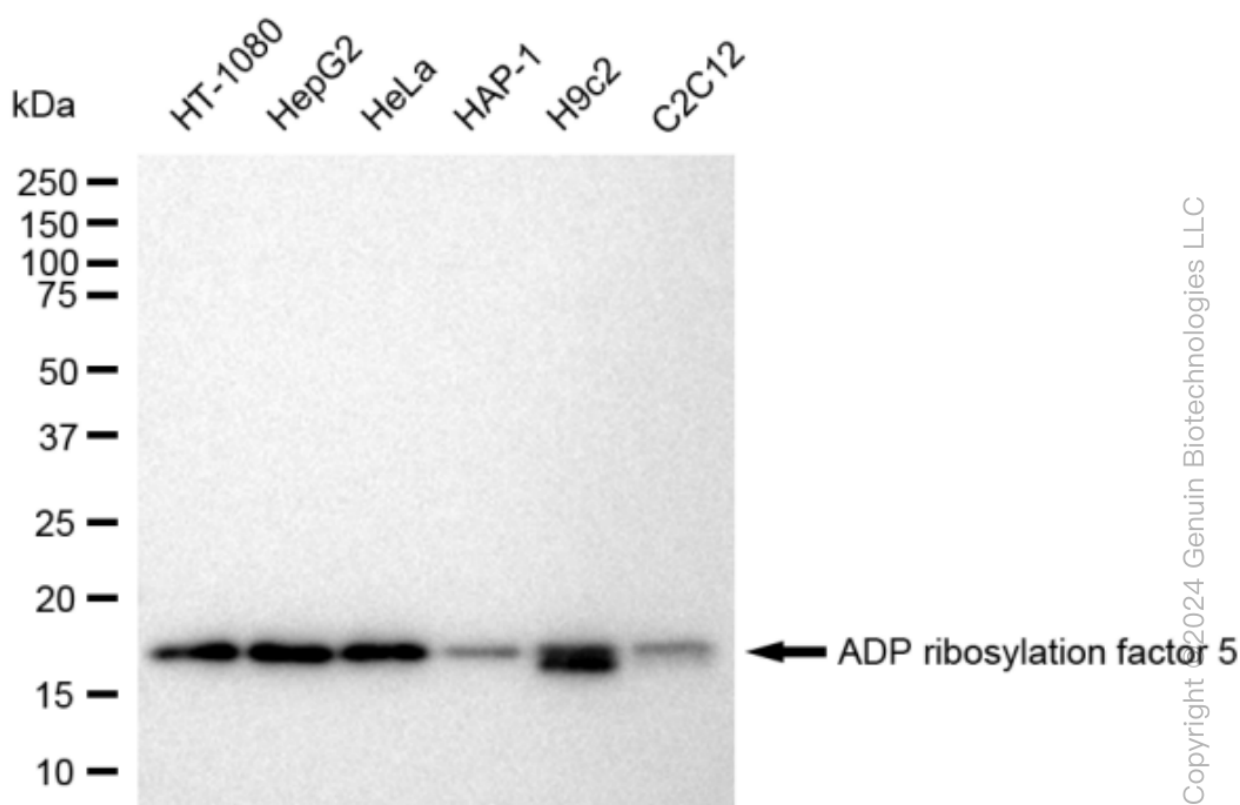
Flow cytometric analysis of ADP ribosylation factor 5 expression in HepG2 cells using ADP ribosylation factor 5 antibody (Cat#61457, 1:2,000). Green, isotype control; red, ADP ribosylation factor 5.



Immunocytochemical staining of HepG2 cells with ADP ribosylation factor 5 antibody (Cat#61457, 1:1,000). Nuclei were stained blue with DAPI; ADP ribosylation factor 5 was stained magenta with Alexa Fluor® 647. Images were taken using Leica stellaris 5. Protein abundance based on laser Intensity and smart gain: Medium. Scale bar: 20 µm.

## KD-Validated Anti-ADP ribosylation factor 5 Recombinant Rabbit Monoclonal Antibody

PAGE 3



Western blotting analysis using anti-ADP ribosylation factor 5 antibody (Cat#61457). Total cell lysates (30 µg) from various cell lines were loaded and separated by SDS-PAGE. The blot was incubated with anti-ADP ribosylation factor 5 antibody (Cat#61457, 1:5,000) and HRP-conjugated goat anti-rabbit secondary antibody (Cat#201, 1:20,000) respectively. Image was developed using FeQ™ ECL Substrate Kit (Cat#226).

### SUPPORT

SUPPORT@GENUINBIOTECH.COM  
TEL: +1-540-855-7041

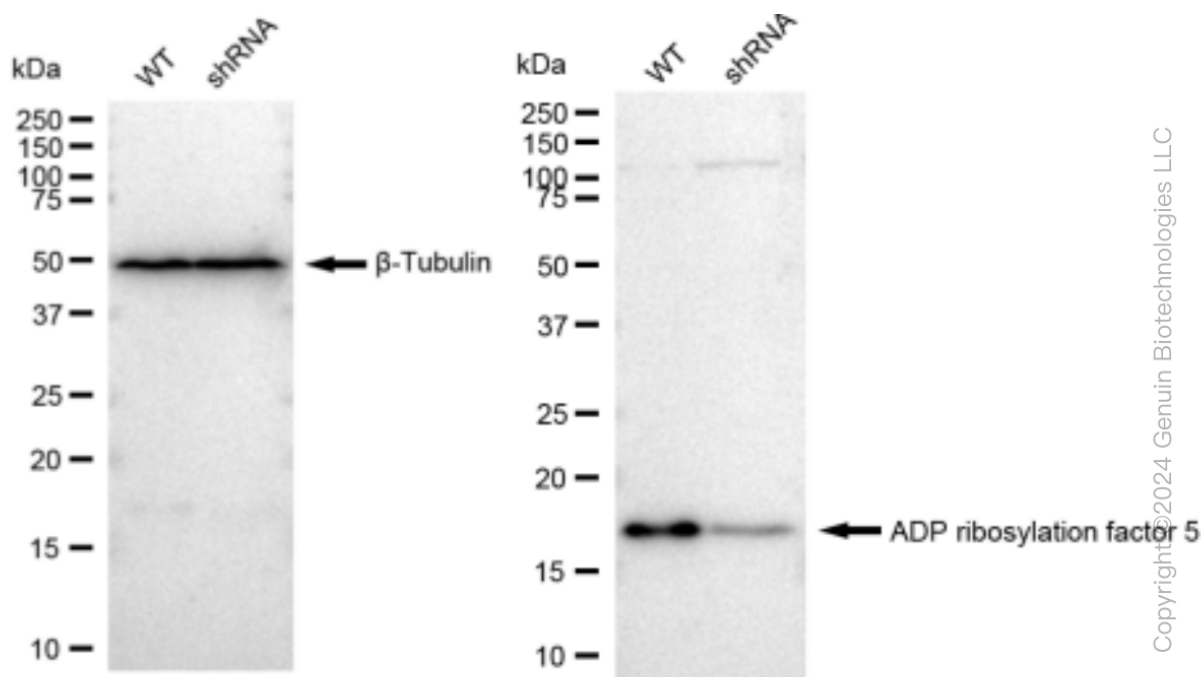
### ORDERS

SALES@GENUINBIOTECH.COM  
FAX: +1-540-855-7041

WWW.GENUINBIOTECH.COM

## KD-Validated Anti-ADP ribosylation factor 5 Recombinant Rabbit Monoclonal Antibody

PAGE 4



Western blotting analysis using anti-ADP ribosylation factor 5 antibody (Cat#61457). ADP ribosylation factor 5 expression in wild type (WT) and ADP ribosylation factor 5 shRNA knockdown (KD) HeLa cells with 30  $\mu$ g of total cell lysates.  $\beta$ -Tubulin serves as a loading control. The blot was incubated with anti-ADP ribosylation factor 5 antibody (Cat#61457, 1:5,000) and HRP-conjugated goat anti-rabbit secondary antibody (Cat#201, 1:20,000) respectively. Image was developed using FeQ™ ECL Substrate Kit (Cat#226).

### SUPPORT

SUPPORT@GENUINBIOTECH.COM  
TEL: +1-540-855-7041

### ORDERS

SALES@GENUINBIOTECH.COM  
FAX: +1-540-855-7041

[WWW.GENUINBIOTECH.COM](http://WWW.GENUINBIOTECH.COM)