

KD-Validated Anti-Smac/Diablo Recombinant Rabbit Monoclonal Antibody



Catalog #: 61458

Aliases

DIABLO; Diablo IAP-Binding Mitochondrial Protein; SMAC; Second Mitochondria-Derived Activator Of Caspase; DFNA64; Direct IAP-Binding Protein With Low PI; Diablo Homolog, Mitochondrial; DIABLO-S; FLJ25049; FLJ10537; Diablo, IAP-Binding Mitochondrial Protein; Diablo-Like Protein; Smac

Background

Gene Name: DIABLO

NCBI Gene Entry: [56616](#)

UniProt Entry: [Q9NR28](#)

Application Information

Molecular Weight: Predicted, 27 kDa; observed, 21 kDa

Clonality: Rabbit monoclonal antibody

Clone ID: 25GB2575

Species Reactivity: Human, mouse, rat

Applications Tested: Western blotting (WB), flow cytometry (FCM), immunocytochemistry (IC)

Immunogen

A synthesized peptide derived from human Smac/Diablo

Isotype

Rabbit IgG

Storage Buffer

Supplied in PBS (pH 7.4) containing 50% glycerol, and 0.02% sodium azide.

Storage

Store at -20 °C for one year.

Recommended Dilutions

Western blotting (WB): 1:1,000-1:5,000

Flow Cytometry (FCM): 1:2,000

Immunocytochemistry (IC): 1:100-1:1,000

SUPPORT

SUPPORT@GENUINBIOTECH.COM
TEL: +1-540-855-7041

ORDERS

SALES@GENUINBIOTECH.COM
FAX: +1-540-855-7041

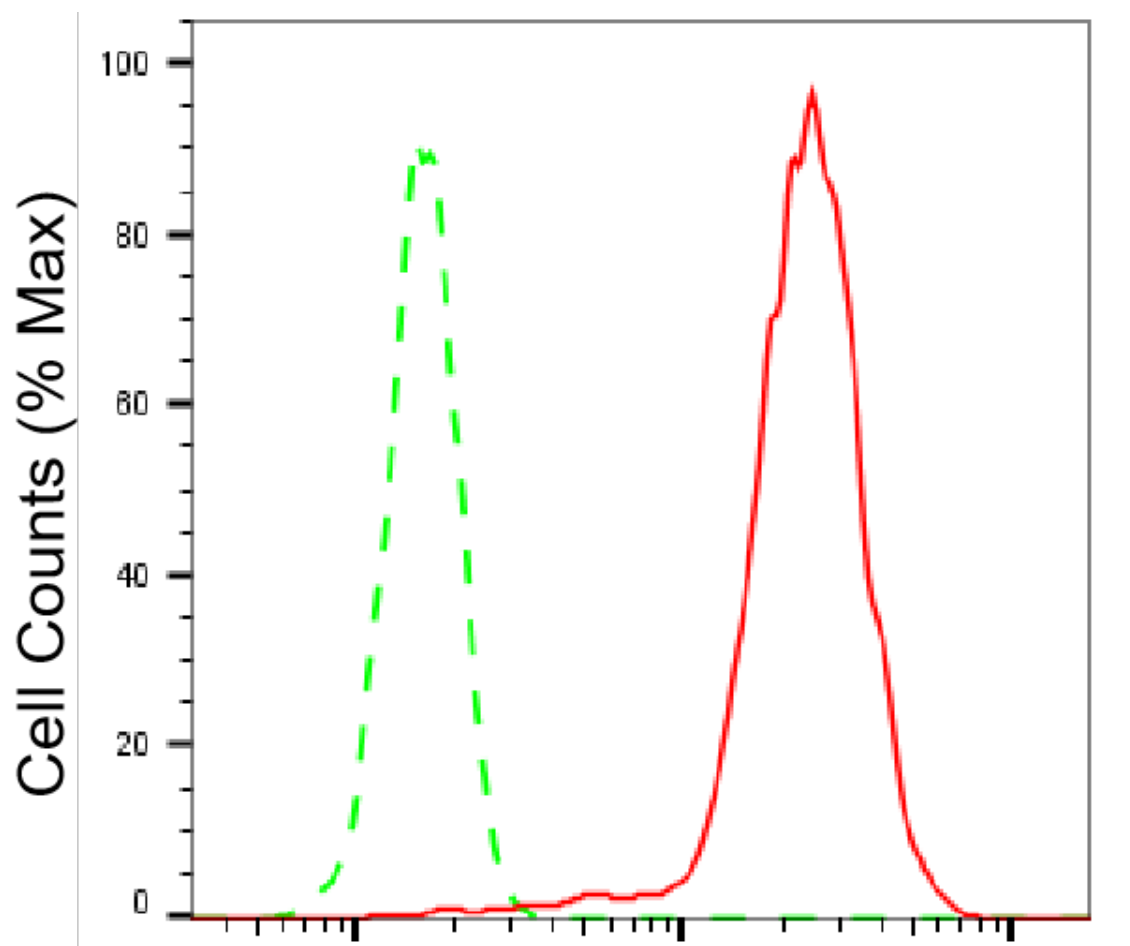
WWW.GENUINBIOTECH.COM

KD-Validated Anti-Smac/Diablo Recombinant Rabbit Monoclonal Antibody

PAGE 2

Note: This product is for research use only.

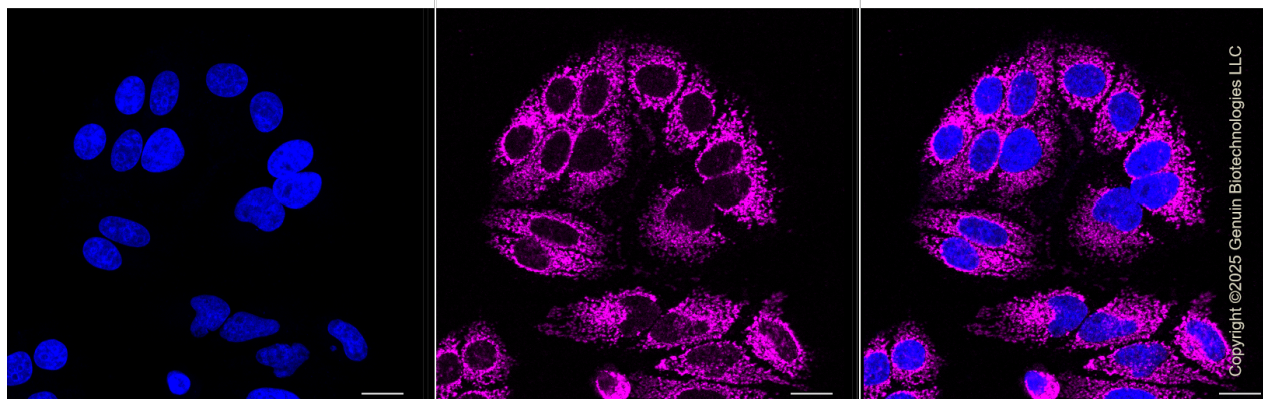
Validation Data



Copyright ©2025 Genuin Biotechnologies LLC

Smac/Diabl -Alexa Fluor® 647

Flow cytometric analysis of Smac/Diabl expression in HepG2 cells using Smac/Diabl antibody (Cat#61458, 1:2,000). Green, isotype control; red, Smac/Diabl.



Copyright ©2025 Genuin Biotechnologies LLC

SUPPORT

SUPPORT@GENUINBIOTECH.COM
TEL: +1-540-855-7041

ORDERS

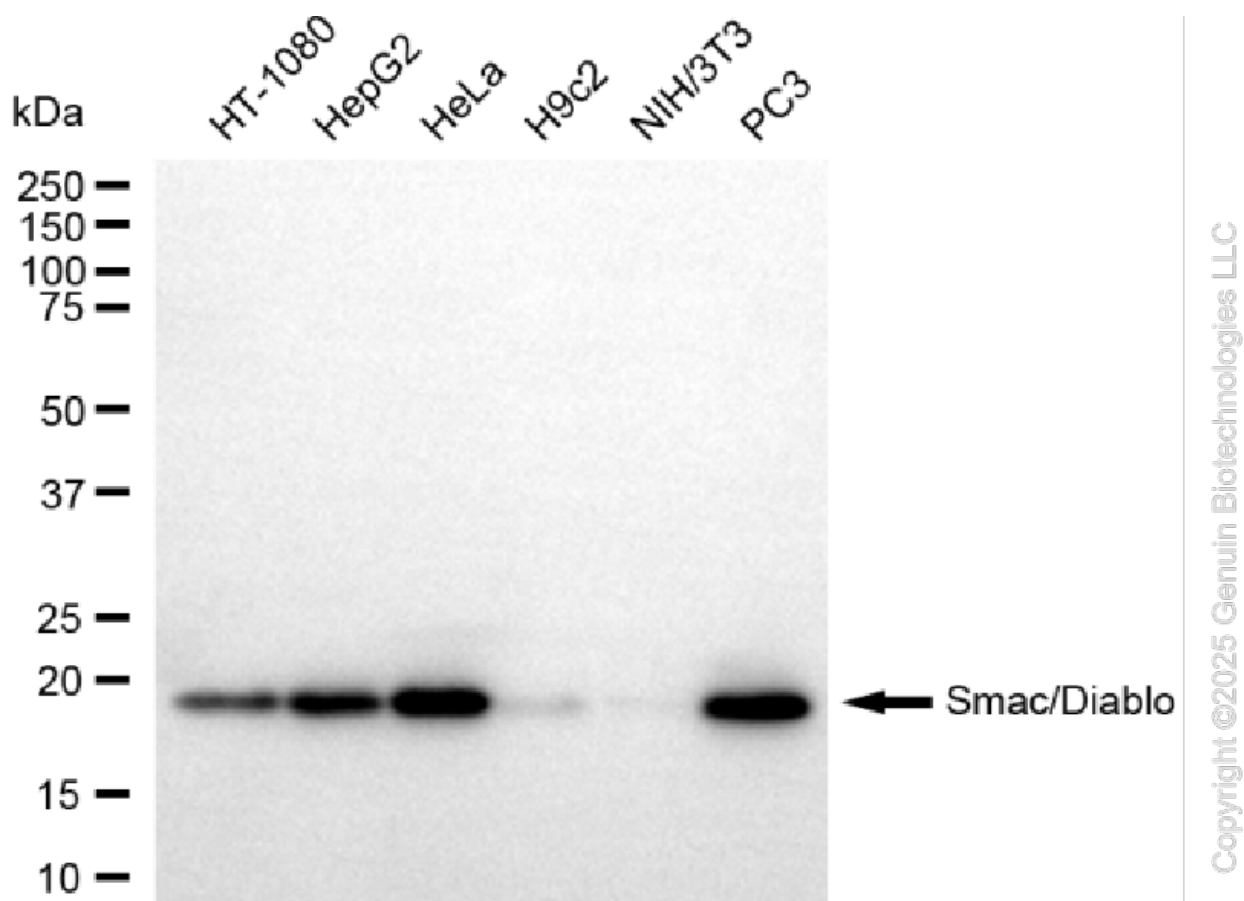
SALES@GENUINBIOTECH.COM
FAX: +1-540-855-7041

WWW.GENUINBIOTECH.COM

KD-Validated Anti-Smac/Diablo Recombinant Rabbit Monoclonal Antibody

PAGE 3

Immunocytochemical staining of HepG2 cells with anti-Smac/Diablo antibody (Cat#61458, 1:1,000). Nuclei were stained blue with DAPI; Smac/Diablo was stained magenta with Alexa Fluor® 647. Images were taken using Leica stellaris 5. Protein abundance based on laser Intensity and smart gain: Medium. Scale bar, 20 μ m.



Western blotting analysis using anti-Smac/Diablo antibody (Cat#61458). Total cell lysates (30 μ g) from various cell lines were loaded and separated by SDS-PAGE. The blot was incubated with anti-Smac/Diablo antibody (Cat#61458, 1:5,000) and HRP-conjugated goat anti-rabbit secondary antibody (Cat#201, 1:20,000) respectively. Image was developed using NaQ™ ECL Substrate Kit (Cat#716).

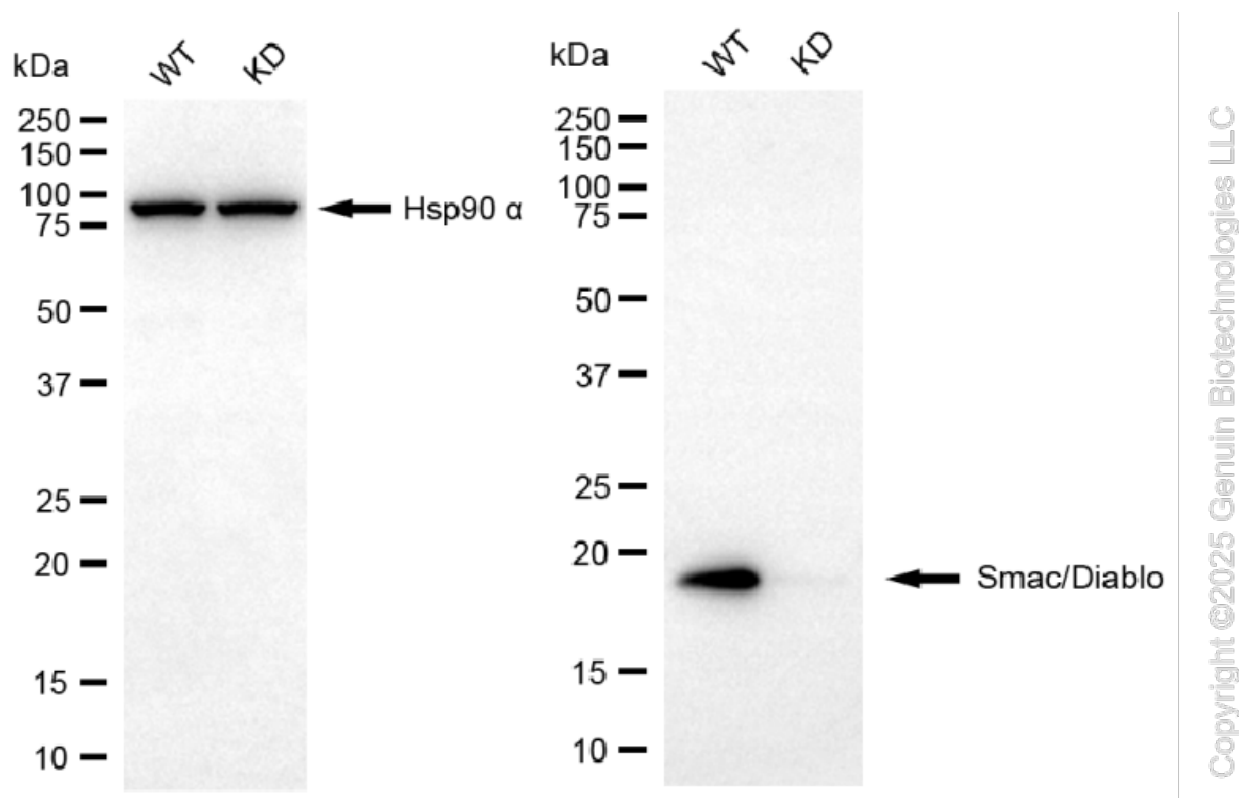
SUPPORT

SUPPORT@GENUINBIOTECH.COM
TEL: +1-540-855-7041

ORDERS

SALES@GENUINBIOTECH.COM
FAX: +1-540-855-7041

WWW.GENUINBIOTECH.COM



Western blotting analysis using anti-Smac/Diablo antibody (Cat#61458). Smac/Diablo expression in wild-type (WT) and DIABLO knockdown (KD) 293T cells with 20 µg of total cell lysates. Hsp90 α serves as a loading control. The blot was incubated with anti-Smac/Diablo antibody (Cat#61458, 1:10,000) and HRP-conjugated goat anti-rabbit secondary antibody (Cat#201, 1:20,000) respectively. Image was developed using NaQ™ ECL Substrate Kit (Cat#716).