

KD-Validated Anti-Mitofusin 2 Recombinant Rabbit Monoclonal Antibody



Catalog #: 61459

Aliases

MFN2; Mitofusin 2; CPRP1; KIAA0214; CMT2A2; MARF; Transmembrane GTPase MFN2; Mitofusin-2; Mitochondrial Assembly Regulatory Factor; Hyperplasia Suppressor; EC 3.6.5.-; EC 3.6.5; CMT2A2A; CMT2A2B; HMSN6A; CMT2A; HSG; MSL

Background

Gene Name: MFN2

NCBI Gene Entry: [9927](#)

UniProt Entry: [O95140](#)

Application Information

Molecular Weight: Predicted, 86 kDa; observed, 73 kDa

Clonality: Rabbit monoclonal antibody

Clone ID: 25GB2580

Species Reactivity: Human, mouse, rat

Applications Tested: Western blotting (WB), immunocytochemistry (IC)

Immunogen

A synthesized peptide derived from human Mitofusin 2

Isotype

Rabbit IgG

Storage Buffer

Supplied in PBS (pH 7.4) containing 50% glycerol, and 0.02% sodium azide.

Storage

Store at -20 °C for one year.

Recommended Dilutions

Western Blotting (WB): 1:1,000-1:5,000

Immunocytochemistry (IC): 1:100-1:1,000

Note: This product is for research use only.

Validation Data

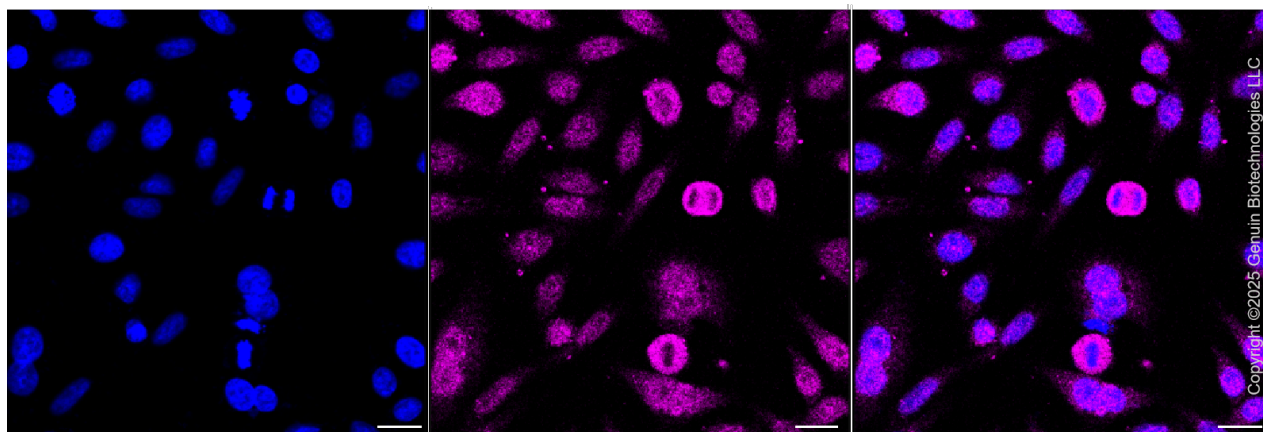
SUPPORT

SUPPORT@GENUINBIOTECH.COM
TEL: +1-540-855-7041

ORDERS

SALES@GENUINBIOTECH.COM
FAX: +1-540-855-7041

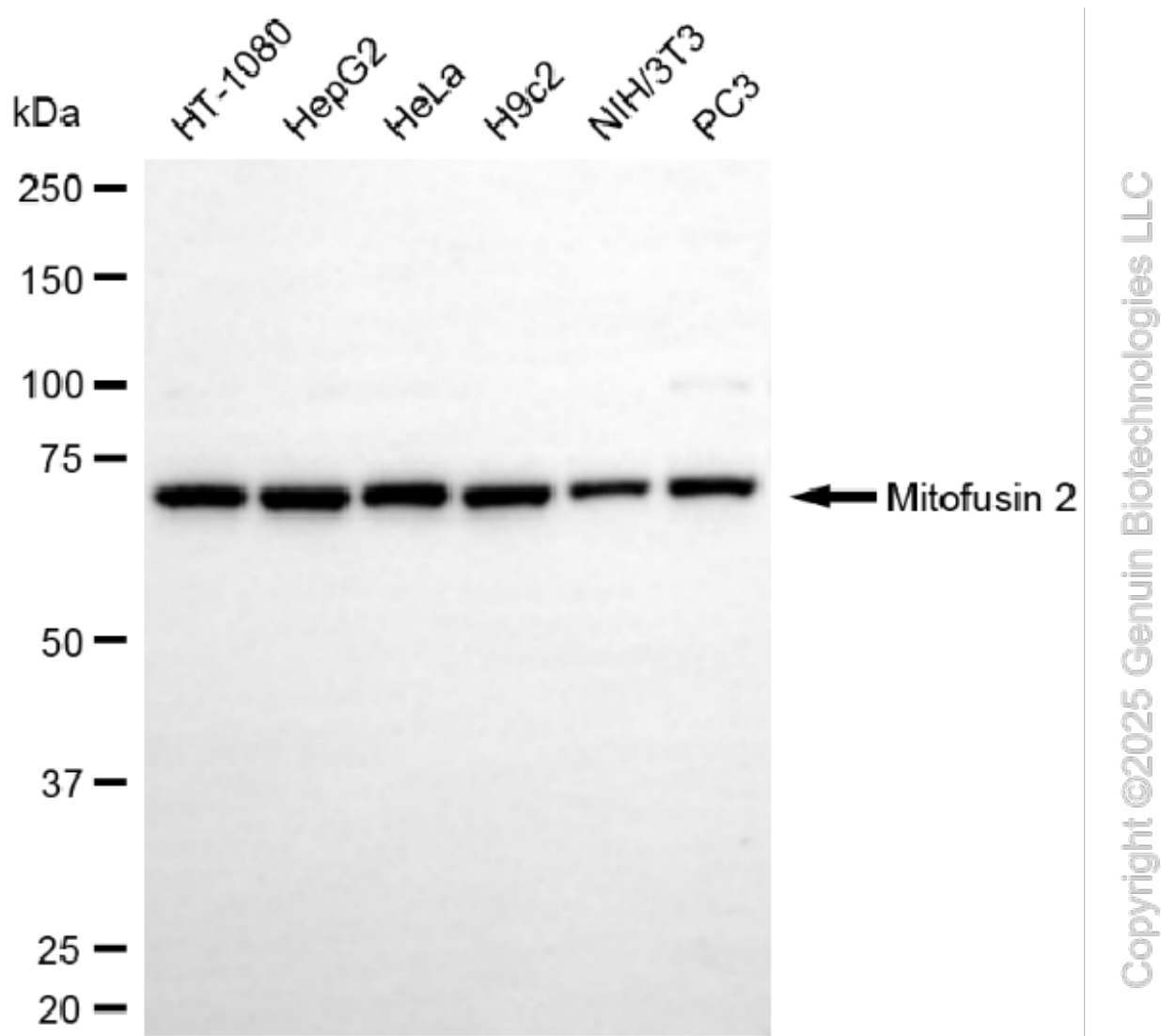
WWW.GENUINBIOTECH.COM



Immunocytochemical staining of HepG2 cells with anti-Mitofusin 2 antibody (Cat#61459, 1:1,000). Nuclei were stained blue with DAPI; Mitofusin 2 was stained magenta with Alexa Fluor® 647. Images were taken using Leica stellaris 5. Protein abundance based on laser Intensity and smart gain: Medium. Scale bar, 20 μ m.

KD-Validated Anti-Mitofusin 2 Recombinant Rabbit Monoclonal Antibody

PAGE 3



Western blotting analysis using anti-mitofusin 2 antibody (Cat#61459). Total cell lysates (30 µg) from various cell lines were loaded and separated by SDS-PAGE. The blot was incubated with anti-mitofusin 2 antibody (Cat#61459, 1:5,000) and HRP-conjugated goat anti-rabbit secondary antibody (Cat#201, 1:20,000) respectively. Image was developed using NaQ™ ECL Substrate Kit (Cat#716).

SUPPORT

SUPPORT@GENUINBIOTECH.COM
TEL: +1-540-855-7041

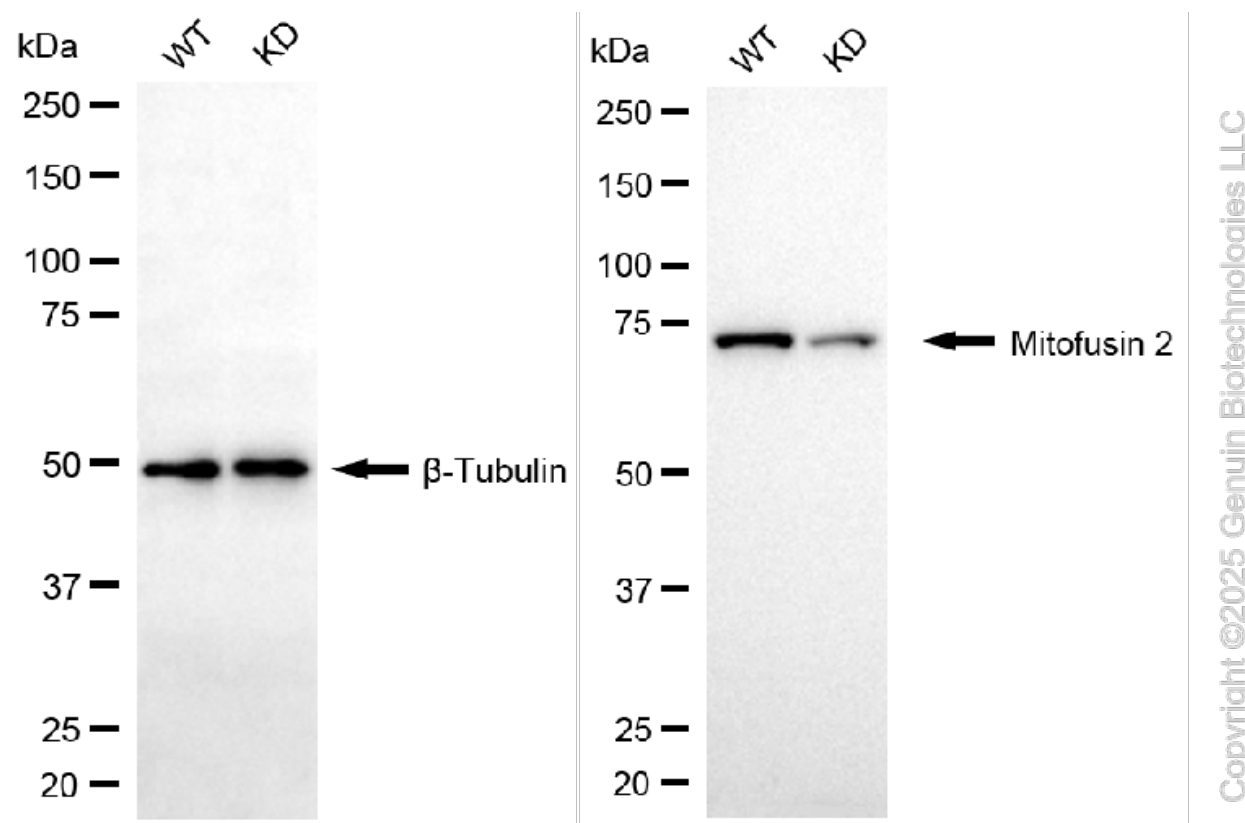
ORDERS

SALES@GENUINBIOTECH.COM
FAX: +1-540-855-7041

WWW.GENUINBIOTECH.COM

KD-Validated Anti-Mitofusin 2 Recombinant Rabbit Monoclonal Antibody

PAGE 4



Western blotting analysis using anti-mitofusin 2 antibody (Cat#61459). Mitofusin 2 expression in wild-type (WT) and mitofusin 2 (MFN2) knockdown (KD) HSHC cells with 20 µg of total cell lysates. β-Tubulin serves as a loading control. The blot was incubated with anti-mitofusin 2 antibody (Cat#61459, 1:5,000) and HRP-conjugated goat anti-rabbit secondary antibody (Cat#201, 1:20,000) respectively. Image was developed using NaQ™ ECL Substrate Kit (Cat#716).

SUPPORT

SUPPORT@GENUINBIOTECH.COM
TEL: +1-540-855-7041

ORDERS

SALES@GENUINBIOTECH.COM
FAX: +1-540-855-7041

WWW.GENUINBIOTECH.COM