

KD-Validated Anti-Calnexin Recombinant Rabbit Monoclonal Antibody



Catalog #: 61461

Aliases

CANX; Calnexin; IP90; P90; Major Histocompatibility Complex Class I Antigen-Binding Protein P88; CNX; Epididymis Secretory Sperm Binding Protein

Background

Gene Name: CANX

NCBI Gene Entry: [821](#)

UniProt Entry: [P27824](#)

Application Information

Molecular Weight: Predicted, 68 kDa, observed, 90 kDa

Clonality: Rabbit monoclonal antibody

Clone ID: 23GB2760

Species Reactivity: Human

Applications Tested: Western blotting (WB), flow cytometry (FCM), immunocytochemistry (IC)

Immunogen

A synthesized peptide derived from human Calnexin

Isotype

Rabbit IgG

Storage Buffer

Supplied in PBS (pH 7.4) containing 50% glycerol, and 0.02% sodium azide.

Storage

Store at -20 °C for one year.

Recommended Dilutions

Western Blotting (WB): 1:1,000-1:5,000

Flow Cytometry (FCM): 1:2,000

Immunocytochemistry (IC): 1:100-1:1,000

Note: This product is for research use only.

Validation Data

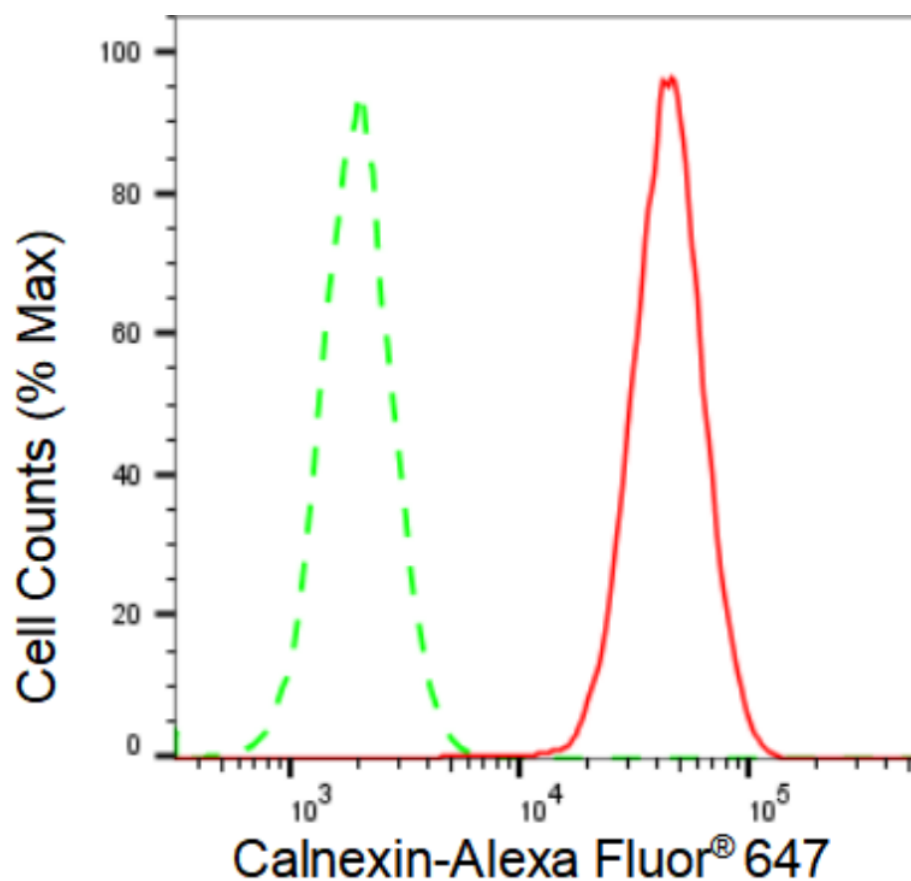
SUPPORT

SUPPORT@GENUINBIOTECH.COM
TEL: +1-540-855-7041

ORDERS

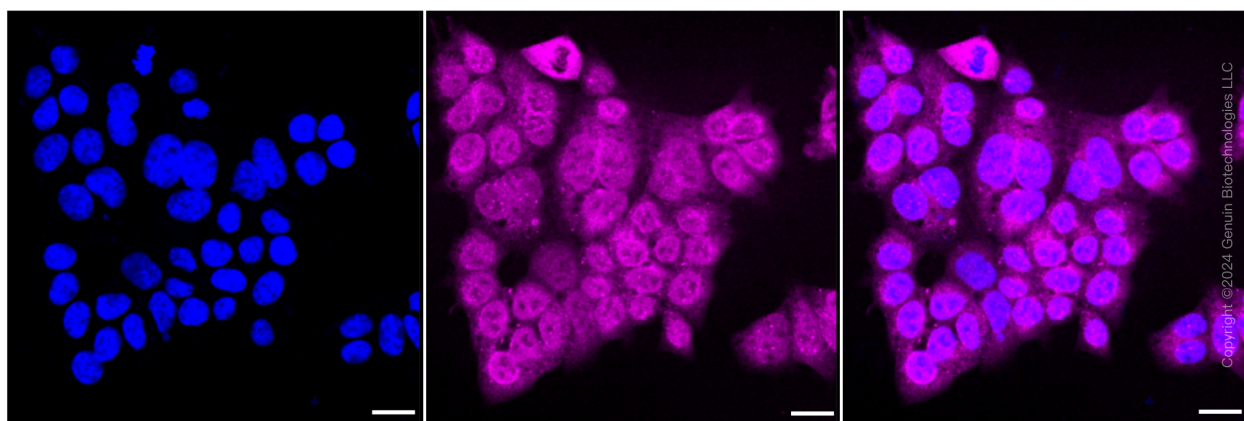
SALES@GENUINBIOTECH.COM
FAX: +1-540-855-7041

WWW.GENUINBIOTECH.COM



Copyright ©2024 Genuin Biotechnologies LLC

Flow cytometric analysis of Calnexin expression in HAP-1 cells using Calnexin antibody (Cat#61461, 1:2,000). Green, isotype control; red, Calnexin.



Immunocytochemical staining of HAP-1 cells with Calnexin antibody (Cat#61461, 1:1,000). Nuclei were stained blue with DAPI; Calnexin was stained magenta with Alexa Fluor® 647. Images were taken using Leica stellaris 5. Protein abundance based on laser Intensity and smart gain: High. Scale bar: 20 μ m.

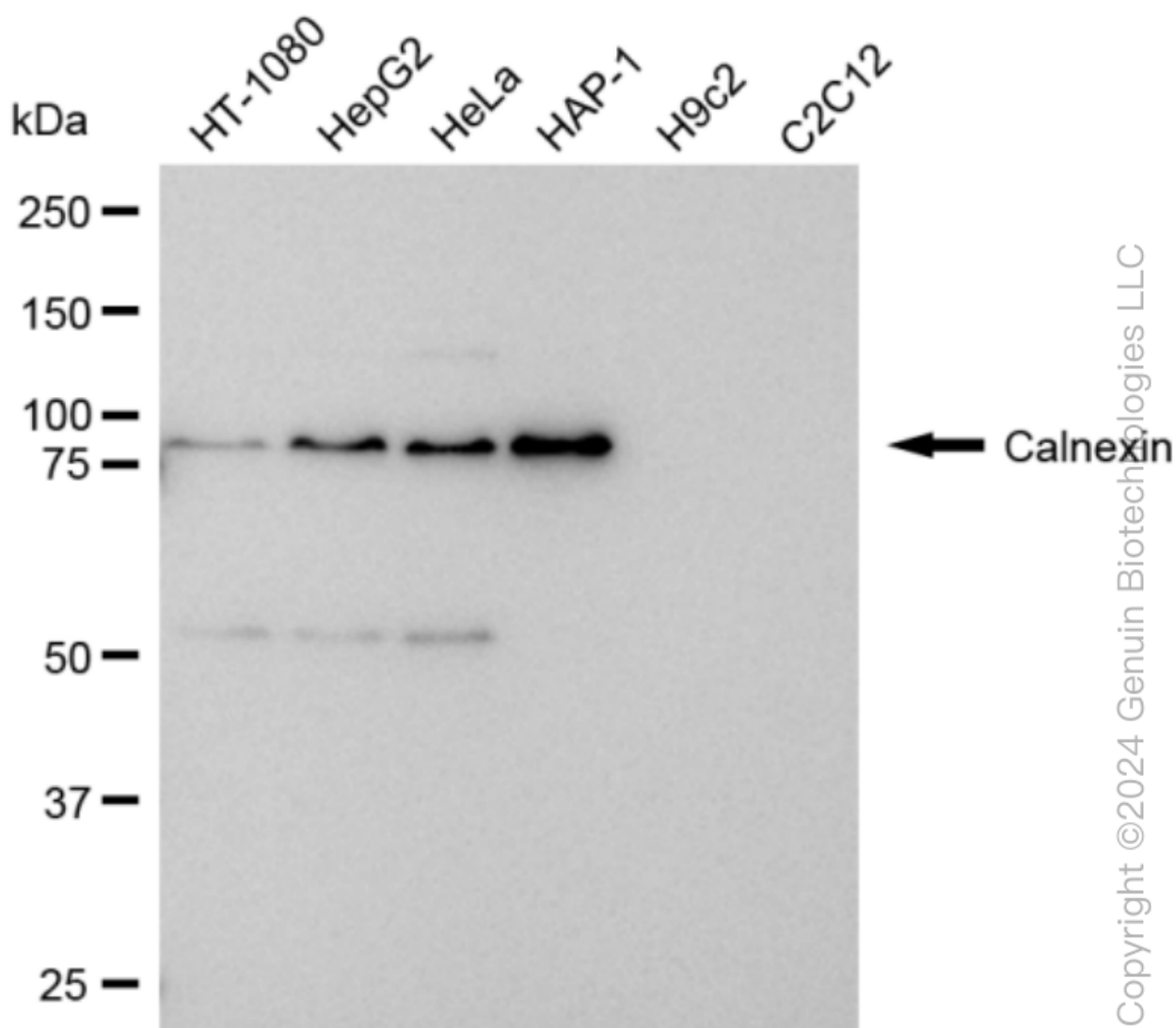
SUPPORT

SUPPORT@GENUINBIOTECH.COM
TEL: +1-540-855-7041

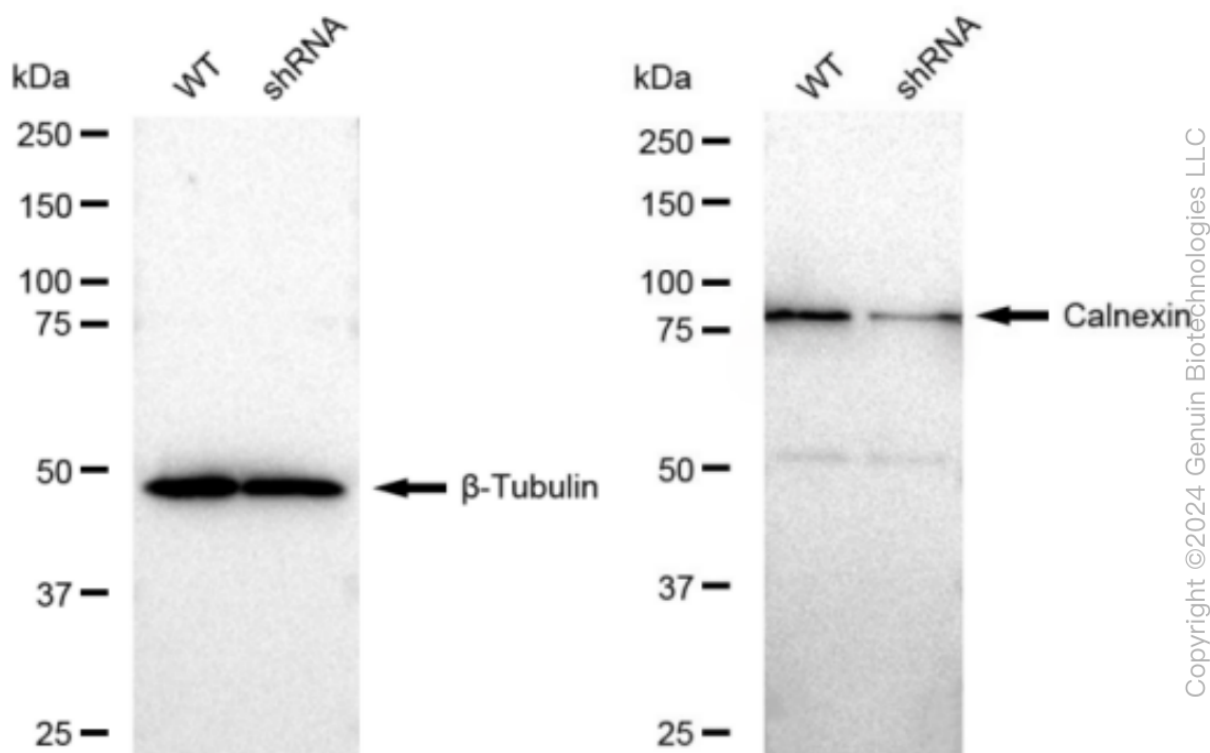
ORDERS

SALES@GENUINBIOTECH.COM
FAX: +1-540-855-7041

WWW.GENUINBIOTECH.COM



Western blotting analysis using anti-Calnexin antibody (Cat#61461). Total cell lysates (30 μ g) from various cell lines were loaded and separated by SDS-PAGE. The blot was incubated with anti-Calnexin antibody (Cat#61461, 1:5,000) and HRP-conjugated goat anti-rabbit secondary antibody (Cat#201, 1:20,000) respectively. Image was developed using FeQ™ ECL Substrate Kit (Cat#226).



Western blotting analysis using anti-Calnexin antibody (Cat#61461). Calnexin expression in wild type (WT) and calnexin shRNA knockdown (KD) HeLa cells with 30 μ g of total cell lysates. β -Tubulin serves as a loading control. The blot was incubated with anti-Calnexin antibody (Cat#61461, 1:5,000) and HRP-conjugated goat anti-rabbit secondary antibody (Cat#201, 1:20,000) respectively. Image was developed using FeQ™ ECL Substrate Kit (Cat#226).