

Catalog #: 61467

Aliases

HLTF; Helicase Like Transcription Factor; HIP116A; RNF80; SMARCA3; SNF2L3; HLTF1; SWI/SNF Related, Matrix Associated, Actin Dependent Regulator Of Chromatin, Subfamily A, Member 3; SWI/SNF-Related Matrix-Associated Actin-Dependent Regulator Of Chromatin Subfamily A Member 3; RING-Type E3 Ubiquitin Transferase HLTF; Sucrose Nonfermenting Protein 2-Like 3; Helicase-Like Transcription Factor; RING Finger Protein 80; HIP116; ZBU1; DNA-Binding Protein/Plasminogen Activator Inhibitor-1 Regulator; DNA-Binding Protein/Plasminogen Activator Inhibitor 1 Regulator; Sucrose Nonfermenting-Like 3; SNF2-Like 3; EC 2.3.2.27; EC 3.6.4.-; EC 3.6.1

Background

Gene Name: HLTF

NCBI Gene Entry: [6596](#)

UniProt Entry: [Q14527](#)

Application Information

Molecular Weight: Predicted, 114 kDa, observed, 120 kDa

Clonality: Rabbit monoclonal antibody

Clone ID: 23GB2485

Species Reactivity: Human

Applications Tested: Western blotting (WB), flow cytometry (FCM), immunocytochemistry (IC)

Immunogen

A synthesized peptide derived from human HLTF

Isotype

Rabbit IgG

Storage Buffer

Supplied in PBS (pH 7.4) containing 50% glycerol, and 0.02% sodium azide.

Storage

Store at -20 °C for one year.

Recommended Dilutions

Western Blotting (WB): 1:1,000-1:5,000

SUPPORT

SUPPORT@GENUINBIOTECH.COM
TEL: +1-540-855-7041

ORDERS

SALES@GENUINBIOTECH.COM
FAX: +1-540-855-7041

WWW.GENUINBIOTECH.COM

KD-Validated Anti-Helicase like transcription factor Recombinant Rabbit Monoclonal

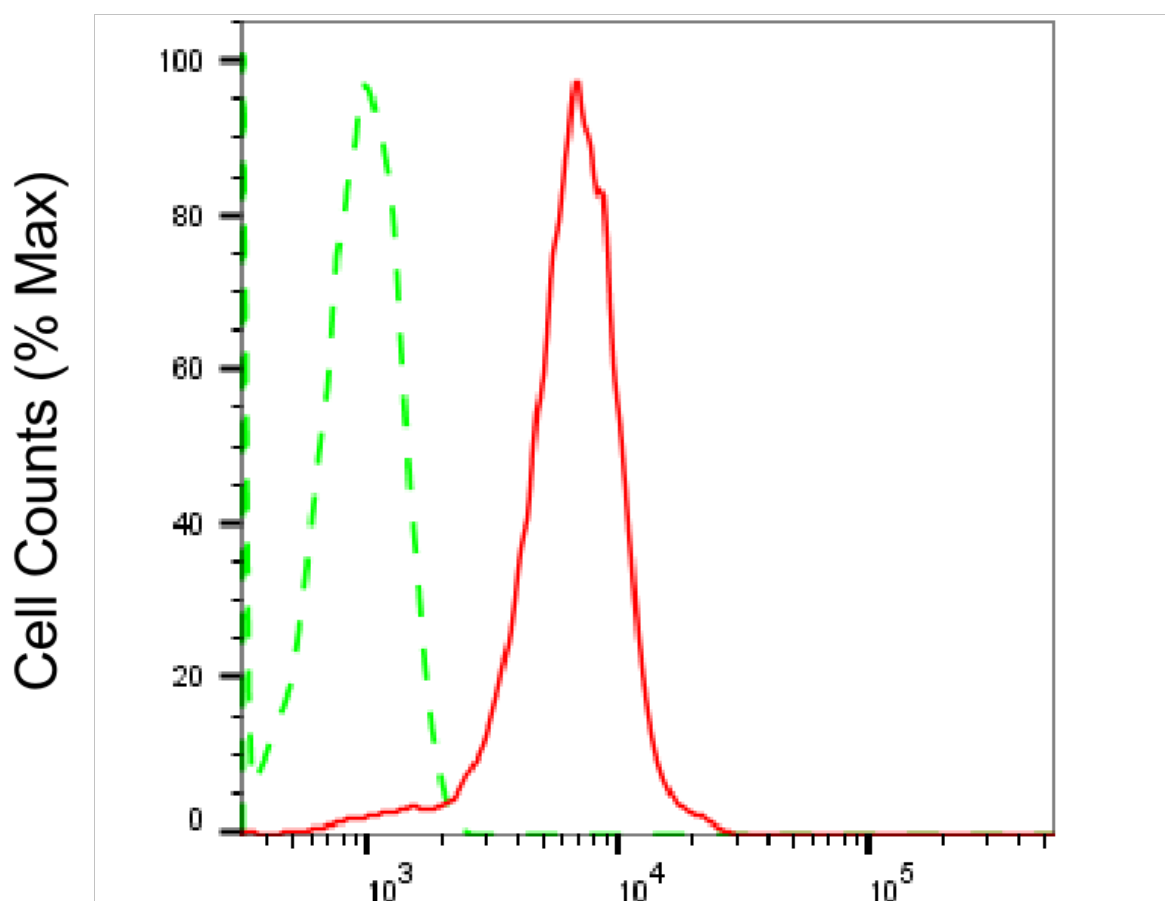
PAGE 2

Flow Cytometry (FCM): 1:2,000

Immunocytochemistry (IC): 1:100-1:1,000

Note: This product is for research use only.

Validation Data



Copyright ©2025 Genuin Biotechnologies LLC

Helicase like transcription factor-Alexa Fluor® 647

Flow cytometric analysis of Helicase like transcription factor expression in HepG2 cells using anti-Helicase like transcription factor antibody (Cat #61467, 1:2,000). Green, isotype control; red, Helicase like transcription factor.

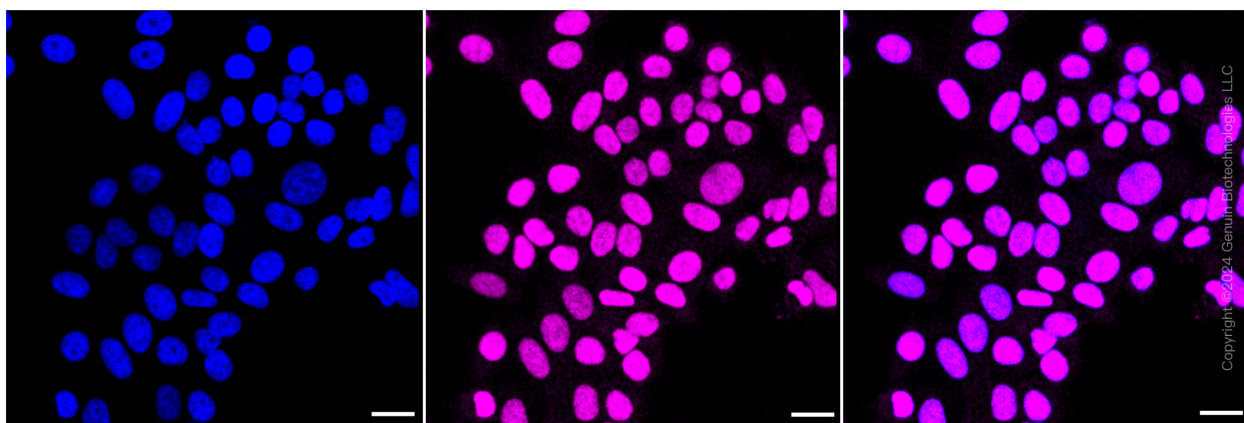
SUPPORT

SUPPORT@GENUINBIOTECH.COM
TEL: +1-540-855-7041

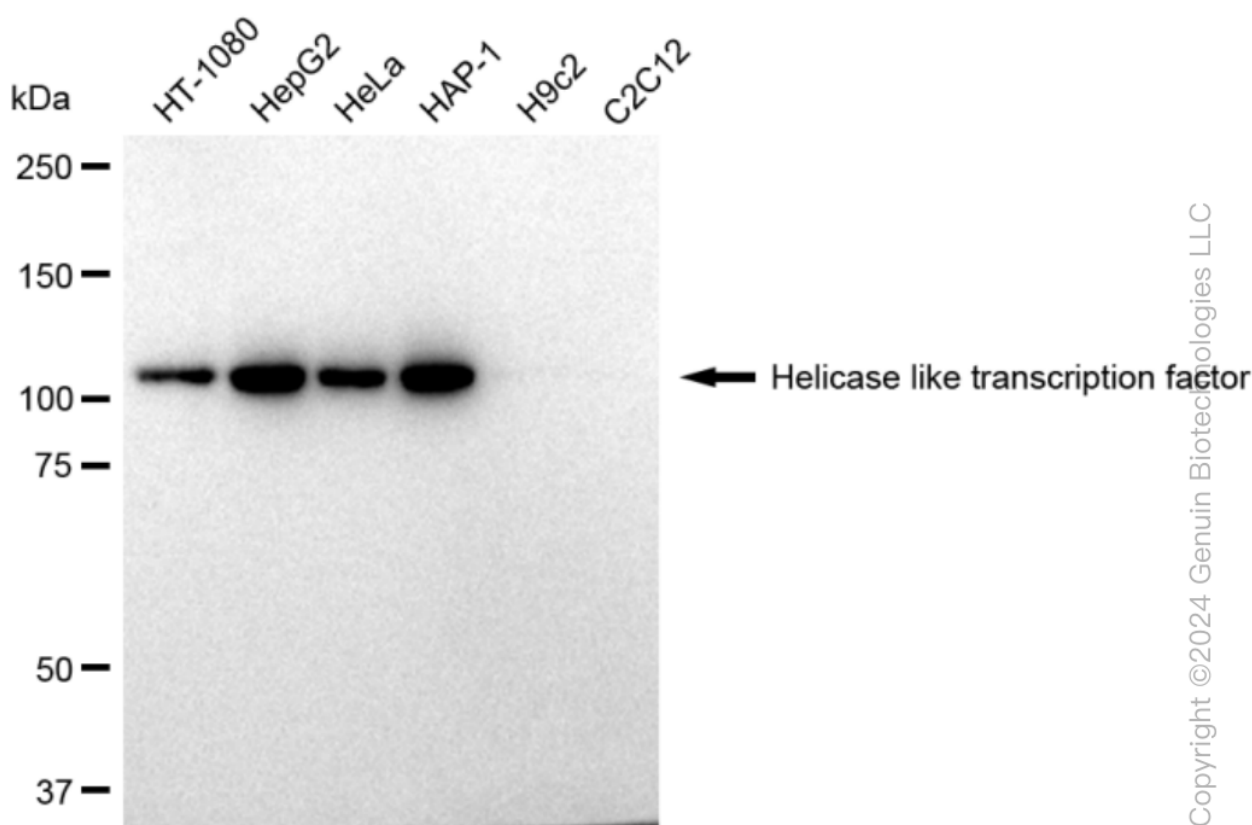
ORDERS

SALES@GENUINBIOTECH.COM
FAX: +1-540-855-7041

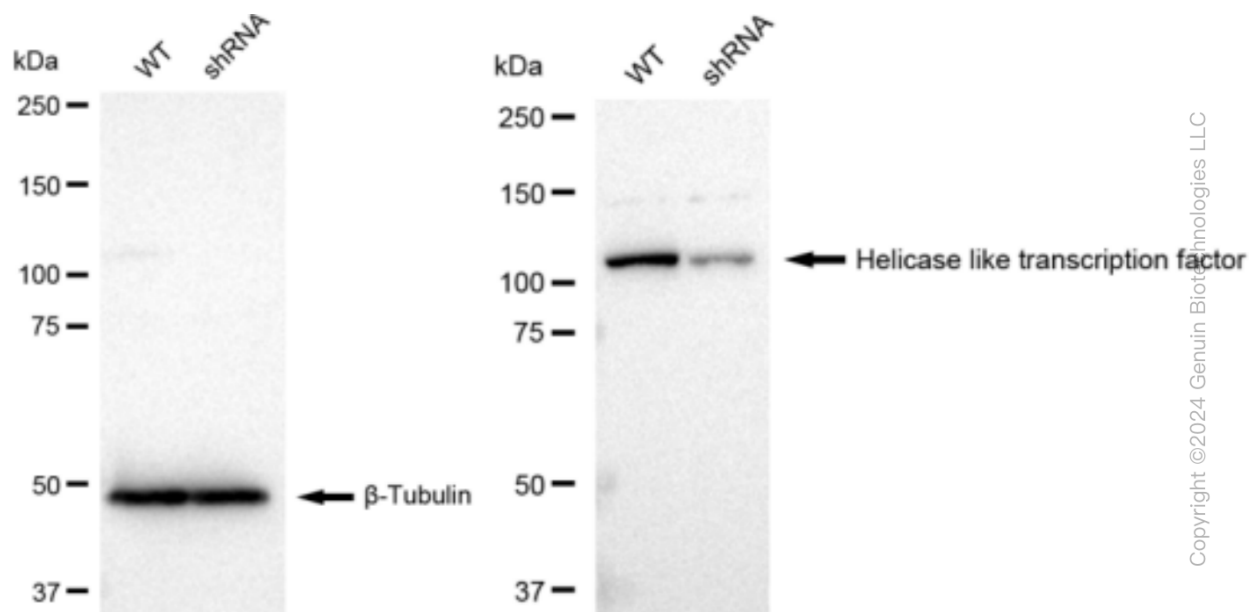
WWW.GENUINBIOTECH.COM



Immunocytochemical staining of HepG2 cells with Helicase like transcription factor antibody (Cat#61467, 1:1,000). Nuclei were stained blue with DAPI; Helicase like transcription factor was stained magenta with Alexa Fluor® 647. Images were taken using Leica stellaris 5. Protein abundance based on laser Intensity and smart gain: High. Scale bar: 20 μ m.

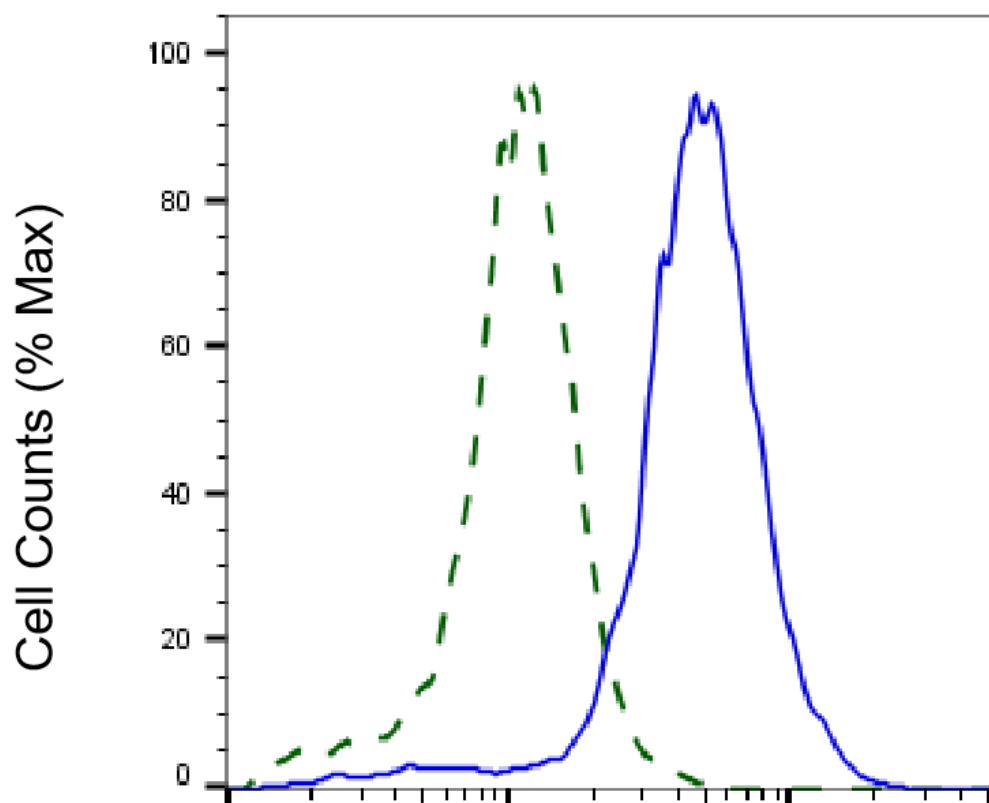


Western blotting analysis using anti-Helicase like transcription factor antibody (Cat#61467). Total cell lysates (30 μ g) from various cell lines were loaded and separated by SDS-PAGE. The blot was incubated with anti-Helicase like transcription factor antibody (Cat#61467, 1:5,000) and HRP-conjugated goat anti-rabbit secondary antibody (Cat#201, 1:20,000) respectively. Image was developed using FeQ™ ECL Substrate Kit (Cat#226).



Copyright ©2024 Genuin Biotechnologies LLC

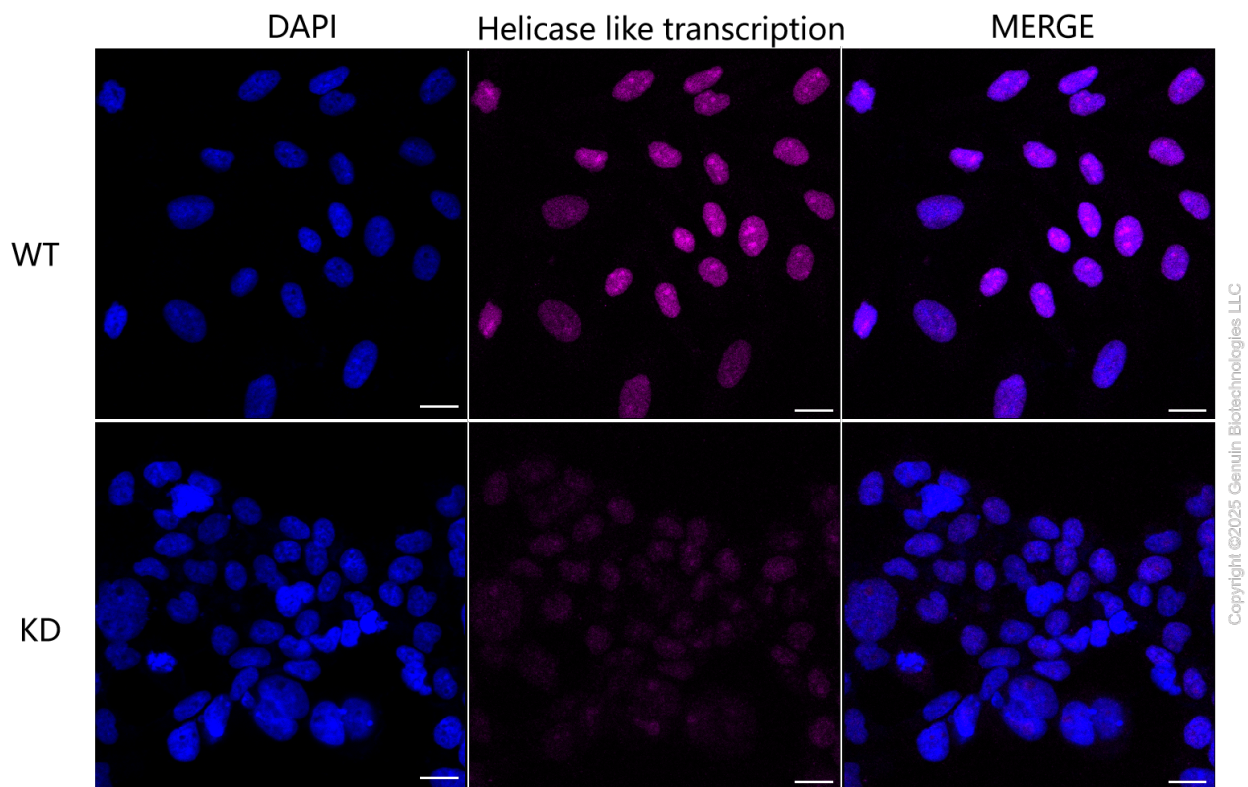
Western blotting analysis using anti-Helicase like transcription factor antibody (Cat#61467). Helicase like transcription factor expression in wild type (WT) and helicase like transcription factor shRNA knockdown (KD) HeLa cells with 30 µg of total cell lysates. β-Tubulin serves as a loading control. The blot was incubated with anti-Helicase like transcription factor antibody (Cat#61467, 1:5,000) and HRP-conjugated goat anti-rabbit secondary antibody (Cat#201, 1:20,000) respectively. Image was developed using FeQ™ ECL Substrate Kit (Cat#226).



Copyright ©2025 Genuin Biotechnologies LLC

Helicase like transcription factor-Alexa Fluor® 647

Validation of Helicase like transcription factor knockdown using flow cytometry. Wild-type(WT, Blue) and knockdown(KD, Green) HeLa cells were stained with anti-Helicase like transcription factor antibody (Cat#61467, 1:2,000) and analyzed using BD flow cytometer.



Immunocytochemical staining of HeLa cells using anti-Helicase like transcription factor antibody (Cat#61467, 1:1,000), Top panel: wild-type (WT); Bottom panel: Helicase like transcription factor shRNA knockdown (KD). Nuclei were stained blue with DAPI; Helicase like transcription factor was stained magenta with Alexa Fluor® 647. Scale bar, 20 μ m.