

KD-Validated Anti-Hsp90 beta Recombinant Rabbit Monoclonal Antibody



Catalog #: 61472

Aliases

HSP90AB1; Heat Shock Protein 90 Alpha Family Class B Member 1; HSPC2; HSPCB; Heat Shock Protein 90kDa Alpha (Cytosolic), Class B Member 1; Heat Shock 90kD Protein 1, Beta; Heat Shock Protein HSP 90-Beta; Heat Shock 84 KDa; HSP90B; HSP84; Heat Shock Protein 90kDa Alpha Family Class B Member 1; Heat Shock 90kDa Protein 1, Beta; Heat Shock Protein 90 KDa; HSP90-Beta; D6S182; HSP 90; HSP 84

Background

Gene Name: HSP90AB1

NCBI Gene Entry: [3326](#)

UniProt Entry: [P08238](#)

Application Information

Molecular Weight: Predicted, 83 kDa, observed, 85 kDa

Clonality: Rabbit monoclonal antibody

Clone ID: 23GB2785

Species Reactivity: Human, mouse, rat

Applications Tested: Western blotting (WB), flow cytometry (FCM), immunocytochemistry (IC)

Immunogen

A synthesized peptide derived from human Hsp90 beta

Isotype

Rabbit IgG

Storage Buffer

Supplied in PBS (pH 7.4) containing 50% glycerol, and 0.02% sodium azide.

Storage

Store at -20 °C for one year.

Recommended Dilutions

Western Blotting (WB): 1:1,000-1:5,000

Flow Cytometry (FCM): 1:2,000

Immunocytochemistry (IC): 1:100-1:1,000

SUPPORT

SUPPORT@GENUINBIOTECH.COM
TEL: +1-540-855-7041

ORDERS

SALES@GENUINBIOTECH.COM
FAX: +1-540-855-7041

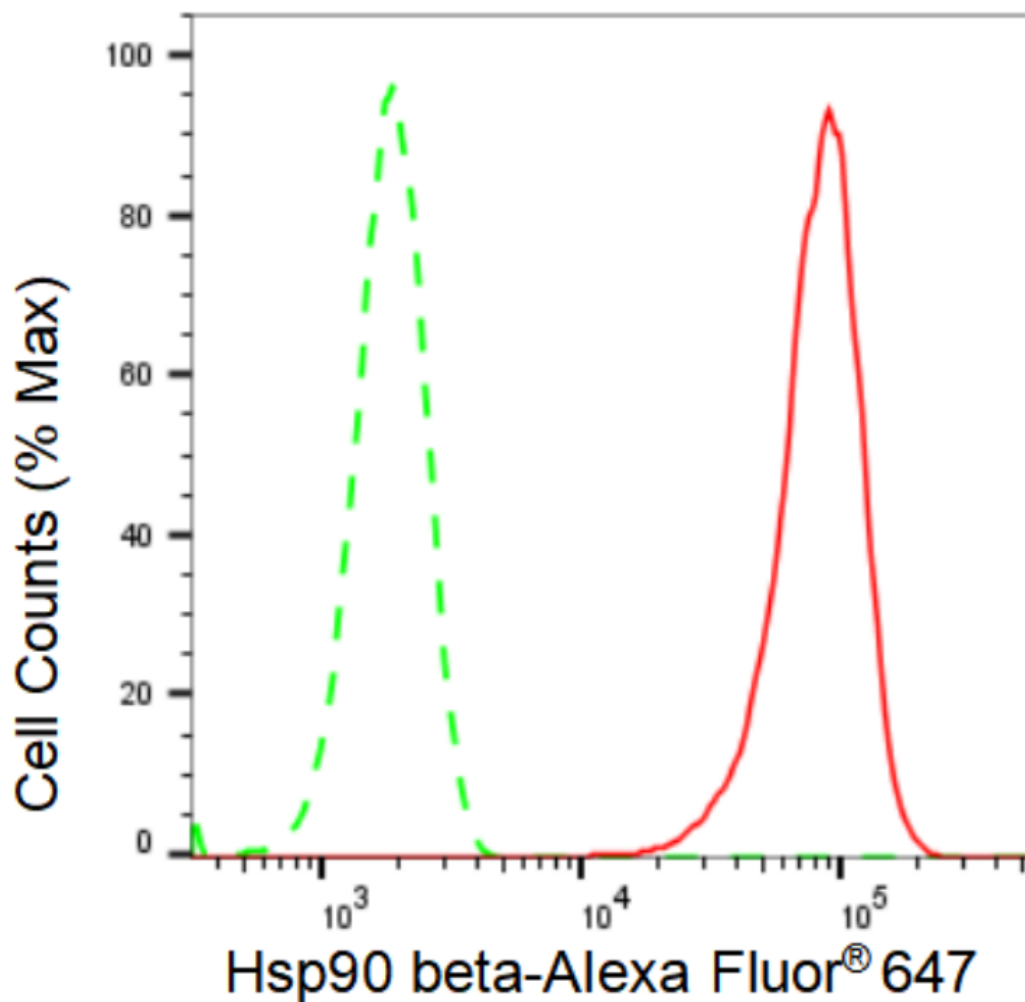
WWW.GENUINBIOTECH.COM

KD-Validated Anti-Hsp90 beta Recombinant Rabbit Monoclonal Antibody

PAGE 2

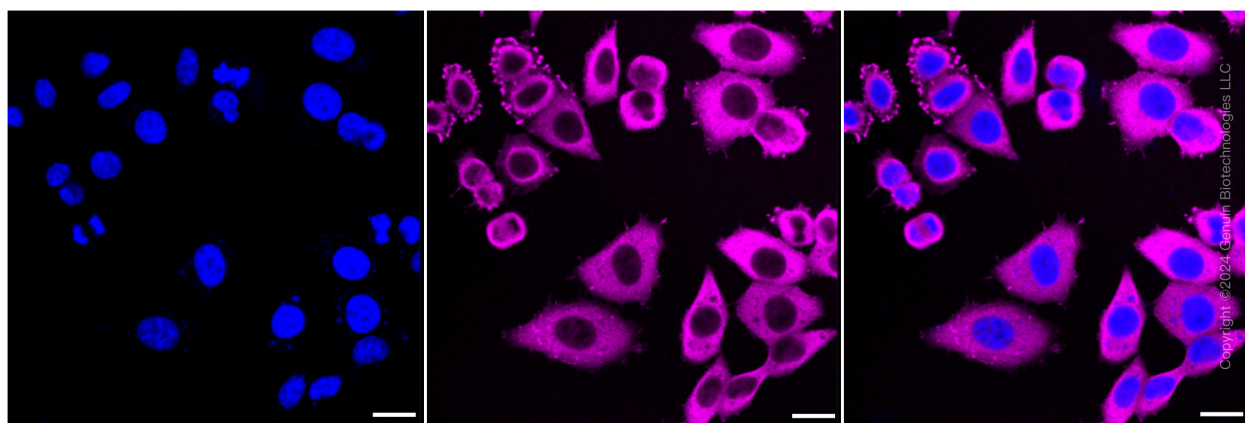
Note: This product is for research use only.

Validation Data



Copyright ©2024 Genuin Biotechnologies LLC

Flow cytometric analysis of Hsp90 beta expression in HepG2 cells using Hsp90 beta antibody (Cat#61472, 1:2,000). Green, isotype control; red, Hsp90 beta.



SUPPORT

SUPPORT@GENUINBIOTECH.COM
TEL: +1-540-855-7041

ORDERS

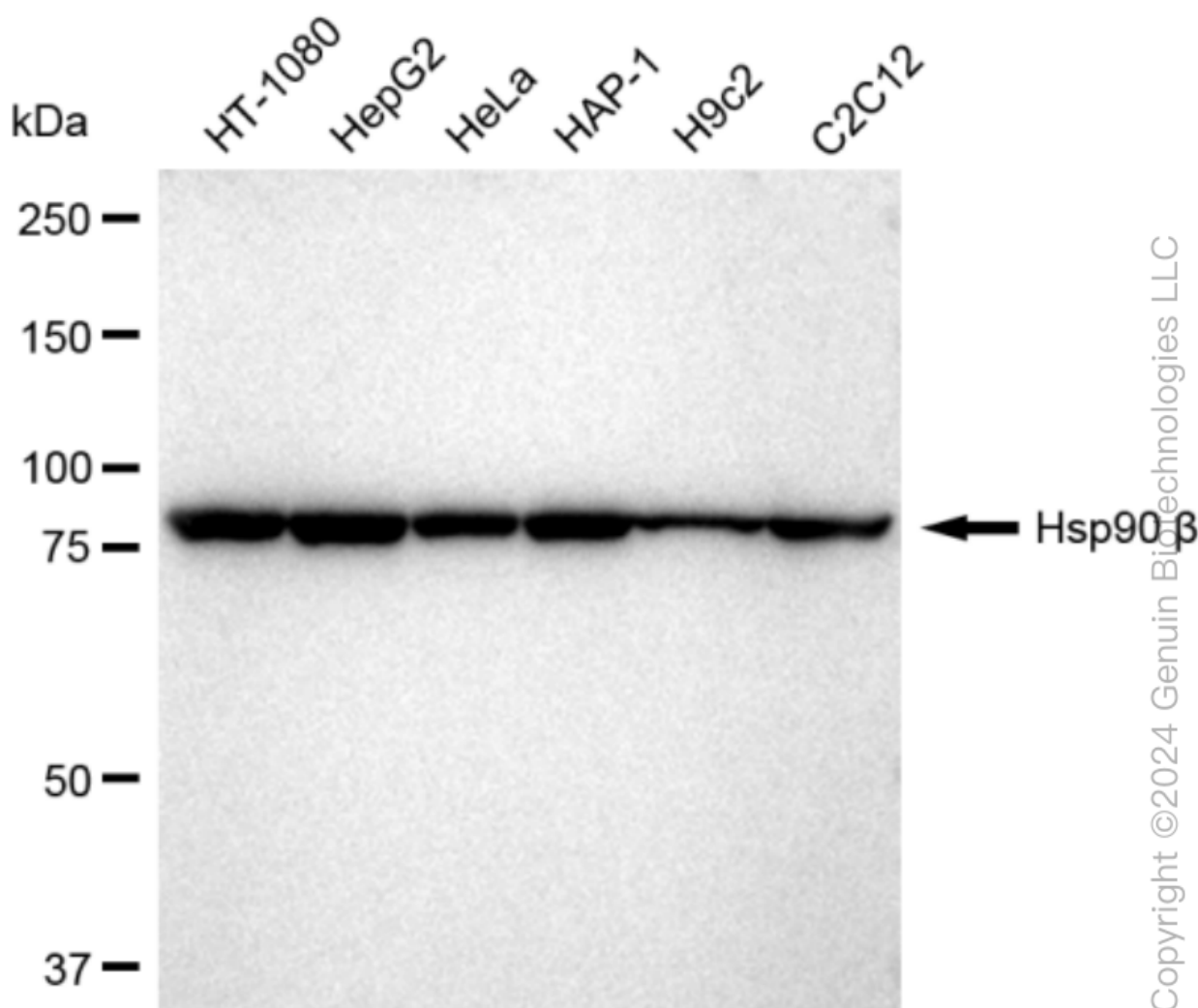
SALES@GENUINBIOTECH.COM
FAX: +1-540-855-7041

WWW.GENUINBIOTECH.COM

KD-Validated Anti-Hsp90 beta Recombinant Rabbit Monoclonal Antibody

PAGE 3

Immunocytochemical staining of HepG2 cells with Hsp90 beta antibody (Cat#61472, 1:1,000). Nuclei were stained blue with DAPI; Hsp90 beta was stained magenta with Alexa Fluor® 647. Images were taken using Leica stellaris 5. Protein abundance based on laser Intensity and smart gain: High. Scale bar: 20 µm.



Western blotting analysis using anti-Hsp90 beta antibody (Cat#61472). Total cell lysates (30 µg) from various cell lines were loaded and separated by SDS-PAGE. The blot was incubated with anti-Hsp90 beta antibody (Cat#61472, 1:5,000) and HRP-conjugated goat anti-rabbit secondary antibody (Cat#201, 1:20,000) respectively. Image was developed using FeQ™ ECL Substrate Kit (Cat#226).

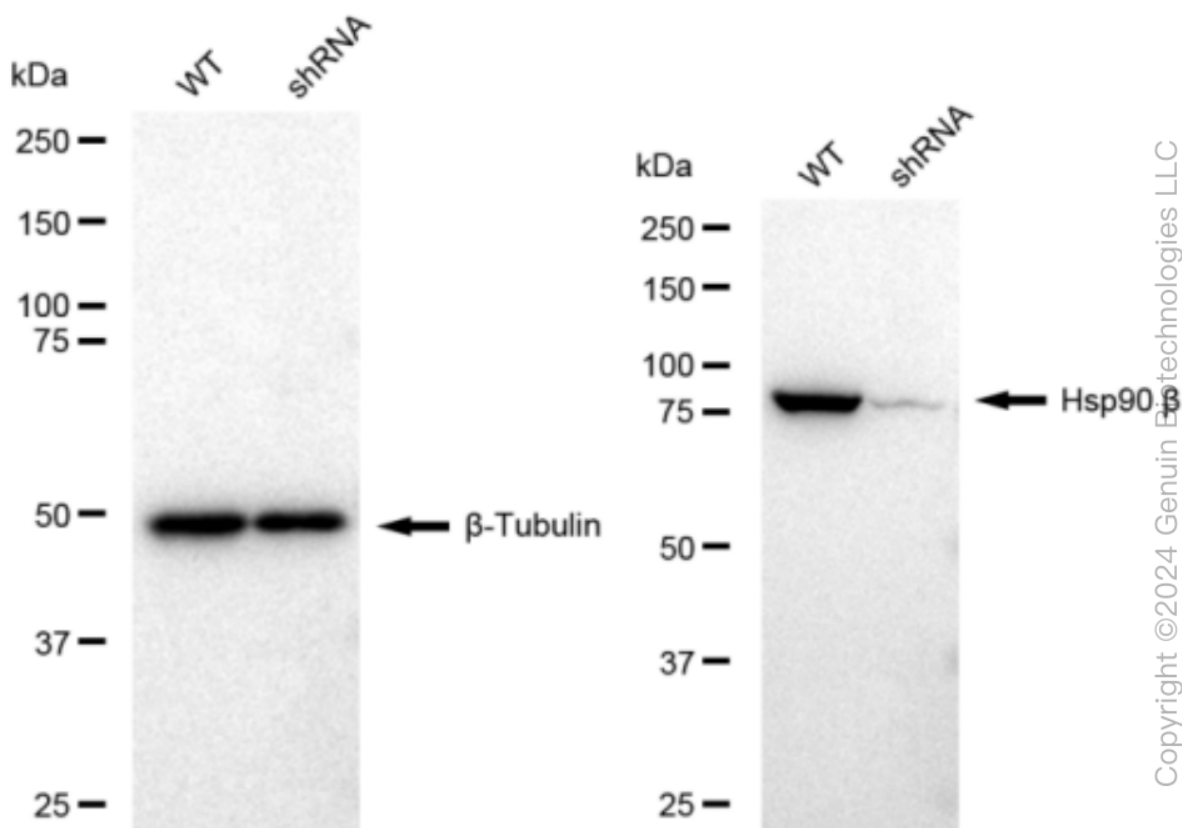
SUPPORT

SUPPORT@GENUINBIOTECH.COM
TEL: +1-540-855-7041

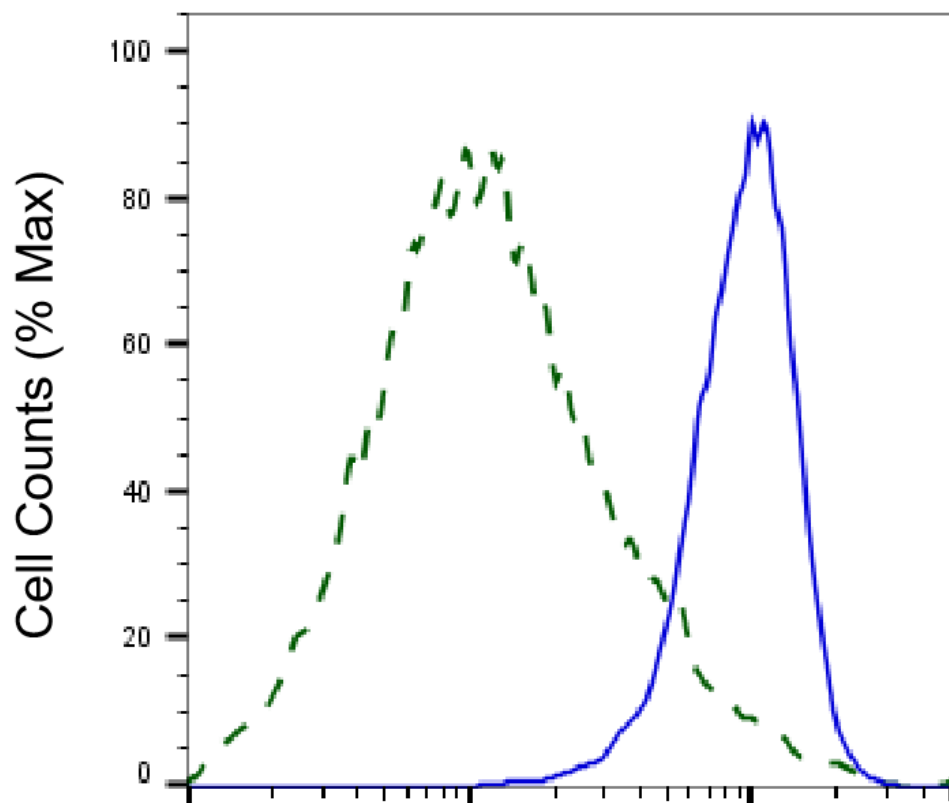
ORDERS

SALES@GENUINBIOTECH.COM
FAX: +1-540-855-7041

WWW.GENUINBIOTECH.COM



Western blotting analysis using anti-Hsp90 beta antibody (Cat#61472). Hsp90 beta expression in wild type (WT) and Hsp90 beta shRNA knockdown (KD) 293T cells with 30 μ g of total cell lysates. β -Tubulin serves as a loading control. The blot was incubated with anti-Hsp90 beta antibody (Cat#61472, 1:5,000) and HRP-conjugated goat anti-rabbit secondary antibody (Cat#201, 1:20,000) respectively. Image was developed using FeQ™ ECL Substrate Kit (Cat#226).



Copyright ©2025 Genuin Biotechnologies LLC

Validation of Hsp90 beta knockdown using flow cytometry. Wild-type(WT, Blue) and knockdown(KD, Green) 293T cells were stained with anti-Hsp90 beta antibody (Cat#61472, 1:2,000) and analyzed using BD flow cytometer.