

KD-Validated Anti-HSPA5 Recombinant Rabbit Monoclonal Antibody



Catalog #: 61474

Aliases

HSPA5; Heat Shock Protein Family A (Hsp70) Member 5; GRP78; Heat Shock 70kDa Protein 5 (Glucose-Regulated Protein, 78kDa); Immunoglobulin Heavy Chain-Binding Protein; Heat Shock Protein 70 Family Protein 5; Heat Shock Protein Family A Member 5; Endoplasmic Reticulum Chaperone BiP; Glucose-Regulated Protein, 78kDa; 78 KDa Glucose-Regulated Protein; Binding-Immunoglobulin Protein; HSP70 Family Protein 5; BiP; BIP; Heat Shock 70kD Protein 5 (Glucose-Regulated Protein, 78kD); Endoplasmic Reticulum Luminal Ca(2+)-Binding; Protein Grp78; Epididymis Secretory Sperm Binding Protein Li 89n; EC 3.6.4.10; HEL-S-89n; GRP-78

Background

Gene Name: HSPA5

NCBI Gene Entry: [3309](#)

UniProt Entry: [P11021](#)

Application Information

Molecular Weight: Predicted, 72 kDa, observed, 74 kDa

Clonality: Rabbit monoclonal antibody

Clone ID: 23GB2445

Species Reactivity: Human, mouse, rat

Applications Tested: Western blotting (WB), flow cytometry (FCM), immunocytochemistry (IC)

Immunogen

A synthesized peptide derived from human GRP78 BiP

Isotype

Rabbit IgG

Storage Buffer

Supplied in PBS (pH 7.4) containing 50% glycerol, and 0.02% sodium azide.

Storage

Store at -20 °C for one year.

Recommended Dilutions

Western Blotting (WB): 1:1,000-1:5,000

Flow Cytometry (FCM): 1:2,000

SUPPORT

SUPPORT@GENUINBIOTECH.COM
TEL: +1-540-855-7041

ORDERS

SALES@GENUINBIOTECH.COM
FAX: +1-540-855-7041

WWW.GENUINBIOTECH.COM

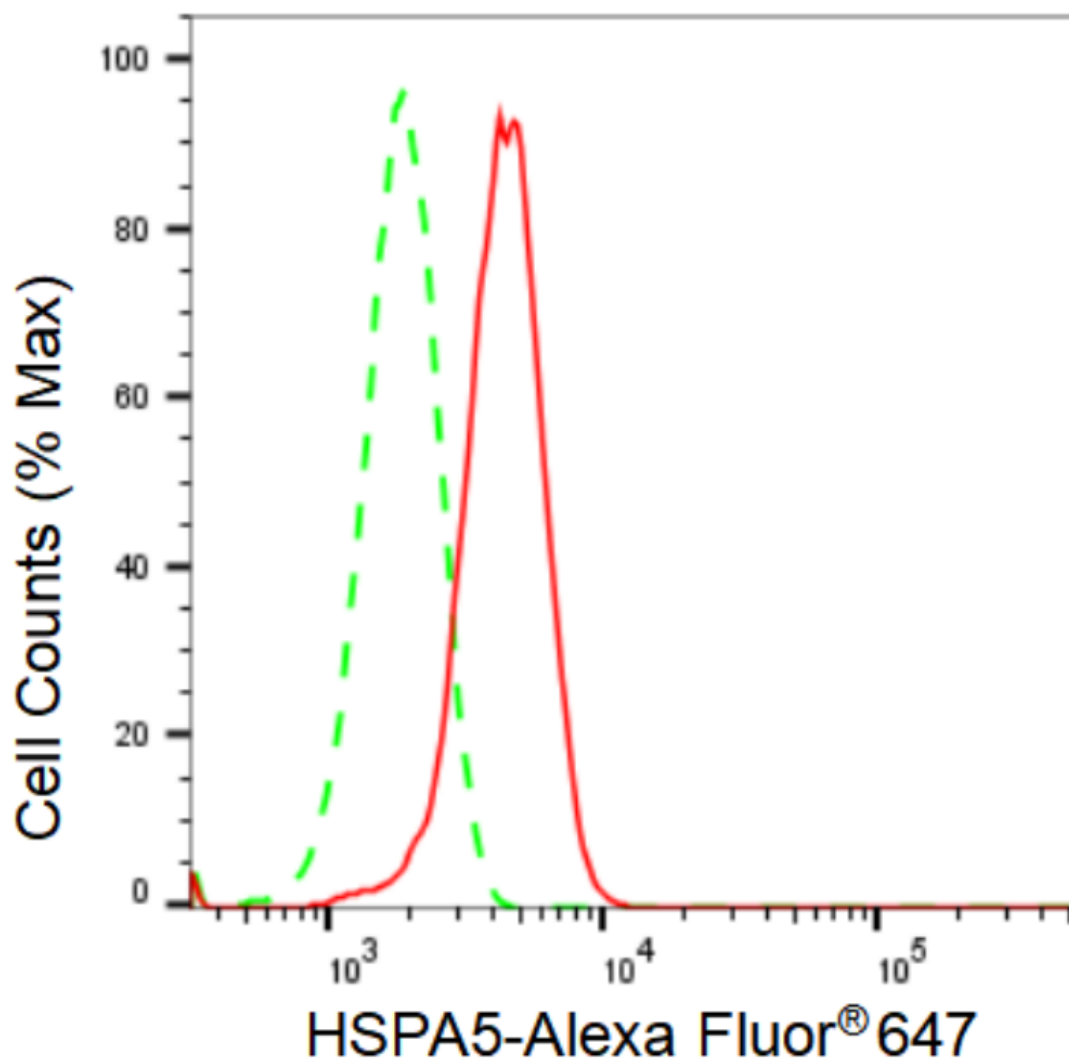
KD-Validated Anti-HSPA5 Recombinant Rabbit Monoclonal Antibody

PAGE 2

Immunocytochemistry (IC): 1:100-1:1,000

Note: This product is for research use only.

Validation Data



Copyright ©2024 Genuin Biotechnologies LLC

Flow cytometric analysis of HSPA5 expression in HepG2 cells using HSPA5 antibody (Cat#61474, 1:2,000). Green, isotype control; red, HSPA5.

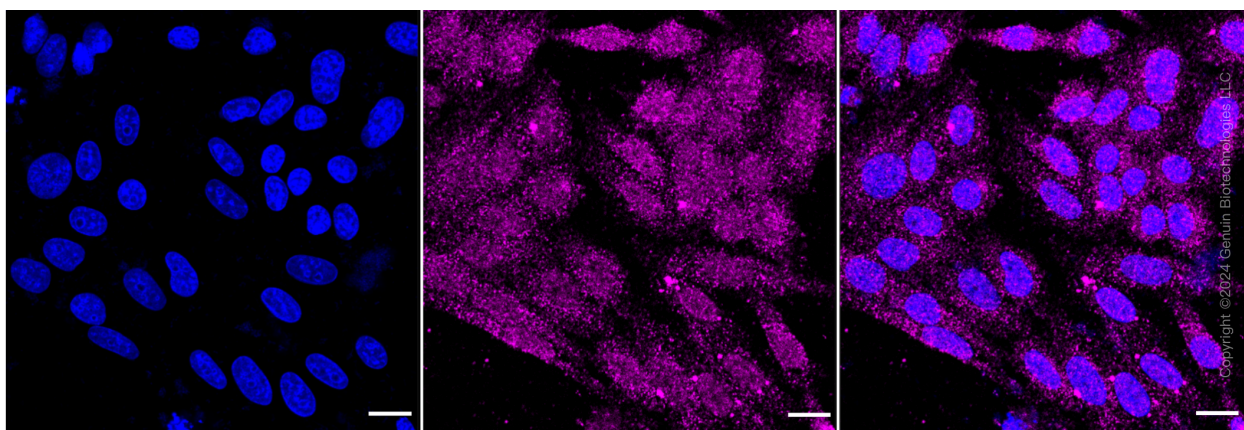
SUPPORT

SUPPORT@GENUINBIOTECH.COM
TEL: +1-540-855-7041

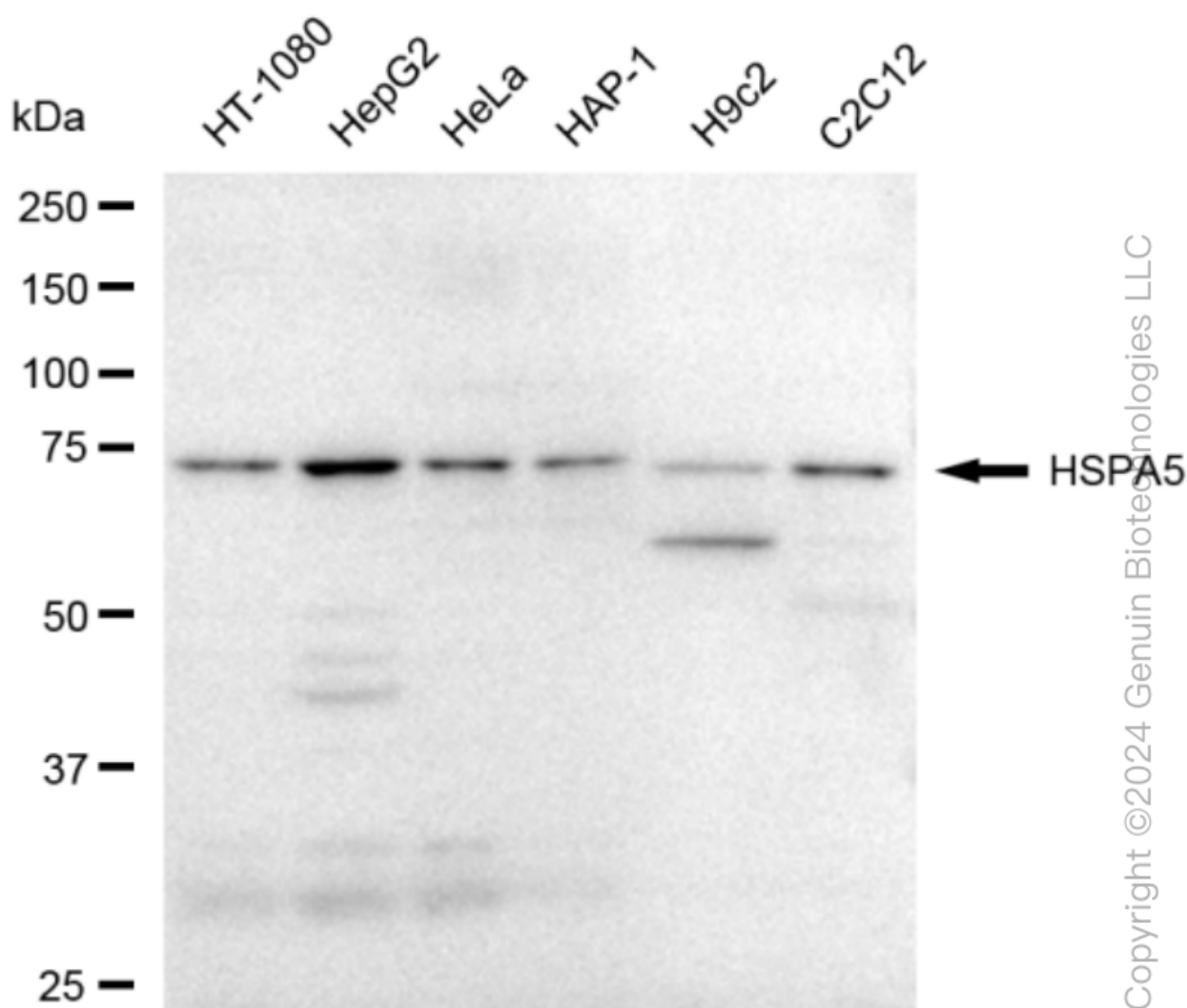
ORDERS

SALES@GENUINBIOTECH.COM
FAX: +1-540-855-7041

WWW.GENUINBIOTECH.COM



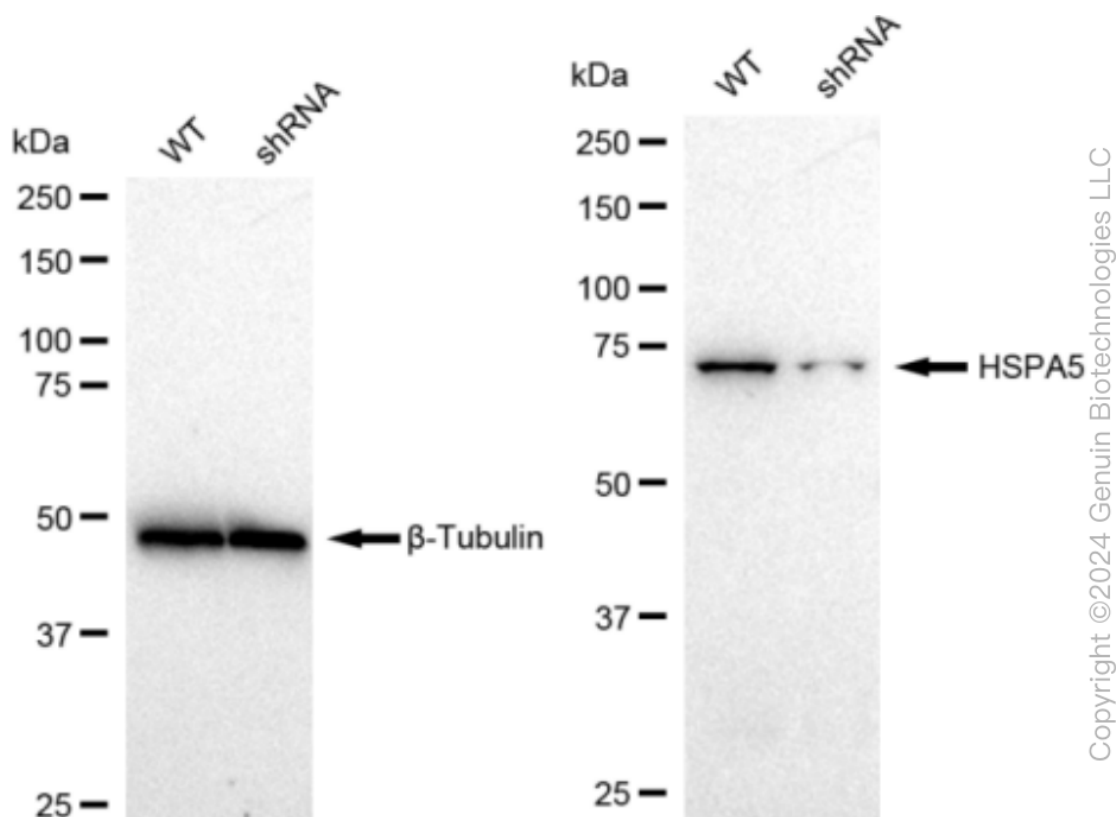
Immunocytochemical staining of HepG2 cells with anti-HSPA5 antibody (Cat#61474, 1:1,000). Nuclei were stained blue with DAPI; HSPA5 was stained magenta with Alexa Fluor® 647. Images were taken using Leica stellaris 5. Protein abundance based on laser Intensity and smart gain: Medium. Scale bar: 20 μ m.



KD-Validated Anti-HSPA5 Recombinant Rabbit Monoclonal Antibody

PAGE 4

Western blotting analysis using anti-HSPA5 antibody (Cat#61474). Total cell lysates (30 µg) from various cell lines were loaded and separated by SDS-PAGE. The blot was incubated with anti-HSPA5 antibody (Cat#61474, 1:5,000) and HRP-conjugated goat anti-rabbit secondary antibody (Cat#201, 1:20,000) respectively. Image was developed using FeQ™ ECL Substrate Kit (Cat#226). HSPA5, heat shock protein family A (Hsp70) member 5.



Western blotting analysis using anti-HSPA5 antibody (Cat#61474). HSPA5 expression in wild type (WT) and HSPA5 shRNA knockdown (KD) 293T cells with 30 µg of total cell lysates. β -Tubulin serves as a loading control. The blot was incubated with anti-HSPA5 antibody (Cat#61474, 1:5,000) and HRP-conjugated goat anti-rabbit secondary antibody (Cat#201, 1:20,000) respectively. Image was developed using FeQ™ ECL Substrate Kit (Cat#226).

SUPPORT

SUPPORT@GENUINBIOTECH.COM
TEL: +1-540-855-7041

ORDERS

SALES@GENUINBIOTECH.COM
FAX: +1-540-855-7041

WWW.GENUINBIOTECH.COM