

KD-Validated Anti-Hsc70 Recombinant Rabbit Monoclonal Antibody



Catalog #: 61475

Aliases

HSPA8; Heat Shock Protein Family A (Hsp70) Member 8; HSC70; HSP73; HSPA10; HSC71; Lipopolysaccharide-Associated Protein 1; Heat Shock Cognate 71 KDa Protein; Heat Shock 70kDa Protein 8; LPS-Associated Protein 1; LAP-1; Epididymis Secretory Sperm Binding Protein Li 72p; N-Myristoyltransferase Inhibitor Protein 71; Constitutive Heat Shock Protein 70; Epididymis Luminal Protein 33; Heat Shock Cognate Protein 54; Heat Shock 70 KDa Protein 8; Heat Shock 70kd Protein 10; Heat Shock 70kD Protein 8; EC 3.6.4.10; HEL-S-72p; HEL-33; HSC54; HSP71; NIP71; LAP1

Background

Gene Name: HSPA8

NCBI Gene Entry: [3312](#)

UniProt Entry: [P11142](#)

Application Information

Molecular Weight: Predicted, 71 kDa, observed, 70 kDa

Clonality: Rabbit monoclonal antibody

Clone ID: 23GB2675

Species Reactivity: Human, mouse, rat

Applications Tested: Western blotting (WB), flow cytometry (FCM), immunocytochemistry (IC)

Immunogen

A synthesized peptide derived from human Hsc70

Isotype

Rabbit IgG

Storage Buffer

Supplied in PBS (pH 7.4) containing 50% glycerol, and 0.02% sodium azide.

Storage

Store at -20 °C for one year.

Recommended Dilutions

Western Blotting (WB): 1:1,000-1:5,000

Flow Cytometry (FCM): 1:2,000

SUPPORT

SUPPORT@GENUINBIOTECH.COM
TEL: +1-540-855-7041

ORDERS

SALES@GENUINBIOTECH.COM
FAX: +1-540-855-7041

WWW.GENUINBIOTECH.COM

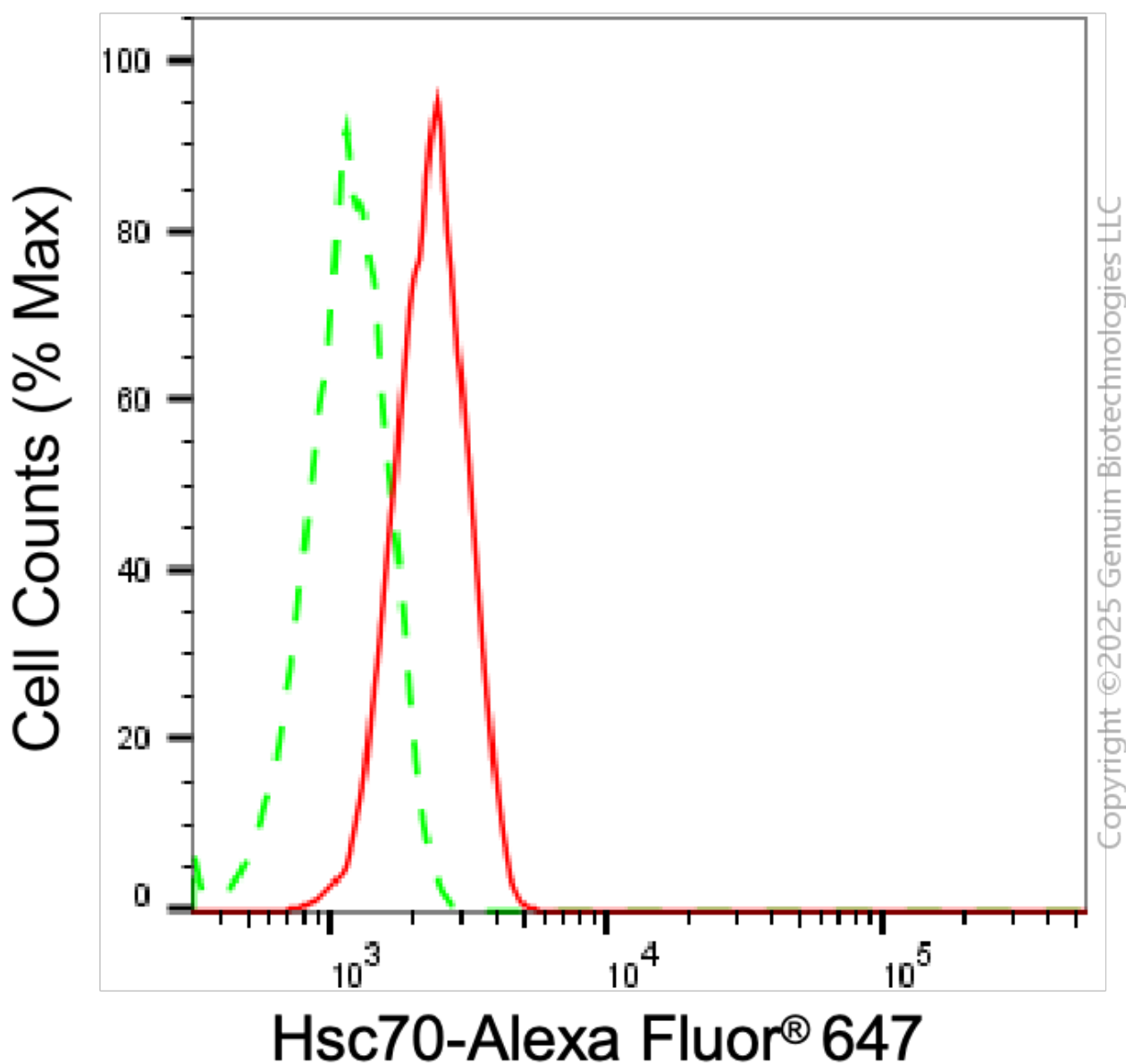
KD-Validated Anti-Hsc70 Recombinant Rabbit Monoclonal Antibody

PAGE 2

Immunocytochemistry (IC): 1:100-1:1,000

Note: This product is for research use only.

Validation Data



Flow cytometric analysis of Hsc70 expression in HT-1080 cells using anti-Hsc70 antibody (Cat#61475, 1:2,000). Green, isotype control; red, Hsc70.

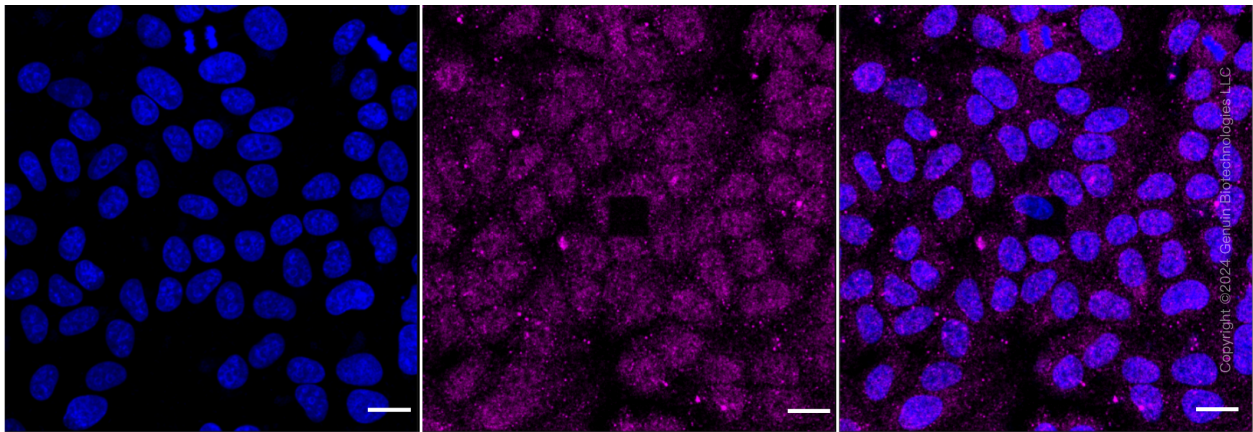
SUPPORT

SUPPORT@GENUINBIOTECH.COM
TEL: +1-540-855-7041

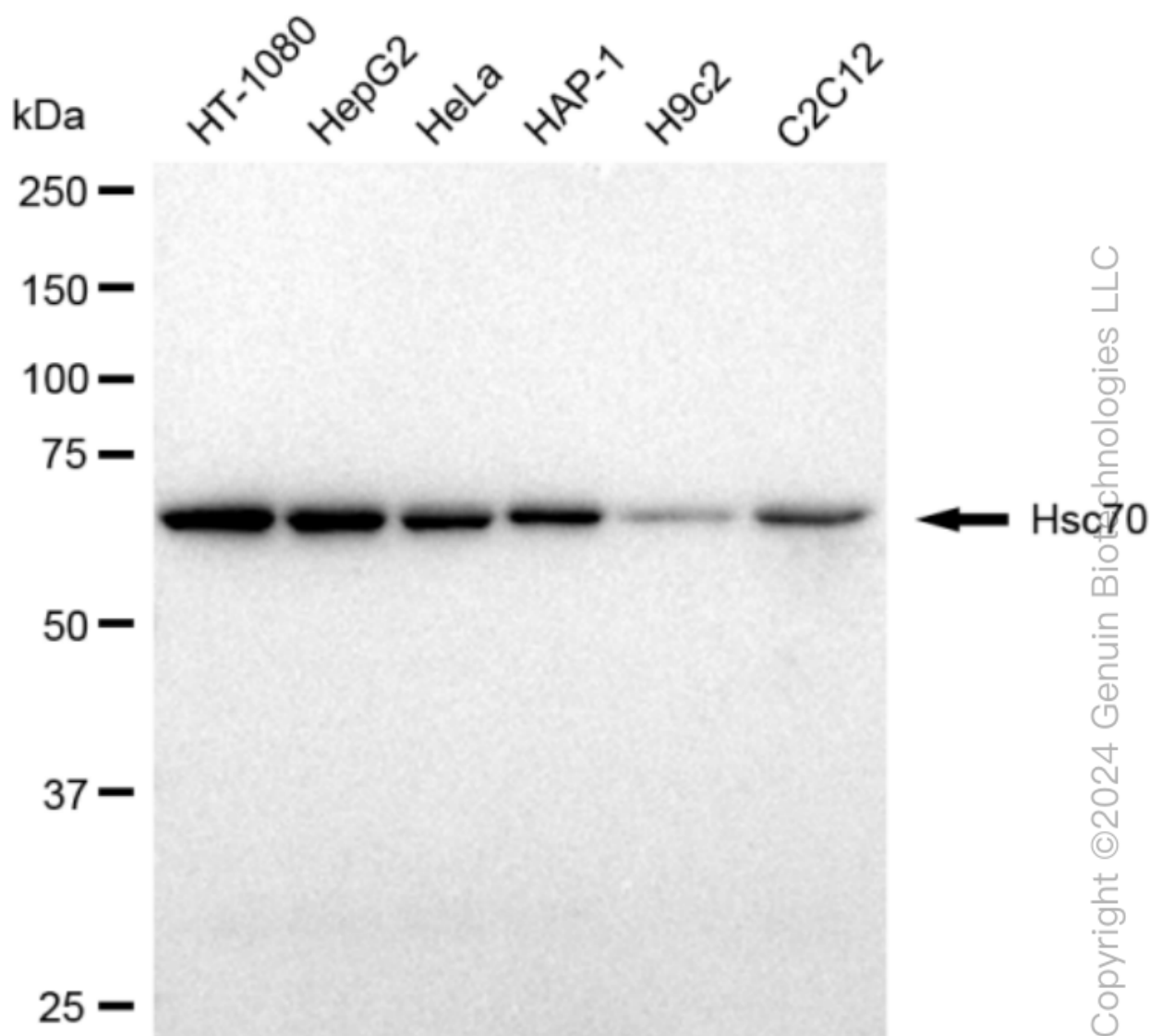
ORDERS

SALES@GENUINBIOTECH.COM
FAX: +1-540-855-7041

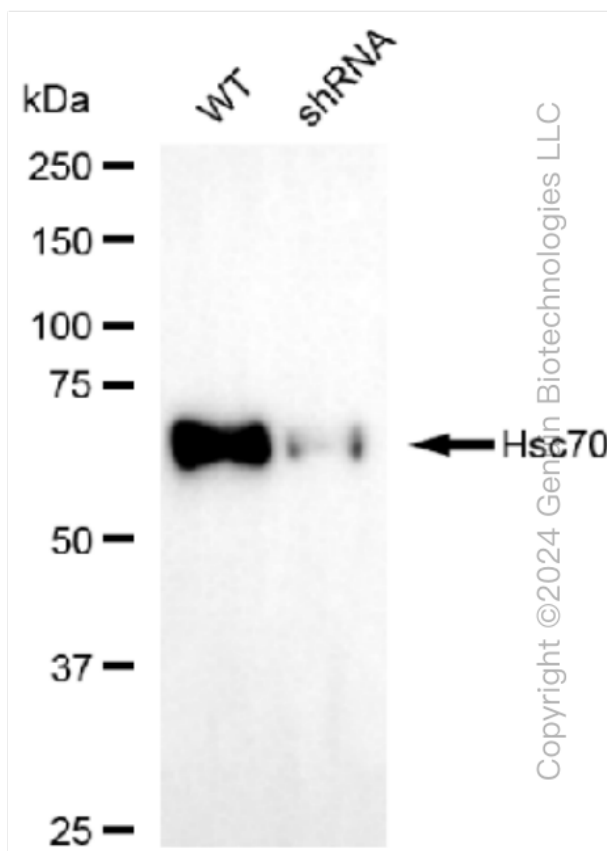
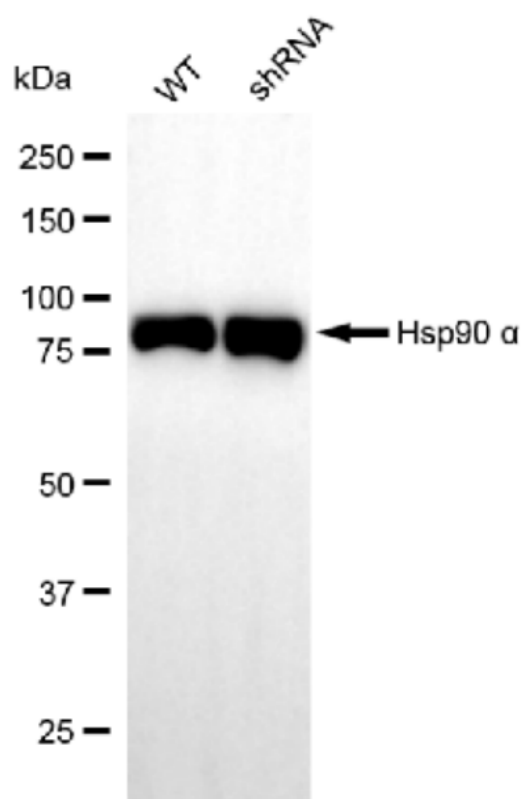
WWW.GENUINBIOTECH.COM



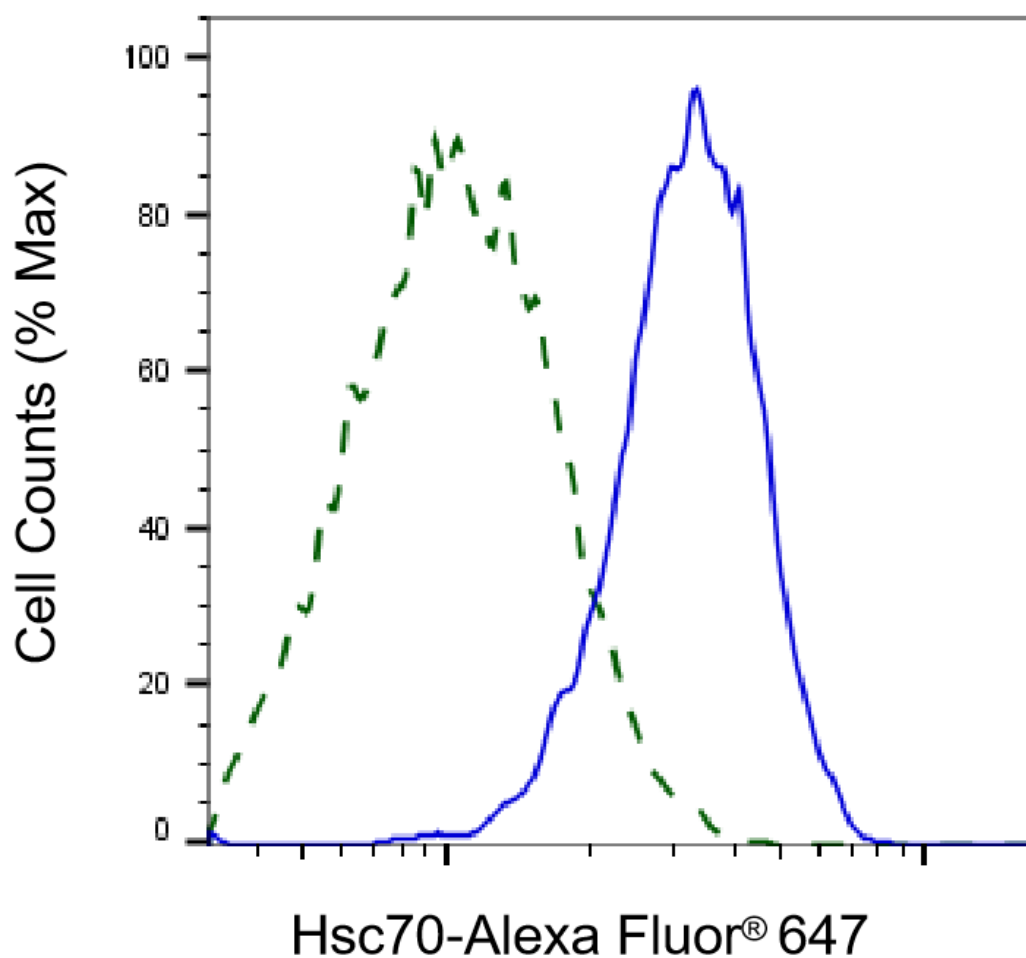
Immunocytochemical staining of HepG2 cells with anti-Hsc70 antibody (Cat#61475, 1:1,000). Nuclei were stained blue with DAPI; Hsc70 was stained magenta with Alexa Fluor® 647. Images were taken using Leica stellaris 5. Protein abundance based on laser Intensity and smart gain: Medium. Scale bar: 20 μ m.



Western blotting analysis using anti-Hsc70 antibody (Cat#61475). Total cell lysates (30 µg) from various cell lines were loaded and separated by SDS-PAGE. The blot was incubated with anti-Hsc70 antibody (Cat#61475, 1:5,000) and HRP-conjugated goat anti-rabbit secondary antibody (Cat#201, 1:20,000) respectively. Image was developed using FeQ™ ECL Substrate Kit (Cat#226).



Western blotting analysis using anti-Hsc70 antibody (Cat#61475). Hsc70 expression in wild type (WT) and Hsc70 shRNA knockdown (KD) 293T cells with 30 µg of total cell lysates. β -Tubulin serves as a loading control. The blot was incubated with anti-Hsc70 antibody (Cat#61475, 1:5000) and HRP-conjugated goat anti-rabbit secondary antibody (Cat#201, 1:20000) respectively. Image was developed using FeQ™ ECL Substrate Kit (Cat#226).



Validation of Hsc70 knockdown using flow cytometry. Wild-type(WT, Blue) and knockdown(KD, Green) 293T cells were stained with anti-Hsc70 antibody (Cat#61475, 1:2,000) and analyzed using BD flow cytometer.