

# KD-Validated Anti-Ribosomal Protein S6 Kinase B1 Recombinant Rabbit Monoclonal



**Catalog #: 61477**

## Aliases

RPS6KB1; Ribosomal Protein S6 Kinase B1; S6K1; P70(S6K)-Alpha; STK14A; PS6K; S6K; Serine/Threonine-Protein Kinase 14A; Ribosomal Protein S6 Kinase Beta-1; Ribosomal Protein S6 Kinase I; EC 2.7.11.1; S6K-Beta-1; P70 S6KA; Ribosomal Protein S6 Kinase, 70kDa, Polypeptide 1; Ribosomal Protein S6 Kinase, 70kD, Polypeptide 1; 70 KDa Ribosomal Protein S6 Kinase 1; Serine/Threonine Kinase 14 Alpha; P70 Ribosomal S6 Kinase Alpha; P70 S6 Kinase Alpha; P70 S6K-Alpha; P70-Alpha; P70-S6K 1; EC 2.7.11; P70-S6K; P70S6K1

## Background

Gene Name: RPS6KB1

NCBI Gene Entry: [6198](#)

UniProt Entry: [P23443](#)

## Application Information

Molecular Weight: Predicted, 59 kDa; observed, 60-75 kDa

Clonality: Rabbit monoclonal antibody

Clone ID: 25GB2615

Species Reactivity: Human, mouse, rat

Applications Tested: Western blotting (WB), flow cytometry (FCM), immunocytochemistry (IC)

## Immunogen

A synthesized peptide derived from human S6K1

## Isotype

Rabbit IgG

## Storage Buffer

Supplied in PBS (pH 7.4) containing 50% glycerol, and 0.02% sodium azide.

## Storage

Store at -20 °C for one year.

## Recommended Dilutions

Western Blotting (WB): 1:1,000-1:5,000

Flow Cytometry (FCM): 1:2,000

Immunocytochemistry (IC): 1:100-1:1,000

---

### SUPPORT

SUPPORT@GENUINBIOTECH.COM  
TEL: +1-540-855-7041

### ORDERS

SALES@GENUINBIOTECH.COM  
FAX: +1-540-855-7041

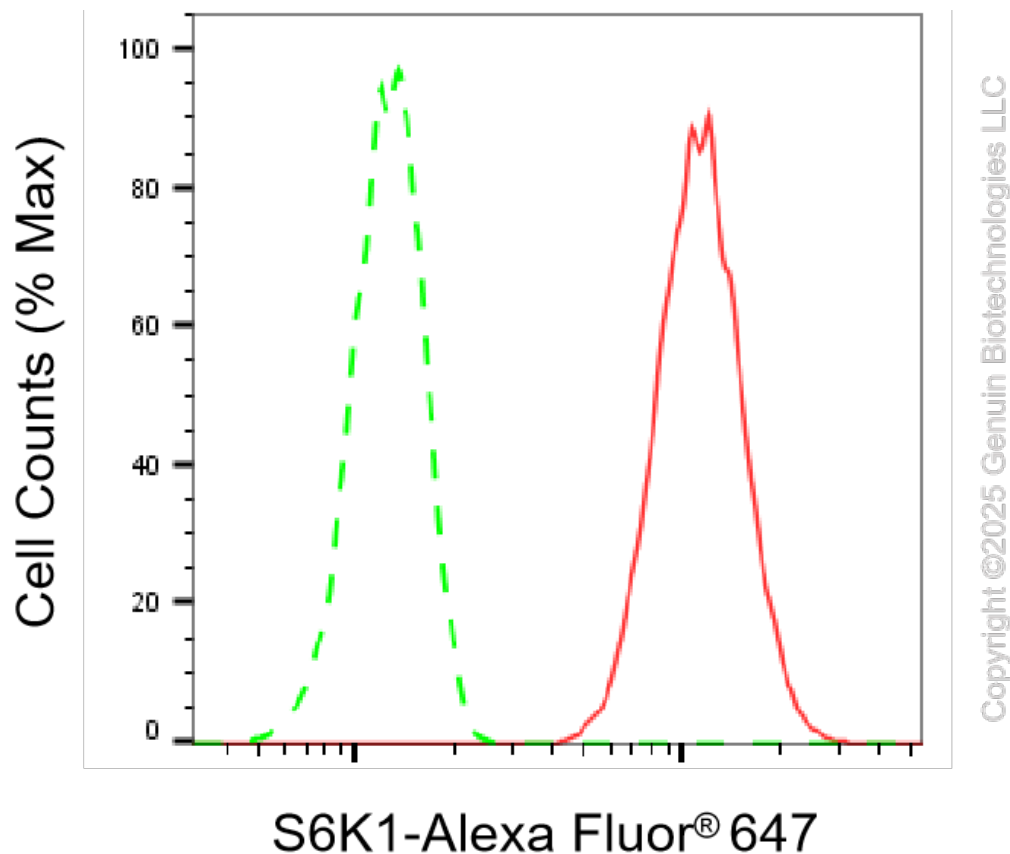
[WWW.GENUINBIOTECH.COM](http://WWW.GENUINBIOTECH.COM)

## KD-Validated Anti-Ribosomal Protein S6 Kinase B1 Recombinant Rabbit Monoclonal

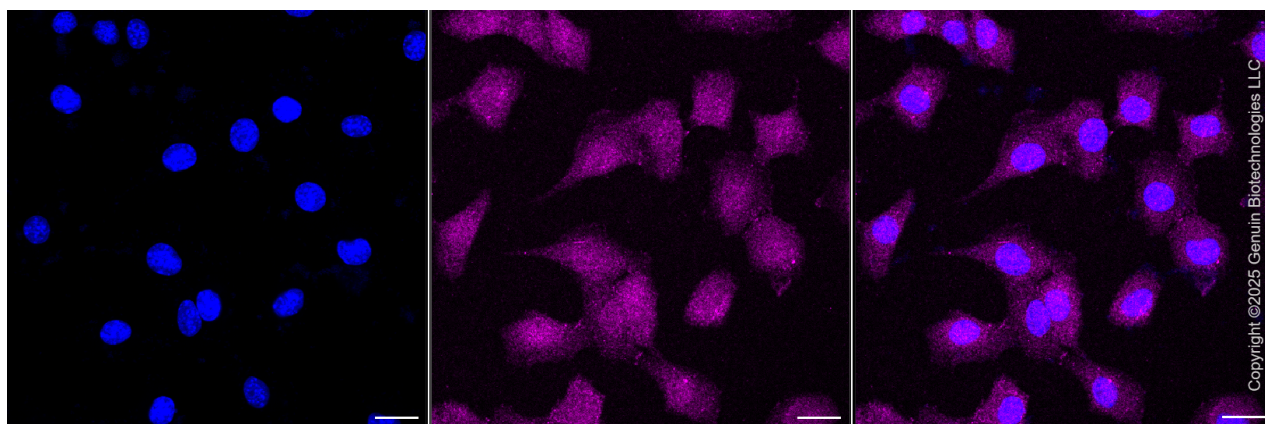
PAGE 2

**Note:** This product is for research use only.

### Validation Data



Flow cytometric analysis of S6K1 expression in C2C12 cells using S6K1 antibody (Cat#61477, 1:2,000). Green, isotype control; red, S6K1.



Immunocytochemical staining of H9C2 cells with anti-S6K1 antibody (Cat#61477, 1:1,000). Nuclei were stained blue with DAPI; S6K1 was stained magenta with Alexa Fluor® 647. Images were taken using Leica stellaris 5. Protein abundance based on laser Intensity and smart gain:

#### SUPPORT

SUPPORT@GENUINBIOTECH.COM  
TEL: +1-540-855-7041

#### ORDERS

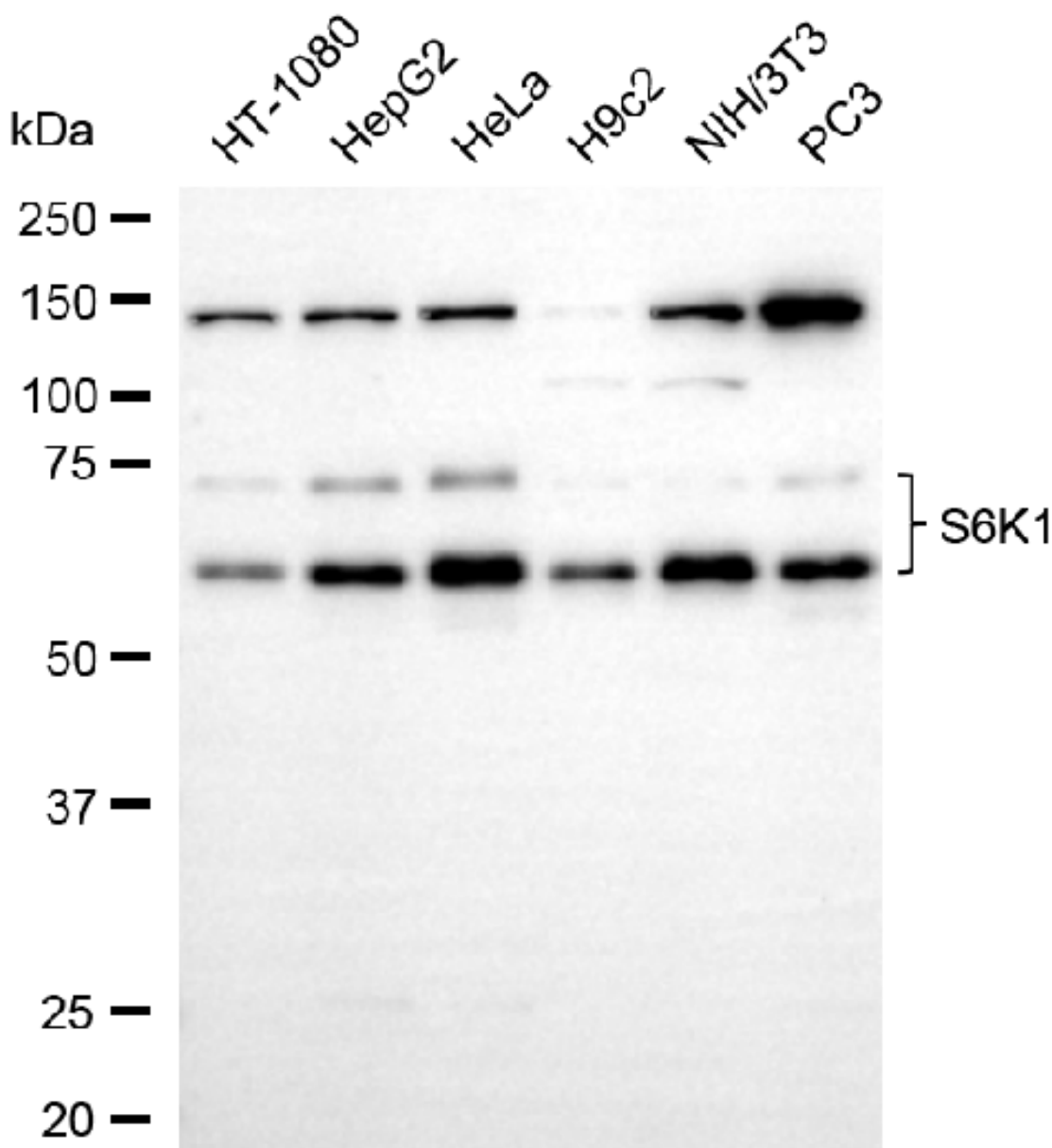
SALES@GENUINBIOTECH.COM  
FAX: +1-540-855-7041

[WWW.GENUINBIOTECH.COM](http://WWW.GENUINBIOTECH.COM)

## KD-Validated Anti-Ribosomal Protein S6 Kinase B1 Recombinant Rabbit Monoclonal

PAGE 3

Medium. Scale bar, 20  $\mu$ m.



Copyright ©2025 Genuin Biotechnologies LLC

Western blotting analysis using anti-S6K1 antibody (Cat#61477). Total cell lysates (20  $\mu$ g) from various cell lines were loaded and separated by SDS-PAGE. The blot was incubated with anti-S6K1 antibody (Cat#61477, 1:5,000) and HRP-conjugated goat anti-rabbit secondary antibody (Cat#201, 1:20,000) respectively. Image was developed using NaQ™ ECL Substrate Kit (Cat#716).

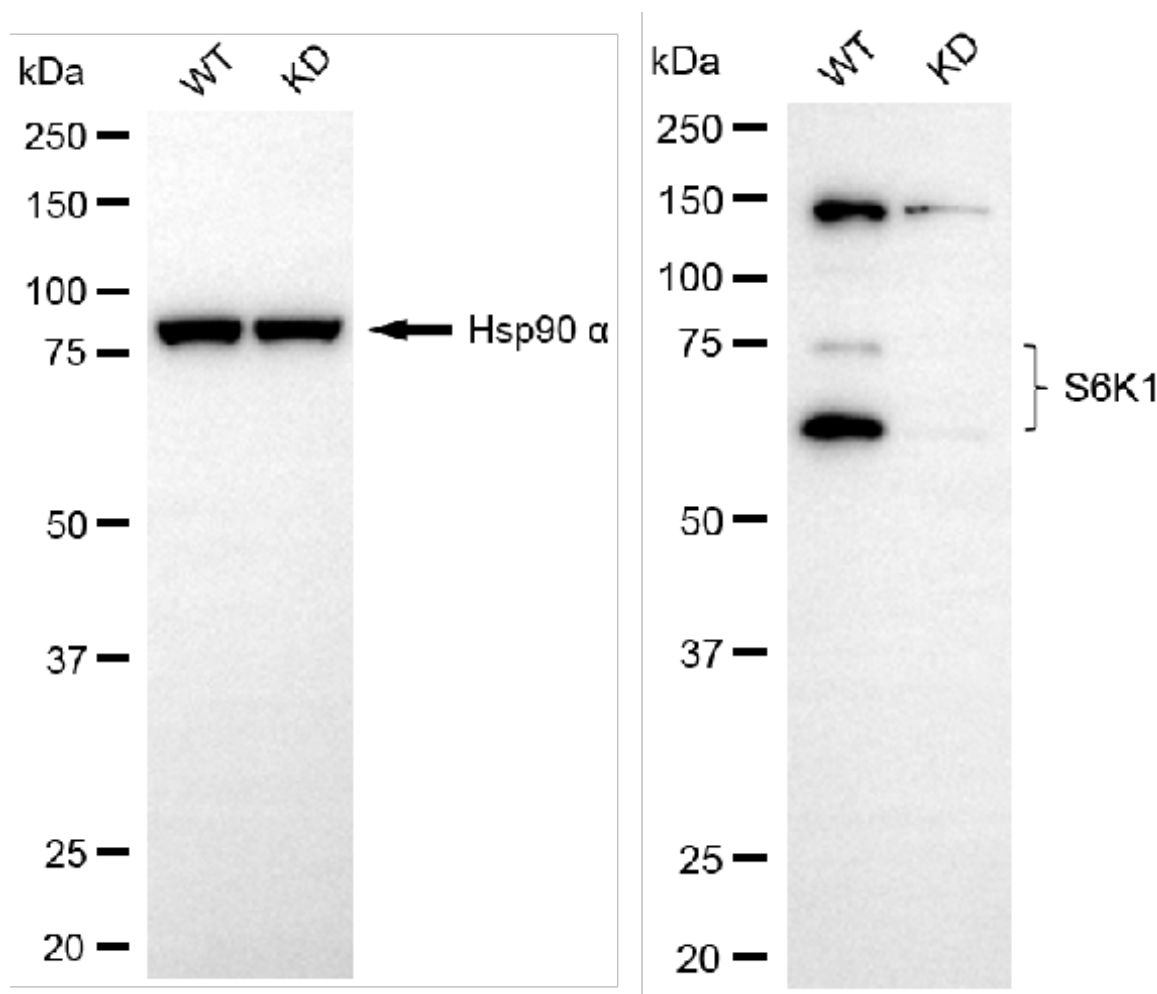
### SUPPORT

SUPPORT@GENUINBIOTECH.COM  
TEL: +1-540-855-7041

### ORDERS

SALES@GENUINBIOTECH.COM  
FAX: +1-540-855-7041

WWW.GENUINBIOTECH.COM



Copyright ©2025 Genuin Biotechnologies LLC

Western blotting analysis using anti-S6K1 antibody (Cat#61477). S6K1 expression in wild-type (WT) and RPS6KB1 knockdown (KD) HSHC cells with 20 µg of total cell lysates. Hsp90 α serves as a loading control. The blot was incubated with anti-S6K1 antibody (Cat#61477, 1:5,000) and HRP-conjugated goat anti-rabbit secondary antibody (Cat#201, 1:20,000) respectively. Image was developed using FeQ™ ECL Substrate Kit (Cat#226).