

# KD-Validated Anti-DNA ligase 4 Recombinant Rabbit Monoclonal Antibody



**Catalog #: 61478**

## Aliases

LIG4; DNA Ligase 4; Polydeoxyribonucleotide Synthase [ATP] 4; DNA Ligase IV; Ligase IV, DNA, ATP-Dependent; Polynucleotide Ligase; DNA Repair Enzyme; DNA Joinase; EC 6.5.1.1; Sealase; LIG4S

## Background

Gene Name: LIG4

NCBI Gene Entry: [3981](#)

UniProt Entry: [P49917](#)

## Application Information

Molecular Weight: Predicted, 104 kDa, observed, 103 kDa

Clonality: Rabbit monoclonal antibody

Clone ID: 23GB2515

Species Reactivity: Human

Applications Tested: Western blotting (WB), flow cytometry (FCM), immunocytochemistry (IC)

## Immunogen

A synthesized peptide derived from human DNA Ligase IV

## Isotype

Rabbit IgG

## Storage Buffer

Supplied in PBS (pH 7.4) containing 50% glycerol, and 0.02% sodium azide.

## Storage

Store at -20 °C for one year.

## Recommended Dilutions

Western Blotting (WB): 1:1,000-1:5,000

Flow Cytometry (FCM): 1:2,000

Immunocytochemistry (IC): 1:100-1:1,000

**Note:** This product is for research use only.

---

### SUPPORT

SUPPORT@GENUINBIOTECH.COM  
TEL: +1-540-855-7041

### ORDERS

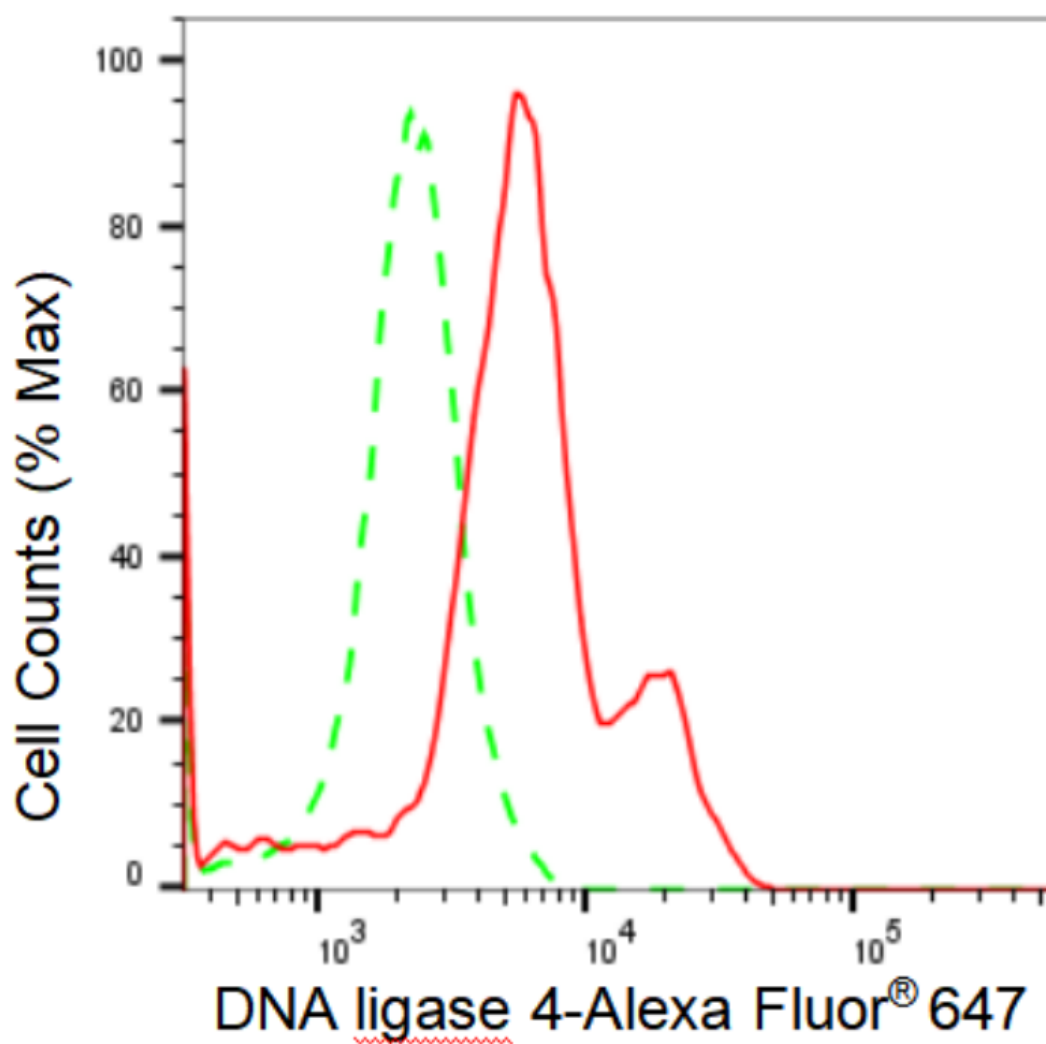
SALES@GENUINBIOTECH.COM  
FAX: +1-540-855-7041

[WWW.GENUINBIOTECH.COM](http://WWW.GENUINBIOTECH.COM)

# KD-Validated Anti-DNA ligase 4 Recombinant Rabbit Monoclonal Antibody

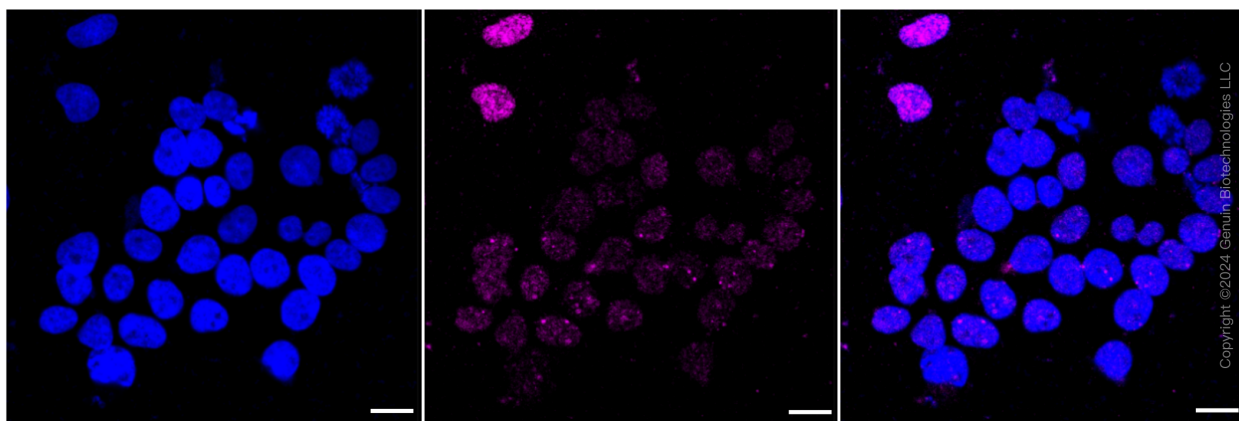
PAGE 2

## Validation Data



Copyright ©2024 Genuin Biotechnologies LLC

Flow cytometric analysis of DNA ligase 4 expression in HeLa cells using DNA ligase 4 antibody (Cat#61478, 1:2,000). Green, isotype control; red, DNA ligase 4.



Copyright ©2024 Genuin Biotechnologies LLC

### SUPPORT

SUPPORT@GENUINBIOTECH.COM  
TEL: +1-540-855-7041

### ORDERS

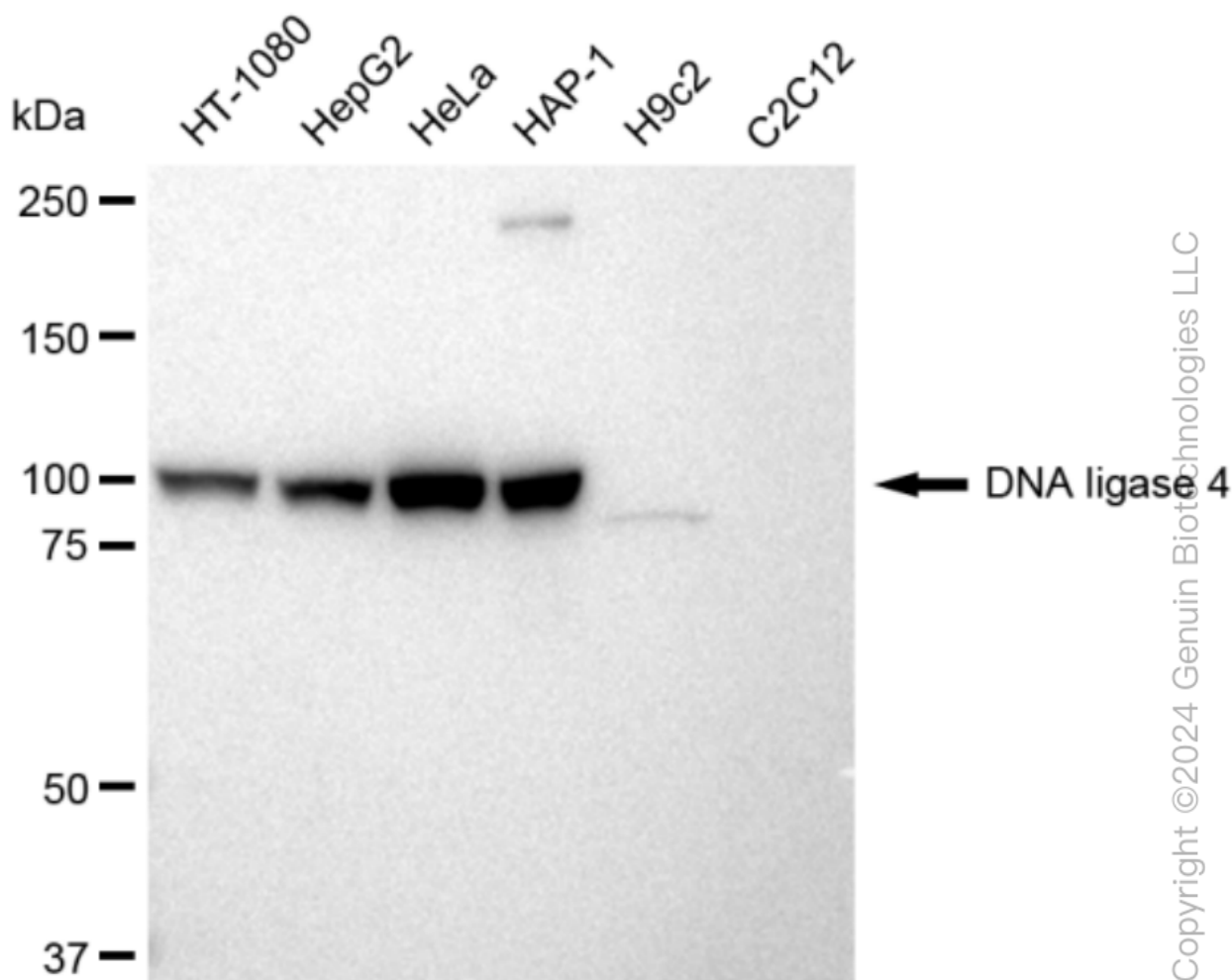
SALES@GENUINBIOTECH.COM  
FAX: +1-540-855-7041

WWW.GENUINBIOTECH.COM

## KD-Validated Anti-DNA ligase 4 Recombinant Rabbit Monoclonal Antibody

PAGE 3

Immunocytochemical staining of HeLa cells with DNA ligase 4 antibody (Cat#61478, 1:1,000). Nuclei were stained blue with DAPI; DNA ligase 4 was stained magenta with Alexa Fluor® 647. Images were taken using Leica stellaris 5. Protein abundance based on laser Intensity and smart gain: Low. Scale bar: 20  $\mu$ m.



Western blotting analysis using anti-DNA ligase 4 antibody (Cat#61478). Total cell lysates (30  $\mu$ g) from various cell lines were loaded and separated by SDS-PAGE. The blot was incubated with anti-DNA ligase 4 antibody (Cat#61478, 1:5,000) and HRP-conjugated goat anti-rabbit secondary antibody (Cat#201, 1:20,000) respectively. Image was developed using FeQ™ ECL Substrate Kit (Cat#226).

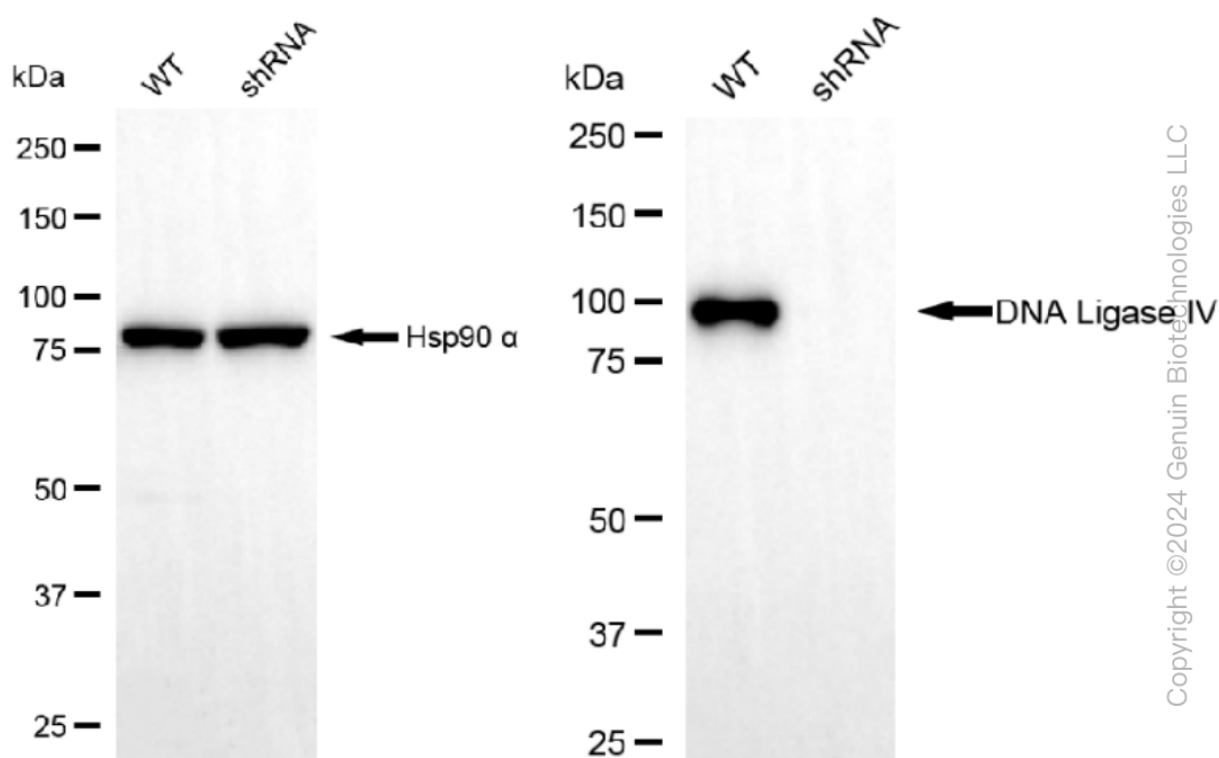
### SUPPORT

SUPPORT@GENUINBIOTECH.COM  
TEL: +1-540-855-7041

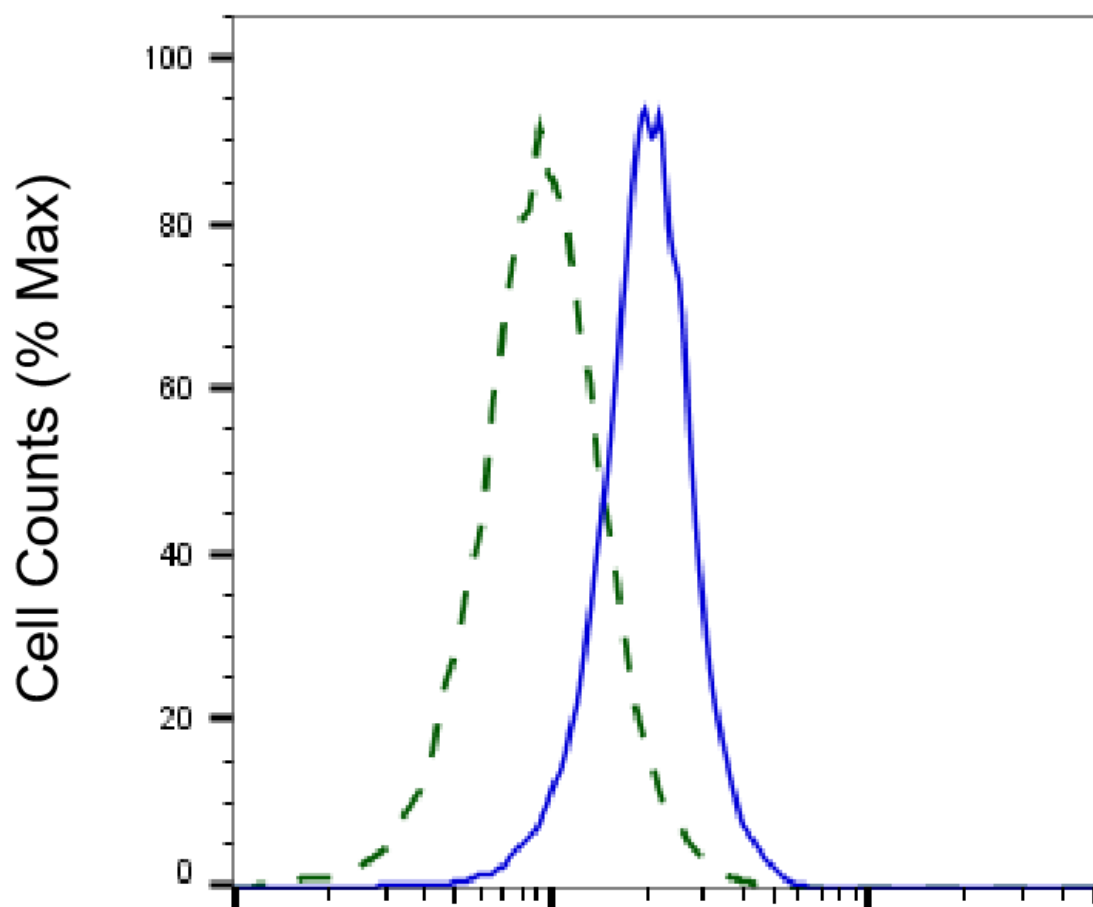
### ORDERS

SALES@GENUINBIOTECH.COM  
FAX: +1-540-855-7041

WWW.GENUINBIOTECH.COM



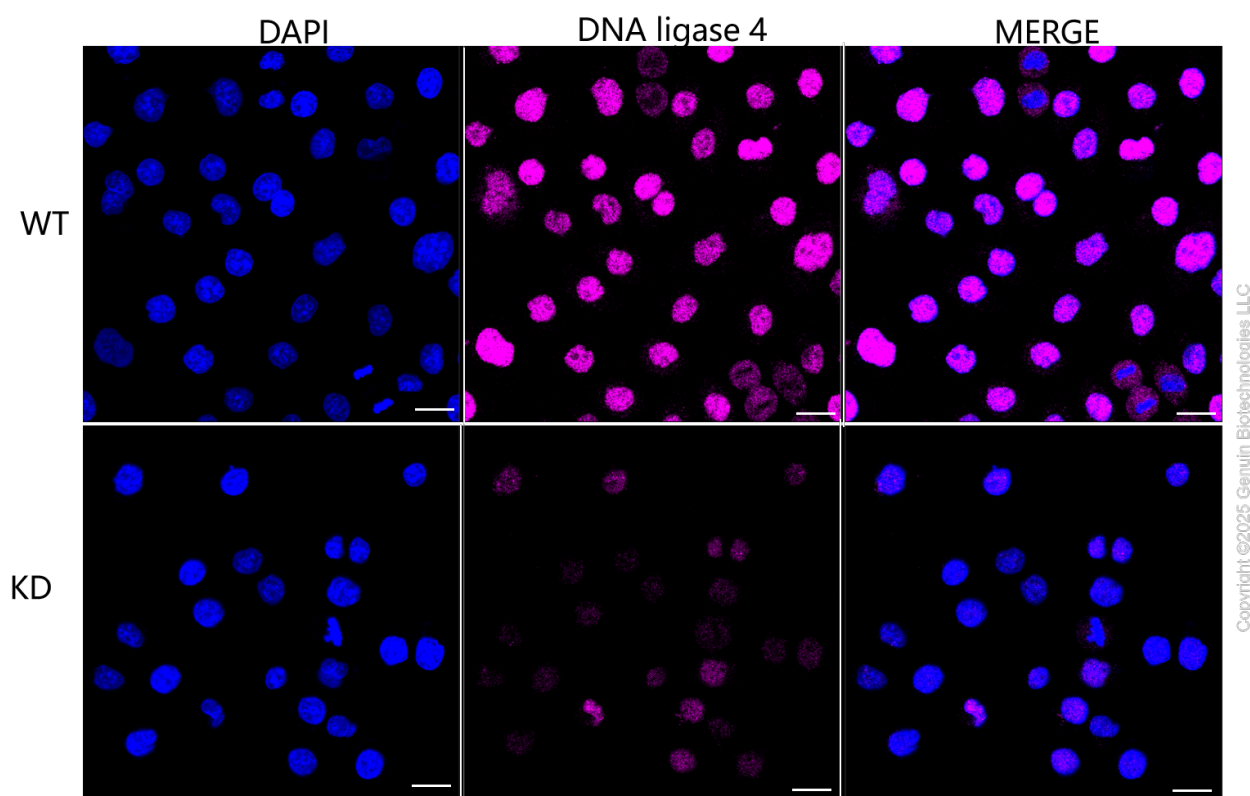
Western blotting analysis using anti-DNA ligase 4 antibody (Cat#61478). DNA ligase 4 expression in wild type (WT) and DNA ligase 4 shRNA knockdown (KD) HeLa cells with 30 µg of total cell lysates. β-Tubulin serves as a loading control. The blot was incubated with anti-DNA ligase 4 antibody (Cat#61478, 1:5,000) and HRP-conjugated goat anti-rabbit secondary antibody (Cat#201, 1:20,000) respectively. Image was developed using FeQ™ ECL Substrate Kit (Cat#226).



Copyright ©2025 Genuin Biotechnologies LLC

### DNA ligase 4-Alexa Fluor® 647

Validation of DNA ligase 4 knockdown using flow cytometry. Wild-type(WT, Blue) and knockdown(KD, Green) HeLa cells were stained with anti-DNA ligase 4 antibody (Cat#61478, 1:2,000) and analyzed using BD flow cytometer.



Immunocytochemical staining of HeLa cells using anti-DNA ligase 4 antibody (Cat#61478, 1:1,000), Top panel: wild-type (WT); Bottom panel: DNA ligase 4 shRNA knockdown (KD). Nuclei were stained blue with DAPI; DNA ligase 4 was stained magenta with Alexa Fluor® 647. Scale bar, 20  $\mu$ m. Permeabilization: Triton.